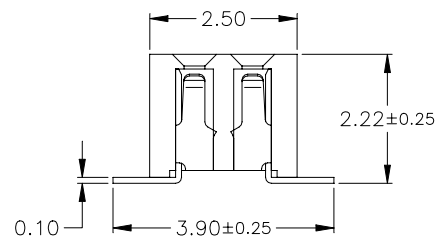
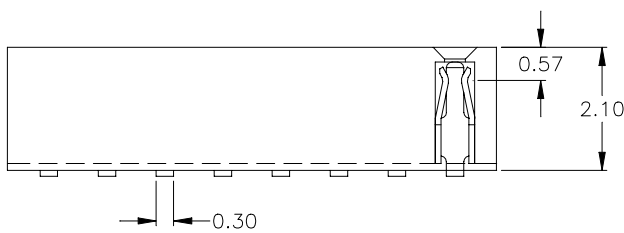
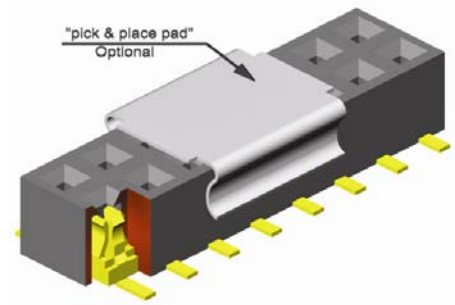
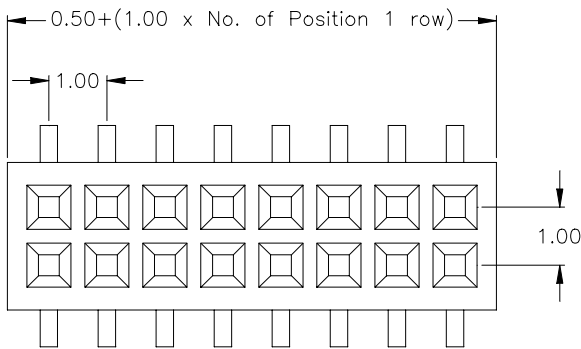


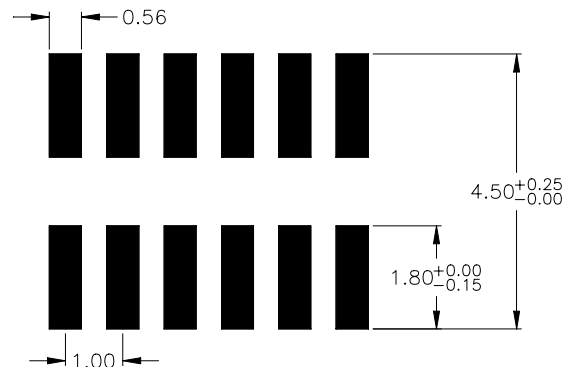
1.00mm pitch Female Header  
 - SMT - low profile dual row



**APPLICATION AND FEATURES**

- **Standard: tube packing and without "pick & place pad"**
- Assures reliable PC Board connections
- Fine pitch, low profile for space saving Application
- Accept 0,30mm square Pin Header on page 11

**P C B Surface Mount Layout**



**SPECIFICATIONS**

Current rating	1 A
Insulator resistance	5000 MΩ min.
Contact resistance	20 mΩ max.
Dielectric withstanding	AC 500 V

Operating temperature	- 40°C to +105°C
Processing temperature	+250°C +0/-5°C for 20~40sec.
Contact material	(RoHS compliant) Phosphor Bronze
Insulator material	(RoHS compliant) LCP UL 94 V-0

**How to order**

BS2 - xxx - H222 - 55 /00 X

Nbr of contacts
004 to 080

Plating
55 = gold
other platings on request

Packing and "pick & place pad" Option
A = tube packing and pick & place pad
B = reel packing and pick & place pad