

# Plug-Board Connector - SMT -

0.50mm - 0.60mm - 0.80mm Pitch

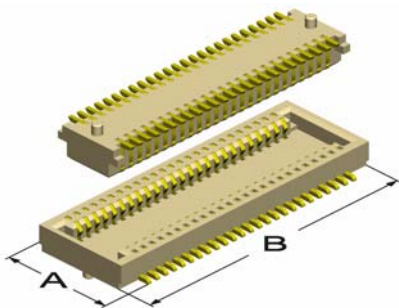


- Fine pitch, super low profile, from 1.50mm to 9.50mm between the boards
- The stamped, solid contacts assure reliable PC Board connections
- Tube or Reel packing available
- Also available with "locating pegs" for easy positioning of the connector during placement
- Some types can also be offered with metal solder tabs, which provide additional mechanical strength to avoid damages to the solder joints during disconnection of the male & female connectors.

**Please inform us of your application and precise requirements, so that our product engineers may offer you a suitable solution.**

Please indicate your dimensional requirements for the  
☐ 0.50mm ☐ 0.60mm ☐ 0.80mm pitch  
 „Plug-Board“ connector.  
 Solutions **without** metal solder tabs,  
 but with & without locating pegs.

Number of contacts in total .....

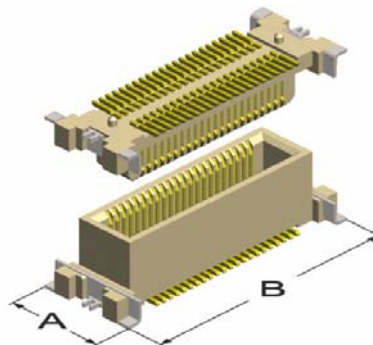


Dimension „A“ (max.): .....

Dimension „B“ (max.): .....

Please indicate your dimensional requirements for the  
☐ 0.50mm ☐ 0.60mm ☐ 0.80mm pitch  
 „Plug-Board“ connector.  
 Solutions **with** metal solder tabs,  
 but with & without locating pegs.

Number of contacts in total .....

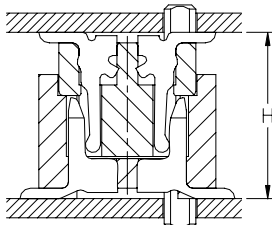
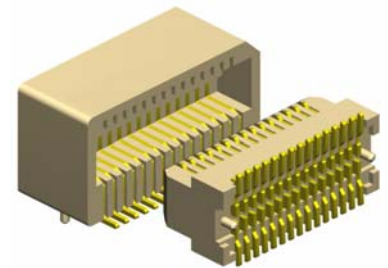


Dimension „A“ (max.): .....

Dimension „B“ (max.): .....

Please indicate your dimensional requirements for the  
☐ 0.50mm ☐ 0.60mm ☐ 0.80mm pitch  
 right angle type „Plug-Board“ connector.  
 Solutions **without** metal solder tabs,  
 but with & without locating pegs.

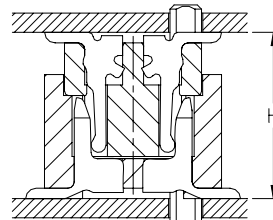
Number of contacts in total .....



Your board-to-board requirement

Dimension „H“: .....

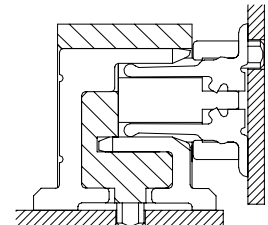
Do you wish to receive this connector  
 with ☐ or without ☐ locating peg?



Your board-to-board requirement

Dimension „H“: .....

Do you wish to receive this connector  
 with ☐ or without ☐ locating peg?



Do you wish to receive this connector  
 with ☐ or without ☐ locating peg?

**In addition, please also provide the following information:**

**For which application do you intend to use our fine pitch „Plug Board“ connector?**

**Please indicate your quantity requirement for „prototypes“ .....** and **„production“ .....**

**Please also indicate the expected „life time“ of your project .....**

**Your Company Name & Address:** .....

**Your Name, Phone, FAX & e-mail** .....

**Please FAX this page to the nearest E-tec sales office and we will get back to you as soon as possible  
 with a solution adapted to your needs.**

## Specifications for E-tec fine pitch Plug Board Connectors

|                      |                        |                        |  |
|----------------------|------------------------|------------------------|--|
| Current rating       | 0,3 A                  | Operating temperature  | - 45° to +125°C                                    |
| Insulator resistance | 500 MΩ min. at 100V DC | Processing temperature | +230°C for 60 sec. max.<br>+260°C for 10 sec. max. |
| Contact resistance   | 50 mΩ max. at 100mA    | Contact material       | Phosphor Bronze                                    |
| Withstanding voltage | 150 V AC 1 minute      | Insulator material     | Nylon UL 94 V-0                                    |