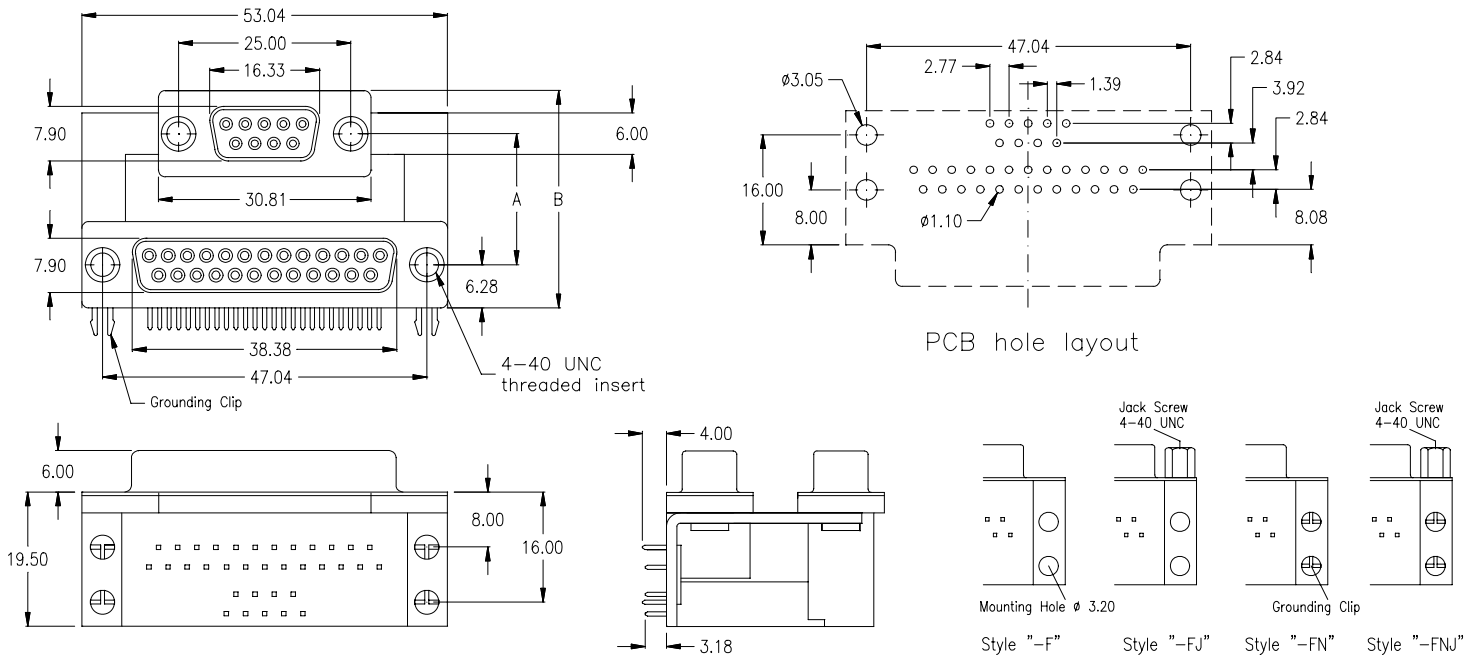
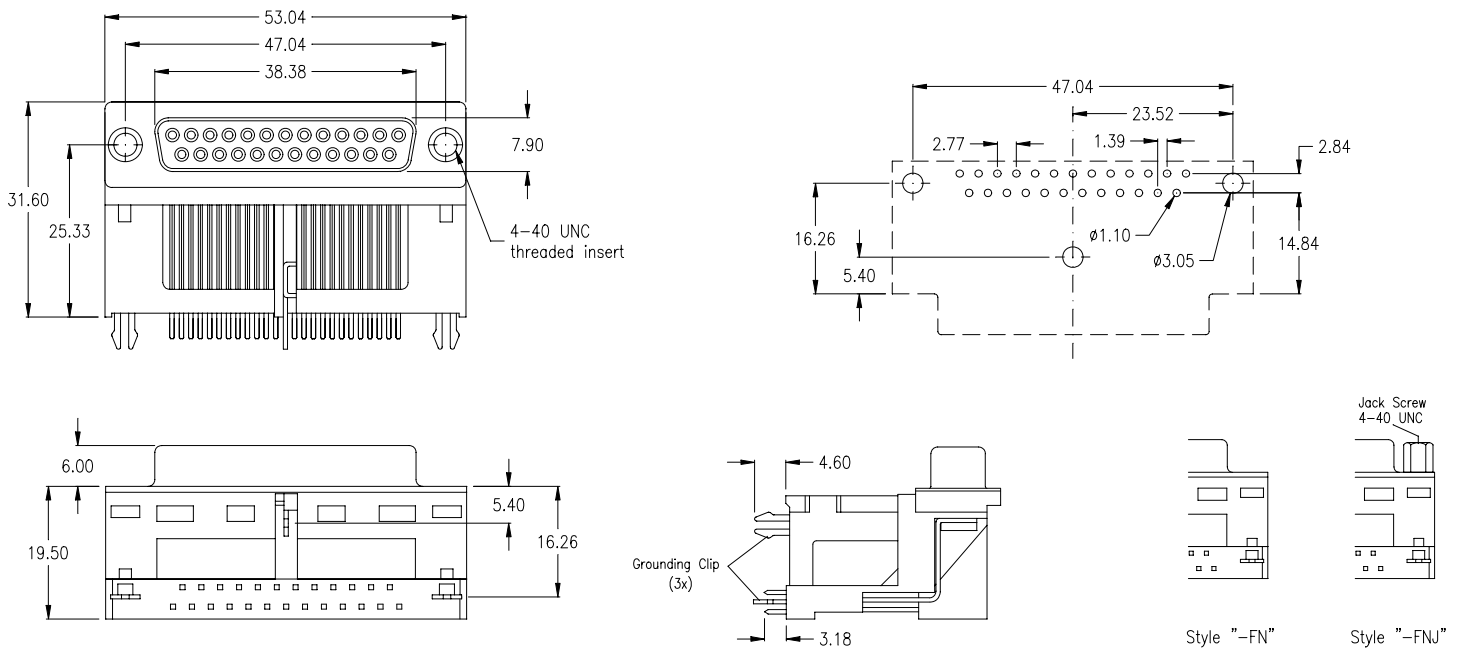


9-pin female / 25-pin female



without grounding clips just 4 mounting holes	without grounding clips, just 4 mounting holes; 4 jack screws 4-40 UNC mounted	with 4 grounding clips (as above drawing)	with 4 grounding clips; 4 jack screws 4-40 UNC mounted	Distance Dimensions
SDD-0925-1-95-F	SDD-0925-1-95-FJ	SDD-0925-1-95-FN	SDD-0925-1-95-FNJ	„A“ = 22.86 „B“ = 35.41
SDD-0925-2-95-F	SDD-0925-2-95-FJ	SDD-0925-2-95-FN	SDD-0925-2-95-FNJ	„A“ = 19.05 „B“ = 31.60
SDD-0925-3-95-F	SDD-0925-3-95-FJ	SDD-0925-3-95-FN	SDD-0925-3-95-FNJ	„A“ = 15.87 „B“ = 28.42

25-pin female raised



	with 3 grounding clips; w/o jack screws <i>Standard</i> (as above drawing)	3 grounding clips; 2 jack screws 4-40 UNC mounted <i>Option</i>	
	SDD-2500-2-95-FN	SDD-2500-2-95-FNJ	