



Emulation Technology, Inc.

ET-BL-RS232 Converter Module

Information for Integrators

Version: 1.0



Table of Contents

1. Introduction	3
2. Physical Dimensions	3
3. Connector Specifications	4
3.1. Connector Type	4
3.2. Connector Pin Outs	4
4. Power requirements	4
5. Reset Button	4
6. Bluetooth Qualification Implications	4
7. External SMA/Antennae Connection	5
8. Mounting Points	6

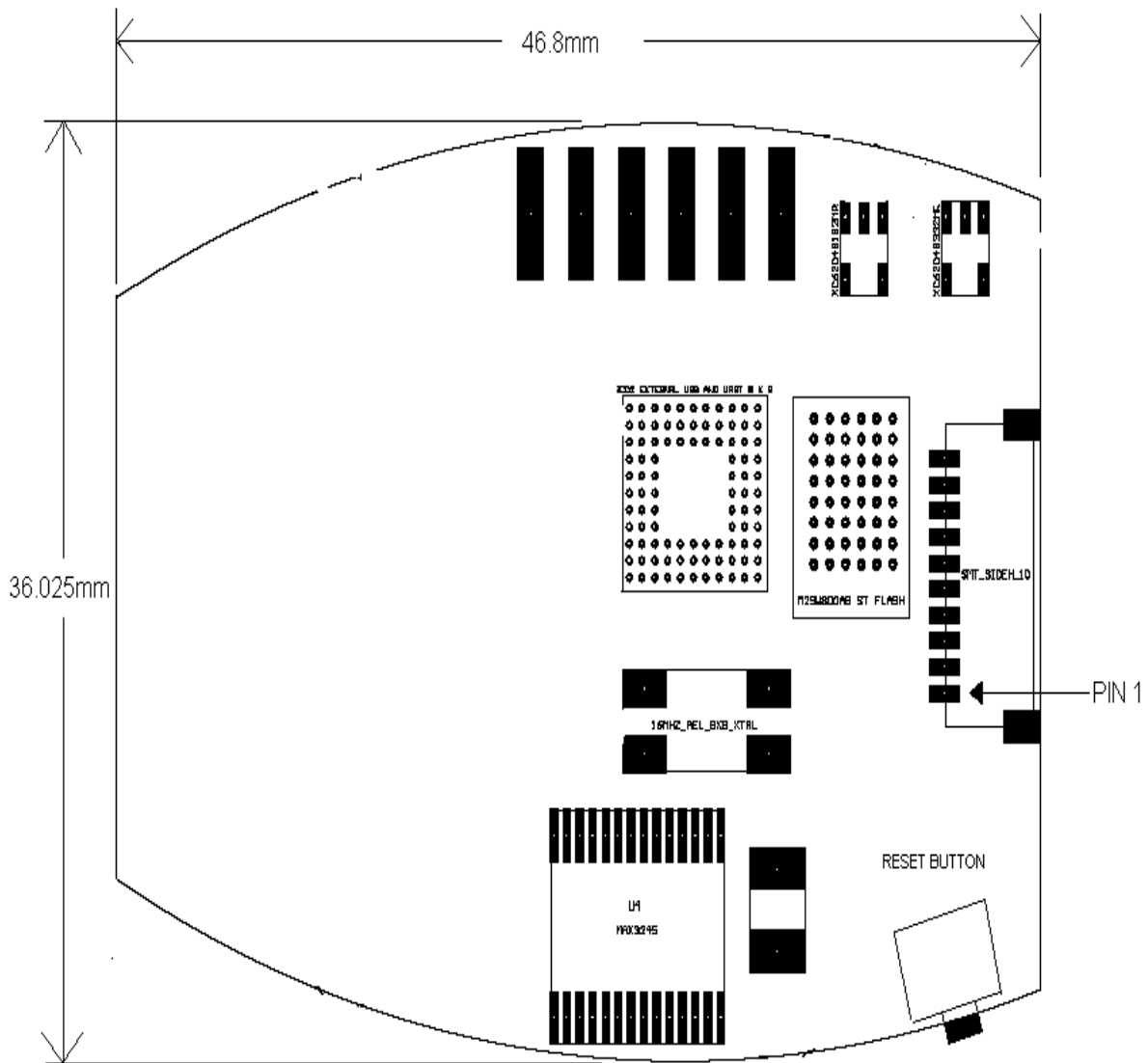
1. Introduction

ET-BL-730 is an RS232 (EIA232C) Bluetooth converter. It plugs onto any standard 9 pin RS232C serial port and allows the data to be sent across a Bluetooth connection to another Bluetooth enabled device that supports the serial port profile. ET-BL-730 does not require any of the devices to which it connects to be aware that it is connected via Bluetooth.

ET-BL-730 can also be supplied as a module (PCB only) for embedding into customer products. This document serves to deliver important information required by such system developers.

The information contained within this document is believed to be accurate for the revision of the product supplied at the time the document was written. Emulation Technology reserves the right to alter these specifications at any time, and particularly when creating any new revisions of the products.

2. Physical Dimensions



3. Connector Specifications

3.1. Connector Type

JST 10 WAY HOUSING – Manufacturer's Part No. SHR-10V-S-B.

3.2. Connector Pin Outs

(Note. To locate Pin 1, Use the overview diagram on the previous page).

PIN 1 – TXD (Transmitted Data) – Output from ET-BL-730

PIN 2 – RXD (Received Data) – Input to ET-BL-730

PIN 3 – VSS (Ground)

PIN 4 – CTS (Clear to Send) – Input to ET-BL-730

PIN 5 – RTS (Request to Send) – Output to ET-BL-730

PIN 6 – VEXT (Power Supply – 5V @ 200mA)

PIN 7 – PIN 10 – Used Internally – NOT FOR USE. Leave unconnected.

4. Power requirements

The ET-BL-730 Module requires a power input of 200 mA @ 5V, on pin 6 (VEXT) of the connector specified in section 3.

5. Reset Button

The diagram in section 2 shows a reset button, which can be used for either reset of a pairing or reset to a default configuration.

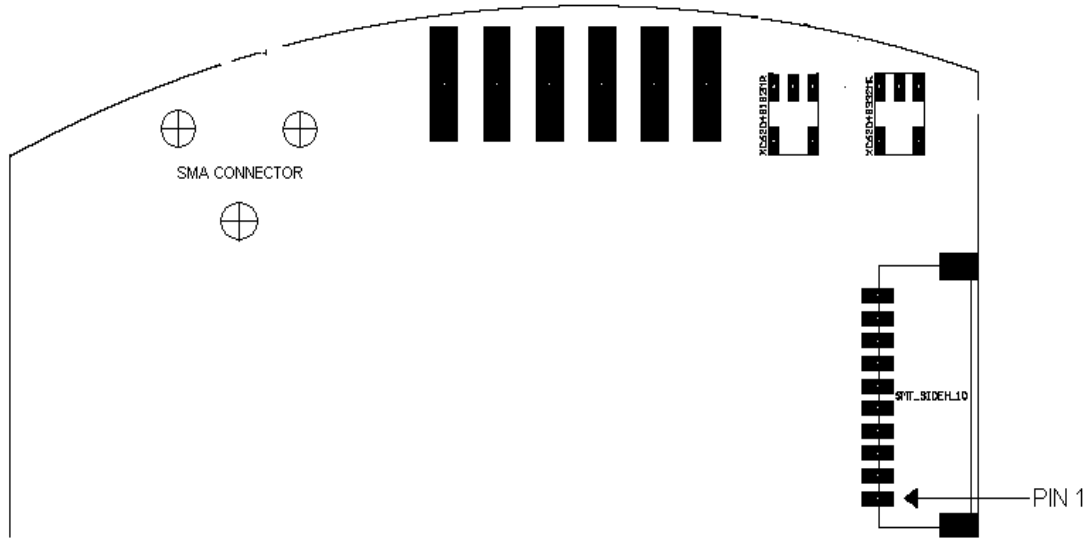
6. Bluetooth Qualification Implications

ET-BL-730 is (or will be) a fully qualified Bluetooth product when supplied as a module. However, if you are embedding the ET-BL-730 module into your own product, which you wish to sell as a Bluetooth product, you may be required to separately Bluetooth qualify your product. Brain Boxes may be able to assist you with this process – Please contact your sales representative for more details.

7. External SMA/Antennae Connection

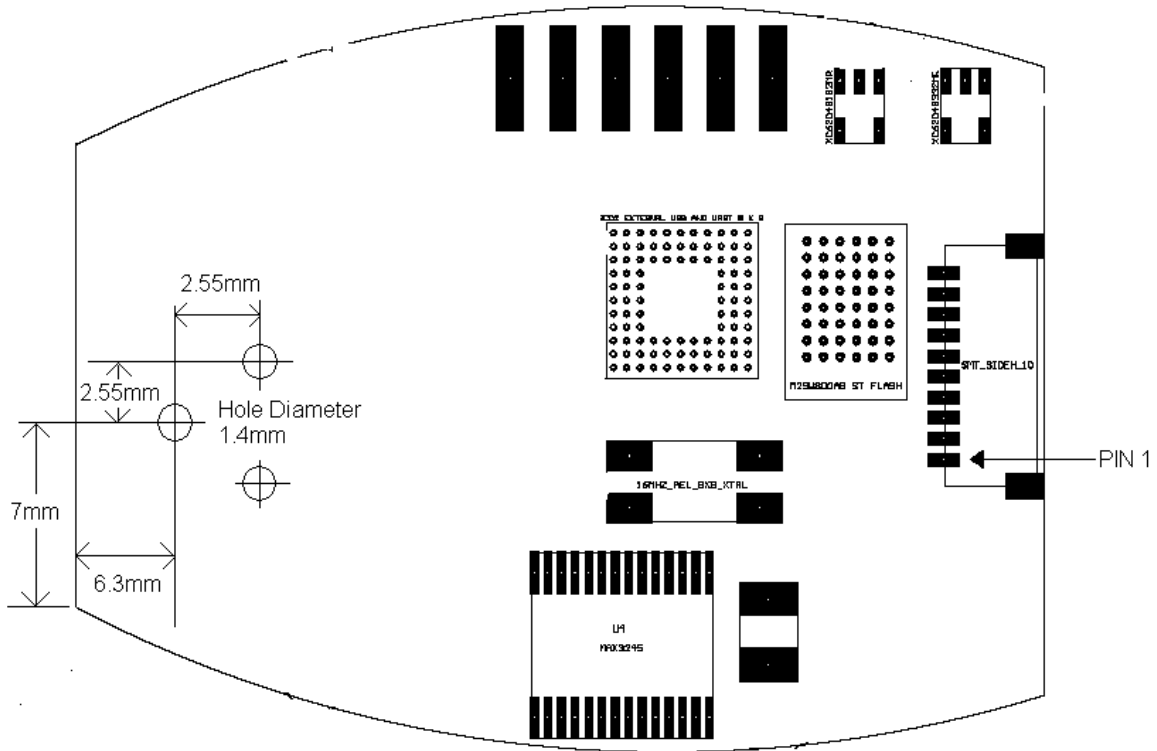
There is facility for an external SMA connection, which can be used for providing an external antenna.

This should only be mounted on the reverse (Non-component side) of the PCB.



8. Mounting Points

There is currently only 1 location for mounting the ET-BL-730 PCB. These are identified below.



Version History

Version	Date	Author	Checked By	Comments
1.0	20/01/2003	Dave R		Rev 7 draft