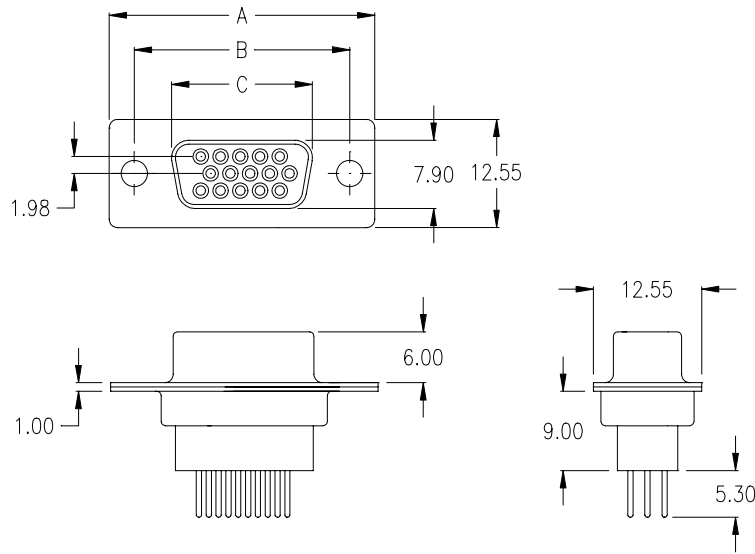


female



Ordering Code

SHF - xxx - B111 - 95 / XXX

No. of contacts

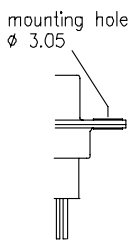
Option

Plating: -95 = tin (leadfree)/gold

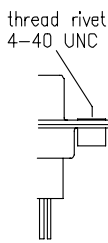
General Specification page 72

No. of contacts	Dimension		
	A	B	C
015	30.81	24.99	16.33
	1.213	.984	.643
026	39.14	33.32	24.66
	1.541	1.312	.971
044	53.04	47.04	38.38
	2.088	1.852	1.511
062	69.32	63.50	54.84
	2.729	2.500	2.159

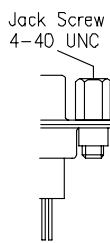
Options



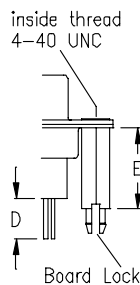
T0



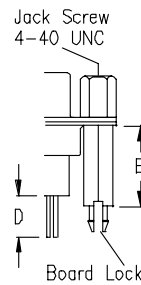
T



TJ



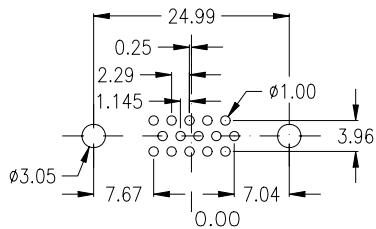
BR



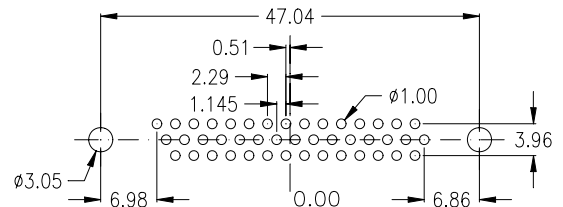
BRJ

D	E	Option
3,80	9,60	1
5,30	11,00	2
7,20	12,70	3
7,40	13,50	5

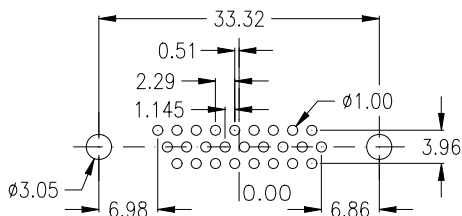
PCB Layout „female“



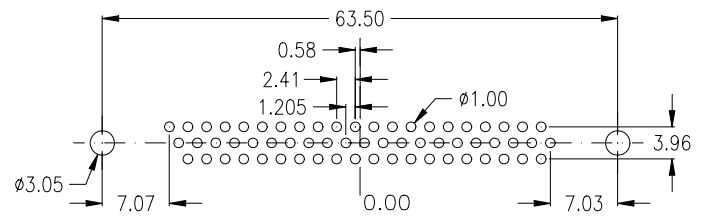
15 pin



44 pin



26 pin



62 pin