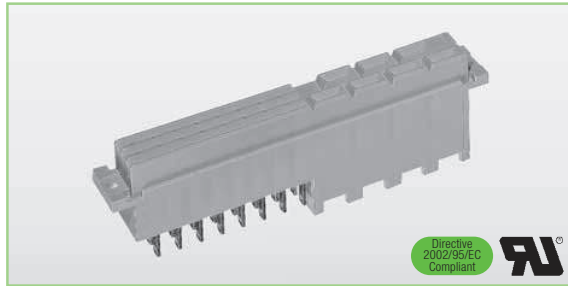


DIN 41612

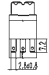
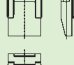
2E Syscom Inc. - 86 Kendall Avenue - Framingham, MA 01720
 Tel. 508 620 1678 - www.2esyscom.com - e mail 2e@2esyscom.com

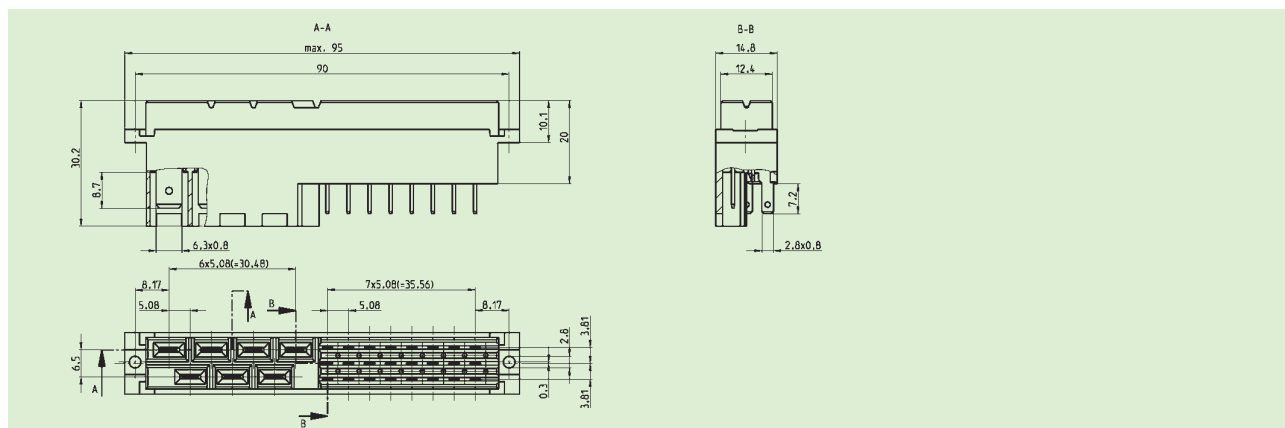
IEC 60603-2

F24H7



- Bauform F24H7 in Ergänzung an die DIN 41612
Type F24H7 in addition to DIN 41612
- Mit integrierter Kodierung
With integrated coding device
- Vergoldete Kontaktzone im F-Teil
Gold-plated mating area part F

Polzahl/no of contacts		16 + 7 (z + d)	24 + 7 (z + b + d)	
F-Teil/H-Teil/part F/part H	Gütek./mating class			Zubehör/Accessories
Faston/Faston 6,3 x 0,8 mm <i>faston/faston 6.3 x 0.8 mm</i>	 F: 2 (Au/Sn) H: Ag	06 Mf16z+dfa2,8+7fa2 Order-No. 062032	06 Mf24fa2,8+7fa2 Order-No. 62022	
Kodierkeile (grün) <i>coding key (green)</i>				06 F24H7-cod Order-No. 0401115600C99



Technische Daten Seite 16 und 17.
 Technical specifications page 16 and 17.

