

2J

antenna conceptor

European manufacturer
your partner for antennae solutions

- development and production in Slovakia/UK
- 3D/EM modeling
- rapid prototyping
- customized solutions
- anechoic chamber
- RF cable assemblies



Sample prototyping



Injection molds



Plastic injection



PCB assembly



Cable assembly



Antenna production



Packaging



**DEVELOPMENT
AND TESTING**

5 - 22 pages WIRELESS ANTENNAS

ISM (868 MHz, 915 MHz)
AMPS (824 - 894 MHz)
GSM (900 MHz)
DCS (1800 MHz)
PCS (1900 MHz)
3G (2100 MHz)
4G/LTE (791 - 862 MHz, 2500 - 2690 MHz)
WIFI/BLUETOOTH (2.4 - 5.9 GHz)



**ANECHOIC BOX/
SMALL CHAMBER**

23 - 27 pages TETRA ANTENNAS

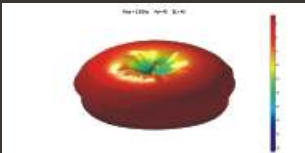
TETRA (380 - 500 MHz)
ISM (433 MHz)

28 - 32 pages GPS/GLONASS ANTENNAS

GPS (1575.42 MHz)
GLONASS (1592 - 1610)

33 - 46 pages COMBINED ANTENNAS

GPS + GSM
GPS+ WIFI
GSM + WIFI
GPS + TETRA
GSM + TETRA
GPS + GSM + TETRA
GPS + GSM + WIFI
GPS + WIFI + TETRA



**FULL SPHERICAL
RF MEASUREMENT**

47 - 51 pages OTHER ANTENNAS

AM/FM (530 - 40 MHz / 87.5 - 108 MHz)
DVBT/DAB (440 - 870 MHz / 150 - 240 MHz)
ERMES (169 MHz)
MARINE antennas
YAGI antennas

52 - 66 pages EMBEDDED ANTENNAS

GSM antennas
GPS antennas
SMT/CERAMIC
COMBINED ANTENNAS

67 - 69 pages CONNECTORS AND CABLE LEADS

WIRELESS ANTENNAS

ISM (868 MHz, 915 MHz)
AMPS (824 - 894 MHz)
GSM (900 MHz)
DCS (1800 MHz)
PCS (1900 MHz)
3G (2100 MHz)
4G/LTE (791 - 862 MHz, 2500 - 2690 MHz)
WIFI/BLUETOOTH (2.4 - 5.9 GHz)

Patch antennas: page 6 - 11
Magnetic antennas: page 12 - 13
Telematic and Body mount antennas: page 14 - 20
Wall mount antennas: page 21 - 22

Glossary

M - magnetic, P - patch, MP - magnetic and patch, B - body mount, R - Resistor, W - white

2J

antenna conceptor



2J500



specification

mounting	ON GLASS
frequency	AMPS 824-894 MHz, ISM 868 MHz, GSM 900 DCS 1800 MHz / PCS1.9 GHz, UMTS 2.1 GHz / BLUETOOTH 2.4 GHz
vswr	<2:1
impedance	50 Ohms
polarization	LINEAR
gain (dBi)	0 dBi
power handling	25W
cable	RG174
cable length	upon request
connector	upon request
housing size	22 mm x 116.5 mm x 5-7 mm
operating temp.	-40°C to +85°C

2J500L



specification

mounting	ON GLASS
frequency	TETRA 380-500 MHz / AMPS 824-894 MHz ISM 868 MHz, GSM 900, DCS 1800 MHz / PCS 1.9 GHz, UMTS 2.1 GHz / BLUETOOTH 2.4 GHz
vswr	<2:1
impedance	50 Ohms
polarization	LINEAR
gain (dBi)	2.2dBi
power handling	25 W
cable	RG174
cable length	upon request
connector	upon request
housing size	22 mm x 126.5 mm x 5 - 7 mm
operating temp.	-40°C to +85°C

2J510



specification

mounting	ON GLASS
frequency	AMPS 824-894 MHz / GSM 900, DCS 1800 MHz / PCS 1.9 GHz/ UMTS 2.1 GHz / BLUETOOTH 2.4 GHz
vswr	<2:1
impedance	50 Ohms
polarization	LINEAR
gain (dBi)	2.14 dBi
power handling	25 W
cable	RG174
cable length	upon request
connector	upon request
housing size	11-15 mm x 123 mm x 5 mm
operating temp.	-40°C to +85°C

wireless antennas : patch

mounting	ON GLASS
frequency	AMPS 824-894 MHz, ISM 868 MHz, GSM 900, DCS 1800 MHz, PCS 1.9 GHz, UMTS 2.1GHz / BLUETOOTH 2.4GHz
vswr	<2:1
impedance	50 Ohms
polarization	LINEAR
gain (dBi)	2.14 dBi
power handling	25W
cable	RG174
cable length	upon request
connector	upon request
housing size	11-15 mm x 123 mm x 5 mm
operating temp.	-40 °C to +85 °C

specification



2J510F Flexible

mounting	ON GLASS
frequency	AMPS 824-894 MHz, ISM 868 MHz, GSM 900, DCS 1800 MHz, PCS 1.9 GHz, UMTS 2.1GHz / BLUETOOTH 2.4GHz
vswr	<2:1
impedance	50 Ohms
polarization	LINEAR
gain (dBi)	2.14 dBi
power handling	25 W
cable	RG174
cable length	upon request
connector	upon request
housing size	11-15 mm x 123 mm x 5 mm
operating temp.	-40°C to +85°C

specification



2J510FW Flexible

mounting	ON GLASS
frequency	AMPS 824-894 MHz, ISM 868 MHz, GSM 900, DCS 1800 MHz / PCS 1.9 GHz, UMTS 2.1 GHz / BLUETOOTH 2.4 GHz / LTE 790-860, 2500-2690 MHz
vswr	<2:1
impedance	50 Ohms
polarization	HORIZONTAL
gain (dBi)	2.14 dBi
power handling	25 W
cable	RG174
cable length	upon request
connector	upon request
housing size	6.7 mm x 119 mm x 14.8 mm
operating temp.	-40 °C to +85 °C

specification



2J520 Flexible

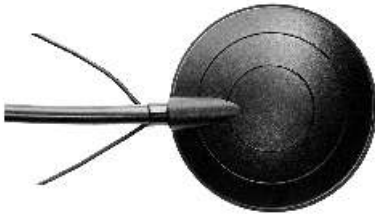
2J520FW Flexible



specification

mounting	ON GLASS
frequency	AMPS 824-894 MHz, ISM 868 MHz, GSM 900 DCS 1800 MHz / PCS1.9 GHz, UMTS 2.1 GHz / BLUETOOTH 2.4 GHz / LTE 790-860, 2500-2690 MHz
vswr	<2:1
impedance	50 Ohms
polarization	HORIZONTAL
gain (dBi)	2,14 dBi
power handling	25W
cable	RG174
cable length	upon request
connector	upon request
housing size	6.7 mm x 119 mm x 14.8 mm
operating temp.	-40°C to +85°C

2J530



specification

mounting	ON GLASS
frequency	TETRA/ISM 433 MHz / AMPS 824-894 MHz GSM 900, DCS 1800 MHz / PCS 1.9 GHz, UMTS 2.1 GHz / BLUETOOTH 2.4 GHz
vswr	<2:1
impedance	50 Ohms
polarization	HORIZONTAL
gain (dBi)	0 dBi
power handling	60 W
cable	RG58
cable length	upon request
connector	upon request
housing size	52 mm x 13 mm
operating temp.	-40°C to +85°C

2J540



specification

mounting	ON GLASS
frequency	AMPS 824-894 MHz, ISM 868 MHz, GSM 900 DCS 1800 MHz / PCS 1.9 GHz, UMTS 2.1 GHz / BLUETOOTH 2.4 GHz / LTE 790-860, 2500-2690 MHz
vswr	<2:1
impedance	50 Ohms
polarization	LINEAR
gain (dBi)	2.14 dBi
power handling	35 W
cable	RG174
cable length	upon request
connector	upon request
housing size	11.3 mm x 112.5 mm x 60 mm
operating temp.	-40°C to +85°C

wireless antennas : patch

mounting	ON GLASS
frequency	AMPS 824-894 MHz, ISM 868 MHz, GSM 900 DCS 1800 MHz / PCS1.9 GHz, UMTS 2.1 GHz / BLUETOOTH 2.4 GHz
vswr	<2:1
impedance	50 Ohms
polarization	VERTICAL
gain (dBi)	2.14 dBi
power handling	35 W
cable	RG174
cable length	upon request
connector	upon request
housing size	8 mm x 110 mm x 70 mm
operating temp.	-40°C to +85°C

specification



2J542

mounting	ON GLASS
frequency	AMPS 824-894 MHz, ISM 868 MHz, GSM 900 DCS 1800 MHz / PCS1.9 GHz, UMTS 2.1 GHz / BLUETOOTH 2.4 GHz
vswr	<2:1
impedance	50 Ohms
polarization	VERTICAL
gain (dBi)	2.14 dBi
power handling	35 W
cable	RG174
cable length	upon request
connector	upon request
housing size	8 mm x 110 mm x 70 mm
operating temp.	-40°C to +85°C

specification



2J542F Flexible

mounting	ON GLASS
frequency	AMPS 824-894 MHz, ISM 868 MHz, GSM 900, DCS 1800 MHz / PCS 1.9GHz / UMTS 2.1 GHz / BLUETOOTH 2.4 GHz
vswr	<2:1
impedance	50 Ohms
polarization	VERTICAL
gain (dBi)	0 dBi
power handling	25W
cable	RG174
cable length	upon request
connector	upon request
housing size	72 mm x 25.5 mm x 7 mm
operating temp.	-40°C to +85°C

specification



2J550

2J550F Flexible



specification

mounting	ON GLASS
frequency	AMPS 824-894 MHz, ISM 868 MHz, GSM 900 DCS 1800 MHz / PCS1.9 GHz, UMTS 2.1 GHz / BLUETOOTH 2.4 GHz
vswr	<2:1
impedance	50 Ohms
polarization	VERTICAL
gain (dBi)	0 dBi
power handling	25W
cable	RG174
cable length	upon request
connector	upon request
housing size	72 mm x 25.5 mm x 7 mm
operating temp.	-40°C to +85°C

2J800



specification

mounting	ON GLASS
frequency	AMPS 824-894 MHz, ISM 868 MHz, GSM 900 DCS 1800 MHz / PCS1.9 GHz, UMTS 2.1 GHz / BLUETOOTH 2.4 GHz
vswr	<2:1
impedance	50 Ohms
polarization	LINEAR
gain (dBi)	0 dBi
power handling	25 W
cable	RG174
cable length	upon request
connector	upon request
housing size	38mm x 70mm x 5mm & 38mm x 70mm x 12mm
operating temp.	-40°C to +85°C

2J501



specification

mounting	ON GLASS
frequency	AMPS 824-894 MHz, ISM 868 MHz, GSM 900 DCS 1800 MHz / PCS 1.9 GHz, UMTS 2.1 GHz BLUETOOTH 2.4 GHz
vswr	<2:1
impedance	50 Ohms
polarization	VERTICAL
gain (dBi)	0 dBi
power handling	25 W
cable	RG174
cable length	upon request
connector	upon request
housing size	113 mm x 21 mm x 2.4 mm
operating temp.	-40°C to +85°C

wireless antennas : patch

mounting	ON GLASS
frequency	TETRA/ISM 433 MHz, AMPS 824-894 MHz, ISM 868 MHz, GSM 900, DCS 1800 MHz / PSC 1.9 GHz, UMTS 2.1 GHz / BLUETOOTH 2.4GHz
vswr	<2:1
impedance	50 Ohms
polarization	LINEAR
gain (dBi)	2.2 dBi
power handling	25W
cable	RG174
cable length	upon request
connector	upon request
housing size	116.5 mm x 5-7 mm x 22 mm
note	10k detection resistor on antennae
operating temp.	-40 °C to +85 °C

specification



2J500LR Diagnostic antennae

mounting	ON GLASS
frequency	AMPS 824-894 MHz, ISM 868 MHz, GSM 900, DCS 1800 MHz / PSC 1.9 GHz, UMTS 2.1 GHz/BLUETOOTH 2.4GHz LTE 790-860, 2500-2690MHz
vswr	<2:1
impedance	50 Ohms
polarization	HORIZONTAL
gain (dBi)	2.14 dBi
power handling	25W
cable	RG174
cable length	upon request
connector	upon request
housing size	119 mm x 14.8 mm x 6.7 mm
note	9k 1 to 10k resistor on antennae
operating temp.	-40 °C to +85 °C

specification



2J520LR Diagnostic antennae

mounting	ON GLASS
frequency	AMPS 824-894 MHz, ISM 868 MHz, GSM 900, DCS 1800 MHz / PSC 1.9 GHz, UMTS 2.1 GHz/WIFI / BLUETOOTH 2.4 GHz, 5.0 GHz, 5.9 GHz
vswr	<2:1
impedance	50 Ohms
polarization	VERTICAL
gain (dBi)	2.2 dBi
power handling	25W
cable	RG174
cable length	upon request
connector	upon request
housing size	116 mm x 22 mm x 6.7 mm
note	10k resistor on antennae
operating temp.	-40 °C to +85 °C

specification



2J550LR Diagnostic antennae

2J300M



specification

mounting	ANY METALIC SURFACE
frequency	AMPS 824-894 MHz, ISM 868 MHz, GSM 900 DCS 1800 MHz / PCS1.9 GHz, UMTS 2.1 GHz / BLUETOOTH 2.4 GHz
vswr	<2:1
impedance	50 Ohms
polarization	VERTICAL
gain (dBi)	2.2. dBi max
power handling	35W
cable	RG174
cable length	upon request
connector	upon request
housing size	71.85 mm x 31 mm
operating temp.	-40°C to +85°C

2J301M



specification

mounting	ANY METALIC SURFACE
frequency	AMPS 824-894 MHz, ISM 868 MHz, GSM 900 DCS 1800 MHz / PCS1.9 GHz, UMTS 2.1 GHz / BLUETOOTH 2.4 GHz
vswr	<2:1
impedance	50 Ohms
polarization	VERTICAL
gain (dBi)	2.2 dBi Max
power handling	25 W
cable	RG174
cable length	upon request
connector	upon request
housing size	71.95 mm x 30.85 mm
operating temp.	-40°C to +85°C

2J302M



specification

mounting	ANY METALIC SURFACE
frequency	AMPS 824-894 MHz, ISM 868 MHz, GSM 900 DCS 1800 MHz / PCS 1.9 GHz, UMTS 2.1 GHz BLUETOOTH 2.4 GHz
vswr	<2:1
impedance	50 Ohms
polarization	VERTICAL
gain (dBi)	2.2 dBi Max
power handling	25 W
cable	RG174
cable length	upon request
connector	upon request
housing size	90.45 mm x 31 mm
operating temp.	-40°C to +85°C

wireless antennas : magnetic

mounting	ANY METALIC SURFACE
frequency	AMPS 824-894 MHz, ISM 868 MHz, GSM 900, DCS 1800 MHz / PSC 1.9 GHz, UMTS 2.1 GHz / BLUETOOTH 2.4 GHz
vswr	<2:1
impedance	50 Ohms
polarization	VERTICAL
gain (dBi)	5 dBi at 2.4 GHz
power handling	30W
cable	RG174
cable length	upon request
connector	upon request
housing size	233 mm x 31 mm
operating temp.	-40 °C to +85 °C

specification



2J310M

mounting	ANY METALIC SURFACE
frequency	GSM 900, DCS 1800 MHz / PSC 1.9 GHz, UMTS 2.1 GHz BLUETOOTH 2.4 GHz
vswr	<2:1
impedance	50 Ohms
polarization	VERTICAL
gain (dBi)	5 dBi
power handling	25W
cable	RG174
cable length	upon request
connector	upon request
housing size	308 mm x 31.05 mm
operating temp.	-40 °C to +85 °C

specification



2J320M

mounting	ANY METALIC SURFACE
frequency	AMPS 824-894 MHz, GSM 900, DCS 1800 MHz / PSC 1.9 GHz, UMTS 2.1 GHz / BLUETOOTH 2.4 GHz
vswr	<2:1
impedance	50 Ohms
polarization	HORIZONTAL
gain (dBi)	2.14 dBi
power handling	25W
cable	RG174
cable length	upon request
connector	upon request
housing size	80 mm x 75 mm x 15.5 mm
operating temp.	-40 °C to +85 °C

specification



2J610M

2J1004



specification

mounting	TELEMATIC
frequency	AMPS 824-894 Mhz, GSM 900, ISM 868 Mhz, DCS 1800 Mhz / PCS1.9 Ghz, UMTS 2.1 Ghz BLUETOOTH 2.4 GHz
vswr	<2:1
impedance	50 Ohms
polarization	VERTICAL
gain (dbi)	2.2 dBi Max
power handling	25W
cable	RG174
cable length	upon request
connector	upon request
housing size	56 mm x 16 mm
operating temp.	-40°C to +85°C

2J0704-C96



specification

mounting	TELEMATIC
frequency	AMPS 824-894 Mhz, GSM 900, ISM 868 Mhz, DCS 1800 Mhz / PCS1.9 Ghz
vswr	<2.5:1
impedance	50 Ohms
polarization	VERTICAL
gain (dbi)	2 dBi
power handling	25W
connector	Fakra D type Bordeaux male
screw diameter and nut size	M10 and M10
housing size	77 mm x 13.6 mm
operating temp.	-40°C to +85°C

2J010 and 2J010_2400 MHz



specification

mounting	TELEMATIC
frequency	AMPS 824-894 Mhz, GSM 900, ISM 868 Mhz, DCS 1800 Mhz / PCS1.9 Ghz, UMTS 2.1 Ghz or BLUETOOTH 2.4 GHz
vswr	<2:1
impedance	50 Ohms
polarization	VERTICAL
gain (dbi)	2.2 dBi Max
power handling	25W
connector	SMA male R/A
housing size	52 mm x 18.23 mm x 9.53 mm
operating temp.	-40°C to +85°C

2J020 and 2J020_2400 MHz



specification

mounting	TELEMATIC
frequency	AMPS 824-894 Mhz, GSM 900, ISM 868 Mhz, DCS 1800 Mhz / PCS1.9 Ghz, UMTS 2.1 Ghz or BLUETOOTH 2.4 GHz
vswr	<2:1
impedance	50 Ohms
polarization	VERTICAL
gain (dbi)	2.2 dBi Max
power handling	25W
connector	SMA male
housing size	53.85 mm x 9.7 mm
operating temp.	-40°C to +85°C

mounting	TELEMATIC
frequency	AMPS 824-894 Mhz, GSM 900, ISM 868 Mhz, DCS 1800 Mhz / PCS1.9 Ghz, UMTS 2.1 Ghz
vswr	<2:1
impedance	50 Ohms
polarization	VERTICAL
gain (dbi)	2.2 dBi Max
power handling	25W
connector	SMA male
housing size	53.85 mm x 9.7 mm
operating temp.	-40°C to +85°C

specification



2J020W

mounting	TELEMATIC
frequency	AMPS 824-894 Mhz, GSM 900, ISM 868 Mhz, DCS 1800 MHz / PCS 1.9 Ghz, UMTS 2.1 Ghz / BLUETOOTH 2.4 Ghz
vswr	<2:1
impedance	50 Ohms
polarization	VERTICAL
gain (dbi)	2.2 dBi Max
power handling	25W
connector	FME female
housing size	60.1 mm x 9.8 mm
operating temp.	-40°C to +85°C

specification



2J030W

mounting	TELEMATIC
frequency	AMPS 824-894 Mhz, GSM 900, DCS 1800 Mhz / PCS1.9 Ghz, UMTS 2.1 GHZ or BLUETOOTH 2.4 GHZ
vswr	<2.5:1
impedance	50 Ohms
polarization	VERTICAL
gain (dbi)	2.2 dBi Max
power handling	25W
connector	FME female R/A
housing size	53.15 mm x 25.1 mm x 9.75 mm
operating temp.	-40°C to +85°C

specification



2J040 and 2J040_2400 MHz

mounting	TELEMATIC
frequency	AMPS 824-894 Mhz, GSM 900, ISM 868 Mhz, DCS 1800 Mhz / PCS1.9 Ghz, UMTS 2.1 Ghz
vswr	<2:1
impedance	50 Ohms
polarization	VERTICAL
gain (dbi)	2.2 dBi Max
power handling	25W
connector	SMA male
housing size	54.7 mm x 13.4 mm
operating temp.	-40°C to +85°C

specification



2J050

2J0502



specification

mounting	TELEMATIC
frequency	WIFI/BLUETOOTH 2.4 GHz and 5.0 GHz
vswr	<1.5:1
impedance	50 Ohms
polarization	VERTICAL
gain (dbi)	0 dBi for 2.4 GHz and 2 dBi for 5.0 GHz
power handling	20W
connector	SMA male
housing size	54.7 mm x 13.4 mm
operating temp.	-40°C to +85°C

2J064



specification

mounting	TELEMATIC
frequency	AMPS 824-894 Mhz, GSM 900, ISM 868 Mhz, DCS 1800 Mhz / PCS 1900 Mhz, UMTS 2.1 GHz, BLUETOOTH 2.4 GHz
vswr	<2:1
impedance	50 Ohms
polarization	VERTICAL
gain (dbi)	2.2 dBi Max
power handling	25W
connector	TNC male
housing size	61.8 mm x 14.45 mm
operating temp.	-40°C to +85°C

2JW04



specification

mounting	TELEMATIC
frequency	GSM 900, DCS 1800 MHz
vswr	<2:1
impedance	50 Ohms
polarization	VERTICAL
gain (dbi)	2.2 dBi at 900 MHz
power handling	25W
connector	FME female
housing size	146 mm x 10 mm
operating temp.	-40°C to +85°C

2JW03



specification

mounting	TELEMATIC
frequency	WIFI/BLUETOOTH 2.4 GHz
vswr	<2:1
impedance	50 Ohms
polarization	VERTICAL
gain (dbi)	5 dBi
power handling	25W
connector	SMA RP male
housing size	173 mm x 9.8 mm
operating temp.	-40°C to +85°C

wireless antennas : telematic and body mount

mounting	TELEMATIC
frequency	AMPS 824-894 Mhz, GSM 900, ISM 868 Mhz, DCS 1800 Mhz / PCS1.9, UMTS 2.1 Ghz / BLUETOOTH 2.4 Ghz
vswr	<2:1
impedance	50 Ohms
polarization	VERTICAL
gain (dbi)	0 dBi Max
power handling	25W
connector	upon request
housing size	114.6 mm x 10 mm
operating temp.	-40°C to +85°C

specification



2JW031

mounting	TELEMATIC
frequency	WIFI/BLUETOOTH 2.4 Ghz
vswr	<2:1
impedance	50 Ohms
polarization	VERTICAL
gain (dbi)	2.2 dBi
power handling	25W
connector	upon request
housing size	114.6 mm x 10 mm
operating temp.	-40°C to +85°C

specification



2JW032

mounting	TELEMATIC
frequency	WIFI/BLUETOOTH 2.4 Ghz, 5.1-5.9 GHz
vswr	<2:1
impedance	50 Ohms
polarization	VERTICAL
gain (dbi)	5 dBi Max
power handling	25W
connector	upon request
housing size	77.4 mm x 10 mm
operating temp.	-40°C to +85°C

specification



2JW035

mounting	BODY MOUNT
frequency	AMPS 824-894 Mhz, GSM 900, ISM 868 Mhz, DCS 1800 Mhz / PCS1.9 Ghz, UMTS 2.1 Ghz
vswr	<2:1
impedance	50 Ohms
polarization	VERTICAL
gain (dbi)	0 dBi Max
power handling	100W
cable	RG58
cable length and connector	upon request
housing size	76.5 mm x 30 mm
operating temp.	-40°C to +85°C

specification



2J120B

2J120BF



specification

mounting	BODY MOUNT
frequency	AMPS 824-894 MHz, ISM 868 MHz, GSM 900 DCS 1800 MHz / PCS1.9 GHz, UMTS 2.1 GHz / BLUETOOTH 2.4 GHz
vswr	<2:1
impedance	50 Ohms
polarization	VERTICAL
gain (dBi)	0 dBi
power handling	100W
cable	RG58
cable length	upon request
connector	upon request
housing size	76 mm x 29 mm
operating temp.	-40°C to +85°C

2J680



specification

mounting	BODY MOUNT
frequency	AMPS 824-894 MHz, ISM 868 MHz, GSM 900 DCS 1800 MHz / PCS1.9 GHz, UMTS 2.1 GHz / BLUETOOTH 2.4 GHz, LTE 790-860, 2500-2690 MHz
vswr	<2:5:1
impedance	50 Ohms
polarization	LINEAR
gain (dBi)	2 dBi Max
power handling	50 W
cable	RG174
cable length	upon request
connector	upon request
housing size	107.6 mm x 49.6 mm x 37.6 mm
operating temp.	-40°C to +85°C

2J610B



specification

mounting	BODY MOUNT
frequency	AMPS 824-894 MHz, ISM 868 MHz, GSM 900 DCS 1800 MHz / PCS 1.9 GHz, UMTS 2.1 GHz BLUETOOTH 2.4 GHz
vswr	<2:1
impedance	50 Ohms
polarization	HORIZONTAL
gain (dBi)	2.14 dBi Max
power handling	50 W
cable	RG174
cable length	upon request
connector	upon request
mounting hole	10.5 mm dia.
housing size	80.5 mm x 75.5 mm x 22.3mm
operating temp.	-40°C to +85°C

mounting	BODY MOUNT
frequency	ISM 868 MHz
mounting hole	10.5 mm dia.
vswr	<1.5:1
impedance	50 Ohms
polarization	LINEAR
gain (dBi)	0 dBi
power handling	50W
cable	RG174
cable length	upon request
connector	upon request
housing size	80.5 mm x 75.5 mm x 22.3 mm
operating temp.	-40 °C to +85 °C

specification



2J6110B

mounting	BODY MOUNT
frequency	AMPS 824-894 MHz, ISM 868 MHz, GSM 900, DCS 1800 MHz / PSC 1.9 GHz, UMTS 2.1 GHz, BLUETOOTH 2.4 GHz
vswr	<2:1
impedance	50 Ohms
polarization	LINEAR
gain (dBi)	2.2 dBi
power handling	50 W
cable	RG174
cable length	upon request
connector	upon request
housing size	76 mm x 17 mm
operating temp.	-40 °C to +85 °C

specification



2J664B

mounting	BODY MOUNT
frequency	AMPS 824-894 MHz, GSM 900, DCS 1800 MHz / PSC 1.9 GHz, UMTS 2.1 GHz
vswr	<3:1
impedance	50 Ohms
polarization	LINEAR
gain (dBi)	0 dBi
power handling	25W
cable	RG174
cable length	upon request
connector	upon request
housing size	52 mm x 26 mm
operating temp.	-40 °C to +85 °C

specification



2J474B

2J662B



specification

mounting	BODY MOUNT
frequency	WIFI/BLUETOOTH 2.4 GHz, 5.1-5.9 GHz
vswr	<2:1
impedance	50 Ohms
polarization	HORIZONTAL
gain (dBi)	5 dBi Max
power handling	50W
cable	RG174
cable length	upon request
connector	upon request
housing size	76 mm x 17 mm
operating temp.	-40°C to +85°C

2J672B



specification

mounting	BODY MOUNT
frequency	WIFI/BLUETOOTH 2.4 GHz, 5.1-5.9 GHz
vswr	<2.5:1
impedance	50 Ohms
polarization	HORIZONTAL
gain (dBi)	5 dBi Max at 2.4 GHz, 2 dBi at 5.8 GHz
power handling	50 W
cable	RG174
cable length	upon request
connector	upon request
housing size	75.6 mm x 54.5 mm
operating temp.	-40°C to +85°C

2J612B



specification

mounting	BODY MOUNT
frequency	876-924 MHz
vswr	<2.5:1
impedance	50 Ohms
polarization	HORIZONTAL
gain (dBi)	3 dBi
power handling	25 W
connector	N type female
housing size	80 mm x 74 mm x 24 mm
operating temp.	-40°C to +85°C

wireless antennas : wall mount

mounting	WALL MOUNT
frequency	WIFI/BLUETOOTH 2.4 GHz, 5.0 GHz, 5.9 GHz
vswr	<2:1
impedance	50 Ohms
gain (dBi)	12 dBi
beamwidth (horizontal)	40 degrees
beamwidth (vertical)	30 degrees
cable	RG58
cable length	upon request
connector	N type female
housing size	175 mm x 104 mm x 104 mm
operating temp.	-40 °C to +85 °C

specification



2JWIFI12

mounting	WALL MOUNT
frequency	AMPS 824-894 MHz, ISM 868 MHz, GSM 900, DCS 1800 MHz / PSC 1.9 GHz, UMTS 2.1 GHz, BLUETOOTH 2.4 GHz
vswr	<2:1
impedance	50 Ohms
polarization	VERTICAL
gain (dBi)	2.2 dBi Max
power handling	100 W
cable	RG58
cable length	upon request
connector	upon request
housing size	240 mm x 115 mm x 30 mm
operating temp.	-40 °C to +85 °C

specification



2J205GP

mounting	BODY MOUNT
frequency	WIFI/BLUETOOTH 2.4 GHz
vswr	<2:1
impedance	50 Ohms
polarization	VERTICAL
gain (dBi)	5 dBi Max
power handling	20W
cable	RG58
cable length	upon request
connector	upon request
housing size	170 mm x 115 mm x 30 mm
operating temp.	-40 °C to +85 °C

specification



2J230GP

2J200GP



specification

mounting	WALL MOUNT
frequency	AMPS 824-894 MHz, ISM 868 MHz, GSM 900, DCS 1800 MHz / PCS 1.9 GHz, UMTS 2.1 GHz, BLUETOOTH 2.4 GHz
vswr	<2:1
impedance	50 Ohms
polarization	VERTICAL
gain (dBi)	2.2 dBi Max
power handling	100W
cable	RG58
cable length	upon request
connector	upon request
housing size	376 mm x 155 mm x 36 mm
operating temp.	-40°C to +85°C

2J200GPW



specification

mounting	WALL MOUNT
frequency	AMPS 824-894 MHz, ISM 868 MHz, GSM 900, DCS 1800 MHz / PCS 1.9 GHz, UMTS 2.1 GHz / BLUETOOTH 2.4 GHz
vswr	<2:1
impedance	50 Ohms
polarization	VERTICAL
gain (dBi)	2.2 dBi Max
power handling	100W
cable	RG58
cable length	upon request
connector	upon request
housing size	376 mm x 155 mm x 36 mm
operating temp.	-40°C to +85°C

TETRA ANTENNAS

TETRA (380 - 500 MHz)
ISM (433 MHz)

Patch antennas: page 24
Magnetic antennas: page 25
Telematic and Body mount antennas: page 26 - 27
Wall mount antennas: page 27

Glossary

M - magnetic, P - patch, MP - magnetic and patch, B - body mount, R - Resistor, W - white

2J

antenna conceptor



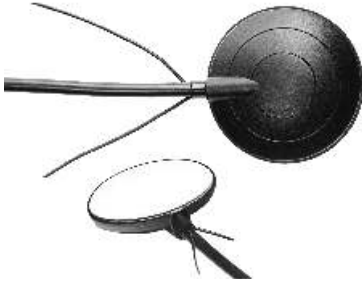
2J500L



specification

mounting	ON GLASS
frequency	TETRA 380-500 MHz /ISM 433 MHz/ AMPS 824-894 MHz, ISM 868 MHz, GSM 900, DCS 1800 MHz / PCS 1.9 GHz, UMTS 2.1 GHz / BLUETOOTH 2.4 GHz
vswr	
impedance	50 Ohms
polarization	LINEAR
gain (dBi)	2.2 dBi
power handling	25W
cable	RG174
cable length	upon request
connector	upon request
housing size	22.5 mm x 126.5 mm x 5-7 mm
operating temp.	-40°C to +85°C

2J530



specification

mounting	ON GLASS
frequency	TETRA 380-500 MHz /ISM 433 MHz/ AMPS 824-894 MHz, GSM 900, DCS 1800 MHz / PCS 1.9 GHz, UMTS 2.1 GHz / BLUETOOTH 2.4 GHz
vswr	
impedance	50 Ohms
polarization	HORIZONTAL
gain (dBi)	0 dBi
power handling	60 W
cable	RG58
cable length	upon request
connector	upon request
housing size	52 mm x 13 mm
operating temp.	-40°C to +85°C

2J545



specification

mounting	ON GLASS
frequency	TETRA 380-500 MHz / ISM 433 MHz
vswr	<2:1
impedance	50 Ohms
polarization	LINEAR
gain (dBi)	2 dBi
power handling	35W
cable	RG174
cable length and connector	upon request
housing size	112.5 mm x 11.1 mm
operating temp.	-40°C to +85°C

2J5410



specification

mounting	ON GLASS
frequency	TETRA 380-500 MHz / ISM 433 MHz
vswr	<2:1
impedance	50 Ohms
polarization	LINEAR
gain (dBi)	2 dBi
power handling	35W
cable	RG174
cable length and connector	upon request
housing size	112.5 mm x 11.1 mm
operating temp.	-40°C to +85°C

tetra antennas : magnetic

mounting	ANY METALIC SURFACE
frequency	TETRA 380-500 MHz / ISM 433 MHz
vswr	<1.5:1
impedance	50 Ohms
polarization	VERTICAL
gain (dbi)	5 dBi
power handling	30W
cable	RG174
cable length and connector	upon request
housing size	404 mm x 31 mm
operating temp.	-40°C to +85°C

specification



21330M

mounting	ANY METALIC SURFACE
frequency	TETRA 380-500 MHz / ISM 433 MHz
vswr	<2:1
impedance	50 Ohms
polarization	VERTICAL
gain (dbi)	2 dBi
power handling	25W
cable	RG174
cable length and connector	upon request
housing size	165 mm x 31 mm
operating temp.	-40°C to +85°C

specification



21340M

mounting	ANY METALIC SURFACE
frequency	TETRA 380-500 MHz / ISM 433 MHz
vswr	<2:1
impedance	50 Ohms
polarization	HORIZONTAL
gain (dbi)	6 dBi
power handling	50W
cable	RG58
cable length and connector	upon request
housing size	142.6 mm x 49.5 mm
operating temp.	-40°C to +85°C

specification



216510M

2J0710



specification

mounting	TELEMATIC
frequency	TETRA 380-500 MHz / ISM 433 MHz
vswr	<1.5:1 at center/ <2:1 420-450 MHz/ <4:1 395-485 MHz
impedance	50 Ohms
polarization	VERTICAL
gain (dbi)	2 dBi
power handling	25W
connector	M3, M4, M5 mating threads
housing size	62 mm x 13.5mm
operating temp.	-40°C to +85°C

2JW08



specification

mounting	TELEMATIC
frequency	TETRA 380-500 MHz / ISM 433 MHz
vswr	<2:1
impedance	50 Ohms
polarization	VERTICAL
gain (dbi)	2 dBi
bandwidth	Fc +/- 20 MHz
connector	SMA male
housing size	133 mm x 9.7 - 12.9 mm
operating temp.	-40°C to +85°C

2JD03



specification

mounting	BODY MOUNT
frequency	TETRA 380 - 500 MHz / ISM 433 MHz / alternative 240 MHz - 2400 MHz
vswr	<2:1
bandwidth	120 MHz +/- 20 MHz
impedance	50 Ohms
polarization	LINEAR
gain (dbi)	2.14 dBi
power handling	50 W
cable	RG174
cable length and connector	upon request
housing size	29.2 mm x 30 mm x 14 mm
operating temp.	-40°C to +85°C

2J30B



specification

mounting	BODY MOUNT
frequency	TETRA 380 - 500 MHz / ISM 433 MHz
vswr	<2:1
impedance	50 Ohms
polarization	VERTICAL
gain (dbi)	2 dBi
power handling	100 W
cable	RG58
cable length and connector	upon request
housing size	175 mm x 33 mm
operating temp.	-40°C to +85°C

tetra antennas : telematic and body mount

mounting	WALL MOUNT
frequency	TETRA 380-500 MHz / ISM 433 MHz
vswr	<2:1
impedance	50 Ohms
polarization	VERTICAL
gain (dbi)	2.14 dBi
power handling	20W
cable	RG58
cable length and connector	upon request
housing size	285 mm x 16.5 mm dia.
operating temp.	-40°C to +85°C

specification



2J240CP

mounting	BODY MOUNT
frequency	TETRA 380-500 MHz / ISM 433 MHz
vswr	<2:1
impedance	50 Ohms
polarization	VERTICAL
gain (dbi)	2 dBi
power handling	50W
cable	RG174
cable length and connector	upon request
housing size	220 mm x 60 mm
operating temp.	-40°C to +85°C

specification



2J7510B

mounting	BODY MOUNT
frequency	TETRA 380-500 MHz / ISM 433 MHz
vswr	<2:1
impedance	50 Ohms
polarization	HORIZONTAL
gain (dbi)	6 dBi
power handling	50W
bandwidth	15 MHz +/- 5 MHz
cable	RG58
cable length and connector	upon request
housing size	142.6 mm x 49.5 mm
operating temp.	-40°C to +85°C

specification



2J6510B

GPS/GLONASS ANTENNAS

GPS (1575.42 MHz)
Glonass (1592 - 1610 MHz)
GPS/GLONASS (1572 - 1610 MHz)

Patch and Magnetic antennas: page 29 - 30
Body mount antennas: page 31 - 32

Glossary

*M - magnetic, P - patch, MP - magnetic and patch, B - body mount, F - filter, D - diode, G - Glonass
W - white*

2J

antenna conceptor



GPS/GLONASS antennas : patch and magnetic

mounting	MAGNETIC OR PATCH
frequency	GPS 1575.42 MHz / GLONASS 1592-1610 MHz /GPS/GLONASS(1572- 1610 MHz)
vswr	<1.2:1
impedance	50 Ohms
polarization	RHCP
LNA gain	26 dB at 3V, 28 dB at 5V
voltage supply	2.7V - 5.5V
current	15mA - 25mA
power (max.)	138mW
cable	RG174
cable length and connector	upon request
housing size	43.3 mm x 17.3 mm
operating temp.	-40 °C to +85 °C

specification



2J410MP and 2J410GMP

mounting	MAGNETIC OR PATCH
frequency	GPS 1575.42MHz / GLONASS 1572 - 1610 MHz
vswr	<1.2:1
impedance	50 Ohms
polarization	RHCP
LNA gain	26 dB at 3V, 28 dB at 5V
voltage supply	2.7V - 5.5V
current	15mA - 25mA
power (max.)	138mW
cable	RG174
cable length and connector	upon request
housing size	41 mm x 13.7 mm
operating temp.	-40 °C to +85 °C

specification



2J431MP and 2J431GMP

mounting	MAGNETIC OR PATCH
frequency	GPS 1575.42 MHz / GLONASS 1592-1610 MHz /GPS/GLONASS(1572- 1610 MHz)
vswr	<1.2:1
impedance	50 Ohms
polarization	RHCP
LNA gain	26 dB at 3V, 28 dB at 5V
voltage supply	2.7V - 5.5V
current	15mA - 25mA
power (max.)	138mW
cable	RG174
cable length and connector	upon request
housing size	38.2 mm x 14 mm
operating temp.	-40 °C to +85 °C

specification



2J433MP/G/GF/GFD

2J435MP



specification

mounting	MAGNETIC/PATCH
frequency	GPS 1575.42 MHz
vswr	<1.2:1
impedance	50 Ohms
polarization	RHCP
LNA gain	26 dB at 3V, 28 dB at 5V
voltage supply	2.7V - 5.5V
current	15mA - 25mA
power (max.)	138mW
cable	RG174
cable length and connector	upon request
housing size	28.2 mm x 13.2 mm
operating temp.	-40 °C to +85 °C

2J450MP and 2J450GMP



specification

mounting	MAGNETIC/PATCH
frequency	GPS 1575.42 MHz / GLONASS 1592-1610 MHz MHz/GPS/GLONASS (1592 - 1610 MHz)
vswr	<1.2:1
impedance	50 Ohms
polarization	RHCP
LNA gain	32 dB at 5V
voltage supply	1.8V - 5V
current	5mA (1.8V), 13mA (3.3V), 25mA (5V)
power (max.)	125mW
cable	RG174
cable length and connector	upon request
housing size	43 mm x 12.7 mm
operating temp.	-40 °C to +85 °C

2J7501M and 2J7501MG



specification

mounting	MAGNETIC/PATCH
frequency	GPS 1575.42 MHz / GLONASS 1592-1610 MHz MHz/GPS/GLONASS (1592 - 1610 MHz)
vswr	<1.5:1
impedance	50 Ohms
polarization	RHCP
LNA gain	26 dB at 3V, 28 dB at 5V
voltage supply	2.7V - 5.5V
current	15mA - 25mA
power (max.)	138mW
cable	RG174
cable length and connector	upon request
housing size	59.5 mm x 14.6 mm
operating temp.	-40 °C to +85 °C

GPS/GLONASS antennas : body mount

mounting	BODY MOUNT
frequency	GPS 1575.42 MHz / GLONASS 1592-1610 MHz / GPS/GLONASS (1592 - 1610 MHz)
vswr	<1.2:1
impedance	50 Ohms
polarization	RHCP
LNA gain	26 dB at 3V, 28 dB at 5V
voltage supply	2.7V - 5.5V
current	15mA - 25mA
power (max.)	138mW
cable	RG174
cable length and connector	upon request
housing size	41 mm x 19 mm
operating temp.	-40 °C to +85 °C

specification



2J410B and 2J410BG

mounting	BODY MOUNT
frequency	GPS 1575.42 MHz / GLONASS 1592 - 1610 MHz
vswr	<1.2:1
impedance	50 Ohms
polarization	RHCP
LNA gain	22 dB at 5V
voltage supply	1.8V - 5V
current	5mA (1.8V), 13mA (3.3V), 25mA (5V)
power (max.)	138mW
cable	RG174
cable length and connector	upon request
housing size	52 mm x 26 mm
operating temp.	-40 °C to +85 °C

specification



2J471B and 2J471BG

mounting	BODY MOUNT
frequency	GPS 1575.42 MHz / GLONASS 1592-1610 MHz
vswr	<1.5:1
impedance	50 Ohms
polarization	RHCP
LNA gain	26 dB at 3V, 28 dB at 5V
voltage supply	2.7V - 5.5V
current	15mA - 25mA
power (max.)	138mW
cable	RG174
cable length and connector	upon request
housing size	76 mm x 17 mm
operating temp.	-40 °C to +85 °C

specification



2J661B and 2J661BG

2J861B and 2J861BG



specification

mounting	BODY MOUNT
frequency	GPS 1575.42 MHz / GLONASS 1592-1610 MHz
vswr	<1.2:1
impedance	50 Ohms
polarization	RHCP
LNA gain	26 dB at 3V, 28 dB at 5V
voltage supply	2.7V - 5.5V
current	15mA - 25mA
power (max.)	138mW
cable	RG174
cable length and connector	upon request
housing size	91 mm x 52 mm x 48 mm
operating temp.	-40 °C to +85 °C

2J7501B and 2J7501BG



specification

mounting	BODY MOUNT
frequency	GPS 1575.42 MHz / GLONASS 1592-1610 MHz
vswr	<1.5:1
impedance	50 Ohms
polarization	RHCP
LNA gain	26 dB at 3V, 28 dB at 5V
voltage supply	2.7V - 5.5V
current	15mA - 25mA
power (max.)	138mW
cable	RG174
cable length and connector	upon request
housing size	59.5 mm x 14.6 mm
operating temp.	-40 °C to +85 °C

2J6501B and 2J6501BG



specification

mounting	BODY MOUNT
frequency	GPS 1575.42 MHz / GLONASS 1592-1610 MHz
vswr	<2:1
impedance	50 Ohms
polarization	RHCP
LNA gain	26 dB at 3V, 28 dB at 5V
voltage supply	2.7V - 5.5V
current	15mA - 25mA
power (max.)	138mW
cable	RG174
cable length and connector	upon request
housing size	142.6 mm x 49.5 mm
operating temp.	-40 °C to +85 °C

COMBINED ANTENNAS

GPS + GSM: page 34 - 39

GPS + WIFI: page 40

GSM + WIFI: page 41

GPS + TETRA: page 42 - 43

GSM + TETRA: page 44

GPS + GSM + TETRA: page 44

GPS + GSM + WIFI: page 45

GPS + WIFI + TETRA: page 46

Glossary

*M - magnetic, P - patch, MP - magnetic and patch, B - body mount, F - filter, D - diode, G - Glonass
W - white*

2J

antenna conceptor



2J420P and 2J420PG



specification

mounting	PATCH
frequency	AMPS 824-894 MHz, ISM 868 MHz, GSM 900, DCS 1800 MHz / PCS 1.9 GHz, UMTS 2.1 GHz / GPS 1575.42 MHz / GLONASS 1592 - 1610 GHz
vswr	<2:1
impedance	50 Ohms
polarization	GSM: HORIZONTAL, GNSS: RHCP
LNA gain	GNSS: 26 dB at 3V, 28 dB at 5V
gain	0 dBi
voltage supply	2.7V - 5.5V
current	15mA - 25mA
power (max.)	138mW
power handling	25W
cable	RG174
cable length and connector	upon request
housing size	97,8 mm x 27 mm x 15,7-5,6 mm
operating temp.	-40 °C to +85 °C

2J425P and 2J425PG



specification

mounting	PATCH
frequency	GSM 900, DCS 1800 MHz / PCS 1.9 GHz, UMTS 2.1 GHz / GPS 1575.42 MHz / GLONASS 1592 - 1610 GHz
vswr	<2:1
impedance	50 Ohms
polarization	GSM: LINEAR, GNSS: RHCP
LNA gain	GNSS: 26 dB at 3V, 28 dB at 5V
gain	0 dBi
voltage supply	2.7V - 5.5V
current	15mA - 25mA
power (max.)	138mW
power handling	35W
cable	RG174
cable length and connector	upon request
housing size	77.1 mm x 34.4 mm x 13.5mm
operating temp.	-40 °C to +85 °C

2J620P and 2J620PG



specification

mounting	PATCH
frequency	AMPS 824-894 MHz, ISM 868 MHz, GSM 900, DCS 1800 MHz / PCS 1.9 GHz, UMTS 2.1 GHz / BLUETOOTH 2.4 GHz / GPS 1575.42 MHz / GLONASS 1592 - 1610 GHz
vswr	<2:1
impedance	50 Ohms
polarization	GSM: LINEAR, GNSS: RHCP
LNA gain	GNSS: 26 dB at 3V, 28 dB at 5V
gain	2.14 dBi
voltage supply	2.7V - 5.5V
current	15mA - 25mA
power (max.)	138mW
power handling	35W
cable	RG174
cable length and connector	upon request
housing size	77 mm x 12 mm
operating temp.	-40 °C to +85 °C

combined antennas : GPS + GSM

mounting	MAGNETIC/PATCH
frequency	AMPS 824-894 MHz, ISM 868 MHz, GSM 900, DCS 1800 MHz / PCS 1.9 GHz, UMTS 2.1 GHz / BLUETOOTH 2.4 GHz / GPS 1575.42 MHz / GLONASS 1592 - 1610 GHz
vswr	GSM/WIFI <2:1, GNSS <1.2:1
impedance	50 Ohms
polarization	GSM: HORIZONTAL, GNSS: RHCP
LNA gain	GNSS: 26 dB at 3V, 28 dB at 5V
gain	0 dBi
voltage supply	2.7V - 5.5V
current	15mA - 25mA
power (max.)	138mW
power handling	50W
cable	RG174
cable length and connector	upon request
housing size	52.5 mm x 13 mm
operating temp.	-40 °C to +85 °C

specification



2J630MP and 2J630GMP

mounting	MAGNETIC/PATCH
frequency	AMPS 824-894 MHz, ISM 868 MHz, GSM 900, DCS 1800 MHz / PCS 1.9 GHz, UMTS 2.1 GHz / BLUETOOTH 2.4 GHz / GPS 1575.42 MHz / GLONASS 1592 - 1610 GHz
vswr	GSM/WIFI <2:1, GNSS <1.2:1
impedance	50 Ohms
polarization	GSM: HORIZONTAL, GNSS: RHCP
LNA gain	GNSS: 26 dB at 3V, 28 dB at 5V
gain	0 dBi
voltage supply	2.7V - 5.5V
current	15mA - 25mA
power (max.)	138mW
power handling	35W
cable	RG174
cable length and connector	upon request
housing size	52.5 mm x 13 mm
operating temp.	-40 °C to +85 °C

specification



2J630GFMP

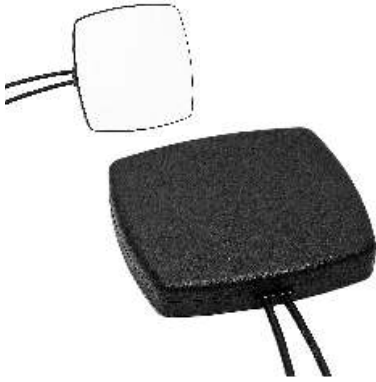
mounting	MAGNETIC/PATCH
frequency	AMPS 824-894 MHz, ISM 868 MHz, GSM 900, DCS 1800 MHz / PCS 1.9 GHz, UMTS 2.1 GHz / GPS 1575.42 MHz / GLONASS 1592 - 1610 GHz
vswr	<2:1
impedance	50 Ohms
polarization	GSM: VERTICAL, GNSS: RHCP
LNA gain	32 dB at 5V
gain	0 dBi
voltage supply	1.8V - 5V
current	5mA (1.8V), 13mA (3.3V), 25mA (5V)
power (max.)	125mW
power handling	50W
cable	RG174
cable length and connector	upon request
housing size	50.2 mm x 40.2 mm x 12.6 mm
operating temp.	-40 °C to +85 °C

specification



2J460MP and 2J460GMP

2J600M and 2J600MG



specification

mounting	MAGNETIC
frequency	AMPS 824-894 MHz, GSM 900, DCS 1800 MHz / PCS 1.9 GHz, UMTS 2.1 GHz / GPS 1575.42 MHz / GLONASS 1592 - 1610 GHz
vswr	<2:1
impedance	50 Ohms
polarization	GSM: HORIZONTAL, GNSS: RHCP
LNA gain	GNSS: 26 dB at 3V, 28 dB at 5V
gain	0 dBi
voltage supply	2.7V - 5.5V
current	15mA - 25mA
power (max.)	138mW
power handling	50W
cable	RG174
cable length and connector	upon request
housing size	80 mm x 75 mm x 13 mm
operating temp.	-40 °C to +85 °C

2J6500M and 2J6500MG



specification

mounting	MAGNETIC
frequency	AMPS 824-894 MHz, GSM 900, DCS 1800 MHz, PCS 1900 MHz / GPS 1575.42 MHz / GLONASS 1592 - 1610 GHz
vswr	GSM: <3:1, GNSS: <2:1,
impedance	50 Ohms
polarization	GSM: VERTICAL, GNSS: RHCP
LNA gain	26 dB at 3V, 28 dB at 5V
gain	0 dBi
voltage supply	2.7V - 5.5V
current	15mA - 25mA
power (max.)	138mW
power handling	35W
cable	RG174
cable length and connector	upon request
housing size	142.6 mm x 49.5 mm
operating temp.	-40 °C to +85 °C

2J7500M and 2J7500MG



specification

mounting	MAGNETIC
frequency	GSM 900, DCS 1800 MHz / GPS 1575.42 MHz / GLONASS 1592 - 1610 GHz
vswr	GSM: <2:1, GNSS: <1.5:1,
impedance	50 Ohms
polarization	GSM: VERTICAL, GNSS: RHCP
LNA gain	26 dB at 3V, 28 dB at 5V
gain	2 dBi
voltage supply	2.7V - 5.5V
current	15mA - 25mA
power (max.)	138mW
power handling	50W
cable	RG174
cable length and connector	upon request
housing size	59.5 mm x 14.6 mm
operating temp.	-40 °C to +85 °C

combined antennas : GPS + GSM

mounting	BODY MOUNT
frequency	GSM 900, DCS 1800 MHz / PCS 1.9 GHz, UMTS 2.1 GHz / GPS 1575.42 MHz / GLONASS 1592 - 610 GHz
vswr	<2:1
impedance	50 Ohms
polarization	GSM: VERTICAL, GNSS: RHCP
LNA gain	32 dB at 5V
gain	0 dBi
voltage supply	1.8V - 5V
current	5mA (1.8V), 13mA (3.3V), 25mA (5V)
power (max.)	125mW
power handling	25W
cable	RG174
cable length and connector	upon request
housing size	52 mm x26 mm
operating temp.	-40 °C to +85 °C

specification



2J470B and 2J470BG

mounting	BODY MOUNT
frequency	AMPS 824-894 MHz, ISM 868 MHz, GSM 900, DCS 1800 MHz / PCS 1.9 GHz, UMTS 2.1 GHz / GPS 1575.42 MHz / GLONASS 1592 - 1610 GHz
vswr	<2:1
impedance	50 Ohms
polarization	GSM: HORIZONTAL, GNSS: RHCP
LNA gain	GNSS: 26 dB at 3V, 28 dB at 5V
gain	0 dBi
voltage supply	2.7V - 5.5V
current	15mA - 25mA
power (max.)	125mW
power handling	50W
cable	RG174
cable length and connector	upon request
housing size	80 mm x 75 mm x 15.5 mm
operating temp.	-40 °C to +85 °C

specification



2J600B and 2J600BG

mounting	BODY MOUNT
frequency	AMPS 824-894 MHz, ISM 868 MHz, GSM 900, DCS 1800 MHz / PCS 1.9 GHz, UMTS 2.1 GHz / BLUETOOTH 2.4 GHz / GPS 1575.42 MHz / GLONASS 1592 - 1610 MHz
vswr	GSM / WIFI: <2:1, GNSS: <1.2:1,
impedance	50 Ohms
polarization	GSM: LINEAR, GNSS: RHCP
LNA gain	GNSS: 26 dB at 3V, 28 dB at 5V
gain	2.2 dBi max
voltage supply	2.7V - 5.5V
current	15mA - 25mA
power (max.)	138mW
power handling	50W
cable	RG174
cable length and connector	upon request
housing size	76 mm x 17 mm
operating temp.	-40 °C to +85 °C

specification



2J660B and 2J660BG

2J670B and 2J670BG



specification

mounting	BODY MOUNT
frequency	AMPS 824-894 MHz, GSM 900, ISM 868 MHz, DCS 1800 MHz / PCS 1.9 GHz / GPS 1575.42 MHz / GLONASS 1592 - 1610 GHz
vswr	GSM/WIFI: <2:1, GNSS: <1.2:1,
impedance	50 Ohms
polarization	GSM: HORIZONTAL, GNSS: RHCP
LNA gain	GNSS: 26 dB at 3V, 28 dB at 5V
gain	2.2 dBi max
voltage supply	2.7V - 5.5V
current	15mA - 25mA
power (max.)	138mW
power handling	50W
cable	RG174
cable length and connector	upon request
housing size	75,6 mm x 54,5 mm
operating temp.	-40 °C to +85 °C

2J860B and 2J860BG



specification

mounting	BODY MOUNT
frequency	AMPS 824-894 MHz, GSM 900, DCS 1800 MHz / PCS 1.9 GHz / UMTS 2.1 GHz / BLUETOOTH 2.4 GHz / GPS 1575.42 / GLONASS 1592 - 1610 MHz
vswr	GSM/WIFI: <3:1, GNSS: <2:1,
impedance	50 Ohms
polarization	GSM: VERTICAL, GNSS: RHCP
LNA gain	GNSS: 26 dB at 3V, 28 dB at 5V
gain	2.2 dBi max
voltage supply	2.7V - 5.5V
current	15mA - 25mA
power (max.)	138mW
power handling	50W
cable	RG174
cable length and connector	upon request
housing size	91 mm x 52 mm x 48 mm
operating temp.	-40 °C to +85 °C

2J850B and 2J850BG



specification

mounting	BODY MOUNT
frequency	AM 530kHz - 40 Mhz / FM 87.5 - 108 Mhz / AMPS 824-894 MHz, GSM 900, DCS 1800 MHz / BLUETOOTH 2.4GHz / GPS 1575.42 Mhz / GLONASS 1592 - 1610 Mhz
vswr	GSM/WIFI: <2:1, GNSS: <1.2:1,
impedance	50 Ohms
polarization	GSM: VERTICAL, GNSS: RHCP
LNA gain	27 dB at 5V
gain	AM/FM: 5 - 10 dBi
voltage supply	12V - 15V (AM/FM), 2.7V - 5.5V (GNSS)
current	15mA - 25mA
power (max.)	138mW
power handling	50W
cable	RG174
cable length and connector	upon request
housing size	430 mm x 98 mm x 58 mm
operating temp.	-40 °C to +85 °C

combined antennas : GPS + GSM

mounting	BODY MOUNT
frequency	AM 530kHz - 40 MHz / FM 87.5 - 108 MHz GPS 1575.42 MHz / GLONASS 1592 - 1610 MHz
vswr	GNSS: <1.2:1
impedance	50 Ohms
polarization	GSM: VERTICAL, GNSS: RHCP
LNA gain	27 dB at 5V
gain	FM: 0 dBi
voltage supply	2.7V - 5.5V
current	15mA - 25mA
power (max.)	138mW
power handling	50W
cable	RG174
cable length and connector	upon request
housing size	434 mm x 195 mm x 60 mm
operating temp.	-40 °C to +85 °C

specification



2J850BG_AVZ

mounting	BODY MOUNT
frequency	AMPS 824-894 MHz, ISM 868 MHz, GSM 900, DCS 1800 MHz / PCS 1.9 GHz / GPS 1575.42 MHz / GLONASS 1592 - 1610 GHz
vswr	GSM: <3:1, GNSS: <2:1,
impedance	50 Ohms
polarization	GSM: VERTICAL, GNSS: RHCP
LNA gain	26 dB at 3V, 28 dB at 5V
gain	0 dBi
voltage supply	2.7V - 5.5V
current	15mA - 25mA
power (max.)	138mW
power handling	35W
cable	RG174
cable length and connector	upon request
housing size	142.6 mm x 49.5 mm
operating temp.	-40 °C to +85 °C

specification



2J6500B and 2J6500BG

mounting	BODY MOUNT
frequency	GSM 900, DCS 1800 MHz / GPS 1575.42 MHz / GLONASS 1592 - 1610
vswr	GSM : <2:1, GNSS: <1.5:1,
impedance	50 Ohms
polarization	GSM: VERTICAL, GNSS: RHCP
LNA gain	26 dB at 3V, 28 dB at 5V
gain	2 dBi
voltage supply	2.7V - 5.5V
current	15mA - 25mA
power (max.)	138mW
power handling	50W
cable	RG174
cable length and connector	upon request
housing size	59.5 mm x 14.6 mm
operating temp.	-40 °C to +85 °C

specification



2J7500B and 2J7500BG

2J663B



specification

mounting	BODY MOUNT
frequency	WIFI/BLUETOOTH 2.4 GHz, 5.1 - 5.9 GHz / GPS 1575.42 MHz
vswr	WIFI: <2:1, GNSS: <1.2:1,
impedance	50 Ohms
polarization	WIFI: HORIZONTAL, GNSS: RHCP
LNA gain	28 dB
gain	5 dBi
voltage supply	3V - 5V
current	15mA - 25mA
power (max.)	138mW
power handling	50W
cable	RG174
cable length and connector	upon request
housing size	76 mm x 17 mm
operating temp.	-40 °C to +85 °C

2J673B



specification

mounting	BODY MOUNT
frequency	WIFI/BLUETOOTH 2.4 GHz, 5.1 - 5.9 GHz / GPS 1575.42 MHz
vswr	WIFI: <2:1, GNSS: <1.2:1,
impedance	50 Ohms
polarization	WIFI: HORIZONTAL, GNSS: RHCP
LNA gain	28 dB
gain	5 dBi
voltage supply	3V - 5V
current	15mA - 25mA
power (max.)	138mW
power handling	50W
cable	RG174
cable length and connector	upon request
housing size	75.6 mm x 54.5 mm
operating temp.	-40 °C to +85 °C

2J863B



specification

mounting	BODY MOUNT
frequency	WIFI/BLUETOOTH 2.4 GHz, 5.1 - 5.9 GHz / GPS 1575.42 MHz
vswr	WIFI: <2:1, GNSS: <1.2:1,
impedance	50 Ohms
polarization	WIFI: HORIZONTAL, GNSS: RHCP
LNA gain	28 dB
gain	5 dBi
voltage supply	3V - 5V
current	15mA - 25mA
power (max.)	138mW
power handling	50W
cable	RG174
cable length and connector	upon request
housing size	91 mm x 52 mm x 48 mm
operating temp.	-40 °C to +85 °C

combined antennas : GSM + WIFI

mounting	BODY MOUNT
frequency	AMPS 824-894 MHz, ISM 868 MHz, GSM 900, DCS 1800 MHz / PCS 1.9 GHz / UMTS 2.1 GHz / WIFI/BLUETOOTH 2.4 GHz, 5.0 GHz, 5.1 - 5.9 GHz
vswr	<2:1
impedance	50 Ohms
polarization	HORIZONTAL
gain	GSM: 2.2 dBi, WIFI: 2 dBi max at 2.4 GHz
power handling	50W
cable	RG174
cable length and connector	upon request
housing size	76 mm x 17 mm
operating temp.	-40 °C to +85 °C

specification



2J665B

mounting	BODY MOUNT
frequency	AMPS 824-894 MHz, ISM 868 MHz, GSM 900, DCS 1800 MHz / UMTS 2.1 GHz / WIFI/BLUETOOTH 2.4 GHz, 5.0 GHz, 5.9 GHz
vswr	<2:1
impedance	50 Ohms
polarization	HORIZONTAL
gain	GSM: 2.2 dBi
power handling	50W
cable	RG174
cable length and connector	upon request
housing size	75.6 mm x 54.5 mm
operating temp.	-40 °C to +85 °C

specification



2J675B

mounting	BODY MOUNT
frequency	AMPS 824-894 MHz, ISM 868 MHz, GSM 900, DCS 1800 MHz / UMTS 2.1 GHz / WIFI/BLUETOOTH 2.4 GHz
vswr	GSM: <2:1, WIFI: <1.2:1
impedance	50 Ohms
polarization	VERTICAL
gain	GSM: 3 dBi max, WIFI: 3 dBi max
power handling	50W
cable	RG174
cable length and connector	upon request
housing size	91 mm x 52 mm x 48 mm
operating temp.	-40 °C to +85 °C

specification



2J865B

2J615B and 2J615BG



specification

mounting	BODY MOUNT
frequency	TETRA 380 - 500 MHz / GPS 1575.42 MHz / GLONASS 1592 - 1610 MHz
vswr	<2:1
impedance	50 Ohms
polarization	TETRA: HORIZONTAL, GNSS: RHCP
LNA gain	27 dB
gain	0 dBi
voltage supply	2.7V - 5.5V
current	15mA - 25mA
power (max.)	138mW
power handling	50W
cable	RG174
cable length and connector	upon request
housing size	80 mm x 75 mm x 16.3mm
operating temp.	-40 °C to +85 °C

2J857B and 2J857BG



specification

mounting	BODY MOUNT
frequency	TETRA 380 - 500 MHz / GPS 1575.42 MHz / GLONASS 1592 - 1610 MHz
vswr	TETRA: <2:1, GNSS: <1.2:1
impedance	50 Ohms
polarization	TETRA: VERTICAL, GNSS: RHCP
LNA gain	GNSS: 26 dB at 3V, 28 dB at 5V
gain	2 dBi
voltage supply	2.7V - 5.5V
current	15mA - 25mA
power (max.)	138mW
power handling	30W
cable	RG174
cable length and connector	upon request
housing size	175 mm x 98 mm x 58 mm
operating temp.	-40 °C to +85 °C

2J6507B and 2J6507BG



specification

mounting	BODY MOUNT
frequency	TETRA 380 - 500 MHz / GPS 1575.42 MHz / GLONASS 1592 - 1610 MHz
vswr	<2:1
impedance	50 Ohms
polarization	TETRA: HORIZONTAL, GNSS: RHCP
LNA gain	GNSS: 26 dB at 3V, 28 dB at 5V
gain	6 dBi
voltage supply	2.7V - 5.5V
current	15mA - 25mA
power (max.)	138mW
power handling	50W
cable	RG174
cable length and connector	upon request
housing size	142.6 mm x 49.5 mm
operating temp.	-40 °C to +85 °C

combined antennas : GPS + TETRA

mounting	MAGNETIC
frequency	TETRA 380 - 500 MHz / GPS 1575.42 MHz / GLONASS 1592 - 1610 MHz
vswr	<2:1
impedance	50 Ohms
polarization	TETRA: HORIZONTAL, GNSS: RHCP
LNA gain	GNSS: 26 dB at 3V, 28 dB at 5V
gain	6 dBi
voltage supply	2.7V - 5.5V
current	15mA - 25mA
power (max.)	138mW
power handling	50W
cable	RG174
cable length and connector	upon request
housing size	142.6 mm x 49.5 mm
operating temp.	-40 °C to +85 °C

specification



2J6507M and 2J6507MG

mounting	BODY MOUNT
frequency	TETRA 380 - 500 MHz / GPS 1575.42 MHz / GLONASS 1592 - 1610 MHz
vswr	TETRA: <2:1, GNSS: <1.5:1
impedance	50 Ohms
polarization	TETRA: VERTICAL, GNSS: RHCP
LNA gain	GNSS: 26 dB at 3V, 28 dB at 5V
gain	2 dBi
voltage supply	2.7V - 5.5V
current	15mA - 25mA
power (max.)	138mW
power handling	50W
cable	RG174
cable length and connector	upon request
housing size	220 mm x 60 mm
operating temp.	-40 °C to +85 °C

specification



2J7507B and 2J7507BG

mounting	MAGNETIC
frequency	TETRA 380 - 500 MHz / GPS 1575.42 MHz / GLONASS 1592 - 1610 MHz
vswr	TETRA: <2:1, GNSS: <1.2:1
impedance	50 Ohms
polarization	TETRA: VERTICAL, GNSS: RHCP
LNA gain	GNSS: 26 dB at 3V, 28 dB at 5V
gain	2 dBi
voltage supply	2.7V - 5.5V
current	15mA - 25mA
power (max.)	138mW
power handling	50W
cable	RG174
cable length and connector	upon request
housing size	220 mm x 60 mm
operating temp.	-40 °C to +85 °C

specification



2J7507M and 2J7507MG

2J6520B



specification

mounting	BODY MOUNT
frequency	AMPS 824-894 MHz, GSM 900, DCS 1800 MHz, PCS 1.9 GHz / TETRA 380 - 500 MHz
vswr	GSM: <3:1, TETRA: <2:1
impedance	50 Ohms
polarization	GSM: VERTICAL, TETRA: HORIZONTAL
gain	GSM: 0 dBi, TETRA: 6 dBi
power handling	GSM: 35W, TETRA: 150W
cable	RG174
cable length and connector	upon request
housing size	143 mm x 57 mm
operating temp.	-40 °C to +85 °C

2J6520M



specification

mounting	MAGNETIC
frequency	AMPS 824-894 MHz, GSM 900, DCS 1800 MHz, PCS 1.9 GHz / TETRA 380 - 500 MHz
vswr	GSM: <3:1, TETRA: <2:1
impedance	50 Ohms
polarization	GSM: VERTICAL, TETRA: HORIZONTAL
gain	GSM: 0 dBi, TETRA: 6 dBi
power handling	GSM: 35W, TETRA: 150W
cable	RG174
cable length and connector	upon request
housing size	143 mm x 57 mm
operating temp.	-40 °C to +85 °C

2J858B and 2J858BG



specification

mounting	BODY MOUNT
frequency	TETRA 380 - 500 MHz / AMPS 824-894 MHz, ISM 868 MHz, GSM 900, DCS 1800 MHz / WIFI 2.4 GHz / GPS 1575.42 MHz / GLONASS 1592 - 1610 MHz
vswr	GSM: <3:1, TETRA: <1.2:1
impedance	50 Ohms
polarization	GSM/TETRA: VERTICAL, GNSS: RHCP
LNA gain	27 dB at 5V
gain	GSM: 3 dBi, TETRA: 2 dBi
voltage supply	2.7V - 5.5V
current	15mA - 25mA
power (max.)	138mW
power handling	50W
cable	RG174
cable length and connector	upon request
housing size	157 mm x 92 mm x 52 mm
operating temp.	-40 °C to +85 °C

combined antennas : GPS + GSM + WIFI

mounting	PATCH
frequency	GSM 900, DCS 1800 MHz, PCS 1900 MHz UMTS 2.1 MHz / WIFI/BLUETOOTH 2.4 GHz / GPS 1575.42 MHz / GLONASS 1592 - 1610 MHz
vswr	<2:1
impedance	50 Ohms
polarization	GSM/WIFI: HORIZONTAL, GNSS: RHCP
LNA gain	26 dB at 3V, 28 dB at 5V
gain	0 dBi
voltage supply	2.7V - 5.5V
current	15mA - 25mA
power (max.)	138mW
power handling	35W
cable	RG174
cable length and connector	upon request
housing size	77.1 mm x 34.4 mm x 13.5 mm
operating temp.	-40 °C to +85 °C

specification



2J426 and 2J426G

mounting	BODY MOUNT
frequency	AMPS 824 - 894 MHz, ISM 868 MHz, GSM 900, DCS 1800 MHz, PCS 1900 MHz, UMTS 2.1 MHz / WIFI/BLUETOOTH 2.4 GHz / GPS 1575.42 MHz / GLONASS 1592 - 1610 MHz
vswr	<2:1
impedance	50 Ohms
polarization	GSM/WIFI: HORIZONTAL, GNSS: RHCP
LNA gain	26 dB at 3V, 28 dB at 5V
gain	0 dBi
voltage supply	2.7V - 5.5V
current	15mA - 25mA
power (max.)	138mW
power handling	25W
cable	RG174
cable length and connector	upon request
housing size	80.5 mm x 74.5 mm x 21.5 mm
operating temp.	-40 °C to +85 °C

specification



2J640B and 2J640BG

mounting	BODY MOUNT
frequency	AMPS 824 - 894 MHz, ISM 868 MHz, GSM 900, DCS 1800 MHz, PCS 1900 MHz, UMTS 2.1 MHz / WIFI/BLUETOOTH 2.4 GHz / GPS 1575.42 MHz / GLONASS 1592 - 1610 MHz
vswr	GSM: <3:1, GNSS: <1.2:1
impedance	50 Ohms
polarization	GSM/WIFI: VERTICAL, GNSS: RHCP
LNA gain	26 dB at 3V, 28 dB at 5V
gain	GSM: 2.2 dBi, WIFI: 2 dBi
voltage supply	2.7V - 5.5V
current	15mA - 25mA
power (max.)	138mW
power handling	25W
cable	RG174
cable length and connector	upon request
housing size	91 mm x 52 mm x 48 mm
operating temp.	-40 °C to +85 °C

specification



2J866B and 2J866BG

2J6516M and 2J6516MG



specification

mounting	MAGNETIC
frequency	TETRA 380 - 500 MHz / WIFI/BLUETOOTH 2.4 GHz / GPS 1575.42 MHz / GLONASS 1592 - 1610 MHz
vswr	<2:1
impedance	50 Ohms
polarization	TETRA: HORIZONTAL, GNSS: RHCP
LNA gain	26 dB at 3V, 28 dB at 5V
gain	TETRA: 6 dBi, WIFI: 2 dBi
voltage supply	2.7V - 5.5V
current	15mA - 25mA
power (max.)	138mW
cable	RG174
cable length and connector	upon request
housing size	80.5 mm x 74.5 mm x 21.5 mm
operating temp.	-40 °C to +85 °C

2J6516B and 2J6516BG



specification

mounting	BODY MOUNT
frequency	TETRA 380 - 500 MHz / WIFI/BLUETOOTH 2.4 GHz / GPS 1575.42 MHz / GLONASS 1592 - 1610 MHz
vswr	<2:1
impedance	50 Ohms
polarization	TETRA: HORIZONTAL, GNSS: RHCP
LNA gain	26 dB at 3V, 28 dB at 5V
gain	TETRA: 6 dBi, WIFI: 2 dBi
voltage supply	2.7V - 5.5V
current	15mA - 25mA
power (max.)	138mW
cable	RG174
cable length and connector	upon request
housing size	80.5 mm x 74.5 mm x 21.5 mm
operating temp.	-40 °C to +85 °C

OTHER ANTENNAS

AM/FM (530Khz - 40 Mhz / 87.5 - 108 Mhz)
DVBT/DAB (440 - 870 Mhz / 150 - 240 Mhz)
ERMES (169 Mhz)
MARINE antennas
YAGI antennas

AM/FM: page 49
DVBT/DAB: page 48
MARINE: page 50
YAGI: page 51
ERMES: page 50

Glossary

*M - magnetic, P - patch, MP - magnetic and patch, B - body mount, F - filter, D - diode, G - Glonass
W - white*



antenna conceptor



2JDVBT01



specification

mounting	ON GLASS
frequency	DAB 150 - 240 MHz / DVBT 440 - 870 MHz
vswr	<2:1
impedance	75 Ohms
polarization	VERTICAL
gain	12 dBi at DAB, 15 dBi at DVBT
voltage supply	5V - 12V
current	25mA at 5V
power (max.)	300mW
cable	RX174
cable length and connector	upon request
housing size	111.5 mm x 59 mm x 5.5 - 11.5 mm
operating temp.	-40 °C to +85 °C

2JDVBT02



specification

mounting	ON GLASS
frequency	DAB 150 - 240 MHz / DVBT 440 - 870 MHz
vswr	<2:1
impedance	75 Ohms
polarization	LINEAR
LNA gain	18 dB +/- 2 dB
gain	12 dB at DAB, 15 dBi at DVBT
voltage supply	3.3V - 18V
current	20mA
LED indicator	green
cable	RG174
cable length and connector	upon request
housing size	140 mm x 26-36 mm x 1.8-5.3 mm
operating temp.	-40 °C to +85 °C

2JD02



specification

mounting	WALL MOUNT
frequency	174 MHz, DAB 150 - 240 MHz
bandwidth	40 MHz +/- -10 MHz
vswr	<2:1
impedance	50 Ohms
polarization	LINEAR
gain (dBi)	2.14 dBi
power handling	50W
cable	RG174
cable length and connector	upon request
housing size	800 mm x 30 mm x 13 mm
operating temp.	-40 °C to +85 °C

other antennas : AM/FM

frequency	FM 87.5 - 108 MHz
gain	-
power (max.)	25W
nominal impedance	50 Ohms
vswr	<2:1
polarization	VERTICAL
size	160 mm x 20.25 mm x 3.75 mm
working temp.	-40 °C to +85 °C

specification



2J0909

mounting	BODY MOUNT
frequency	AM 530kHz - 40 MHz / FM 87.5 - 108 MHz GPS / GLONASS 1592 - 1610 MHz
vswr	GNSS: <2:1
impedance	50 Ohms
polarization	GSM: VERTICAL, GNSS: RHCP
LNA gain	27 dB at 5V
gain	FM: 0 dBi
voltage supply	2.7V - 5.5V
current	15mA - 25mA
power (max.)	138mW
power handling	25W
cable	RG174
cable length and connector	upon request
housing size	434 mm x 195 mm x 60 mm
operating temp.	-40 °C to +85 °C

specification



2J850BG_AVZ

mounting	BODY MOUNT
frequency	AM 530kHz - 40 Mhz / FM 87.5 - 108 MHz / AMPS 824-894 Mhz, GSM 900, DCS 1800 Mhz / BLUETOOTH 2.4Ghz / GPS 1575.42 Mhz
vswr	GSM/WIFI: <2:1, GNSS: <1.2:1
impedance	50 Ohms
polarization	GSM: VERTICAL, GNSS: RHCP
LNA gain	27 dB at 5V
gain	AM/FM: 5 - 10 dBi
voltage supply	12V - 15V (AM/FM), 2.7V - 5.5V (GNSS)
current	15mA - 25mA
power (max.)	138mW
power handling	50W
cable	RG174
cable length and connector	upon request
housing size	430 mm x 98 mm x 58 mm
operating temp.	-40 °C to +85 °C

specification



2J850B

2J9007F and 2J9007GF



specification

mounting	BODY MOUNT
frequency	TETRA 380 - 500 MHz / GPS 1575.42 MHz / GLONASS 1592 - 1610 MHz
vswr	TETRA: <2:1, GNSS: <1.2:1
impedance	50 Ohms
polarization	TETRA: VERTICAL, GNSS: RHCP
LNA gain	27 dB at 5V
gain	2 dBi
voltage supply	2.8V - 5.5V
current	15mA - 25mA
power (max.)	138mW
cable	RG58
cable length and connector	upon request
housing size	252 mm x 110 mm x 74 mm
operating temp.	-40 °C to +85 °C

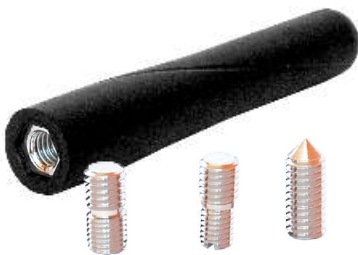
2J9001F and 2J9001GF



specification

mounting	BODY MOUNT
frequency	GPS 1575.42 MHz / GLONASS 1592 - 1610 MHz
vswr	<1.2:1
impedance	50 Ohms
polarization	RHCP
LNA gain	26 dB at 3V, 28 dB at 5V
voltage supply	2.7V - 5.5V
current	15mA - 25mA
power (max.)	138mW
cable	RG58
cable length and connector	upon request
housing size	116 mm x 110 mm x 74 mm
operating temp.	-40 °C to +85 °C

2J0819



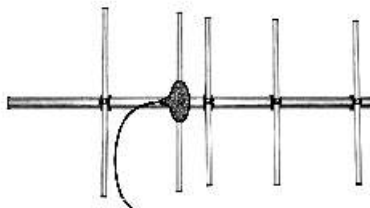
specification

mounting	BODY MOUNT
frequency	ERMES 169 MHz
vswr	<2:1
impedance	50 Ohms
polarization	VERTICAL
gain (dBi)	0 dBi
power handling	25W
connector	MP3, MP4, M5 mating threads
housing size	70.4 mm x 13.2 mm
operating temp.	-40 °C to +85 °C

other antennas : YAGI

application	Base-Station Yagi
frequency	433 - 470 MHz
polarization	HORIZONTAL
impedance	50 Ohms
vswr	<2:1
gain	6 dBi
F/B Ratio	10 dB
beamwidth (H)	50 degrees
beamwidth (E)	50 degrees
power (max.)	150W
boom length	0.997m
operating temp.	-40 °C to +85 °C

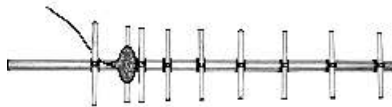
specification



2JYAGI433-5

application	Base-Station Yagi
frequency	433 - 470 MHz
polarization	HORIZONTAL
impedance	50 Ohms
vswr	<2:1
gain	12dBi (approx)
F/B Ratio	18dB
beamwidth (H)	50 degrees
beamwidth (E)	40 degrees
max power	150W
boom length	1.45m
working temp.	-40°C to +85°C

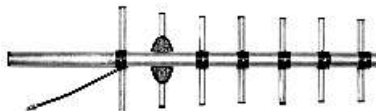
specification



2JYAGI433-8

application	Base-Station Yagi
frequency	900MHz/1800MHz
polarization	HORIZONTAL
impedance	50 Ohms
vswr	<2:1
gain	9 dBi
F/B Ratio	16 dB
beamwidth (H)	65 degrees
beamwidth (V)	50 degrees
max power	150W
boom length	0.75 m
working temp.	-40°C to +85°C

specification



2JYAGI900-6

EMBEDDED ANTENNAS

GSM antennas : page 53 - 57

ISM (868Mhz, 915Mhz)
AMPS (824 - 894 Mhz)
GSM (900 Mhz)
DCS (1800 Mhz)
PCS (1900 Mhz)
3G (2100 Mhz)
4G/LTE (791 - 862 Mhz, 2500 - 2690 Mhz)
WIFI/BLUETOOTH (2.4 - 5.9 Ghz)
TETRA (380 - 500 Mhz)
ISM (433 Mhz)
ERMES (169 Mhz)

GPS antennas : page 58 - 62

GPS (1575.42 Mhz)
Glonass (1592 - 1610 Mhz)
GPS/GLONASS (1572 - 1610 Mhz)

SMT/CERAMIC antennas : page 63 - 65
COMBINED antennas : page 66

A2J

antenna conceptor



embedded antennas : GSM antennas

frequency	AMPS 824 - 894 MHz, GSM 900 MHz, DCS 1800 MHz, PCS 1900 MHz, UMTS 2.1 GHz / WIFI/BLUETOOTH 2.4 GHz, 5 GHz, 5.9 GHz
gain	0 dBi
power (max.)	25W
nominal impedance	50 Ohms
vswr	<2:1
polarization	HORIZONTAL
size	42 mm x 19 mm x 1.69 mm
working temp.	-40 °C to +85 °C

specification



2JMAS01A

frequency	AMPS 824 - 894 MHz, ISM 868 MHz, GSM 900 MHz, DCS 1800 MHz, PCS 1900 MHz UMTS 2.1 GHz / WIFI/BLUETOOTH 2.4 GHz
gain	0 dBi
power (max.)	25W
nominal impedance	50 Ohms
vswr	<2:1
polarization	LINEAR
size	42 mm x 16 mm x 1.6 mm
working temp.	-40 °C to +85 °C

specification



2JMAS01

frequency	GSM 900 MHz, DCS 1800 MHz
gain (dbi)	0 dBi
power (max.)	25W
vswr	<2:1
impedance	50 Ohms
polarization	LINEAR
size	42 mm x 16 mm x 3.3 mm
operating temp.	-40°C to +85°C

specification



2JMAS04

frequency	WIFI/BLUETOOTH 2.4 GHz
gain (dbi)	2.2 dBi
power (max.)	25W
vswr	<1.5:1
impedance	50 Ohms
polarization	LINEAR
size	34 mm x 11.7 mm
operating temp.	-40°C to +85°C

specification



2JMAS05

2JMAS06



specification

frequency	WiFi 5.1 - 5.9 GHz
gain	2.2 dBi
power max	25W
nominal impedance	50 Ohms
vswr	<2:1
polarization	LINEAR
size	34 mm x 11.7 mm x 1.8 mm
operating temp.	-40°C to +85°C

2JDGACT01



specification

frequency	AMPS 824 - 894 MHz, ISM 868 MHz, GSM 900 MHz, DCS 1800 MHz, PCS 1900 MHz, UMTS 2.1 GHz / WIFI/BLUETOOTH 2.4 GHz
gain	0 dBi
power max	25W
nominal impedance	50 Ohms
vswr	<2:1
polarization	HORIZONTAL
size	75 mm x 25 mm x 1.2 mm
operating temp.	-40°C to +85°C

2J500LPCB



specification

frequency	TETRA 380 - 500 MHz, AMPS 824 - 894 MHz, ISM 868 MHz, GSM 900 MHz, DCS 1800 MHz, PCS 1900 MHz, UMTS 2.1 GHz / WIFI/BLUETOOTH 2.4 GHz
gain	2.2 dBi
power max	25W
nominal impedance	50 Ohms
vswr	<2:1
polarization	VERTICAL
size	115.5 mm x 20 mm x 4 mm
operating temp.	-40°C to +85°C

2J550PCB



specification

frequency	AMPS 824 - 894 MHz, ISM 868 MHz, GSM 900 MHz, DCS 1800 MHz, PCS 1900 MHz, UMTS 2.1 GHz / WIFI/BLUETOOTH 2.4 GHz
gain	0 dBi
power max	25W
nominal impedance	50 Ohms
vswr	<2:1
polarization	VERTICAL
size	62 mm x 22 mm x 0.8 mm
operating temp.	-40°C to +85°C

embedded antennas : GSM antennas

frequency	4G/LTE 791 - 862 MHz /2500 - 2690 MHz/ AMPS 824 - 894 MHz, ISM 868 MHz, GSM 900 MHz, DCS 1800 MHz, PCS 1900 MHz UMTS 2.1 GHz / WIFI/BLUETOOTH 2.4 GHz
gain	2.14 dBi
power (max.)	35W
nominal impedance	50 Ohms
vswr	<3:1
polarization	LINEAR
size	105 mm x 52 mm x 4 mm
working temp.	-40 °C to +85 °C

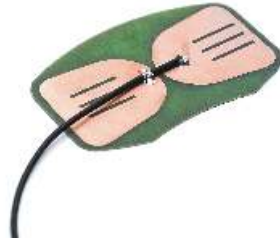
specification



2J540PCB

frequency	AMPS 824 - 894 MHz, GSM 900 MHz, DCS 1800 MHz, PCS 1900 MHz, UMTS 2.1 GHz / WIFI/BLUETOOTH 2.4 GHz
gain	2.14 dBi
power (max.)	35W
nominal impedance	50 Ohms
vswr	<2:1
polarization	LINEAR
size	104.1 mm x 67 mm x 4 mm
working temp.	-40 °C to +85 °C

specification



2J542PCB

frequency	TETRA 380 - 500 MHz
gain (dBi)	2 dBi
power (max.)	35W
vswr	<2:1
impedance	50 Ohms
polarization	LINEAR
size	105 mm x 52 mm x 4 mm
operating temp.	-40°C to +85°C

specification



2J545PCB

frequency	WIFI/BLUETOOTH 2.4 GHz
gain (dBi)	3 dBi
power (max.)	25W
vswr	<1.5:1
impedance	50 Ohms
polarization	VERTICAL
size	72 mm x 25 mm x 0.8 mm
operating temp.	-40°C to +85°C

specification



2J555PCB

2J560PCB



specification

frequency	AMPS 824 - 894 MHz, ISM 868 MHz, GSM 900 MHz, DCS 1800 MHz, PCS 1900 MHz, UMTS 2.1 GHz / WIFI/BLUETOOTH 2.4 GHz, 5.0 GHz
gain	2.2 dBi
power max	35W
nominal impedance	50 Ohms
vswr	<2:1
polarization	VERTICAL
size	105 mm x 20.5 mm x 2.7 mm
operating temp.	-40°C to +85°C

2J562PCB



specification

frequency	AMPS 824 - 894 MHz, ISM 868 MHz, GSM 900 MHz, DCS 1800 MHz, PCS 1900 MHz, UMTS 2.1 GHz / WIFI/BLUETOOTH 2.4 GHz
gain	2 dBi
power max	25W
nominal impedance	50 Ohms
vswr	<2:1
polarization	HORIZONTAL
size	105 mm x 20 mm x 1.2 mm
operating temp.	-40°C to +85°C

2J620PCB



specification

frequency	GSM 900 MHz, DCS 1800 MHz, PCS 1900 MHz, UMTS 2.1 GHz / WIFI/BLUETOOTH 2.4 GHz
gain	2.14 dBi
power max	25W
nominal impedance	50 Ohms
vswr	<2:1
polarization	LINEAR
size	68 mm x 4.6 mm x 1.1 mm
operating temp.	-40°C to +85°C

2J0210PCB



specification

frequency	TETRA 380 - 500 MHz
gain	2.14 dBi
power max	25W
nominal impedance	50 Ohms
vswr	<2:1
polarization	LINEAR
size	228 mm x 10 mm x 0.8 mm
operating temp.	-40°C to +85°C

embedded antennas : GSM antennas

frequency	TETRA 380 - 500 MHz
gain	2.14 dBi
power (max.)	25W
nominal impedance	50 Ohms
vswr	<1.2:1 at center, <2:1 (400-450 MHz), <3.5:1 (380 - 500 MHz)
polarization	LINEAR
size	160 mm x 20.25 mm x 3.75 mm
working temp.	-40 °C to +85 °C

specification



2J0310PCB

frequency	AMPS 824 - 894 MHz, ISM 868 MHz, GSM 900 MHz, DCS 1800 MHz, PCS 1900 MHz
gain	ISM: 2.14 dBi, GSM: 0 dBi
power (max.)	25W
nominal impedance	50 Ohms
vswr	<2:1
polarization	LINEAR
size	100 mm x 28 mm x 0.8 mm
working temp.	-40 °C to +85 °C

specification



2JRS01

frequency	AMPS 824 - 894 MHz, ISM 868 MHz, GSM 900 MHz, DCS 1800 MHz, PCS 1900 MHz, UMTS 2.1 GHz / WIFI/BLUETOOTH 2.4 Ghz
gain (dbi)	2.14 dBi
power (max.)	25W
vswr	<2:1
impedance	50 Ohms
polarization	HORIZONTAL
note	10k resistor on antennae
size	11-15 mm x 123 mm x 5 mm
operating temp.	-40°C to +85°C

specification



2J510RPCB Diagnostic

frequency	AMPS 824 - 894 MHz, ISM 868 MHz, GSM 900 MHz, DCS 1800 MHz, PCS 1900 MHz, UMTS 2.1 GHz / WIFI/BLUETOOTH 2.4 Ghz, 5.0 Ghz
gain (dbi)	2.2 dBi
power (max.)	35W
vswr	<2:1
impedance	50 Ohms
polarization	VERTICAL
note	10k resistor on antennae
size	105 mm x 20.5 mm x 2.7 mm
operating temp.	-40°C to +85°C

specification



2J560RPCB Diagnostic

2J401G/GD/GF/GFD



specification

frequency	GPS 1575.42 MHz, GLONASS 1592 - 1610 MHz
LAN gain	23-25 dB at 3V, 24-26 dB at 5V
voltage supply	2.7V - 5.5V
current	15mA - 25mA
power max	138mW
nominal impedance	50 Ohms
noise figure	1.15 dBi
polarization	RHCP
size	25.2 mm x 25.2 mm x 7.5 mm
size of ceramic patch	25 mm x 25 mm x 4 mm
filter	SAN/DIONE

2J402



specification

frequency	GPS 1575.42 MHz
LAN gain	26 dB at 3V, 28 dB at 5V
voltage supply	2.7V - 5.5V
current	15mA - 25mA
power max	138mW
nominal impedance	50 Ohms
noise figure	1.15 dBi
polarization	RHCP
size	25.4 mm x 25.4 mm x 7.9 mm
size of ceramic patch	25 mm x 25 mm x 4 mm
filter	NO

2J402FS



specification

frequency	GPS 1575.42 MHz
LAN gain	26 dB at 3V, 28 dB at 5V
voltage supply	2.7V - 5.5V
current	15mA - 25mA
power max	138mW
nominal impedance	50 Ohms
noise figure	1.15 dBi
polarization	RHCP
size	26 mm x 26 mm x 8.3 mm
size of ceramic patch	25 mm x 25 mm x 4 mm
filter	SAW/NO

2J403



specification

frequency	GPS 1575.42 MHz
LAN gain	27 dB
voltage supply	2.7V - 5.5V
current	20mA
power max	138mW
nominal impedance	50 Ohms
noise figure	1.15 dBi
polarization	RHCP
size	38 mm x 26 mm x 5.9 mm
size of ceramic patch	25 mm x 25 mm x 4 mm
filter	NO

embedded antennas : GPS antennas

frequency	GPS 1575.42 MHz
LAN gain	18 dB
voltage supply	2.7V - 5.5V
current	15mA - 25mA
power max	138mW
nominal impedance	50 Ohms
noise figure	1.15 dBi
polarization	RHCP
size	25.7 mm x 25.7 mm x 8.3 mm
size of ceramic patch	25 mm x 25 mm x 4 mm
filter	NO

specification



2J405

frequency	GPS 1575.42 MHz, GLONASS 1592 - 1610 MHz
LAN gain	15 dB
voltage supply	2.7V - 5.5V
current	15mA - 25mA
power max	138mW
nominal impedance	50 Ohms
noise figure	1.15 dBi
polarization	RHCP
size	25.2 mm x 25.2 mm x 7.9 mm
size of ceramic patch	25 mm x 25 mm x 4 mm
filter	NO

specification



2J405F

frequency	GPS 1575.42 MHz, GLONASS 1592 - 1610 MHz
LAN gain	12 dB
voltage supply	2.7V - 5.5V
current	15mA - 25mA
power max	138mW
nominal impedance	50 Ohms
noise figure	1.15 dBi
polarization	RHCP
size	25.7 mm x 25.7 mm x 8.3 mm
size of ceramic patch	25 mm x 25 mm x 4 mm
filter	NO

specification



2J407

frequency	GPS 1575.42 MHz, GLONASS 1592 - 1610 MHz
LAN gain	9 dB
voltage supply	2.7V - 5.5V
current	15mA - 25mA
power max	138mW
nominal impedance	50 Ohms
noise figure	1.15 dBi
polarization	RHCP
size	25.2 mm x 25.2 mm x 7.9 mm
size of ceramic patch	25 mm x 25 mm x 4 mm
filter	SAW/NO

specification



2J407F

2J408



specification

frequency	GPS 1575.42 MHz
LAN gain	26 dB at 3V, 28 dB at 5V
voltage supply	2.7V - 5.5V
current	15mA - 25mA
power max	138mW
nominal impedance	50 Ohms
noise figure	1.15 dBi
polarization	RHCP
size	35 mm x 35 mm x 8.3 mm
size of ceramic patch	25 mm x 25 mm x 4 mm
filter	NO

2J408-LP



specification

frequency	GPS 1575.42 MHz, GLONASS 1592 - 1610 MHz
LAN gain	25 dB at 3V, 27 dB at 5V
voltage supply	2.7V - 5.5V
current	15mA - 25mA
power max	138mW
nominal impedance	50 Ohms
noise figure	1.15 dBi
polarization	RHCP
size	35 mm x 35 mm x 6.35 mm
size of ceramic patch	25 mm x 25 mm x 2 mm
filter	NO

2J408F-LP



specification

frequency	GPS 1575.42 MHz
LAN gain	23 dB at 3V, 24 dB at 5V
voltage supply	2.7V - 5.5V
current	15mA - 25mA
power max	138mW
nominal impedance	50 Ohms
noise figure	1.15 dBi
polarization	RHCP
size	35 mm x 35 mm x 6.3 mm
size of ceramic patch	25 mm x 25 mm x 2 mm
filter	SAW/NO

2J409



specification

frequency	GPS 1575.42 MHz, GLONASS 1592 - 1610 MHz
LAN gain	3-5 dBiC
voltage supply	-
current	-
power max	-
nominal impedance	50 Ohms
noise figure	-
polarization	RHCP
size	25.2 mm x 25.2 mm x 7.5 mm
size of ceramic patch	25 mm x 25 mm x 4 mm
filter	NO

embedded antennas : GPS antennas

frequency	GPS 1575.42 MHz
LAN gain	26 dB at 3V, 28 dB at 5V
voltage supply	2.7V - 5.5V
current	15mA - 25mA
power max	138mW
nominal impedance	50 Ohms
noise figure	1.15 dBi
polarization	RHCP
size	14 mm x 14 mm x 8.7 mm
size of ceramic patch	13 mm x 13 mm x 4 mm
filter	NO

specification



2JM34

frequency	GPS 1575.42 MHz
LAN gain	18 dB
voltage supply	2.7V - 3.3V
current	4.5mA
power max	15mW
nominal impedance	50 Ohms
noise figure	1.3 dBi
polarization	RHCP
size	14 mm x 14 mm x 8.7 mm
size of ceramic patch	13 mm x 13 mm x 4 mm
filter	NO

specification



2JM010

frequency	GPS 1575.42 MHz
LAN gain	18 dB
voltage supply	2.7V - 3.3V
current	4.5mA
power max	15mW
nominal impedance	50 Ohms
noise figure	1.3 dBi
polarization	RHCP
size	14 mm x 14 mm x 8.7 mm
size of ceramic patch	13 mm x 13 mm x 4 mm
filter	NO

specification



2JM011

frequency	GPS 1575.42 MHz
LAN gain	26 dB at 3V, 28 dB at 5V
voltage supply	2.7V - 5.5V
current	15mA - 25mA
power max	138mW
nominal impedance	50 Ohms
noise figure	1.15 dBi
polarization	RHCP
size	20.5 mm x 16.4 mm x 8.3 mm
size of ceramic patch	13 mm x 13 mm x 4 mm
filter	NO

specification



2JM012

2JM030



specification

frequency	GPS 1575.42 MHz
LAN gain	27 dB
voltage supply	2.7V - 5.5V
current	15mA - 25mA
power max	138mW
nominal impedance	50 Ohms
noise figure	1.15 dBi
polarization	RHCP
size	18.3 mm x 18.3 mm x 9.3 mm
size of ceramic patch	25 mm x 25 mm x 4 mm
filter	NO

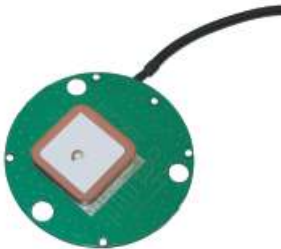
2JM040



specification

frequency	GPS 1575.42 MHz
LAN gain	18 dB
voltage supply	2.7V - 3.3V
current	9mA at 3V
power max	30mW at 3V
nominal impedance	50 Ohms
noise figure	2 dBi
polarization	RHCP
size	13.1 mm x 13.1 mm x 12 mm
size of ceramic patch	13 mm x 13 mm x 4 mm
filter	NO

2JGPRS01



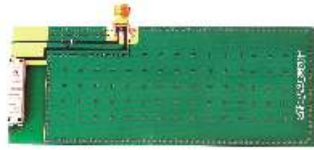
specification

frequency	GPS 1575.42 MHz
LAN gain	3-5 dBiC
voltage supply	2.7V - 5.5V
current	60mA
power max	150mW
nominal impedance	50 Ohms
noise figure	-
polarization	RHCP
size	60 mm x 8.3 mm
size of ceramic patch	25 mm x 25 mm x 4 mm
filter	UART/USB

embedded antennas : SMT and ceramic patch

frequency	AMPS 824 - 894 MHz, GSM 900 MHz, DCS 1800 MHz, PCS 1900 MHz, UMTS 2.1 GHz AMPS: 1.3 dBi, GSM: 2.4 dBi, DCS: 6.4 dBi, PCS:
gain	5.9 dBi, UMTS: 4.8 dBi
power max	-
nominal impedance	50 Ohms
vswr	<3.0:1
polarization	LINEAR
size	24 mm x 5.5 mm x 4.4 mm
working temp.	-40 °C to +85 °C

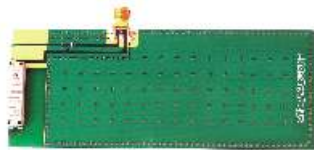
specification



2JE03

frequency	AMPS 824 - 894 MHz, GSM 900 MHz, DCS 1800 MHz, PCS 1900 MHz, UMTS 2.1 GHz AMPS: 0.7 dBi, GSM: 0.7 dBi, DCS: 5.7 dBi, PCS:
gain	4.8 dBi, UMTS: 4.6 dBi
power max	-
nominal impedance	50 Ohms
vswr	<3.0:1
polarization	LINEAR
size	24 mm x 5.5 mm x 4.4 mm
working temp.	-40 °C to +85 °C

specification



2JE04

frequency	ISM 434 MHz, ISM 868 MHz, ISM 915 MHz
gain	-8 at 434 MHz, -7 at 868 MHz, -4 at 915 MHz
power max	-
nominal impedance	50 Ohms
vswr	<3.0:1
polarization	LINEAR
size	24 mm x 5.5 mm x 4.4 mm
working temp.	-40 °C to +85 °C

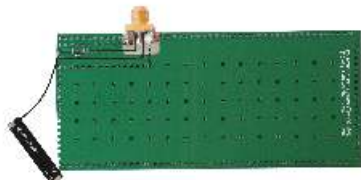
specification



2JE05

frequency	ERMES 169 MHz
gain	-17.6 dBi
power max	-
nominal impedance	50 Ohms
vswr	<2:1
polarization	LINEAR
size	25 mm x 5 mm x 0.8 mm
working temp.	-40 °C to +85 °C

specification



2JE06

2JCP2544G



B25-JA3

specification

frequency	GPS/GLONASS 1592 - 1610 MHz
LAN gain	4 dBiC
vswr	<1.5:1
nominal impedance	50 Ohms
polarization	RHCP
Axial ratio dB max.	5.0
Frequency temperature	-
coefficient	20ppm/deg.C max.
size	25 mm x 25 mm x 4 mm

2JCP2544



B25-JA3

specification

frequency	GPS 1575.42 MHz
LAN gain	4 dBiC
vswr	<1.5:1
nominal impedance	50 Ohms
polarization	RHCP
Axial ratio dB max.	5.0
Frequency temperature	-
coefficient	20ppm/deg.C max.
size	25 mm x 25 mm x 4 mm

2JCP2543G



B25-JA3

specification

frequency	GPS/GLONASS 1592 - 1610 MHz
LAN gain	3 dBiC
vswr	<1.5:1
nominal impedance	50 Ohms
polarization	RHCP
Axial ratio dB max.	3.0
Frequency temperature	-
coefficient	20ppm/deg.C max.
size	25 mm x 25 mm x 4 mm

2JCP2543



B25-JA3

specification

frequency	GPS 1575.42 MHz
LAN gain	2 dBiC
vswr	<1.5:1
nominal impedance	50 Ohms
polarization	RHCP
Axial ratio dB max.	4.0
Frequency temperature	-
coefficient	20ppm/deg.C max.
size	25 mm x 25 mm x 4 mm

embedded antennas : SMT and ceramic patch

frequency	GPS 1575.42 MHz
LAN gain	0 dBiC
vswr	<1.5:1
nominal impedance	50 Ohms
polarization	RHCP
Axial ratio dB max.	4.0
Frequency	-
temperature	-
coefficient	20ppm/deg.C max.
size	13 mm x 13 mm x 4 mm

specification



2JCP1341

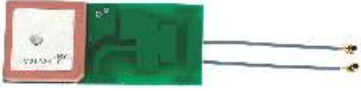
frequency	GPS 1575.42 MHz
LAN gain	0 dBiC
vswr	<1.5:1
nominal impedance	50 Ohms
polarization	RHCP
Axial ratio dB max.	4.0
Frequency	-
temperature	-
coefficient	20ppm/deg.C max.
size	35 mm x 35 mm x 3 mm

specification



2JCP3531

2J425PCB



specification

frequency	AMPS 824 - 894 MHz, GSM 900 MHz, DCS 1800 MHz, PCS 1.9 GHz / UMTS 2.1 GHz / GPS 1575.42 MHz /GLONASS 1592 - 1610 MHz
gain	27 dB
voltage supply	2.8V - 5.5V
current	15mA - 25mA
power max	138mW
nominal impedance	50 Ohms
noise figure	1.15 dB
polarization	GSM: HORIZONTAL, GNSS: RHCP
size	62 mm x 26 mm x 1.6 mm
size of ceramic patch	25 mm x 25 mm x 4 mm
filter	NO

2J426PCB



specification

frequency	AMPS 824 - 894 MHz, GSM 900 MHz, DCS 1800 MHz, PCS 1.9 GHz, UMTS 2.1 GHz, BLUETOOTH 2.4 GHz, 1575.42 MHz /GLONASS 1592 - 1610 MHz
gain	27 dB
voltage supply	2.8V - 5.5V
current	15mA - 25mA
power max	138mW
nominal impedance	50 Ohms
noise figure	1.15 dB
polarization	GSM/WIFI: HORIZONTAL, GNSS: RHCP
size	62 mm x 26 mm x 1.6 mm
size of ceramic patch	25 mm x 25 mm x 4 mm
filter	NO

CONNECTORS AND CABLE LEADS

PAGE : 67 - 68

2J is offering different types of cables and connectors to create ideal cable lead.

2J

antenna conceptor



specification



side A	McCard male R/A for RG174
side B	MMCX male straight for RG174
cable	RG174

alternatives available on request

specification



side A	BNC male R/A for RG316
side B	MHC 331 for RG316
cable	RG316

alternatives available on request

specification



side A	Fakra C type Bordeaux male for RG174
side B	Fakra C type Bordeaux female for RG174
cable	RG174

alternatives available on request

specification



side A	SMA male straight for RG174
side B	CRC9001 for RG174
cable	RG174

alternatives available on request

connectors and cable leads

side A SMA female Bulkhead

side B GSC

cable Microcoax. 1.13 mm

alternatives available on request

specification



side A FME female for RG58

side B FME male for RG58

cable RG58

alternatives available on request

specification



side A SMA female Bulkhead

side B UFL

cable Microcoax. 1.13 mm

alternatives available on request

specification



side A N male straight

side B TNC male straight

cable RG58

alternatives available on request

specification



