

## LEMO HEADQUARTERS

### SWITZERLAND

LEMO SA  
Chemin des Champs-Courbes 28 - P.O. Box 194 - CH-1024 Ecublens  
Tel. (+41 21) 695 16 00 - Fax (+41 21) 695 16 01 - e-mail: info@lemo.com

## LEMO SUBSIDIARIES

### AUSTRIA LEMO Elektronik GesmbH

Lemböckgasse 49/E6-3  
1230 Wien  
Tel: (+43 1) 914 23 20 0  
Fax: (+43 1) 914 23 20 11  
sales@lemo.at

### CHINA

LEMO Trading (Shanghai) Co., Ltd  
LEMO Electronics (Shanghai) Co., Ltd  
5th Floor, Block 6, City of ELITE,  
1000 Jinhai Road, Pudong  
Shanghai, China 201206  
Tel: (+86 21) 5899 7721  
Fax: (+86 21) 5899 7727  
cn.sales@lemo.com

### DENMARK LEMO Denmark A/S

Gammel Mosevej 46  
2820 Gentofte  
Tel: (+45) 45 20 44 00  
Fax: (+45) 45 20 44 01  
info-dk@lemo.com

### FRANCE LEMO France Sàrl

15/19 Avenue Graham Bell  
Bâtiment Balthus 4  
Bussy Saint Georges  
77607 Marne la Vallée Cedex 3  
Tel: (+33 1) 60 94 60 94  
Fax: (+33 1) 60 94 60 90  
info-fr@lemo.com

### GERMANY LEMO Elektronik GmbH

Hanns-Schwindt-Str. 6  
81829 München  
Tel: (+49 89) 42 77 03  
Fax: (+49 89) 420 21 92  
info@lemo.de

### HONG KONG LEMO Hong Kong Ltd

Room 33, 7th Floor  
HITEC, 1 Trademart Drive  
Kowloon Bay - Hong Kong  
Tel: (+852) 2174 0468  
Fax: (+852) 2174 0492  
hk.sales@lemo.com

### HUNGARY REDEL Elektronika Kft

Vágóhid u. 26  
1201 Budapest XX.  
Tel: (+36 1) 421 47 10  
Fax: (+36 1) 421 47 57  
info-hu@lemo.com

### ITALY

LEMO Italia srl  
Viale Lunigiana 25  
20125 Milano  
Tel: (+39 02) 66 71 10 46  
Fax: (+39 02) 66 71 10 66  
sales.it@lemo.com

### LEMO USA, Inc.

635 Park Ct., Rohnert Park, CA 94927-2408 USA  
800-444-5366  
email: info@lemousa.com

www.lemo.com

### JAPAN LEMO Japan Ltd

4-10-3, Takaido Higashi,  
Suginami-ku, Tokyo, 168-0072  
Tel: (+81 3) 53 44 39 33  
Fax: (+81 3) 53 44 39 35  
lemoinfo@lemo.co.jp

### NETHERLANDS / BELGIUM

LEMO Connectors Benelux  
De Trompet 2108  
1967 DC Heemskerck  
Tel: (+31) 251 25 78 20  
Fax: (+31) 251 25 78 21  
info@lemo.nl

### NORWAY / ICELAND

LEMO Norway A/S  
Stanseveien 6B  
0975 Oslo  
Tel: (+47) 22 91 70 40  
Fax: (+47) 22 91 70 41  
info-no@lemo.com

### SPAIN / PORTUGAL

IBERLEMO S.A.  
Brasil, 45, 08402 Granollers  
Barcelona  
Tel: (+34 93) 860 44 20  
Fax: (+34 93) 879 10 77  
info-es@lemo.com

Madrid Office  
Antonio López, 96, 28019 Madrid  
Tel: (+34 91) 469 99 19  
Fax: (+34 91) 469 99 59

### SWEDEN / FINLAND

LEMO Nordic AB  
Mariehällsvägen 39A  
168 65 Bromma  
Tel: (+46 8) 635 60 60  
Fax: (+46 8) 635 60 61  
info-se@lemo.com

### SWITZERLAND

LEMO Verkauf AG  
Grundstrasse 22 B  
6343 Rotkreuz  
Tel: (+41 41) 790 49 40  
Fax: (+41 41) 790 49 43  
ch.sales@lemo.com

### UNITED KINGDOM

LEMO UK Ltd  
Unit 15 & 16  
Hazelwood Trading Estate  
Worthing, West Sussex,  
BN14 8NP  
Tel: (+44 1903) 23 45 43  
Fax: (+44 1903) 20 62 31  
lemouk@lemo.com

DATA.FST.LUS.P0410



**For more information on the Fusion Splicer,  
Contact:**

#### **3SAE Technologies, Inc.**

318 Seaboard Lane, Suite 212, Franklin, TN 37067  
Tel: 615-778-8812 Fax: 615-778-8816  
Email: Sales@3sae.com  
www.3sae.com

**For more information about LEMO Connectors,  
Contact:**

#### **LEMO USA, Inc.**

1-800-444-5366  
Email: broadcast-info@lemo.com  
www.lemo.com

**Demos, Certification, Installation Services and  
On-Site Training are also available!**

## FIBER OPTIC CONNECTION SYSTEM WITH FUSION SPLICING TECHNOLOGY



## Exclusive Fusion Splicing Technology for LEMO's Fiber Optic HDTV Connectors and Cables

LEMO has partnered with 3SAE Technologies, Inc., offering an exclusive breakthrough technology allowing for both factory and on-site termination by replacing the fiber optic connector polish process with a spliced fiber contact connector. This process removes the need for the fiber epoxy and polish process, allowing for a quicker and simpler termination process for build-to-order, installation, or field repair applications.

Fusion splice equipment has been used in field fiber applications for years and is now available to benefit the broadcast industry. This proven technology greatly reduces the time and the level of expertise required for terminating the LEMO fiber optic hybrid

connectors. This termination process makes it much easier to attach or repair SMPTE connectors in the field due to the simplicity, portability, and reliability of fusion splicing.



3SAE S153A-HD



Spliced fiber connections, protected by LEMO's 3K.93C connector shells, have negligible insertion loss, and are not affected by temperature extremes. Fusion splices combine the best of pre-terminated contacts and continuous fiber connectors.

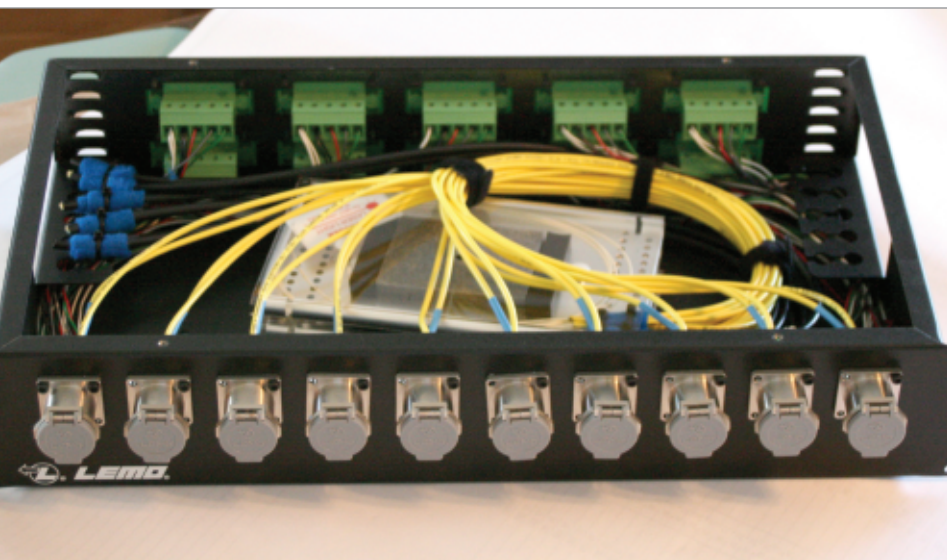
#### Features and Applications:

- On-site fusion splicing eliminates the difficulty of polishing. The pre-polished fiber contacts are tested and inspected to ensure 100% compliance. Now every fiber termination has LEMO factory quality.
- Repair damaged LEMO fiber optic cables on site, eliminating costly down time and shipping charges.
- Use this system to splice other standard 125um fibers with 250um and 900um coatings.
- Use splicing technology with cables, patch panels and bulkhead mounted connectors.
- Pull cable through conduit to required lengths and terminate on-site rather than pre-ordering complete cable assemblies with estimated lengths. This eliminates waste and the potential for damaged connectors.

Characteristic	Value
Splicing Method	Clad-Alignment
Fiber Type	SM (ITU-T G.651), MM (ITU-T G.651), DSF (ITU-T G.653), NZD (ITU-TG.655) BIFUBIF (Bend Insensitive fiber, ITU-T G.657)
Cladding Diameter	80um – 150um
Coating Diameter	160um – 900um
Average Loss	SMF: 0.04dB, MMF 0.02dB, DSF 0.06Db, NZD: 0.06dB
Splice Time	9 seconds (semi-auto mode) 11 seconds (regular mode)
Heat Time	25-second(semi-auto mode) 31 seconds (regular mode)
Applicable Sleeves	20mm, 40mm, 60mm
Cleave Length	5~16mm
Magnification	Up to 76X, 235X
Image Capture Capacity	Last 100 images automatically captured. + Up to 24 images to be stored permanently
Dimensions	159W X 231D X 130H mm
Power AC Input	100 to 240 VAC (50/60Hz)
DC Input	11 to 17VDC, Battery: Li-ion
Battery	Internal Battery – Typical 80 splice/heat cycles with single battery Typical 200 splice/heat cycles with dual batteries
Splice Memory	2000 splices
Data Output	USB ver.2.0 mini
Operating Environment	0-5000m, -10 to +50C and 90% at 38C



Rack Mount Splice Box



#### LEMO Connector Specifications

##### Optical

Characteristic	Value
Insertion loss, at 1300 nm	< 0.5 dBm
Return loss, at 1300 nm	≥ 45dBm
Fiber core/cladding Dia.	9/125 μm

##### Electrical

Characteristic	Value
Max Working Voltage – High Voltage Pins	> 600 Vrms
Low Voltage Pins	> 60 Vrms
Max Current, continuous High V. Pins	10 Amp
Low V. Pins	3 Amp
Shell to Shell Resistance	< 2mOhm

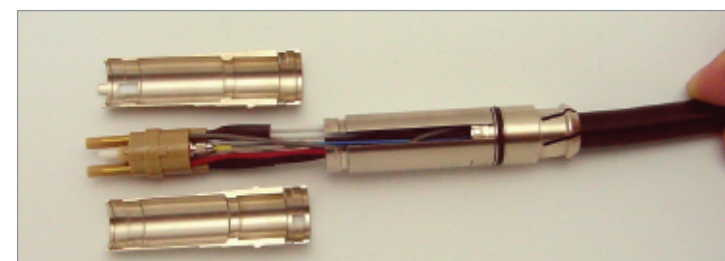
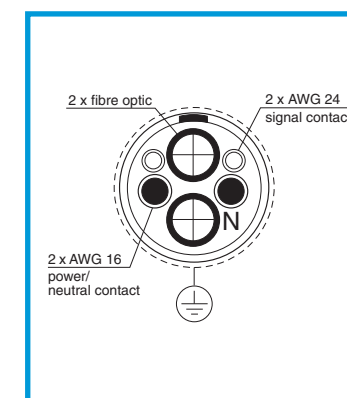
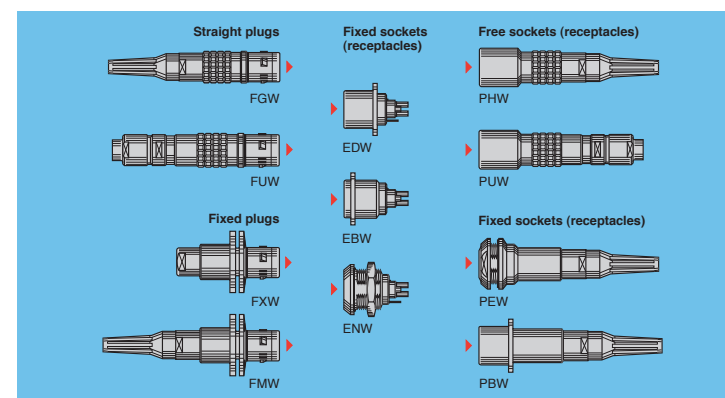
##### Environmental / Mechanical

Characteristic	Value
Durability	
Stainless Steel Shell	> 10,000 cycles
Temperature	-40° C to +80° C
Humidity	
40° C for 96 hours	90-95%
Water Protection	IP 68: 1.8m, for 48 Hr.
Drop onto Concrete floor	2 m
Shock 10-5m mSec	100 g
6-9 mSec	20 g
Cable Retention	1000N

Specs subject to change



#### SMPTE Shell Choices



Extended midpiece for Fusion Splice Process

LEMO Part Number	Description
FUW.3K.93C.TLMC96	Straight Plug
PUW.3K.93C.TLCC96	Straight Receptacle
PBW.3K.93C.TLCC96Z	Panel Mount Receptacle
FMW.3K.93C.TLMC96Z	Panel Mount Plug
PEW.3K.93C.TLCC96Z	Panel Mount Receptacle
3K.93C.U0729	Extended midpiece for Fusion Splice Process
RSS.F2.BAZ.U0729	2x pre-terminated F2 contacts and clear sleeves
BRR.3K.200.PZSG	Spring loaded dust cap
BRF.3K.200.U0743A	SS cap - Plug w/ lanyards
BFW.3K.100.U0708A	SS cap - Receptacle w/ lanyards
WST.EL.93C.Plug	Repair Kit (Elec. parts for 3K.93C Plugs)
WST.EL.93C.RCPT	Repair Kit (Elec. parts for 3K.93C Receptacles)
U0638A	Rack Mount Splice Box
GMP.3K.085.U0729	Full Body Boot – Receptacle – PUW
GMF.3K.085.U0729	Full Body Boot – Plug – FUW

Part numbers subject to change

