

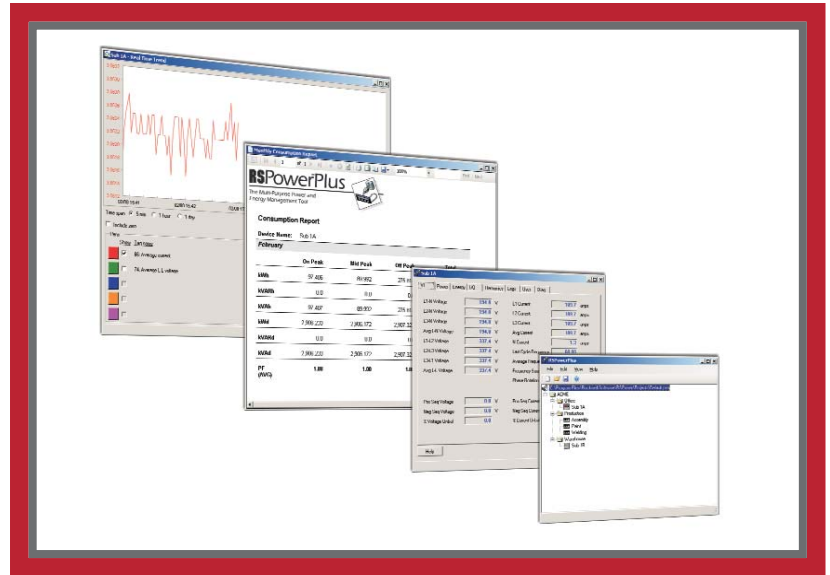
# TECHNICAL DATA

## RSPower and RSPower Plus

Put Power Monitor Data at your Fingertips

### Benefits:

- Remotely organize and configure your Powermonitors
- Store configuration in one place
- View real-time Powermonitor data
- View log and historical data remotely
- View harmonic, transient, sag/swell, and waveform data
- OPC server



Solve your power monitoring and energy management problems using Rockwell Automation power monitoring hardware teamed with RSPower™ software from Rockwell Software®.

RSPower is a .NET/Windows® -based software program that configures and displays data from all Rockwell Automation power monitors. RSPower is a complete tool that allows you to save power monitor data to disk, print data, harmonics and waveforms, and manage your power monitor configurations.

Install RSPower as a stand-alone package or as an extension of RSVIEW32™ HMI software and begin working with your power monitoring equipment from your desktop.

## RSPower and RSPowerPlus Key Features

### Quick and easy configuration, monitoring and integration of power information

- Organize your Allen-Bradley® Powermonitors into a graphical tree to represent your specific configuration or view the power monitors in a sorted list
- Upload and download your Powermonitor configuration parameters from your PC
- Save your entire site configuration as well as the individual data from each monitor
- Continuous access to all power data from your PC
- Display your data in pop-up views of real-time data
- Display historical data stored within the power monitor
- RSPower contains an OPC server to simultaneously provide power monitor data to many external software packages
- Flexible communications via RSLinx® to communicate with Powermonitors

## RSPowerPlus Key Features

### Pre-configured Billing and Consumption Reports

- Run pre-configured monthly or yearly electrical consumption reports for each individual Powermonitor utilizing the TOU function in the Powermonitor 1000 and 3000 family of products
- Run pre-configured monthly or yearly billing reports by manually entering consumption and demand rates utilizing the TOU function in the Powermonitor 1000 and 3000 family of products

### Pre-Configured real-time and historical Trending Tools

- Display real-time trending for up to 5 parameters simultaneously
- Display historical trending for data directly from the trend log of each meter
- User defined limits for monitoring of electrical parameters (i.e. demand monitoring)

## Advanced presentation of data including Power Quality parameters

- Pop-up windows are available to view, print, and save harmonic spectral data, waveforms, event logs, min/max logs, and snapshot logs
- Displays the harmonic content of your electric signal on your PC screen in both spreadsheet and bar graph formats
- Check power line condition before, during, or after a disturbance

## RSPowerPlus Benefits

- Real-time monitoring of electrical parameters
- Generate consumption and demand reports for a plant, department or process
- Provides billing reports, based on real energy consumption and demand, for a plant, department or process
- Trending of real-time and historical electrical parameters
- Track power quality problems and pinpoint causes of disturbances that could yield big paybacks

## System Hardware requirements

- Pentium 4 or P4 - compatible microprocessor
- 256 MB of RAM
- 100 MB of available hard disk space
- CD-ROM/DVD-ROM drive
- 3.5-inch, 1.44 MB disk drive
- Windows 2000, Windows 2000 Server, Windows XP, or Windows Server 2003
- Microsoft .NET Framework 2.0
- Adobe Acrobat Reader
- RSLinx Classic 2.51

## RSPower Hardware Requirements

- Rockwell Bulletin 1400 Powermonitor, 1403 Powermonitor II, 1404 Powermonitor 3000, 1408 Powermonitor 1000
- Appropriate communications interface to the Powermonitor
- Ethernet, ControlNet™, DeviceNet™ or Remote I/O connection between Powermonitor and PC\*

### RSPower

Catalog Number	Description
9307-RSP32LXWENE	RSPower Works Bundled with Communication Drivers
9307-RSP32LXRENE	RSPower Runtime Bundled with Communication Drivers
9307-RSP32WENE	RSPower Works without Communication Drivers
9307-RSP32RENE	RSPower Runtime without Communication Drivers

### RSPowerPlus

Catalog Number	Description
9307-RSPPLXWENE	RSPowerPlus Works Bundled with Communication Drivers
9307-RSPPLXRENE	RSPowerPlus Runtime Bundled with Communication Drivers
9307-RSPPWENE	RSPowerPlus Works without Communication Drivers
9307-RSPPRENE	RSPowerPlus Runtime without Communication Drivers

### RSPower to RSPowerPlus Upgrade

Catalog Number	Description
9307-RSPPWU1	RSPower Works to RSPowerPlus Works upgrade
9307-RSPPRU1	RSPower Runtime to RSPowerPlus Runtime upgrade

## ALSO FROM ROCKWELL SOFTWARE

**RSEnergyMetrix™** – a Web server-based HMI for profiling energy loads, allocating energy costs, and verifying utility bills.

**RSView32** – a complete HMI for monitoring and controlling your automation machines and processes.

**RSLinx** – a comprehensive communications driver suite for all Allen-Bradley networks.

Allen-Bradley, Rockwell Software, RSEnergyMetrix, RSLinx, RSPower and RSView32 are trademarks of Rockwell Automation.

Trademarks not belonging to Rockwell Automation are property of their respective companies.

[www.rockwellautomation.com](http://www.rockwellautomation.com)

### Power, Control and Information Solutions Headquarters

Americas: Rockwell Automation, 1201 South Second Street, Milwaukee, WI 53204-2496 USA, Tel: (1) 414.382.2000, Fax: (1) 414.382.4444

Europe/Middle East/Africa: Rockwell Automation, Vorstlaan/Boulevard du Souverain 36, 1170 Brussels, Belgium, Tel: (32) 2 663 0600, Fax: (32) 2 663 0640

Asia Pacific: Rockwell Automation, Level 14, Core F, Cyberport 3, 100 Cyberport Road, Hong Kong, Tel: (852) 2887 4788, Fax: (852) 2508 1846