

### Installing ABACUS ELECTRICS USB Optical Probes under Windows CE

AN13c

This installation guide describes the installation of beta version Windows CE .NET drivers for ABACUS ELECTRICS USB Optical Probes. The latest drivers and information can be found at <http://www.abacuselectrics.com/usbsoftce.htm>.

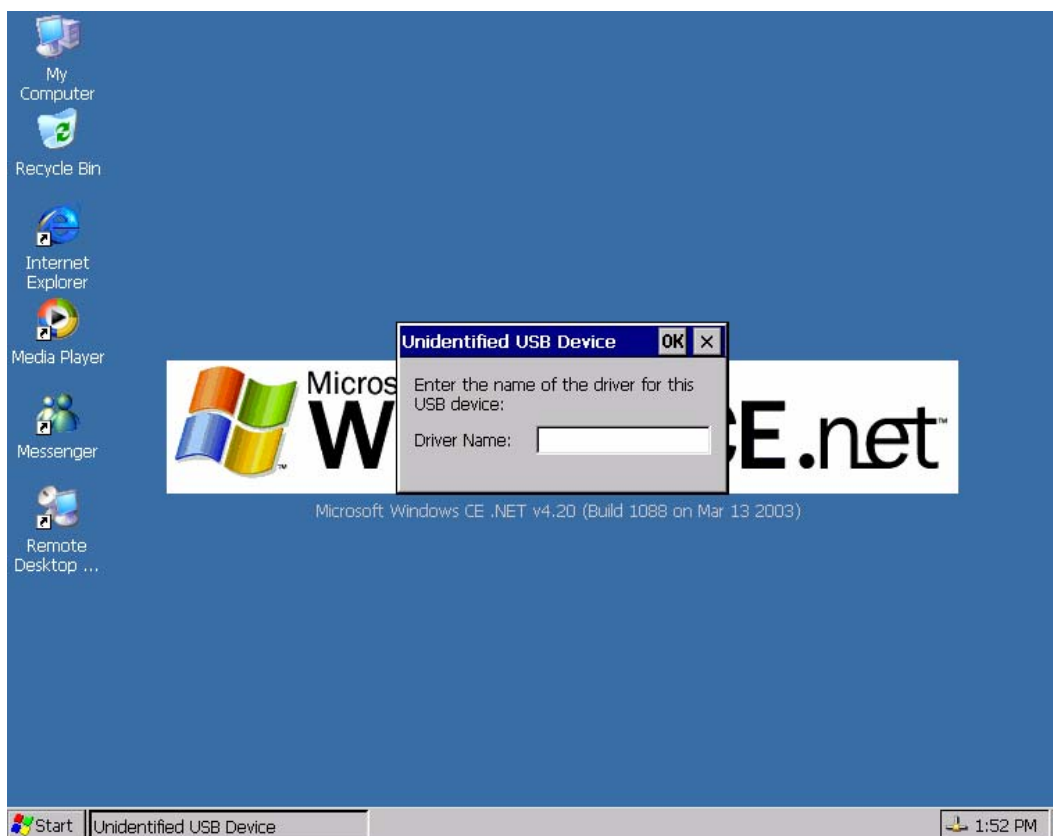
If you have problems with installing your probe please e-mail us at [pplunkett@cix.co.uk](mailto:pplunkett@cix.co.uk) and describe the stage you have reached.

Windows CE .NET is a Microsoft development environment for the embedded market. Currently version 5.0 is used although versions 2.11, 3.0, 4.0, 4.1 and 4.2 exist. These drivers require CE .NET version 4.2 - 5.0.

Windows CE runs on portable/hand-held systems that may use various brands/models of microprocessor so the Windows CE development environment allows operating system images to be created for a range of processors. Currently drivers are available for the ARM/XScale (ARMv4) processor and x86 processor.

Select the appropriate drivers (available in zip archive files) for the target processor.

Extract the ftdi\_ser.dll driver file and also the FTDIPOINT.INF installation file and copy to the Windows directory on the Windows CE computer.



Plug in the USB Optical Probe.

This should bring up the "Unidentified USB Device" window.

At the prompt enter the driver name in full - "ftdi\_ser.dll".

The optical probe should now function correctly and appear as a 'virtual' serial port to Windows.