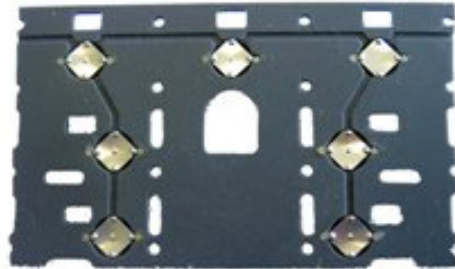


Silicone Keypad With Short Stroke

**A
TOUCH
BETTER**



Metal dome is directly integrated into silicone base



Metal dome array on keypad

Short Description

Unique feel generated through combination of technologies

- Metal domes are directly integrated into keypad
- Unique feel generated through combination of technologies

Advantages

- Low cost keypad technology
- Special tactile feel (long stroke feel!)
- Long Stroke
- Customized force-way specification
- Customized Acoustic
- Simple assembly
- PCB protection
- Light guiding same as keypads
- Balance bigger keys with silicone domes without metal dome
- Plastic caps are firm – no rattling

Idea of usage

- Replace tact switch
- Replace return spring
- Everywhere you have tact switch

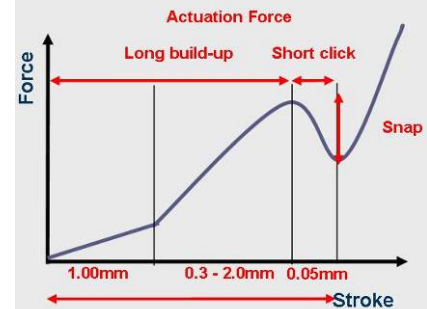
Tech. Daten

| | |
|---------------------------------|--|
| Contact resistance [Ω] | • 1; 100 |
| Key diameter [mm] | • 3.0 – 4.0 |
| Key height [mm] | • 4.0 – 7.0 |
| Stroke [mm] | • 0.3 – 2.0 |
| Actuating force [N] | • 1.5 – 6.0 |
| Snap [%] | • 15 – 30 |
| No. of cycles [#] | • ≥ 50 K (depends on Metal dome and PCB layout) |

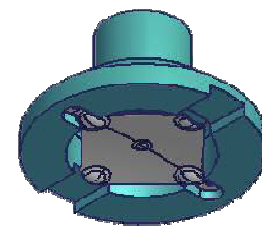
Our Strengths

- Over 15 years know-how and expertise in silicone keypads and input solutions
- Global manufacturing and support

Force-Way Diagram



Typical force/way diagram



Metal dome directly integrated into silicone keypad



In assembly with Flex PCB