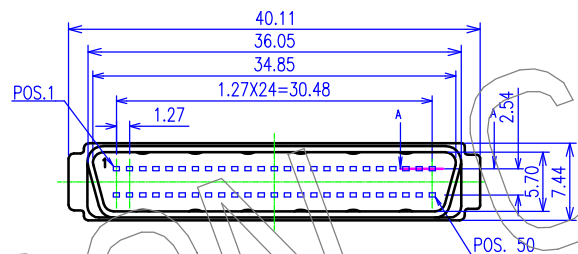
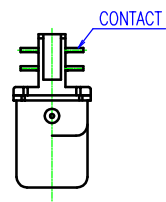
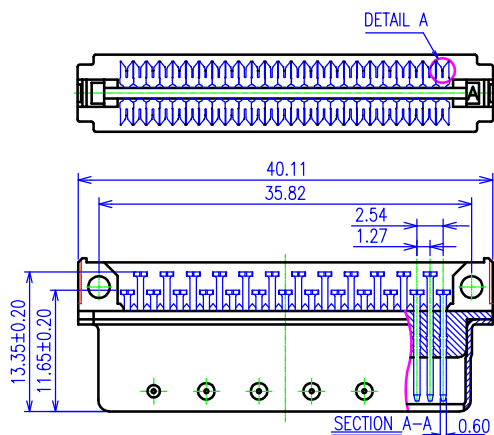
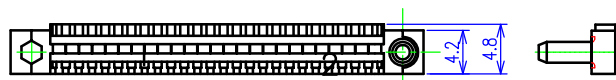
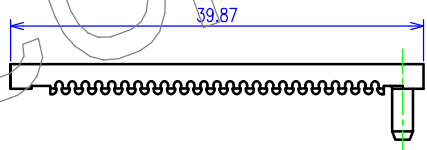


1 2 3 4 5 6 7 8

CONNECTOR BODY



TERMINATION COVER



REV.	EC#	DESCRIPTION	DATE	DRAWN	CHECKED	APPROVED
A	SZECR-03425	NEW RELEASE	05/05/03'	JASON	~	TOM
B	SZECR-03688	MODIFY PART NUMBER $\Delta$ X2	08/19/03'	TOM	~	TOM
C	SZECR09437	$\Delta$ X2, AX2	12/18/09'	ZXF	~	ZHONGHUA
D	SZECR11294	$\Delta$ X2, AX1, MX1	09/08/11'	CHANGWEI	~	ZHONGHUA

NOTE:

- 1.0 SPECIFICATIONS:
  - 1.1 CONTACT CURRENT RATING: 1.0 AMPERES
  - 1.2 DIELECTRIC WITHSTANDING VOLTAGE: AC 500 VOLTAGE R.M.S
  - 1.3 HOUSING RESISTANCE: 1,000 MEGOHMS MINIMUM
  - 1.4 CONTACT RESISTANCE: 35 MILLIOHMS MAXIMUM
  - 1.5 OPERATING TEMPERATURE: -55°C TO +105°C
- 2.0 MATERIALS:
  - 2.1 HOUSING: THERMOPLASTIC, GLASS-FIBER FILLED IN/UL 94V-0 RATED, COLOR TO BE BLACK
  - 2.2 CONTACT: PHOSPHOR BRONZE
  - 2.3 SHELL: STEEL
  - 2.4 TERMINATION COVER: THERMOPLASTIC, GLASS-FIBER FILLED IN/UL 94V-0 RATED, COLOR TO BE BLACK
- 3.0 FINISH:
  - 3.1 CONTACT: SELECTIVE GOLD PLATING
  - 3.2 SHELL: NICKEL OVER COPPER
- 4.0 OTHERS:
  - 4.1 RECOMMENDED WIRE: 26 AWG OR 28 AWG OR 30 AWG, SOLID OR 7 STRAND, WITH A INSULATION DIAMETER FROM 0.74-0.91 mm.
  - 4.2 TERMINATING COVERS ARE PACKAGED SEPARATELY.

5	SHELL	1	S-HAP16-F50200	SEE NOTES
4	HOUSING	1	I-HAP16-A50K01	SEE NOTES
3	SHORT-CONTACT	25	T-HAP16-*00*00	SEE NOTES
2	LONG-CONTACT	25	T-HAP16-*00*00	SEE NOTES
1	TERMINATING COVER	2	I-HAP16-B50K01	SEE NOTES

ITEM	NAME	Q'TY	PART#	MATERIAL / FINISH
TOLERANCES UNLESS OTHERWISE SPECIFIED		DRAWN		DATE
GENERAL	X	±0.38	JASON	05/07/03'
	X	±0.25	DESIGN	DATE
	XX	±0.13	DAVIE	03/12/03'
	XXX	±0.05	CHECKED	DATE
ANGLES	X°	±3.0°		
	X°	±2.0°		
	XX°	±1.0°		
SCALE	2 : 1			
SHEET	1 OF 2		APPROVED	DATE
UNIT	mm		TOM	05/16/03'
CUSTOMER DRAWING		SERIES		HAP16 SERIES
DWG NO.		C-HAP16-03-00		REV: D



HALF-PITCH PIN TYPE SERIES,  
50 POS. CABLE PLUG CONNECTOR  
(CUSTOMER DRAWING)

1

2

3

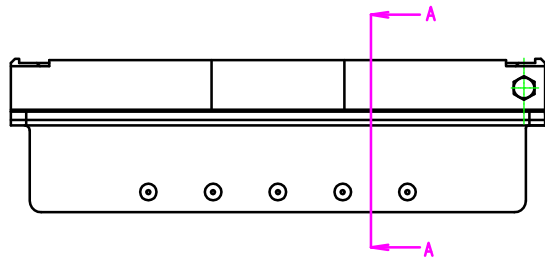
4

5

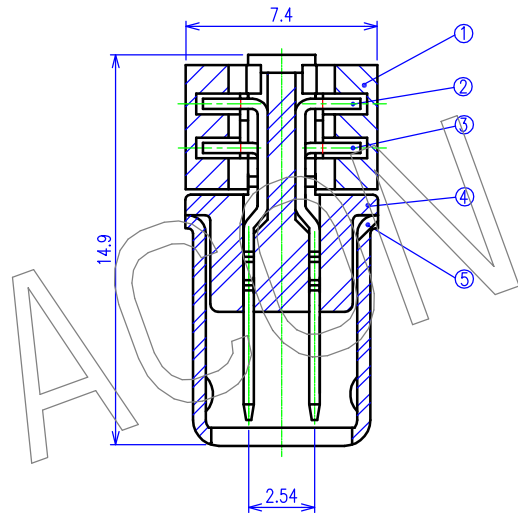
6

7

8



ASSEMBLY  
SCALE 2:1



SECTION A-A  
SCALE 5:1

PRODUCT NUMBERING CODE

△ HAP16 - 50 A \* 2 0 \*  
① ② ③ ④ ⑤

- ① NO. OF POSITION  
50: 50 POSITION
- ② THE COLOR AND LOGO CHANGE OF:  
HOUSING&TERMINATION COVER:  
△ A: BLACK COLOR, W/O COVER&LOGO  
D: BLACK COLOR, W/O LOGO
- △ ③ CONTACT GOLD PLATING THICKNESS AND WIRE GAUGE:  
5 : 30u" GOLD PLATING, OVER 50u" MIN NICKEL 28 AWG (0.08mm<sup>2</sup>)  
E : 30u" GOLD PLATING, OVER 50u" MIN NICKEL 30 AWG (0.05mm<sup>2</sup>)  
△ 4 : 15u" GOLD PLATING, OVER 50u" MIN NICKEL 28 AWG (0.08mm<sup>2</sup>)
- ④ PLATING OF SHELL:  
2: NICKEL PLATING
- ⑤ OTHER:  
1: W/ "U" SLOT

Confidential

DETAIL A(SCALE 10:1)

		TYPE 1	TYPE 2	
		0.220	0.200	
		RECOMMENDATION: USED ON 26&28 AWG 50u" MIN NICKEL PLATING P/N: HAP16-68D520	RECOMMENDATION: USED ON 30 AWG 50u" MIN NICKEL PLATING P/N: HAP16-68DE20	
TOLERANCES UNLESS OTHERWISE SPECIFIED GENERAL: X: ±0.38, X: ±0.25, XX: ±0.13, XXX: ±0.05 ANGLES: X: ±3.0°, X: ±2.0°, XX: ±1.0°		DRAWN: JASON, DATE: 05/07/03' DESIGN: DAVIE, DATE: 03/12/03' CHECKED: [Signature], DATE:		
SCALE: 2:1 SHEET: 2 OF 2 UNIT: mm		APPROVED: TOM, DATE: 05/16/03' CUSTOMER DRAWING		TITLE: 50 POS. CABLE PLUG CONNECTOR (CUSTOMER DRAWING) SERIES: HAP16 SERIES, SIZE: A3 DWG NO.: C-HAP16-03-00, REV: D