

## New Product

**SURFACE MOUNT  
SHIELDED POWER INDUCTOR  
SERIES SDC5125**

### FEATURES

- RoHS compliant
- Shielded
- Low profile
- Ideal for use in LCD drivers, notebook computers, digital cameras, TV, mobile devices and DC-DC converters

### ELECTRICAL SPECIFICATIONS

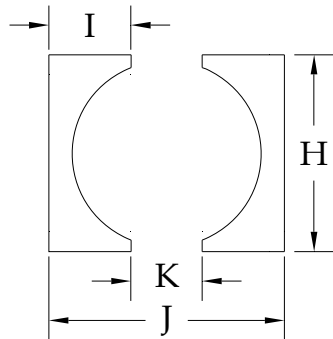
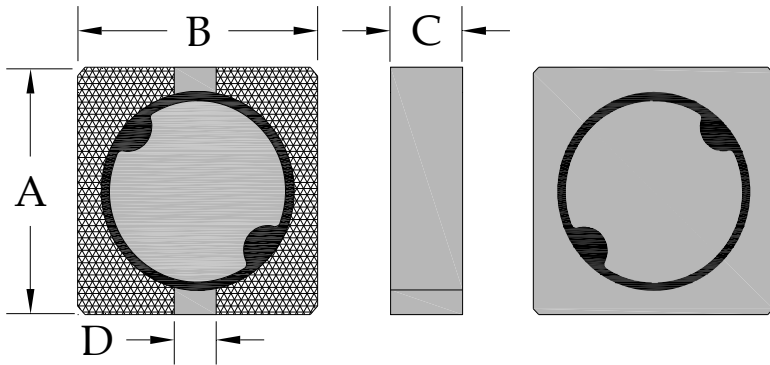
- Inductance range 1uH to 1000uH
- Test condition (1uH - 8.2uH) 100kHz @ 0.25Vrms
- Test condition (10uH - 1000uH) 1kHz @ 0.25Vrms
- Test equipment Quadtech 1750 LCR Meter

### PHYSICAL SPECIFICATIONS

- Operating temp. -25°C to +105°C
- Core Ferrite
- Packaging T & R 1000 or 4000 pieces per reel
- Tape & reel spec. Tape 12 mm embossed carrier
- Reel 178 or 330 mm dia

### Dimensions in millimeters

- Length A 5.3 max
- Width B 5.3 max
- Height C 1.25 max
- Terminal pitch D 2.0 ref



### Suggested PCB land pattern

- H = 5.9
- I = 2.0
- J = 5.9
- K = 1.9

### Notes:

1. Based on  $\Delta L$  of 30% max or  $\Delta T$  of 40°C max, whichever occurs first
2. All test data based on 25°C ambient. Part temperature (max ambient + temp rise) must not exceed 105°C under worst case operating conditions. Circuit design, other components, PCB trace size and thickness, airflow and other cooling provisions all effect the part temperature.

### SPECIFICATIONS

Part Number	L(uH)	Tol % ±	DCR (ohms) max	Rated Current (A) (Note 1)
SDC5125-1R0M	1.0	20	0.044	1.620
SDC5125-1R2M	1.2	20	0.045	1.610
SDC5125-1R5M	1.5	20	0.055	1.480
SDC5125-2R0M	2.0	20	0.065	1.300
SDC5125-2R2M	2.2	20	0.068	1.230
SDC5125-3R5M	3.5	20	0.110	0.930
SDC5125-4R7M	4.7	20	0.120	0.780
SDC5125-5R6M	5.6	20	0.150	0.740
SDC5125-6R2M	6.2	20	0.185	0.720
SDC5125-6R8M	6.8	20	0.200	0.620
SDC5125-8R2M	8.2	20	0.240	0.600
SDC5125-100M	10	20	0.284	0.560
SDC5125-120M	12	20	0.360	0.440
SDC5125-150M	15	20	0.402	0.420
SDC5125-180M	18	20	0.540	0.400
SDC5125-220M	22	20	0.550	0.380
SDC5125-330M	33	20	1.000	0.310
SDC5125-470M	47	20	1.140	0.270
SDC5125-680M	68	20	1.650	0.200
SDC5125-820M	82	20	2.500	0.180
SDC5125-101M	100	20	3.070	0.160
SDC5125-121M	120	20	3.700	0.150
SDC5125-151M	150	20	4.000	0.130
SDC5125-181M	180	20	5.600	0.120
SDC5125-221M	220	20	6.56	0.110
SDC5125-271M	270	20	7.51	0.100
SDC5125-331M	330	20	9.89	0.098
SDC5125-471M	470	20	13.0	0.084
SDC5125-561M	560	20	16.8	0.080
SDC5125-681M	680	20	23.0	0.075
SDC5125-821M	820	20	26.0	0.070
SDC5125-102M	1000	20	35.0	0.060