

## New Product

**SURFACE MOUNT  
SHIELDED POWER INDUCTOR  
SERIES SDE1186**

### FEATURES

- RoHS compliant
- Hybrid materials technology for a unique construction
- Ideal for use in high-power, high-rel systems
- Suitable as a "drop-in" replacement for many competitive designs

### ELECTRICAL SPECIFICATIONS

- Inductance range 10uH to 220uH
- Test condition 1Vrms @ 1kHz
- Test equipment Quadtech 1750 LCR Meter

### PHYSICAL SPECIFICATIONS

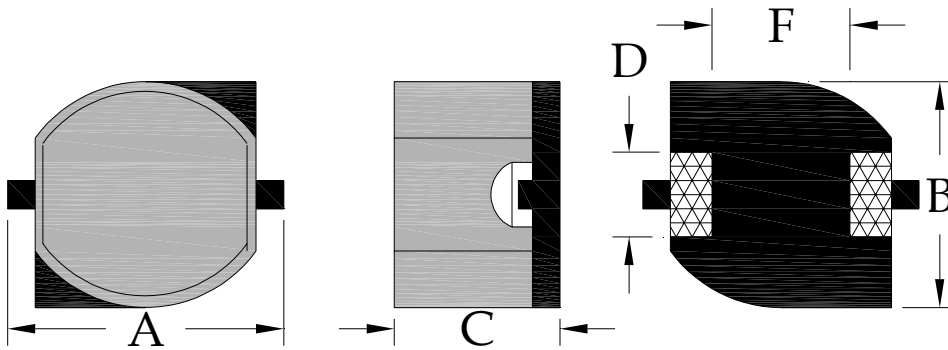
- Operating temp. -25°C to +125°C
- Core Ferrite
- Packaging T & R 900 pieces per reel
- Tape & reel spec. Tape 16 mm embossed carrier
- Reel 330 mm dia

### Dimensions in millimeters

- Length A 10.5 max
- Width B 8.0 $\pm$  0.3
- Height C 5.7 $\pm$  0.3
- Terminal width D 3.0  $\pm$  0.2
- Term spacing F 3.7  $\pm$  0.3

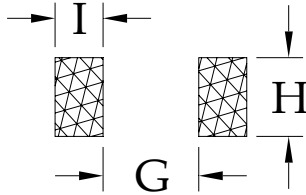
### SPECIFICATIONS

Part Number	L(uH)	Tol % $\pm$	DCR (ohms) max	Rated Current (A) (Note 1)
SDE1186-100M	10	20	0.05	1.60
SDE1186-120M	12	20	0.06	1.45
SDE1186-150M	15	20	0.07	1.40
SDE1186-180M	18	20	0.08	1.30
SDE1186-220M	22	20	0.10	1.10
SDE1186-270M	27	20	0.10	1.00
SDE1186-330M	33	20	0.15	0.92
SDE1186-390M	39	20	0.15	0.84
SDE1186-470M	47	20	0.20	0.76
SDE1186-560M	56	20	0.25	0.68
SDE1186-680M	68	20	0.30	0.63
SDE1186-820M	82	20	0.30	0.58
SDE1186-101M	100	20	0.40	0.50
SDE1186-121M	120	20	0.45	0.46
SDE1186-151M	150	20	0.55	0.40
SDE1186-181M	180	20	0.70	0.38
SDE1186-221M	220	20	0.75	0.36



### Suggested PCB land pattern

- G = 2.8
- H = 2.9
- I = 2.8



#### Notes:

1. Based on  $\Delta L$  of 10% max or 40°C max temperature rise, whichever occurs first.
2. All test data based on 25°C ambient. Part temperature (ambient+temp rise) must not exceed 125°C under worst case operating conditions. Circuit design, components, PCB trace size and thickness, airflow and other cooling provisions all effect the part temperature.