

New Product

**SURFACE MOUNT
SHIELDED POWER INDUCTOR
SERIES SHB6028**

FEATURES

- RoHS compliant
- High power density in a shielded package
- Easy to use in any design
- Ideal for use in motherboards, mobile systems and multimedia players

ELECTRICAL SPECIFICATIONS

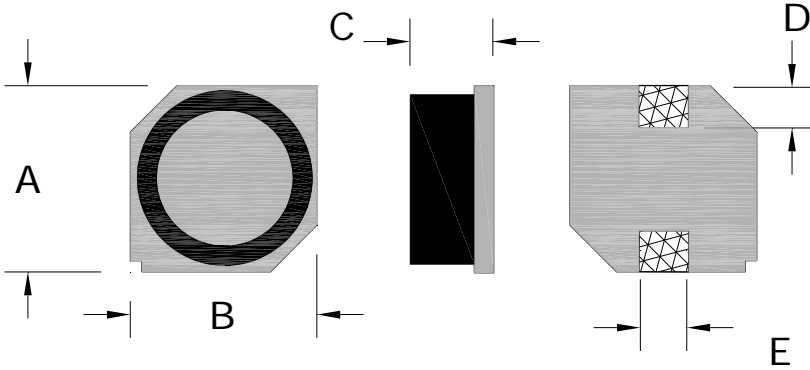
- Inductance range 1.0uH to 8.2mH
- Test condition (1.0uH - 8.2uH) 100kHz @ 0.25Vrms
- Test condition (10uH - 8.2mH) 1kHz @ 0.25Vrms
- Test equipment Quadtech 1750 LCR Meter

PHYSICAL SPECIFICATIONS

- Operating temp. -25°C to +105°C
- Core Ferrite
- Packaging T & R 2000 pieces per reel
- Tape & reel spec. Tape 12 mm embossed carrier
- Reel 330 mm

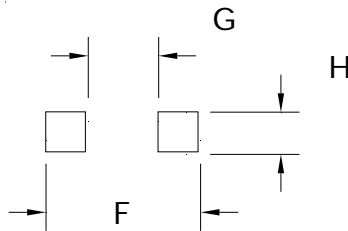
Dimensions in millimeters

- Length A 6.0 ± 0.2
- Width B 6.0 ± 0.2
- Height C 2.8 ± 0.2
- Terminal length D 1.45 ref
- Terminal width E 2.0 ± 0.1



Suggested PCB land pattern

- F = 6.6
- G = 2.8
- H = 2.3



Notes:

1. Based on ΔL of 30% max
2. All test data based on 25°C ambient. Part temperature (max ambient + temp rise) must not exceed 105°C under worst case operating conditions. Circuit design, other components, PCB trace size and thickness, airflow and other cooling provisions all effect the part temperature.

SPECIFICATIONS

Part Number	L(uH)	Tol % ±	DCR (ohms) max	Saturation Current (A) (Note 1)
SHB6028-1R0M	1.0	20	0.024	2.10
SHB6028-1R5M	1.5	20	0.025	2.00
SHB6028-1R8M	1.8	20	0.026	1.95
SHB6028-2R2M	2.2	20	0.028	1.90
SHB6028-2R8M	2.8	20	0.031	1.80
SHB6028-3R5M	3.5	20	0.037	1.70
SHB6028-4R7M	4.7	20	0.046	1.60
SHB6028-5R6M	5.6	20	0.054	1.55
SHB6028-6R8M	6.8	20	0.060	1.50
SHB6028-8R2M	8.2	20	0.074	1.35
SHB6028-100M	10	20	0.083	1.30
SHB6028-120M	12	20	0.098	1.10
SHB6028-150M	15	20	0.132	1.00
SHB6028-180M	18	20	0.156	0.87
SHB6028-220M	22	20	0.168	0.77
SHB6028-270M	27	20	0.216	0.71
SHB6028-330M	33	20	0.252	0.69
SHB6028-390M	39	20	0.288	0.61
SHB6028-470M	47	20	0.348	0.59
SHB6028-560M	56	20	0.396	0.51
SHB6028-680M	68	20	0.456	0.50
SHB6028-820M	82	20	0.552	0.43
SHB6028-101M	100	20	0.732	0.42
SHB6028-121M	120	20	0.792	0.33
SHB6028-151M	150	20	1.10	0.30
SHB6028-181M	180	20	1.26	0.28
SHB6028-221M	220	20	1.46	0.25
SHB6028-271M	270	20	1.92	0.22
SHB6028-331M	330	20	2.16	0.21
SHB6028-391M	390	20	2.76	0.20
SHB6028-471M	470	20	3.24	0.18
SHB6028-561M	560	20	3.84	0.16
SHB6028-681M	680	20	4.32	0.15
SHB6028-821M	820	20	5.64	0.13
SHB6028-102M	1000	20	6.96	0.12
SHB6028-122M	1200	20	8.40	0.11
SHB6028-152M	1500	20	11.04	0.10
SHB6028-182M	1800	20	13.56	0.09
SHB6028-222M	2200	20	15.60	0.085
SHB6028-252M	2500	20	17.88	0.080
SHB6028-272M	2700	20	19.20	0.075
SHB6028-332M	3300	20	22.80	0.072
SHB6028-392M	3900	20	31.80	0.063
SHB6028-472M	4700	20	35.04	0.060
SHB6028-562M	5600	20	44.40	0.055
SHB6028-682M	6800	20	52.20	0.048
SHB6028-822M	8200	20	58.20	0.045