

New Product

**SURFACE MOUNT
SHIELDED POWER INDUCTOR
SERIES SDC1067**

FEATURES

- RoHS compliant
- Shielded
- Low profile
- Ideal for use in LCD drivers, notebook computers, digital cameras, TV, mobile devices and DC-DC converters

ELECTRICAL SPECIFICATIONS

- Inductance range 0.56uH to 15uH
- Test condition 0.25Vrms @ 100kHz
- Test instrument Quadtech 1750 LCR Meter
- Tolerances available 20% (M) and 30% (Y)

PHYSICAL SPECIFICATIONS

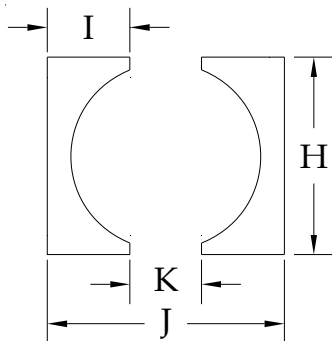
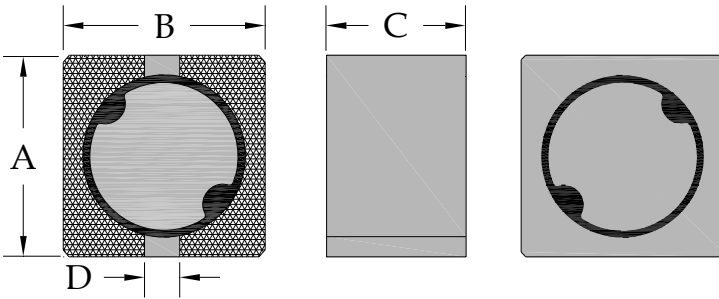
- Operating temp. -25°C to +105°C
- Core Ferrite
- Packaging T & R 500 pieces per reel
- Tape & reel spec. Tape 24 mm embossed carrier
- Reel 330 mm

SPECIFICATIONS

| Part Number | L(uH) | Tol % ± | DCR (ohms) max | Rated Current (A) (Note 1) |
|-------------|-------|---------|----------------|----------------------------|
| SDC1067-R56 | 0.56 | 20, 30 | 0.006 | 10.18 |
| SDC1067-1R0 | 1.0 | 20, 30 | 0.007 | 9.80 |
| SDC1067-1R6 | 1.6 | 20, 30 | 0.0075 | 9.50 |
| SDC1067-2R4 | 2.4 | 20, 30 | 0.0087 | 5.71 |
| SDC1067-3R3 | 3.3 | 20, 30 | 0.013 | 5.30 |
| SDC1067-4R3 | 4.3 | 20, 30 | 0.014 | 5.10 |
| SDC1067-4R7 | 4.7 | 20, 30 | 0.015 | 5.00 |
| SDC1067-5R6 | 5.6 | 20, 30 | 0.016 | 3.50 |
| SDC1067-150 | 15 | 20, 30 | 0.023 | 2.16 |

Dimensions in millimeters

- Length A 10.0 ± 0.3
- Width B 10.0 ± 0.3
- Height C 6.7 max
- Terminal pitch D 2.5 ref



Suggested PCB land pattern

- H = 10.4
- I = 3.7
- J = 10.4
- K = 3.0

Notes:

1. Based on ΔL of 30% max or ΔT of 40°C max, whichever occurs first
2. All test data based on 25°C ambient. Part temperature (max ambient + temp rise) must not exceed 105°C under worst case operating conditions. Circuit design, other components, PCB trace size and thickness, airflow and other cooling provisions all effect the part temperature.