

New Product

**SURFACE MOUNT
SHIELDED POWER INDUCTOR
SERIES SDC4420**

FEATURES

- RoHS compliant
- Shielded
- Low profile
- Ideal for use in LCD drivers, notebook computers, digital cameras, TV, mobile devices and DC-DC converters

ELECTRICAL SPECIFICATIONS

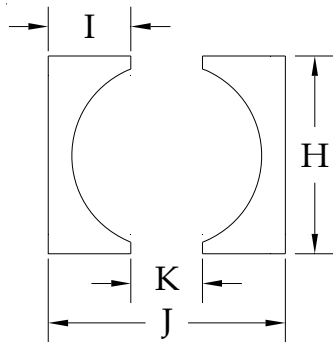
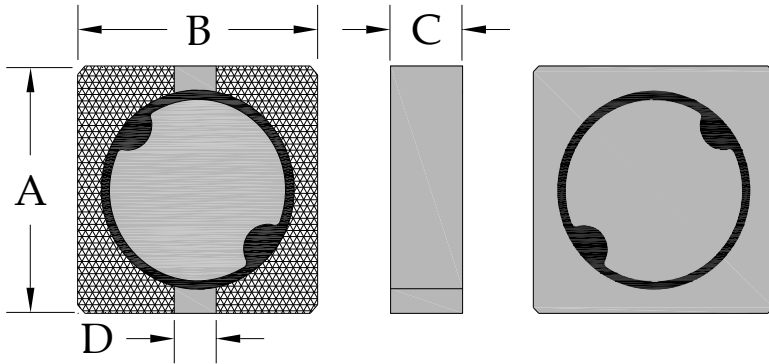
- Inductance range 0.47uH to 2.2mH
- Test condition (0.47uH - 8.2uH) 0.25Vrms @ 100kHz
- Test condition (10uH - 2.2mH) 0.25Vrms @ 1kHz
- Test equipment Quadtech 1750 LCR Meter

PHYSICAL SPECIFICATIONS

- Operating temp. -25°C to +105°C
- Core Ferrite
- Packaging T & R 1000 or 3500 pieces per reel
- Tape & reel spec. Tape 12 mm embossed carrier
- Reel 178 or 330 mm dia

Dimensions in millimeters

- Length A 3.8 ± 0.3
- Width B 3.8 ± 0.3
- Height C 2.0 max
- Terminal pitch D 1.2 ref



Suggested PCB land pattern

- H = 4.4
- I = 1.6
- J = 4.4
- K = 1.2

Notes:

1. Based on ΔL of 30% max or ΔT of 40°C max, whichever occurs first
2. All test data based on 25°C ambient. Part temperature (max ambient + temp rise) must not exceed 105°C under worst case operating conditions. Circuit design, other components, PCB trace size and thickness, airflow and other cooling provisions all effect the part temperature.

SPECIFICATIONS

Part Number	L(uH)	Tol % ±	DCR (ohms) max	Rated Current (A) (Note 1)
SDC4420-R47N	0.47	30	0.017	1.84
SDC4420-1R0M	1.0	20	0.030	1.80
SDC4420-1R2M	1.2	20	0.043	1.70
SDC4420-1R5M	1.5	20	0.052	1.60
SDC4420-2R2M	2.2	20	0.058	1.50
SDC4420-2R5M	2.5	20	0.059	1.40
SDC4420-3R3M	3.3	20	0.064	1.30
SDC4420-3R5M	3.5	20	0.127	1.30
SDC4420-3R9M	3.9	20	0.135	1.12
SDC4420-4R7M	4.7	20	0.146	1.10
SDC4420-5R6M	5.6	20	0.176	0.95
SDC4420-6R2M	6.2	20	0.220	0.91
SDC4420-6R8M	6.8	20	0.238	0.90
SDC4420-8R2M	8.2	20	0.272	0.80
SDC4420-100M	10	20	0.299	0.70
SDC4420-150M	15	20	0.472	0.61
SDC4420-220M	22	20	0.592	0.52
SDC4420-270M	27	20	0.630	0.44
SDC4420-330M	33	20	1.075	0.43
SDC4420-470M	47	20	1.309	0.34
SDC4420-680M	68	20	2.613	0.25
SDC4420-820M	82	20	2.950	0.20
SDC4420-101M	100	20	3.255	0.19
SDC4420-151M	150	20	3.550	0.12
SDC4420-221M	220	20	4.90	0.09
SDC4420-331M	330	20	7.28	0.08
SDC4420-681M	680	20	13.37	0.07
SDC4420-102M	1000	20	19.55	0.065
SDC4420-152M	1500	20	36.15	0.038
SDC4420-182M	1800	20	57.62	0.036
SDC4420-222M	2200	20	84.43	0.035