

New Product

HIGH CURRENT POWER INDUCTOR SERIES SHCI1305

FEATURES

- RoHS compliant
- Ultra high power density
- Manufacturing friendly package
- High durability construction
- Perfect for use in video cards, motherboards and automotive computer applications

SPECIFICATIONS

Part Number	L(uH) ± 20%	DCR (ohms) max	Saturation Current (A) (Note 1)	Rated Current (A) (Note 2)
SHCI1305-R68M	0.68	0.0014	22/38	26
SHCI1305-1R2M	1.20	0.0023	16/30	20
SHCI1305-1R8M	1.80	0.004	12/22	16
SHCI1305-2R7M	2.70	0.005	10/18	14

ELECTRICAL SPECIFICATIONS

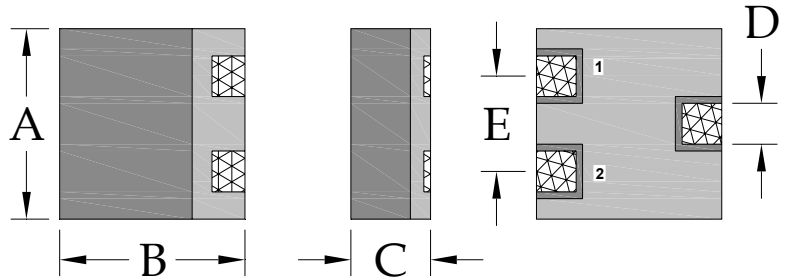
- Inductance range 0.68uH to 2.7uH
- Test condition 0.1Vrms @ 100kHz
- Test equipment Quadtech 1750 LCR Meter

PHYSICAL SPECIFICATIONS

- Operating temp. -25°C to +125°C
- Core Alloy powder
- Packaging T & R 600 pieces per reel
- Tape & reel spec. Tape 24 mm embossed carrier
- Reel 330 mm dia

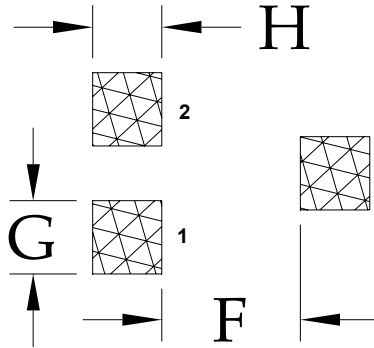
Dimensions in millimeters

- Length A 12.7 ± 0.4
- Width B 12.7 ± 0.4
- Height C 5.3 ± 0.3
- Terminal length D 2.0 ± 0.2
- Term pitch E 7.0 ± 0.5



Suggested PCB land pattern

- F 7.0
- G 3.0
- H 3.3



Notes:

1. Based on ΔL of 10% / 20% typical
2. Based on max ΔT of 45°C

All test data based on 25°C ambient. Part temperature (ambient+temp rise) must not exceed 125°C under worst case operating conditions. Circuit design, components, PCB trace size and thickness, airflow and other cooling provisions all effect the part temperature.