

Application of Program

AGM Deep Cycle

▶ **BA6-4.5 | BA6-12 | BA12-2.9 | BA12-5 | BA12-5.8 | BA12-7T1 | BA12-7T2**



Emergency Light



Electronic Equipment



UPS



Signals

- UPS
- Emergency light
- Signal
- Security systems
- Electronic equipment
- DC power supply
- Network communication

AGM Deep Cycle Plus

▶ **BAC12-20 | BAC12-26 | BAC12-33 | BAC12-55 | BAC12-75 | BAC12-100R | BAC12-150 | BAC12-200 | BAC12-38FR | BAC12-75FR | BAC12-120RFR**



Electric Toy



Wheel Chairs



Medical Equipment

- Electric tools
- Lawn mower
- Portable apparatus
- Electric toys
- Illumination light
- Wheel chairs
- Medical equipment
- Solar Power

GEL Deep Cycle

▶ **BG12-38 | BG12-70 | BG12-100**



Solar / Wind Power



Telecommunication

- Telecommunication backup
- Power plants
- Burglar alarms
- Medical equipment (stationary and portable i.e. X-ray machine)
- Computer backup (high power)
- Communication
- Fire alarm
- Transmitter
- Cash register
- Emergency light signal
- Telephone
- Clock
- Uninterrupted power supply
- Elevator emergency power supply (skyscrapers)
- Solar applications
- Mobile stations
- Airport/runway emergency illumination
- Emergency power supply for hospitals
- Radar and satellite stations



Power Supplier

Robert Bosch (Australia) Pty. Ltd.
1555 Centre Road
Clayton VIC 3168

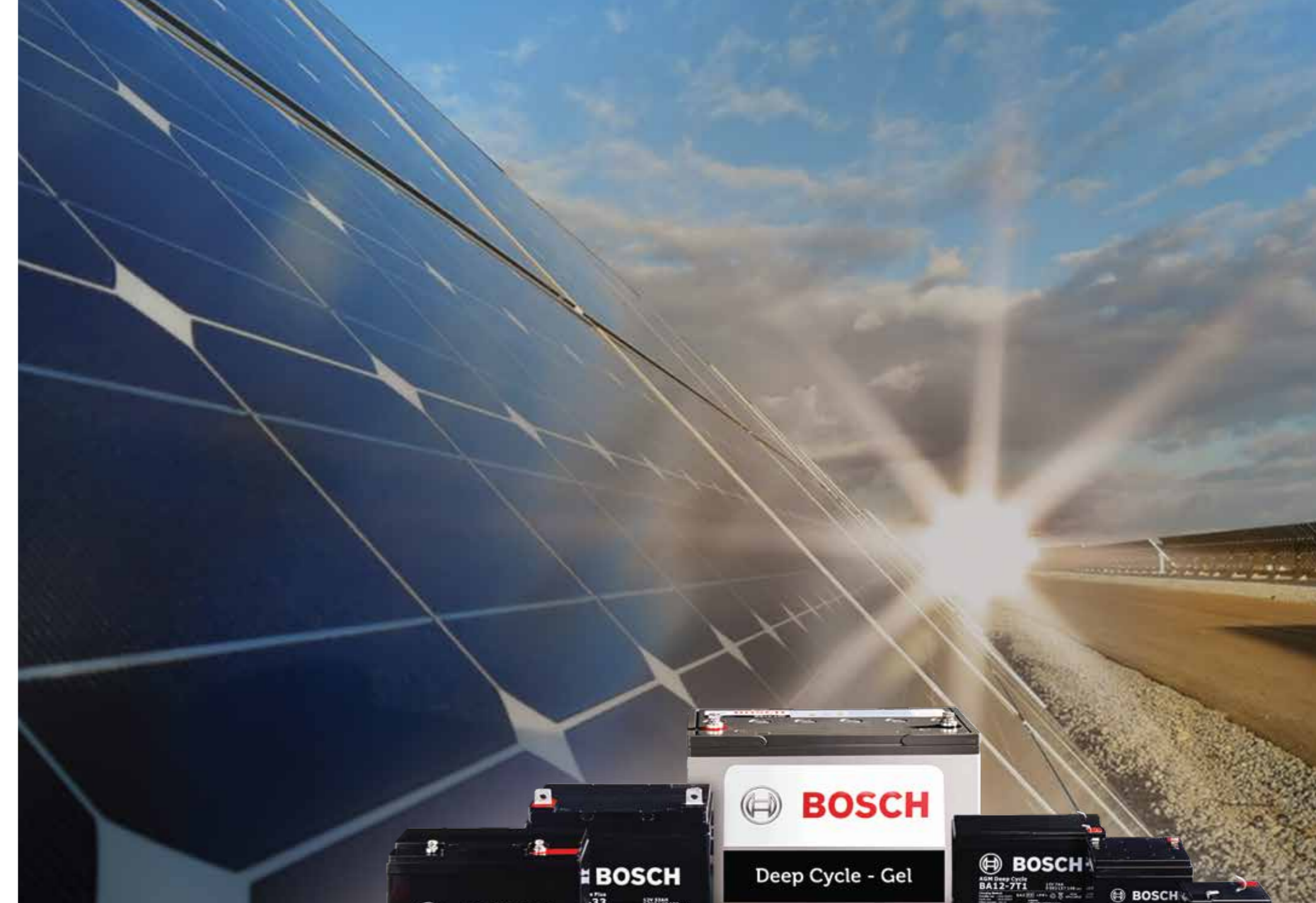
For further information please contact Bosch on:
Australia **1300 30 70 40** www.boschautoparts.com.au
New Zealand **0800 452 896** www.boschautoparts.co.nz

Authorised Dealer

The readers of the German automobile magazine "auto, motor und sport" have voted Bosch as the best brand in the battery category for nine times in a row.



Whilst every care has been taken in the preparation of this publication, Bosch does not warrant the accuracy or completeness of the information in this publication and Bosch reserves the right to alter specifications without notice. To the extent permitted by law, including the Australian Consumer Law and the Consumer Guarantees Act 1993 (NZ), Bosch excludes all liability, including negligence, for any loss incurred in the reliance on the contents of this publication.



The Reliable Backup Power

Bosch Reserve Power Batteries

 **BOSCH**
Invented for life

 **BOSCH**
Invented for life

Reserve Power Battery

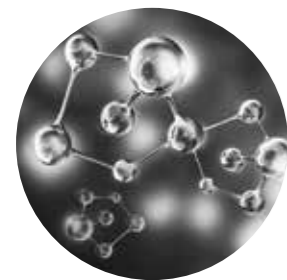
A Reserve Power Battery is developed for cycling purpose as a power bank, such as UPS, security system, DC backup power, solar backup, golf trolleys, telecoms and more.

To reserve stable power for a long period of time without recharging, the battery is required to have a deep cycle life performance and a high discharge capacity.

▶ Reserve Power Battery Program (VRLA type)

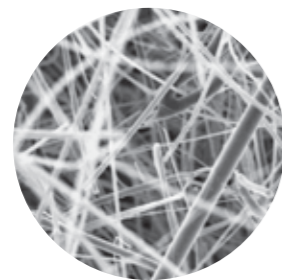
- GEL Deep Cycle
- AGM Deep Cycle Plus
- AGM Deep Cycle

* VRLA (Valve-Regulated Lead Acid)



What is a GEL Battery?

GEL is produced by homogeneous dispersion of pyrogenic silica in diluted sulfuric acid. Pyrogenic silica is a kind of powder of very well dispersed SiO₂, which can absorb more than 10 times of its weight liquids, producing gel. The battery is locked tightly and has an optimized amount of spill proof electrolyte. It has excellent performance in protecting its components and superior deep discharge property.



What is an AGM Battery?

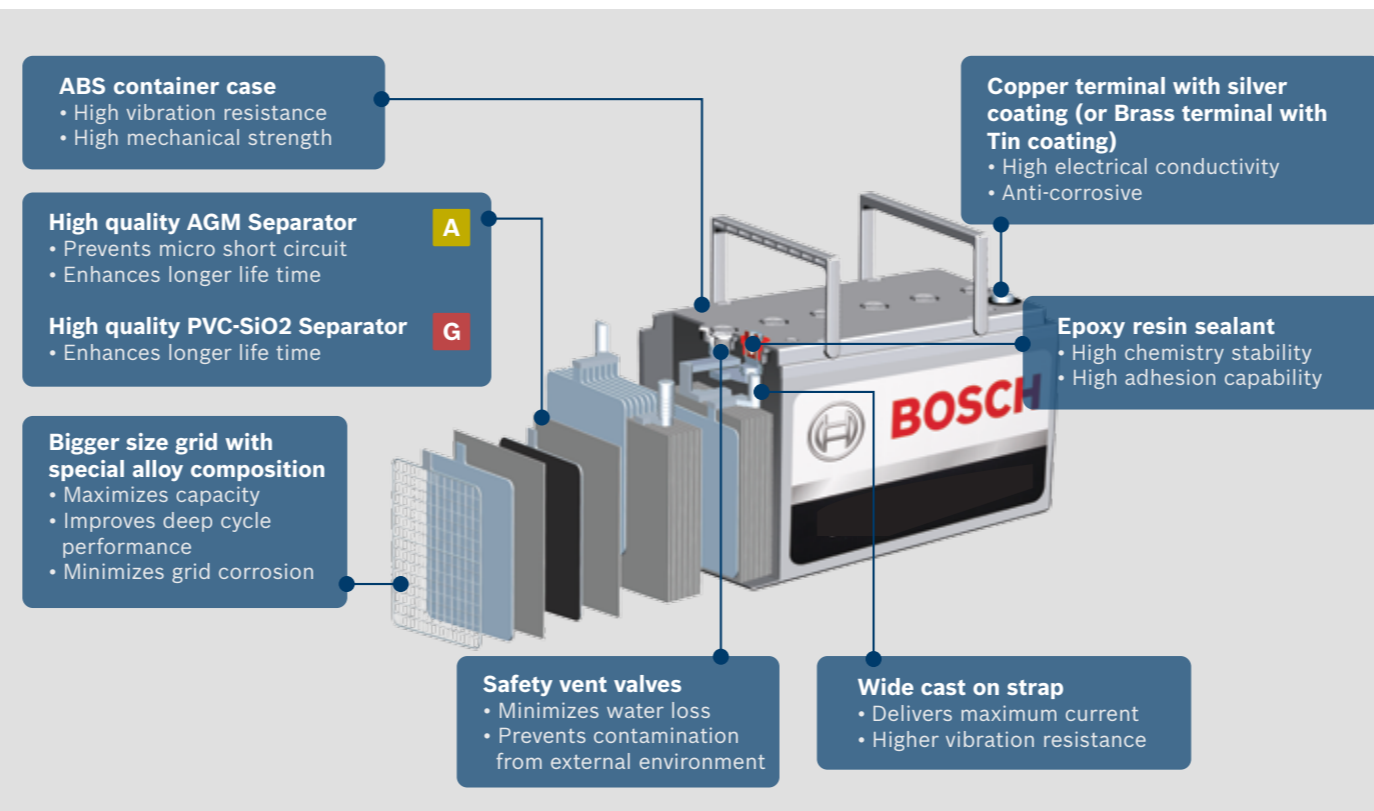
AGM (Absorbent Glass Mat) battery is one of the leading battery technologies which has a special separator with stored electrolyte that makes it spill proof. It also has a high internal plate compression that can achieve twice the cycle life of a typical flooded battery with the correct application.

GEL and AGM technology at a glance	GEL G	AGM A
Maintenance-free design	Yes	Yes
Internal oxygen recombination	Yes	Yes
Spill proof	Yes	Yes
Low self discharge rate	Yes	Yes
Recharging efficiency	Good	Good
Stability of capacity over cycle life	Very Good	Good
Deep Cycle life and resiliency to deep discharge damage	Very Good	Good
Best combination of starting and cycling purpose	Good	Very Good
High current discharge performance	Good	Very Good

Stable and Always Ready

Features and Benefits

GEL Battery	GEL & AGM Common Advantages	AGM Battery
<p>Pure GEL technology</p> <ul style="list-style-type: none"> • Long service life for deep cycle & standby applications • Anti-thermal runaway effect • Prevents acid stratification 	<p>Super excellence in deep cycle service life</p> <ul style="list-style-type: none"> • Prevents acid stratification • High vibration resistance 	<p>AGM technology</p> <ul style="list-style-type: none"> • Extended service life time via efficient gas recombination reaction • Ideal technology for starting and cycling combination performance
<p>High performance and reliability</p> <ul style="list-style-type: none"> • Excellent to recover from deep discharge status • High charging acceptance • Suitable for outdoor installation 	<p>Spill proof design</p> <ul style="list-style-type: none"> • Operates at severe angles • Air transportable 	<p>Higher power density</p> <ul style="list-style-type: none"> • Excellent to deliver high power • Low internal resistance
	<p>Long storage life</p> <ul style="list-style-type: none"> • Low self discharge rate 	



Program Specification

Bosch P/N	Voltage (V)	20 Hr Capacity (Ah)	Length (mm)	Width (mm)	Total Height (mm)	Terminal Type
AGM Deep Cycle						
BA6-4.5	6V	4.5	70	47	106	T1
BA6-7	6V	7.0	151	34	100	T1
BA6-12	6V	12.0	151	51	100	T1
BA12-2.9	12V	2.9	79	56	105	T1
BA12-5	12V	5.0	151	53	99	T1
BA12-5.8	12V	5.8	90	70	107	T1
BA12-5.8T2	12V	5.8	90	70	107	T2
BA12-7T1	12V	7.0	151	65	99	T1
BA12-7T2	12V	7.0	151	65	99	T2
BA12-9	12V	9.0	151	65	99	T2
BA12-12	12V	12.0	151	98	101	T2
BA12-14	12V	14.0	151	98	101	T2

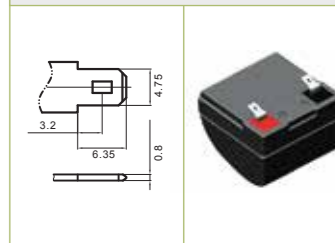
AGM Deep Cycle Plus						
BAC12-20	12V	21.4	181.5	77	166.5	T12
BAC12-26	12V	27.8	166	175	125	T3
BAC12-33	12V	35.4	195	130	182	T5
BAC12-38FR	12V	40.7	197	165	170	T6
BAC12-55	12V	59.0	228	137	216	T6
BAC12-75	12V	80.4	259	168	214	T6
BAC12-75FR	12V	80.4	259	168	214	T6
BAC12-100R	12V	100.0	305	168	213	T6
BAC12-120RFR	12V	120.0	330	173	220	T11
BAC12-150	12V	160.8	483	170	238.5	T11
BAC12-200	12V	214.4	522	240	224	T11

Gel Deep Cycle						
BG12-38	12V	38.0	197	165	170	T6
BG12-70	12V	70.0	259	168	214	T6
BG12-100	12V	96.0	330	173	218	T11
BG12-135	12V	135.0	485	170	240	T11
BG12-200	12V	200.0	522	240	224	T11
BG12-240	12V	240.0	522	268	226	T11

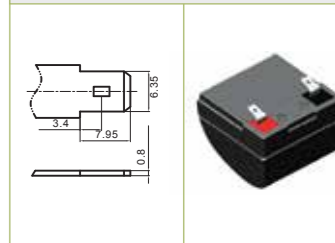
T12	Brass coated with Tin - Threaded Insert 5mm STUD Torque: 2.0 -3.0 N.m		
T11	Brass coated with Tin - Threaded Insert 8mm STUD Torque: 11 -14.7 N.m		
T6	Brass coated with Tin - Threaded Insert 6mm STUD Torque: 3.9-5.4 N.m		
T5	Lead Torque: 3.9-5.4 N.m		

Terminal Specification

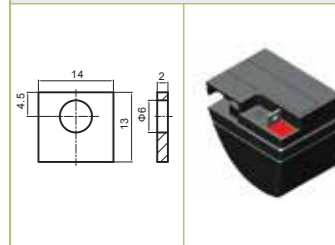
T1 Copper coated with Silver - FASTON



T2 Copper coated with Silver - FASTON



T3 Brass coated with Tin
Torque: 3.9-5.4 N.m



T5 Lead
Torque: 3.9-5.4 N.m

