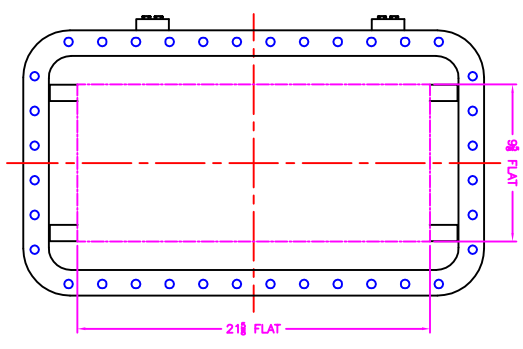
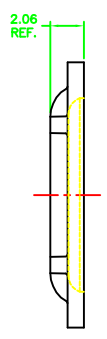
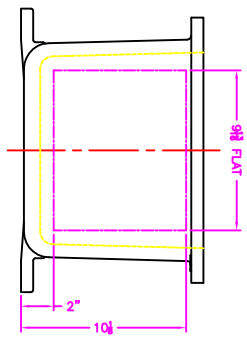
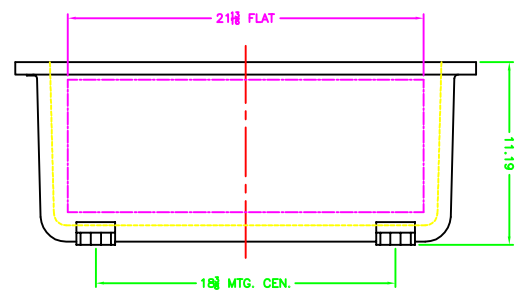


OPTIONAL MTG. PAN



XCE 1224 COVER

- NOTES:
- COVER DRILLING TO MINIMUM SPACING FROM CENTER OF OPERATOR TO NEAREST FLAT IS $1\frac{1}{4}$ INCH.
 - ALLOWABLE IN MINIMUM SPACING BETWEEN #14 NPSM OPERATOR CENTERS IS 3 FOR THIS ENCLOSURE.
 - XCE ONLY.
 - MAXIMUM NUMBER OF OPERATORS IS 21.
 - DIMENSION FROM CENTER LINE OF COVER FOR OPERATORS.
 - DIMENSION FROM CENTER LINE AND BACK OF MFG. LUG FOR CONDUIT.
 - FOR MFG. ENCLOSURE USE #1 BOLT.

		MODIFIED XCE/XUF 1224+10 ENCLOSURE FOR	
DATE: 11-12-01 BY: DDH CHECKED: 1-4 D TUMBALYST XCE/XUF 1224+10	DATE: 11-12-01 BY: DDH CHECKED: 1-4 D TUMBALYST XCE/XUF 1224+10	DATE: 11-12-01 BY: DDH CHECKED: 1-4 D TUMBALYST XCE/XUF 1224+10	DATE: 11-12-01 BY: DDH CHECKED: 1-4 D TUMBALYST XCE/XUF 1224+10