

Control Enclosures

Adalet's Single Door Clamped Control Enclosures are available in stainless steel 316L & 304. Adalet can also supply custom size enclosures, operators, and wiring of devices to rail mounted terminal blocks to suit your Increased Safety application. Silicone gaskets, removeable hinge pin, box & cover ground studs including an external earthing stud, along with internal standoffs for mounting pans are included as standard.

STANDARD FEATURES

- 68 standard sizes available
- Stainless steel quarter turn latch with 3mm double bit insert (includes key)
- Continuous one-piece water tight silicone gasket
- Continuous piano hinge with removable stainless steel pin
- Ground stud on box and cover
- External earth stud
- Wall mounting feet (vertical or horizontal)

DESIGN OPTIONS

- Gland plates (6" deep or greater) can be supplied pre-drilled or blank for field drilling
- Mounting panels
- Drilled entries and cut-outs
- Adalet EH series Exe operators
- Legend plates and lamacoid or stainless steel name plates
- Breather / drain & stopping plugs
- Terminal block assemblies
- Stainless steel mounting panels
- Cable glands and conduit fittings
- Internal earth bar

MATERIAL

- Type 304 or 316L Stainless Steel
- Enclosure and cover constructed from 14 gauge (.060) stainless steel with #3/4 brush finish
- Gland plates constructed from 10 gauge (.1046) stainless steel with a #3/4 brush finish
- Silicone gasket constructed from 1/4" Bisco silicone with acrylic PSA
- Gland plate gasket constructed from 1/8" Bisco silicone with acrylic PSA



CERTIFICATIONS

POPULATED ENCLOSURE

Class I, Division 2, Groups A, B, C, D

Class II, Division 2, Groups F, G

Class I, Zone 1, AEx d e mb IIC T6 (T5:Ta<+55 °C)

NEMA Type 4X, 12, 13

Ex d e mb IIC T6X (T5:Ta<+55 °C)

Ex d e mb IIC T6(T5:Ta<+55 °C)

Ex tD A21 IP66 T200 °C

IECEX UL 09.0020X

DEMKO 01 ATEX 130437X

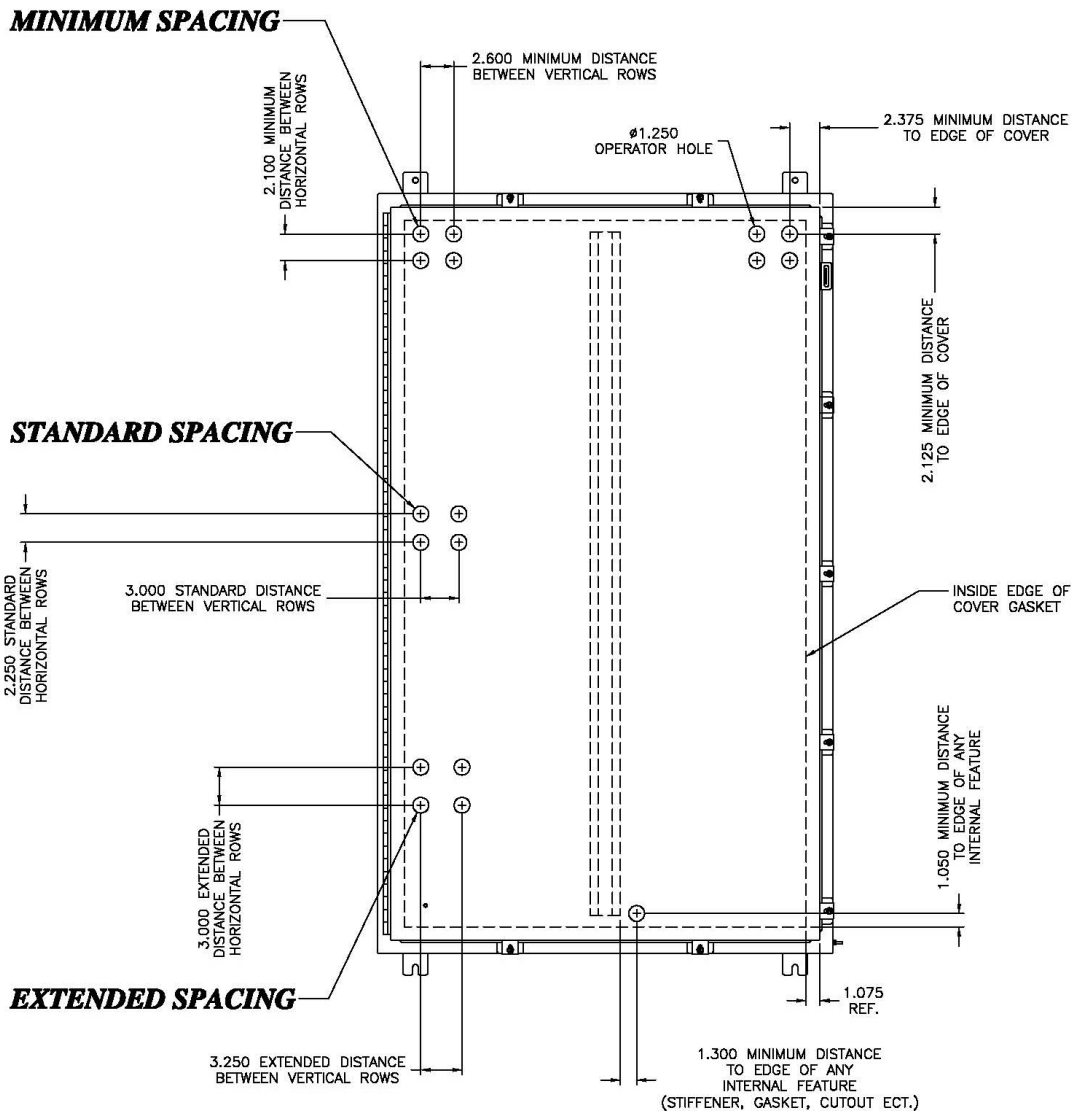
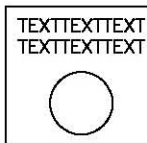
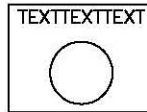
CE 0539 Ex II 2 G Ex d e mb IIC T6 (T5:Ta<+55 °C)

CE 0539 Ex II 2 D Ex tD A21 IP66 T200 °C



ADALET OPERATOR SPACING OPTIONS:

1. ADALET MINIMUM SPACING: MINIMUM ALLOWABLE SPACING, DOES NOT ALLOW FOR ANY LEGEND PLATES.
2. ADALET STANDARD SPACING: ALLOWS FOR STANDARD LEGEND PLATES FOR MAXIMUM ONE LINE OF ENGRAVED TEXT.
3. ADALET EXTENDED SPACING: ALLOWS FOR EXTENDED LEGEND PLATES FOR MAXIMUM TWO LINES OF ENGRAVED TEXT.



CONTROL ENCLOSURES

INCREASED SAFETY ENCLOSURES

INCHES

| CN Series - Control Enclosure 316L Stainless Steel | | | | | | | | | | | | | |
|--|-------|------|--------------|----|----|------------|-------|----------|-----------------|-----|----------------|------------|----|
| ENCLOSURE | GAUGE | | OUTSIDE DIM. | | | STIFFENERS | | CLAMPS # | MOUNTING CENTER | | PANEL PART NO. | PANEL DIM. | |
| | BOX | DOOR | A | B | C | BOX | DOOR | | | | | X | Y |
| CN4X6-161206 | 16 | 14 | 16 | 12 | 6 | - | - | 4 | 17.25 | 9.5 | V1612 | 13 | 9 |
| CN4X6-161606 | 16 | 14 | 16 | 16 | 6 | - | - | 4 | 17.25 | 10 | V1616 | 13 | 13 |
| CN4X6-162006 | 16 | 14 | 16 | 20 | 6 | - | - | 4 | 17.25 | 14 | V2016 | 13 | 17 |
| CN4X6-201606 | 16 | 14 | 20 | 16 | 6 | - | - | 4 | 21.25 | 10 | V2016 | 17 | 13 |
| CN4X6-202006 | 16 | 14 | 20 | 20 | 6 | - | - | 4 | 21.25 | 14 | V2020 | 17 | 17 |
| CN4X6-202406 | 16 | 14 | 20 | 24 | 6 | - | - | 4 | 21.25 | 18 | V2420 | 17 | 21 |
| CN4X6-241206 | 16 | 14 | 24 | 12 | 6 | - | - | 5 | 25.25 | 9.5 | V2412 | 21 | 9 |
| CN4X6-241606 | 16 | 14 | 24 | 16 | 6 | - | - | 5 | 25.25 | 10 | V2416 | 21 | 13 |
| CN4X6-242006 | 16 | 14 | 24 | 20 | 6 | - | - | 5 | 25.25 | 14 | V2420 | 21 | 17 |
| CN4X6-242406 | 16 | 14 | 24 | 24 | 6 | - | - | 5 | 25.25 | 18 | V2424 | 21 | 21 |
| CN4X6-302006 | 14 | 14 | 30 | 20 | 6 | - | - | 5 | 31.25 | 14 | V3020 | 27 | 17 |
| CN4X6-302406 | 14 | 14 | 30 | 24 | 6 | - | - | 5 | 31.25 | 18 | V3024 | 27 | 21 |
| CN4X6-362406 | 14 | 14 | 36 | 24 | 6 | - | - | 5 | 37.25 | 18 | V3624 | 33 | 21 |
| CN4X6-363006 | 14 | 14 | 36 | 30 | 6 | REQ'D | - | 7 | 37.25 | 24 | V3630 | 33 | 27 |
| CN4X6-161208 | 16 | 14 | 16 | 12 | 8 | - | - | 4 | 17.25 | 9.5 | V1612 | 13 | 9 |
| CN4X6-161608 | 16 | 14 | 16 | 16 | 8 | - | - | 4 | 17.25 | 10 | V1616 | 13 | 13 |
| CN4X6-162008 | 16 | 14 | 16 | 20 | 8 | - | - | 4 | 17.25 | 14 | V1620 | 13 | 17 |
| CN4X6-201608 | 16 | 14 | 20 | 16 | 8 | - | - | 4 | 21.25 | 10 | V2016 | 17 | 13 |
| CN4X6-202008 | 16 | 14 | 20 | 20 | 8 | - | - | 4 | 21.25 | 14 | V2020 | 17 | 17 |
| CN4X6-202408 | 16 | 14 | 20 | 24 | 8 | - | - | 4 | 21.25 | 18 | V2024 | 17 | 21 |
| CN4X6-241608 | 16 | 14 | 24 | 16 | 8 | - | - | 5 | 25.25 | 10 | V2416 | 21 | 13 |
| CN4X6-242008 | 16 | 14 | 24 | 20 | 8 | - | - | 5 | 25.25 | 14 | V2420 | 21 | 17 |
| CN4X6-242408 | 16 | 14 | 24 | 24 | 8 | - | - | 5 | 25.25 | 18 | V2424 | 21 | 21 |
| CN4X6-243008 | 14 | 14 | 24 | 30 | 8 | - | - | 7 | 25.25 | 24 | V3024 | 27 | 21 |
| CN4X6-302008 | 14 | 14 | 30 | 20 | 8 | - | - | 5 | 31.25 | 14 | V3020 | 27 | 17 |
| CN4X6-302408 | 14 | 14 | 30 | 24 | 8 | - | - | 5 | 31.25 | 18 | V3024 | 27 | 21 |
| CN4X6-303008 | 14 | 14 | 30 | 30 | 8 | REQ'D | - | 7 | 31.25 | 24 | V3030 | 27 | 27 |
| CN4X6-362408 | 14 | 14 | 36 | 24 | 8 | - | - | 5 | 37.25 | 18 | V3624 | 33 | 21 |
| CN4X6-363008 | 14 | 14 | 36 | 30 | 8 | REQ'D | - | 7 | 37.25 | 24 | V3630 | 33 | 27 |
| CN4X6-363608 | 14 | 14 | 36 | 36 | 8 | REQ'D | REQ'D | 7 | 37.25 | 30 | V3636 | 33 | 33 |
| CN4X6-423008 | 14 | 14 | 42 | 30 | 8 | REQ'D | REQ'D | 8 | 43.25 | 24 | V4230 | 39 | 27 |
| CN4X6-423608 | 14 | 14 | 42 | 36 | 8 | REQ'D | REQ'D | 8 | 43.25 | 30 | V4236 | 39 | 33 |
| CN4X6-483608 | 14 | 14 | 48 | 36 | 8 | REQ'D | REQ'D | 8 | 49.25 | 30 | V4836 | 45 | 33 |
| CN4X6-201610 | 16 | 14 | 20 | 16 | 10 | - | - | 4 | 21.25 | 10 | V2016 | 17 | 13 |

Information is subject to change without notice

Measurements in inches

- NOTES**
1. For stainless steel 304 constructions, substitute CN4X6 (SS316L Prefix) with CN4X (SS304 Prefix).
 2. Gland plate options area available on enclosure < 12 inches deep, consult factory for gland plates on enclosures > 10 inches deep.

Add the following suffixes for gland plates:

- A: Gland plate installed on TOP side of box
- B: Gland plate installed on BOTTOM side of box
- C: Gland plate installed on LEFT side of box
- D: Gland plate installed on RIGHT side of box

For multiple gland plates omit dashes. (i.e. CN4X6-161608-ABCD)

CONTROL ENCLOSURES

INCREASED SAFETY ENCLOSURES

CN Series - Control Enclosure 316L Stainless Steel

| ENCLOSURE | GAUGE | | OUTSIDE DIM. | | | STIFFENERS | | CLAMPS # | MOUNTING CENTER | | PANEL PART NO. | PANEL DIM. | |
|--------------|-------|------|--------------|----|----|------------|-------|----------|-----------------|----|----------------|------------|----|
| | BOX | DOOR | A | B | C | BOX | DOOR | | | | | X | Y |
| CN4X6-202010 | 14 | 14 | 20 | 20 | 10 | - | - | 4 | 22.13 | 14 | V2020 | 17 | 17 |
| CN4X6-242010 | 14 | 14 | 24 | 20 | 10 | - | - | 5 | 26.13 | 14 | V2420 | 21 | 17 |
| CN4X6-242410 | 14 | 14 | 24 | 24 | 10 | - | - | 5 | 26.13 | 18 | V2424 | 21 | 21 |
| CN4X6-302410 | 14 | 14 | 30 | 24 | 10 | - | - | 5 | 32.13 | 18 | V3024 | 27 | 21 |
| CN4X6-362410 | 14 | 14 | 36 | 24 | 10 | - | - | 5 | 38.13 | 18 | V3624 | 33 | 21 |
| CN4X6-363010 | 14 | 14 | 36 | 30 | 10 | REQ'D | - | 7 | 38.13 | 24 | V3630 | 33 | 27 |
| CN4X6-423010 | 14 | 14 | 42 | 30 | 10 | REQ'D | REQ'D | 8 | 44.13 | 24 | V4230 | 39 | 27 |
| CN4X6-423610 | 14 | 14 | 42 | 36 | 10 | REQ'D | REQ'D | 8 | 44.13 | 30 | V4236 | 39 | 33 |
| CN4X6-483610 | 14 | 14 | 48 | 36 | 10 | REQ'D | REQ'D | 8 | 50.13 | 30 | V4836 | 45 | 33 |
| CN4X6-603610 | 14 | 14 | 60 | 36 | 10 | REQ'D | REQ'D | 9 | 62.13 | 30 | V6036 | 57 | 33 |
| CN4X6-201612 | 14 | 14 | 20 | 16 | 12 | - | - | 4 | 22.13 | 10 | V2016 | 17 | 13 |
| CN4X6-242012 | 14 | 14 | 24 | 20 | 12 | - | - | 5 | 26.13 | 14 | V2420 | 21 | 17 |
| CN4X6-242412 | 14 | 14 | 24 | 24 | 12 | - | - | 5 | 26.13 | 18 | V2424 | 21 | 21 |
| CN4X6-302412 | 14 | 14 | 30 | 24 | 12 | - | - | 5 | 32.13 | 18 | V3024 | 27 | 21 |
| CN4X6-303012 | 14 | 14 | 30 | 30 | 12 | REQ'D | - | 7 | 32.13 | 24 | V3030 | 27 | 27 |
| CN4X6-362412 | 14 | 14 | 36 | 24 | 12 | - | - | 5 | 38.13 | 18 | V3624 | 33 | 21 |
| CN4X6-363012 | 14 | 14 | 36 | 30 | 12 | REQ'D | - | 7 | 38.13 | 24 | V3630 | 33 | 27 |
| CN4X6-363612 | 14 | 14 | 36 | 36 | 12 | REQ'D | REQ'D | 7 | 38.13 | 30 | V3636 | 33 | 33 |
| CN4X6-423012 | 14 | 14 | 42 | 30 | 12 | REQ'D | REQ'D | 8 | 44.13 | 24 | V4230 | 39 | 27 |
| CN4X6-423612 | 14 | 14 | 42 | 36 | 12 | REQ'D | REQ'D | 8 | 44.13 | 30 | V4236 | 39 | 33 |
| CN4X6-483612 | 14 | 14 | 48 | 36 | 12 | REQ'D | REQ'D | 8 | 50.13 | 30 | V4836 | 45 | 33 |
| CN4X6-603612 | 14 | 14 | 60 | 36 | 12 | REQ'D | REQ'D | 9 | 62.13 | 30 | V6036 | 57 | 33 |
| CN4X6-242016 | 14 | 14 | 24 | 20 | 16 | - | - | 5 | 26.13 | 14 | V2420 | 21 | 17 |
| CN4X6-242416 | 14 | 14 | 24 | 24 | 16 | - | - | 5 | 26.13 | 18 | V2424 | 21 | 21 |
| CN4X6-302416 | 14 | 14 | 30 | 24 | 16 | - | - | 5 | 32.13 | 18 | V3024 | 27 | 21 |
| CN4X6-363016 | 14 | 14 | 36 | 30 | 16 | REQ'D | - | 7 | 38.13 | 24 | V3630 | 33 | 27 |
| CN4X6-423616 | 14 | 14 | 42 | 36 | 16 | REQ'D | REQ'D | 8 | 44.13 | 30 | V4236 | 39 | 33 |
| CN4X6-483616 | 14 | 14 | 48 | 36 | 16 | REQ'D | REQ'D | 8 | 50.13 | 30 | V4836 | 45 | 33 |
| CN4X6-603616 | 14 | 14 | 60 | 36 | 16 | REQ'D | REQ'D | 9 | 62.13 | 30 | V6036 | 57 | 33 |
| CN4X6-302420 | 14 | 14 | 30 | 24 | 20 | - | - | 5 | 32.13 | 18 | V3024 | 27 | 21 |
| CN4X6-363020 | 14 | 14 | 36 | 30 | 20 | REQ'D | - | 7 | 38.13 | 24 | V3630 | 33 | 27 |
| CN4X6-483620 | 14 | 14 | 48 | 36 | 20 | REQ'D | REQ'D | 8 | 50.13 | 30 | V4836 | 45 | 33 |
| CN4X6-603620 | 14 | 14 | 60 | 36 | 20 | REQ'D | REQ'D | 9 | 62.13 | 30 | V6036 | 57 | 33 |
| CN4X6-302424 | 14 | 14 | 30 | 24 | 24 | - | - | 5 | 32.13 | 18 | V3024 | 27 | 21 |

Information is subject to change without notice

Measurements in inches

- NOTES**
- For stainless steel 304 constructions, substitute CN4X6 (SS316L Prefix) with CN4X (SS304 Prefix).
 - Gland plate options area available on enclosure < 12 inches deep, consult factory for gland plates on enclosures > 10 inches deep.

Add the following suffixes for gland plates:

- A: Gland plate installed on TOP side of box
- B: Gland plate installed on BOTTOM side of box
- C: Gland plate installed on LEFT side of box
- D: Gland plate installed on RIGHT side of box

For multiple gland plates omit dashes. (i.e. CN4X6-161608-ABCD)

SEND ORDERS TO ORDERS@ADALET.COM

T: 216.267.9000 | F: 216.267.1681 | info@adalet.com

©Adalet

INCHES

CONTROL ENCLOSURES

INCREASED SAFETY ENCLOSURES

METRIC¹

| CN Series - Control Enclosure 316L Stainless Steel | | | | | | | | | | | | | |
|--|-------|------|--------------|-------|-------|------------|-------|----------|------------|-------|----------------|------------|-------|
| ENCLOSURE | GAUGE | | OUTSIDE DIM. | | | STIFFENERS | | CLAMPS # | MTG CENTER | | PANEL PART NO. | PANEL DIM. | |
| | BOX | DOOR | A | B | C | BOX | DOOR | | F | G | | X | Y |
| CN4X6-161206 | 16 | 14 | 406.4 | 304.8 | 152.4 | - | - | 4 | 18.13 | 241.3 | V1612 | 330.2 | 228.6 |
| CN4X6-161606 | 16 | 14 | 406.4 | 406.4 | 152.4 | - | - | 4 | 18.13 | 254.0 | V1616 | 330.2 | 330.2 |
| CN4X6-162006 | 16 | 14 | 406.4 | 508.0 | 152.4 | - | - | 4 | 18.13 | 355.6 | V2016 | 330.2 | 431.8 |
| CN4X6-201606 | 16 | 14 | 508.0 | 406.4 | 152.4 | - | - | 4 | 22.13 | 254.0 | V2016 | 431.8 | 330.2 |
| CN4X6-202006 | 16 | 14 | 508.0 | 508.0 | 152.4 | - | - | 4 | 22.13 | 355.6 | V2020 | 431.8 | 431.8 |
| CN4X6-202406 | 16 | 14 | 508.0 | 609.6 | 152.4 | - | - | 4 | 22.13 | 457.2 | V2420 | 431.8 | 533.4 |
| CN4X6-241206 | 16 | 14 | 609.6 | 304.8 | 152.4 | - | - | 5 | 26.13 | 241.3 | V2412 | 533.4 | 228.6 |
| CN4X6-241606 | 16 | 14 | 609.6 | 406.4 | 152.4 | - | - | 5 | 26.13 | 254.0 | V2416 | 533.4 | 330.2 |
| CN4X6-242006 | 16 | 14 | 609.6 | 508.0 | 152.4 | - | - | 5 | 26.13 | 355.6 | V2420 | 533.4 | 431.8 |
| CN4X6-242406 | 16 | 14 | 609.6 | 609.6 | 152.4 | - | - | 5 | 26.13 | 457.2 | V2424 | 533.4 | 533.4 |
| CN4X6-302006 | 14 | 14 | 762.0 | 508.0 | 152.4 | - | - | 5 | 32.13 | 355.6 | V3020 | 685.8 | 431.8 |
| CN4X6-302406 | 14 | 14 | 762.0 | 609.6 | 152.4 | - | - | 5 | 32.13 | 457.2 | V3024 | 685.8 | 533.4 |
| CN4X6-362406 | 14 | 14 | 914.4 | 609.6 | 152.4 | - | - | 5 | 38.13 | 457.2 | V3624 | 838.2 | 533.4 |
| CN4X6-363006 | 14 | 14 | 914.4 | 762.0 | 203.2 | REQ'D | - | 7 | 38.13 | 609.6 | V3630 | 838.2 | 685.8 |
| CN4X6-161208 | 16 | 14 | 406.4 | 304.8 | 203.2 | - | - | 4 | 18.13 | 241.3 | V1612 | 330.2 | 228.6 |
| CN4X6-161608 | 16 | 14 | 406.4 | 406.4 | 203.2 | - | - | 4 | 18.13 | 254.0 | V1616 | 330.2 | 330.2 |
| CN4X6-162008 | 16 | 14 | 406.4 | 508.0 | 203.2 | - | - | 4 | 18.13 | 355.6 | V1620 | 330.2 | 431.8 |
| CN4X6-201608 | 16 | 14 | 508.0 | 406.4 | 203.2 | - | - | 4 | 22.13 | 254.0 | V2016 | 431.8 | 330.2 |
| CN4X6-202008 | 16 | 14 | 508.0 | 508.0 | 203.2 | - | - | 4 | 22.13 | 355.6 | V2020 | 431.8 | 431.8 |
| CN4X6-202408 | 16 | 14 | 508.0 | 609.6 | 203.2 | - | - | 4 | 22.13 | 457.2 | V2024 | 431.8 | 533.4 |
| CN4X6-241608 | 16 | 14 | 609.6 | 406.4 | 203.2 | - | - | 5 | 26.13 | 254.2 | V2416 | 533.4 | 330.2 |
| CN4X6-242008 | 16 | 14 | 609.6 | 508.0 | 203.2 | - | - | 5 | 26.13 | 355.6 | V2420 | 533.4 | 431.8 |
| CN4X6-242408 | 16 | 14 | 609.6 | 609.6 | 203.2 | - | - | 5 | 26.13 | 457.2 | V2424 | 533.4 | 533.4 |
| CN4X6-243008 | 14 | 14 | 609.6 | 762.0 | 203.2 | - | - | 7 | 26.13 | 609.6 | V3024 | 533.4 | 685.8 |
| CN4X6-302008 | 14 | 14 | 762.0 | 508.0 | 203.2 | - | - | 5 | 32.13 | 355.6 | V3020 | 685.8 | 431.8 |
| CN4X6-302408 | 14 | 14 | 762.0 | 609.6 | 203.2 | - | - | 5 | 32.13 | 457.2 | V3024 | 685.8 | 533.4 |
| CN4X6-303008 | 14 | 14 | 762.0 | 762.0 | 203.2 | REQ'D | - | 7 | 32.13 | 609.6 | V3030 | 685.8 | 685.8 |
| CN4X6-362408 | 14 | 14 | 914.4 | 609.6 | 203.2 | - | - | 5 | 38.13 | 457.2 | V3624 | 838.2 | 533.4 |
| CN4X6-363008 | 14 | 14 | 914.4 | 762.0 | 203.2 | REQ'D | - | 7 | 38.13 | 609.6 | V3630 | 838.2 | 685.8 |
| CN4X6-363608 | 14 | 14 | 914.4 | 914.4 | 203.2 | REQ'D | REQ'D | 7 | 38.13 | 762.0 | V3636 | 838.2 | 838.2 |
| CN4X6-423008 | 14 | 14 | 1066.8 | 762.0 | 203.2 | REQ'D | REQ'D | 8 | 44.13 | 609.6 | V4230 | 990.6 | 685.8 |
| CN4X6-423608 | 14 | 14 | 1066.8 | 914.4 | 203.2 | REQ'D | REQ'D | 8 | 44.13 | 762.0 | V4236 | 990.6 | 838.2 |
| CN4X6-483608 | 14 | 14 | 1219.2 | 914.4 | 203.2 | REQ'D | REQ'D | 8 | 50.13 | 762.0 | V4836 | 1143.0 | 838.2 |
| CN4X6-201610 | 16 | 14 | 508.0 | 406.4 | 254.0 | - | - | 4 | 22.13 | 254.0 | V2016 | 431.8 | 330.2 |

Information is subject to change without notice

Measurements in inches

- NOTES**
1. For stainless steel 304 constructions, substitute CN4X6 (SS316L Prefix) with CN4X (SS304 Prefix).
 2. Gland plate options area available on enclosure < 12 inches deep, consult factory for gland plates on enclosures > 10 inches deep.

Add the following suffixes for gland plates:

- A: Gland plate installed on TOP side of box
- B: Gland plate installed on BOTTOM side of box
- C: Gland plate installed on LEFT side of box
- D: Gland plate installed on RIGHT side of box

For multiple gland plates omit dashes. (i.e. CN4X6-161608-ABCD)

CN Series - Control Enclosure 316L Stainless Steel

| ENCLOSURE | GAUGE | | OUTSIDE DIM. | | | STIFFENERS | | CLAMPS # | MOUNTING CENTER | | PANEL PART NO. | PANEL DIM. | |
|--------------|-------|------|--------------|-------|-------|------------|-------|----------|-----------------|-------|----------------|------------|-------|
| | BOX | DOOR | A | B | C | BOX | DOOR | | X | Y | | | |
| CN4X6-202010 | 14 | 14 | 508.0 | 508.0 | 254.0 | - | - | 4 | 22.13 | 355.6 | V2020 | 431.8 | 431.8 |
| CN4X6-242010 | 14 | 14 | 609.6 | 508.0 | 254.0 | - | - | 5 | 26.13 | 355.6 | V2420 | 533.4 | 431.8 |
| CN4X6-242410 | 14 | 14 | 609.6 | 609.6 | 254.0 | - | - | 5 | 26.13 | 457.2 | V2424 | 533.4 | 533.4 |
| CN4X6-302410 | 14 | 14 | 762.0 | 609.6 | 254.0 | - | - | 5 | 32.13 | 457.2 | V3024 | 685.8 | 533.4 |
| CN4X6-362410 | 14 | 14 | 914.4 | 609.6 | 254.0 | - | - | 5 | 38.13 | 457.2 | V3624 | 838.2 | 533.4 |
| CN4X6-363010 | 14 | 14 | 914.4 | 762.0 | 254.0 | REQ'D | - | 7 | 38.13 | 609.6 | V3630 | 838.2 | 685.8 |
| CN4X6-423010 | 14 | 14 | 1066.8 | 762.0 | 254.0 | REQ'D | REQ'D | 8 | 44.13 | 609.6 | V4230 | 990.6 | 685.8 |
| CN4X6-423610 | 14 | 14 | 1066.8 | 914.4 | 254.0 | REQ'D | REQ'D | 8 | 44.13 | 762.0 | V4236 | 990.6 | 838.2 |
| CN4X6-483610 | 14 | 14 | 1219.2 | 914.4 | 254.0 | REQ'D | REQ'D | 8 | 50.13 | 762.0 | V4836 | 1143.0 | 838.2 |
| CN4X6-603610 | 14 | 14 | 1524.0 | 914.4 | 254.0 | REQ'D | REQ'D | 9 | 62.13 | 762.0 | V6036 | 1447.8 | 838.2 |
| CN4X6-201612 | 14 | 14 | 508.0 | 406.4 | 304.8 | - | - | 4 | 22.13 | 254.0 | V2016 | 431.8 | 330.2 |
| CN4X6-242012 | 14 | 14 | 609.6 | 508.0 | 304.8 | - | - | 5 | 26.13 | 355.6 | V2420 | 533.4 | 431.8 |
| CN4X6-242412 | 14 | 14 | 609.6 | 609.6 | 304.8 | - | - | 5 | 26.13 | 457.2 | V2424 | 533.4 | 533.4 |
| CN4X6-302412 | 14 | 14 | 762.0 | 609.6 | 304.8 | - | - | 5 | 32.13 | 457.2 | V3024 | 685.8 | 533.4 |
| CN4X6-303012 | 14 | 14 | 762.0 | 762.0 | 304.8 | REQ'D | - | 7 | 32.13 | 609.6 | V3030 | 685.8 | 685.8 |
| CN4X6-362412 | 14 | 14 | 914.4 | 609.6 | 304.8 | - | - | 5 | 38.13 | 457.2 | V3624 | 838.2 | 533.4 |
| CN4X6-363012 | 14 | 14 | 914.4 | 762.0 | 304.8 | REQ'D | - | 7 | 38.13 | 609.6 | V3630 | 838.2 | 685.8 |
| CN4X6-363612 | 14 | 14 | 914.4 | 914.4 | 304.8 | REQ'D | REQ'D | 7 | 38.13 | 762.0 | V3636 | 838.2 | 838.2 |
| CN4X6-423012 | 14 | 14 | 1066.8 | 762.0 | 304.8 | REQ'D | REQ'D | 8 | 44.13 | 609.6 | V4230 | 990.6 | 685.8 |
| CN4X6-423612 | 14 | 14 | 1066.8 | 914.4 | 304.8 | REQ'D | REQ'D | 8 | 44.13 | 762.0 | V4236 | 990.6 | 838.2 |
| CN4X6-483612 | 14 | 14 | 1219.2 | 914.4 | 304.8 | REQ'D | REQ'D | 8 | 50.13 | 762.0 | V4836 | 1143.0 | 838.2 |
| CN4X6-603612 | 14 | 14 | 1524.0 | 914.4 | 304.8 | REQ'D | REQ'D | 9 | 62.13 | 762.0 | V6036 | 1447.8 | 838.2 |
| CN4X6-242016 | 14 | 14 | 609.6 | 508.0 | 406.4 | - | - | 5 | 26.13 | 355.6 | V2420 | 533.4 | 431.8 |
| CN4X6-242416 | 14 | 14 | 609.6 | 609.6 | 406.4 | - | - | 5 | 26.13 | 457.2 | V2424 | 533.4 | 533.4 |
| CN4X6-302416 | 14 | 14 | 762.0 | 609.6 | 406.4 | - | - | 5 | 32.13 | 457.2 | V3024 | 685.8 | 533.4 |
| CN4X6-363016 | 14 | 14 | 914.4 | 762.0 | 406.4 | REQ'D | - | 7 | 38.13 | 609.6 | V3630 | 838.2 | 685.8 |
| CN4X6-423616 | 14 | 14 | 1066.8 | 914.4 | 406.4 | REQ'D | REQ'D | 8 | 44.13 | 762.0 | V4236 | 990.6 | 838.2 |
| CN4X6-483616 | 14 | 14 | 1219.2 | 914.4 | 406.4 | REQ'D | REQ'D | 8 | 50.13 | 762.0 | V4836 | 1143.0 | 838.2 |
| CN4X6-603616 | 14 | 14 | 1524.0 | 914.4 | 406.4 | REQ'D | REQ'D | 9 | 62.13 | 762.0 | V6036 | 1447.8 | 838.2 |
| CN4X6-302420 | 14 | 14 | 762.0 | 609.6 | 508.0 | - | - | 5 | 32.13 | 457.2 | V3024 | 685.8 | 533.4 |
| CN4X6-363020 | 14 | 14 | 914.4 | 762.0 | 508.0 | REQ'D | - | 7 | 38.13 | 609.6 | V3630 | 838.2 | 685.8 |
| CN4X6-483620 | 14 | 14 | 1219.2 | 914.4 | 508.0 | REQ'D | REQ'D | 8 | 50.13 | 762.0 | V4836 | 1143.0 | 838.2 |
| CN4X6-603620 | 14 | 14 | 1524.0 | 914.4 | 508.0 | REQ'D | REQ'D | 9 | 62.13 | 762.0 | V6036 | 1447.8 | 838.2 |
| CN4X6-302424 | 14 | 14 | 762.0 | 609.6 | 508.0 | - | - | 5 | 32.13 | 457.2 | V3024 | 685.8 | 533.4 |

Information is subject to change without notice

Measurements in inches

- NOTES**
1. For stainless steel 304 constructions, substitute CN4X6 (SS316L Prefix) with CN4X (SS304 Prefix).
 2. Gland plate options area available on enclosure < 12 inches deep, consult factory for gland plates on enclosures > 10 inches deep.

Add the following suffixes for gland plates:

- A: Gland plate installed on TOP side of box
- B: Gland plate installed on BOTTOM side of box
- C: Gland plate installed on LEFT side of box
- D: Gland plate installed on RIGHT side of box

For multiple gland plates omit dashes. (i.e. CN4X6-161608-ABCD)

METRIC¹

Selector Switches

SELECTOR SWITCH

| CAT # | CAM | # POS. | TYPE |
|-------|-----|--------|--|
| EHSS | 1 | 2 | 2 POSITION - Maintained |
| EHSS | 2-6 | 3 | 3 POSITION - Maintained |
| EHSC | 2-6 | 3 | Spring return center from right and left |
| EHSR2 | 1 | 2 | Spring return to left from right |
| EHSR | 2-6 | 3 | Spring return center from right, maintain left |
| EHSL2 | 1 | 2 | Spring return to right from left |
| EHSL | 2-6 | 3 | Spring return center from left, maintain right |



KEYED SELECTOR SWITCH

| CAT # | CAM | # POS. | TYPE |
|--------|-----|--------|--|
| EHKSS | 1 | 2 | 2 POSITION - Maintained |
| EHKSS | 2-6 | 3 | 3 POSITION - Maintained |
| EHKSC | 2-6 | 3 | Spring return center from right and left |
| EHKSR2 | 1 | 2 | Spring return to left from right |
| EHKSR | 2-6 | 3 | Spring return center from right, maintain left |
| EHKSL2 | 1 | 2 | Spring return to right from left |
| EHKSL | 2-6 | 3 | Spring return center from left, maintain right |



CONTACT SEQUENCE CHART

| Circuit of Contact Block | Mounting Position | Cam 1 Contact Sequence | Cam 2 Contact Sequence | Cam 3 Contact Sequence | Cam 4 Contact Sequence | Cam 5 Contact Sequence | Cam 6 Contact Sequence |
|--|-------------------|------------------------|------------------------|------------------------|------------------------|------------------------|------------------------|
| O = Contact Open X = Contact Closed | | | | | | | |
| Normally Closed (NC) | A | X O | XX O | XX O | X O X | O O X | O O X |
| Normally Open (NO) | A | O X | O O X | O O X | O X O | X X O | O X O |
| Normally Closed (NC) | B | X O | O X O | O X X | X O O | O X X | X O O |
| Normally Open (NO) | B | O X | X O X | X O O | O X X | X O O | O O X |

CERTIFICATIONS

Class I, Division 2, Groups A, B, C, D
 Class II, Groups E, F, G (Canada Only)
 Class I, Zone 1, AEx de IIC T6 -55°C < Ta < +60°C
 Ex de IIC T6 X -55°C < Ta < +60°C
 IECEx Ex de IIC Gb -55°C < Ta < +60°C
 IECEx UL.09.0002U

0539 II 2 G Ex e II T6 (T5: Ta < +55°C) (T4: Ta < +70°C)
 0539 II 2 D Ex tD A21 IP66 T200°C
 IECEx Ex tb IIIC Db IP66
 DIP
 DIP A21 T_AT6



- NOTE**
1. Adalet EBT contact blocks are 1NO / 1NC Standard
 2. A max of 2 blocks per operator
 3. 1 EBT contact block is standard

Pilot Lights



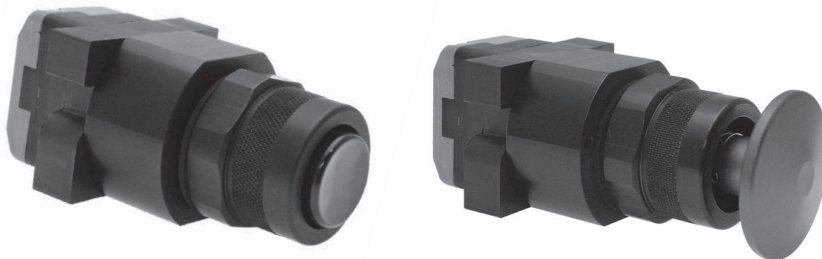
| PILOT LIGHTS | | | |
|-------------------------|----------------------|-------|---------|
| 8" FLEXIBLE LEADS CAT # | TERMINAL BLOCK CAT # | COLOR | VOLTAGE |
| ELA120 | ELAT120 | AMBER | 120 |
| ELG120 | ELGT120 | GREEN | 120 |
| ELR120 | ELRT120 | RED | 120 |
| ELW120 | ELWT120 | WHITE | 120 |
| ELA12 | ELAT12 | AMBER | 12 |
| ELG12 | ELGT12 | GREEN | 12 |
| ELR12 | ELRT12 | RED | 12 |
| ELW12 | ELWT12 | WHITE | 12 |
| ELA24 | ELAT24 | AMBER | 24 |
| ELG24 | ELGT24 | GREEN | 24 |
| ELR24 | ELRT24 | RED | 24 |
| ELW24 | ELWT24 | WHITE | 24 |

INCREASED SAFETY ENCLOSURES

CERTIFICATIONS

Class I, Division 2, Groups A, B, C, D
 Class II, Groups E, F, G (Canada Only)
 Class I, Zone 1, AEx de IIC T6 -55°C ≤ Ta ≤ +60°C
 Ex de IIC T6 X -55°C ≤ Ta ≤ +60°C
 IECEx Ex de IIC Gb -55°C ≤ Ta ≤ +60°C
 IECEx UL.09.0002U

0539 Ⓜ II 2 G Ex e II T6 (T5: Ta ≤ +55°C) (T4: Ta ≤ +70°C)
 0539 Ⓜ II 2 D Ex tD A21 IP66 T200°C
 IECEx Ex tb IIIC Db IP66
 DIP
 DIP A21 T_AT6



Pushbuttons

| PUSHBUTTON | | |
|------------|-----------|--------------|
| CAT # | CAP COLOR | BUTTON COLOR |
| EHPB-B | BLACK | BLACK |
| EHPB-G | BLACK | GREEN |
| EHPB-R | BLACK | RED |

| MUSHROOM HEAD PUSHBUTTON | | |
|--------------------------|-----------|-----------|
| CAT # | CAP COLOR | STYLE |
| EHPBM-R | RED | MOMENTARY |
| EHPBM-B | BLACK | MOMENTARY |
| EHPPM | RED | PUSH/PULL |

CERTIFICATIONS

Class I, Division 2, Groups A, B, C, D
 Class II, Groups E, F, G (Canada Only)
 Class I, Zone 1, AEx de IIC T6 -55°C ≤ Ta ≤ +60°C
 Ex de IIC T6 X -55°C ≤ Ta ≤ +60°C
 IECEx Ex de IIC Gb -55°C ≤ Ta ≤ +60°C
 IECEx UL.09.0002U

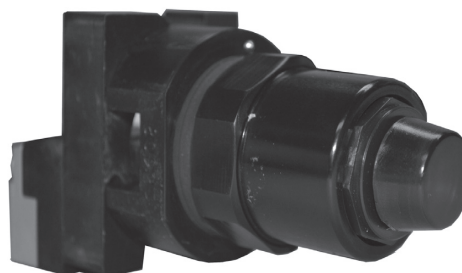
0539 Ⓜ II 2 G Ex e II T6 (T5: Ta ≤ +55°C) (T4: Ta ≤ +70°C)
 0539 Ⓜ II 2 D Ex tD A21 IP66 T200°C
 IECEx Ex tb IIIC Db IP66
 DIP
 DIP A21 T_AT6



Illuminated Pushbutton

ILLUMINATED PUSH BUTTON OPERATORS WITH CONTACT BLOCK

| CAT. NUMBER | COLOR | VOLTAGE AC/DC | WATTS |
|-------------|-------|---------------|-------|
| ELPA120 | AMBER | 120 | 1.50 |
| ELPG120 | GREEN | 120 | 1.50 |
| ELPR120 | RED | 120 | 1.50 |
| ELPW120 | WHITE | 120 | 1.50 |
| ELPA12 | AMBER | 12 | .30 |
| ELPG12 | GREEN | 12 | .30 |
| ELPR12 | RED | 12 | .30 |
| ELPW12 | WHITE | 12 | .30 |
| ELPA24 | AMBER | 24 | .60 |
| ELPG24 | GREEN | 24 | .60 |
| ELPR24 | RED | 24 | .60 |
| ELPW24 | WHITE | 24 | .60 |



CERTIFICATIONS

Class I, Division 2, Groups A, B, C, D
 Class II, Groups E, F, G (Canada Only)
 NEMA Type 4, 4X, 12, 13
 Class I, Zone 1, AEx d e mb IIC T6 -55°C < Tamb < +60°C
 Ex d e mb IIC -55°C < Tamb < +60°C (Canada)
 IECEx Ex d e mb IIC -55°C < Tamb < +60°C
 IECEx UL 11.0013U

IECEX Ex tD A21 IP66
 DEMKO 11 ATEX 1005210U
 CE 0539 II 2 G Ex e II T6 (T5: Ta < +55°C) (T4: Ta < +70°C)
 CE 0539 II 2 D Ex tD A21 IP66 T200°C
 DIP
 DIP A21 T_AT6 X



CABLE GLANDS

Adalet offers a variety of cable glands and fittings used in hazardous location applications. Available in brass, nickel plated brass, or stainless steel, the cable glands are for use in hazardous areas within the oil & gas, petrochemical, and marine applications. These fittings carry global certifications and are available in various gland sizes for metric and NPT threads. Available for both Exd and Exe applications, the cable glands can be equipped with various options such as special threads, seals, and plating.



*Consult factory for details

