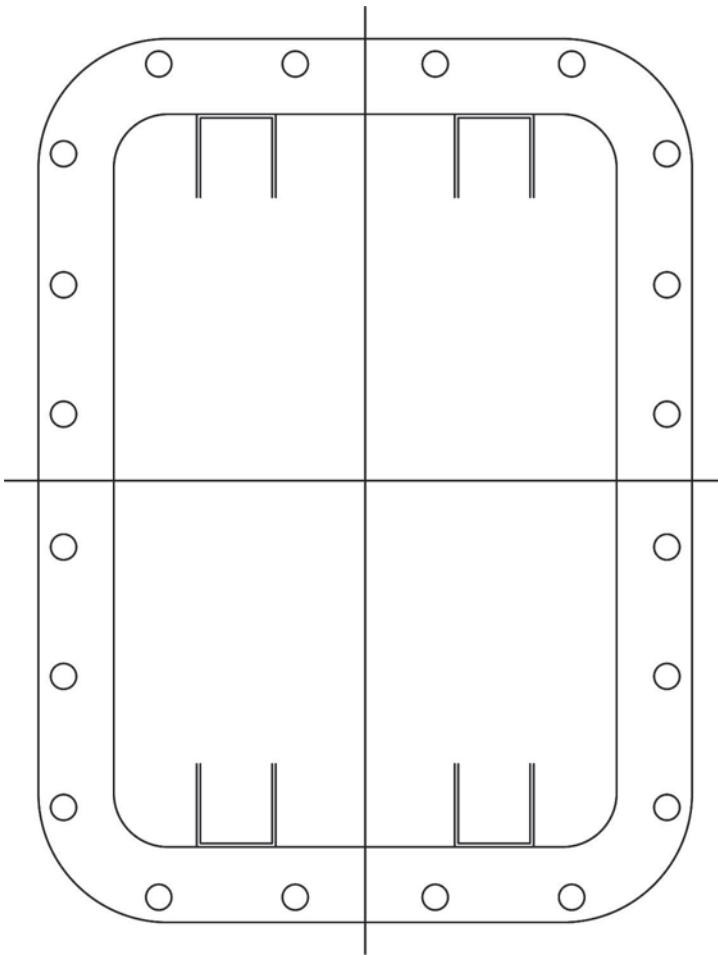


Customer Design Sheets

Cover Layout



DIMENSION ALL MODIFICATIONS
FROM CENTER LINES OF COVER

ATEX /IEC
DEMKO U Cert.
REF. DS483

UL
UL APPROVED
REF. DS361 & B301

CSA
CSA APPROVED
REF. DS327 & B301

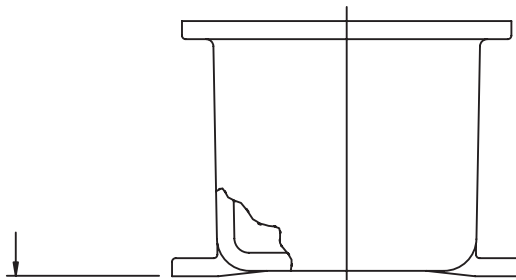
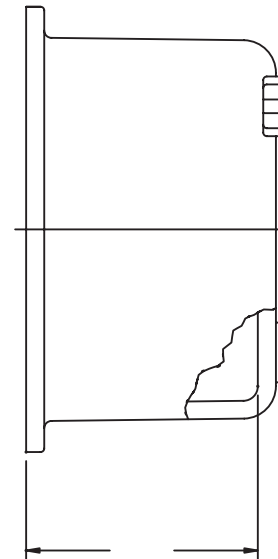
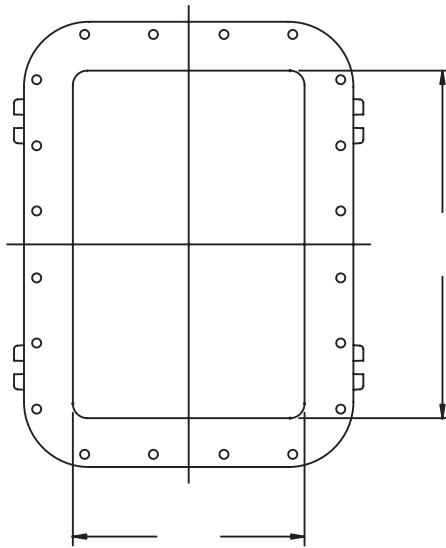
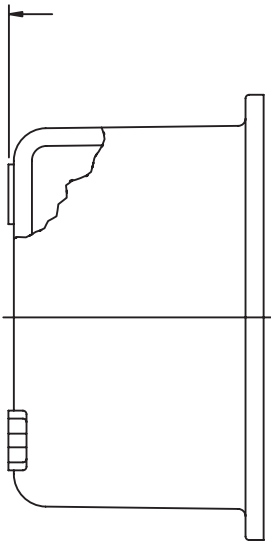
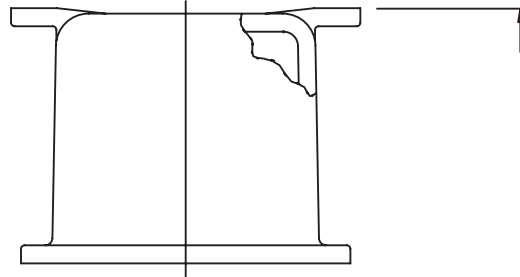
HINGES
 LEFT HAND
 RIGHT HAND
 LONG SIDE
 SHORT SIDE
 NON REMOVABLE

NEMA 4/ IP66
N4 GROOVE

CAT #: X _____

Customer Design Sheets

Box Layout



ATEX (CENELEC)/IEC

- DEMKO U Cert.
REF. DS483

UL

- UL APPROVED
REF. DS248 & B301

CSA

- CSA APPROVED
REF. B301

MTG. PANS

- XSA PAN
- XSB PAN
- XSM PAN

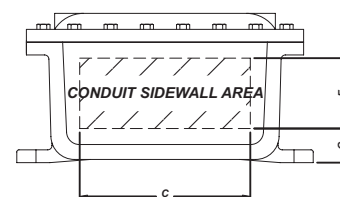
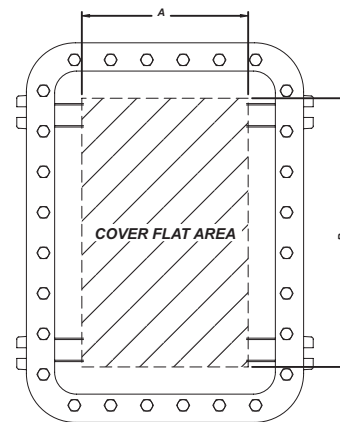
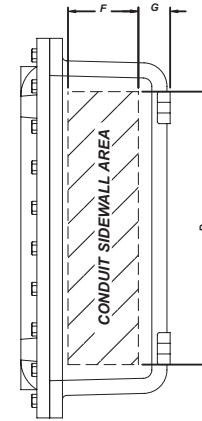
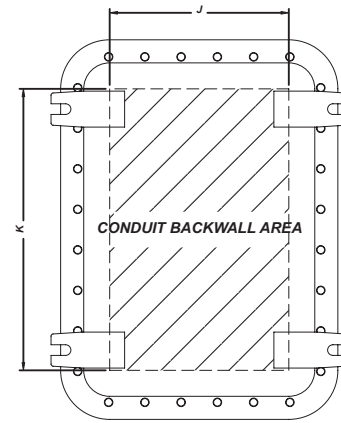
HINGES

- LEFT HAND
- RIGHT HAND
- LONG SIDE
- SHORT SIDE
- NON REMOVABLE

DIMENSION ALL MODIFICATIONS FROM CENTER LINES AND BOTTOM OF MOUNTING LUGS WHENEVER POSSIBLE.

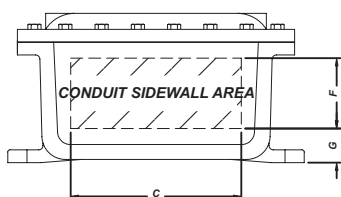
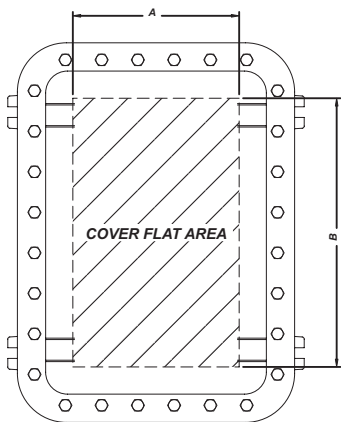
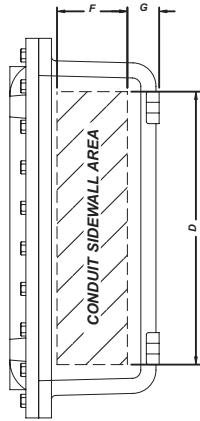
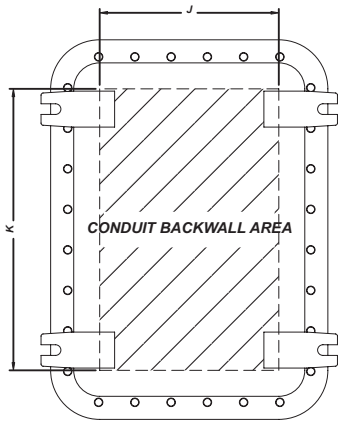
Cover & Sidewall Area

Enclosure Series	COVER FLAT		CONDUIT - SIDEWALL				BACKWALL	
	A	B	C	D	F	G	J	K
041604	2 1/8	14 1/8	2 11/16	14 11/16	2 7/8	1	3 1/8	15 1/8
060804	3 7/8	5 7/8	4 11/16	6 11/16	2 7/8	1	5 1/8	7 1/8
060805	3 7/8	5 7/8	4 5/8	6 5/8	3 7/8	1	5 1/16	7 1/16
060806	3 7/8	5 7/8	4 9/16	6 9/16	4 7/8	1	4 15/16	6 15/16
061105	3 7/8	8 7/8	4 5/8	9 5/8	3 3/8	1	5 1/8	10 1/8
061204	3 7/8	9 7/8	4 11/16	10 11/16	2 7/8	1	5 1/8	11 1/8
061206	3 7/8	9 7/8	4 9/16	10 9/16	4 9/16	1 5/16	4 7/16	10 7/16
061305	3 7/8	10 7/8	4 5/8	11 5/8	3 5/8	1	5 1/8	12 1/8
071004	4 7/8	7 7/8	5 5/8	8 5/8	2 1/2	1 3/8	5 5/8	8 5/8
071006	4 7/8	7 7/8	5 9/16	8 9/16	4 5/8	1 3/8	5 9/16	8 9/16
071805	5	16 1/4	5 7/16	16 11/16	3 1/2	1 3/8	5 7/16	16 11/16
080804	5 7/8	5 7/8	6 5/8	6 5/8	2 11/16	1 1/8	7 1/8	7 1/8
080806	5 7/8	5 7/8	6 9/16	6 9/16	4 11/16	1 1/8	7 1/16	7 1/16
080808	5 7/8	5 7/8	6 7/16	6 7/16	6 11/16	1 1/8	6 15/16	6 15/16
081004	5 7/8	7 7/8	6 5/8	8 5/8	2 1/2	1 3/8	6 5/8	8 5/8
081006	5 7/8	7 7/8	6 9/16	8 9/16	4 1/2	1 3/8	6 9/16	8 9/16
081008	5 7/8	7 7/8	6 7/16	8 7/16	6 1/2	1 3/8	6 7/16	8 7/16
081204	5 7/8	9 7/8	6 5/8	10 5/8	2 1/2	1 3/8	6 5/8	10 5/8
081206	5 7/8	9 7/8	6 9/16	10 9/16	4 1/2	1 3/8	6 9/16	10 9/16
081208	5 7/8	9 7/8	6 7/16	10 7/16	6 1/2	1 3/8	6 7/16	10 7/16
091105	6 7/8	8 7/8	7 5/16	9 5/16	3 3/8	1 9/16	7 5/16	9 5/16
101004	7 7/8	7 7/8	8 3/8	8 3/8	2 3/8	1 9/16	8 3/8	8 3/8
101006	7 7/8	7 7/8	8 5/16	8 5/16	4 3/8	1 9/16	8 5/16	8 5/16
101008	7 7/8	7 7/8	8 3/16	8 3/16	6 3/8	1 9/16	8 3/16	8 3/16
101206	7 3/4	9 3/4	8 1/4	10 1/4	4 5/8	1 9/16	8 1/4	10 1/4
101404	7 7/8	11 7/8	8 3/8	12 3/8	2 3/8	1 9/16	8 3/8	12 3/8
101406	7 7/8	11 7/8	8 5/16	12 5/16	4 3/8	1 9/16	8 5/16	12 5/16
101406	7 7/8	11 7/8	8 1/4	12 1/4	6 1/4	1 3/4	7 5/8	11 5/8
101408	7 7/8	11 7/8	8 1/16	12 1/16	6 1/4	1 3/4	7 5/8	11 5/8
121204	9 3/4	9 3/4	10	10	2 1/8	1 7/8	10	10
121206	9 3/4	9 3/4	9 13/16	9 13/16	4 1/8	1 7/8	9 13/16	9 13/16
121208	9 3/4	9 3/4	9 11/16	9 11/16	6 1/8	1 7/8	9 11/16	9 11/16
121804	9 3/4	15 3/4	10 1/8	16 1/8	2 1/8	1 7/8	10 1/8	16 1/8
121806	9 3/4	15 3/4	9 13/16	15 13/16	4 1/8	1 7/8	9 13/16	15 13/16
121808	9 3/4	15 3/4	9 11/16	15 11/16	6 1/8	1 7/8	9 11/16	15 11/16
122005	9 3/4	17 3/4	10 1/16	18 1/16	3 3/16	2	10 1/16	18 1/16
122404	9 5/8	21 5/8	10 1/8	22 1/8	2 1/8	2	10 1/8	22 1/8



EXPLOSIONPROOF
XCE/XJF Enclosures

Cover & Sidewall Area



Enclosure Series	COVER FLAT		CONDUIT - SIDEWALL				BACKWALL	
	A	B	C	D	F	G	J	K
122408	9 5/8	21 5/8	9 15/16	21 15/16	6 1/8	2	9 15/16	21 15/16
122410	9 5/8	21 5/8	9 13/16	21 13/16	8 1/8	2	9 13/16	21 13/16
123006	9 5/8	27 7/8	10 1/16	28 1/16	4	2 5/8	10 1/16	28 1/16
123604	9 5/8	33 7/8	10 1/8	34 1/8	2	2 3/8	10 1/8	34 1/8
123606	9 5/8	33 7/8	10 1/16	34 1/16	4	2 3/8	10 1/16	34 1/16
123608	9 5/8	33 7/8	9 15/16	33 15/16	6	2 3/8	9 15/16	33 15/16
124608	9 5/8	42 1/4	9 7/16	43 7/16	5 5/8	2 11/16	9 3/16	43 3/16
141404	11	11	12 1/8	12 1/18	1 3/4	2 1/8	11 5/8	11 5/8
141406	11	11	12 1/16	12 1/16	3 3/4	2 1/8	11 9/16	11 9/16
141408	11	11	11 15/16	11 15/16	5 3/4	2 1/8	11 7/16	11 7/16
142806	11	25	11 5/8	25 5/8	4	2	11 5/8	25 5/8
161604	12 1/2	12 1/2	14 1/8	14 1/8	2	2 1/16	14 1/8	14 1/8
161606	12 1/2	12 1/2	14 1/16	14 1/16	4	2 1/16	14 1/16	14 1/16
161608	12 1/2	12 1/2	13 15/16	13 15/16	6	2 1/16	13 15/16	13 15/16
162406	12 1/2	20 1/2	13 1/2	21 1/2	3 7/8	2 5/16	13 1/2	21 1/2
162408	12 1/2	20 1/2	13 3/8	21 3/8	5 7/8	2 5/16	13 3/8	21 3/8
162410	12 1/2	20 1/2	13 1/4	21 1/4	7 7/8	2 5/16	13 1/4	21 1/4
162806	13 1/4	25 1/4	14 1/16	26 1/16	3 11/16	2 3/16	14 1/16	26 1/16
163010	13 7/8	27 7/8	14 1/2	28 1/2	8 1/4	2 1/8	13 1/2	27 1/2
163406	13 3/8	31 3/8	14 1/16	32 1/16	3 15/16	2 5/16	14 1/16	32 1/16
164610	12 1/2	42 1/4	13 7/8	43 7/8	7 7/8	2 7/16	13 7/8	43 7/8
181804	14 1/4	14 1/4	16 3/16	16 3/16	1 7/8	2 5/16	16 3/16	16 3/16
181806	14 1/4	14 1/4	16 1/16	16 1/16	3 7/8	2 5/16	16 1/16	16 1/16
181808	14 1/4	14 1/4	15 15/16	15 15/16	5 7/8	2 5/16	15 15/16	15 15/16
182406	14 1/4	20 1/4	15 7/16	21 7/16	3 7/8	2 1/2	15 7/16	21 7/16
182408	14 1/4	20 1/4	15 3/8	21 3/8	5 7/8	2 1/2	15 3/8	21 3/8
182410	14 1/4	20 1/4	15 1/4	21 1/4	7 7/8	2 1/2	15 1/4	21 1/4
183008	14 1/4	26 1/4	15 3/8	27 3/8	5 7/8	2 1/2	15 3/8	27 3/8
183608	14 1/4	32 1/4	15 3/8	33 3/8	5 7/8	2 1/2	15 3/8	33 3/8
183610	14 1/4	32 1/4	15 1/4	33 1/4	7 7/8	2 1/2	15 1/4	33 1/4
203606	16 3/8	32 3/8	17 9/16	33 9/16	3 7/8	2 7/16	17 1/2	33 3/8
203612	16 3/8	32 3/8	17 9/16	33 9/16	3 7/8	2 7/16	17 1/2	33 3/8
204806	16 3/8	44 3/8	17 3/8	45 3/8	3 7/8	2 7/16	17 1/2	45 3/8
204812	16 3/8	44 3/8	17 3/8	45 3/8	3 7/8	2 7/16	17 1/2	45 3/8
242408	20 1/4	20 1/4	20 7/8	20 7/8	5 5/8	2 9/16	20 7/8	20 7/8
242410	20 1/4	20 1/4	20 3/4	20 3/4	7 5/8	2 9/16	20 3/4	20 3/4
243008	20 1/4	26 1/4	20 5/8	26 5/8	5 7/8	2 7/16	21 3/8	27 3/8
243608	20 1/4	32 1/4	21 3/16	33 3/16	5 7/8	2 1/2	21 15/16	33 15/16
243610	20 1/4	32 1/4	21 1/8	33 1/8	7 7/8	2 3/4	20 7/8	32 7/8
323612	28 3/4	32 3/4	30	34	3 3/8	2 3/4	28 7/8	32 7/8

EXPLOSIONPROOF
XCE/XJF Enclosures

Minimum Spacing for Operators in Covers

Catalog #	STANDARD OPERATORS				MINIATURE OPERATORS				COVER WALL
	Max #	Max Rows	Max Per Row	Spacing CL to CL	Max #	Max Rows	Max Per Row	Spacing CL to CL	Thickness
XCE041604	5	5	1	2 ½	13	13	1	1	½
XCE060804	2	2	1	2 ½	8	4	2	1	½
XCE060805	2	2	1	2 ½	8	4	2	1	½
XCE060806	2	2	1	2 ½	8	4	2	1	½
XCE061105	3	3	1	2 ½	14	7	2	1	½
XCE061204	4	4	1	2 ½	16	8	2	1	⅝
XCE061206	4	4	1	2 ½	16	8	2	1	⅝
XCE061305	4	4	1	2 ½	18	9	2	1	½
XCE071004	6	3	2	2 ½	18	6	3	1	⅝
XCE071006	6	3	2	2 ½	18	6	3	1	⅝
XCE071805	12	6	2	2 ½	45	15	3	1	⅝
XCE080804	4	2	2	2 ½	16	4	4	1	1 ¼
XCE080806	4	2	2	2 ½	16	4	4	1	1 ¼
XCE080808	4	2	2	2 ½	16	4	4	1	1 ¼
XCE081004	6	3	2	2 ½	24	6	4	1	1 ¼
XCE081006	6	3	2	2 ½	24	6	4	1	1 ¼
XCE081008	6	3	2	2 ½	24	6	4	1	1 ¼
XCE081204	8	4	2	2 ½	32	8	4	1	1 ¼
XCE081206	8	4	2	2 ½	32	8	4	1	1 ¼
XCE081208	8	4	2	2 ½	32	8	4	1	1 ¼
XCE091105	6	3	2	2 ½	35	7	5	1	1 ¼
XCE101004	9	3	3	2 ½	36	6	6	1	1 ¼
XCE101006	9	3	3	2 ½	36	6	6	1	1 ¼
XCE101008	9	3	3	2 ½	36	6	6	1	1 ¼
XCE101206	12	4	3	2 ½	48	8	6	1	¾
XCE101406	12	4	3	2 ½	50	10	6	1	¾
XCE101408	12	4	3	2 ½	50	10	6	1	¾
XCE101410	12	4	3	2 ½	50	10	6	1	¾
XCE121204	9	3	3	3	50	8	8	1	⅞
XCE121206	9	3	3	3	50	8	8	1	⅞
XCE121208	9	3	3	3	50	8	8	1	⅞
XCE121804	15	5	3	3	50	14	8	1	1 ⅝
XCE121806	15	5	3	3	50	14	8	1	1 ⅝
XCE121808	15	5	3	3	50	14	8	1	1 ⅝
XCE122005	18	6	3	3	50	16	8	1	1 ⅝
XCE122404	21	7	3	3	50	20	8	1	1 ⅝
XCE122406	21	7	3	3	50	20	8	1	1 ⅝

NOTE For closer spacing consult factory for details. Hydro test may be necessary for closer hole spacing.

Minimum Spacing for Operators in Covers

Catalog #	STANDARD OPERATORS				MINIATURE OPERATORS				COVER
	Max #	Max Rows	Max Per Row	Spacing CL to CL	Max #	Max Rows	Max Per Row	Spacing CL to CL	Thickness
XCE122408	21	7	3	3	50	20	8	1	1 ½
XCE122410	21	7	3	3	50	20	8	1	1 ½
XCE123006	27	9	3	3	50	26	8	1	1 ¾
XCE123604	33	11	3	3	50	32	8	1	1 ¾
XCE123606	33	11	3	3	50	32	8	1	1 ¾
XCE123608	33	11	3	3	50	32	8	1	1 ¾
XCE124608	42	14	3	3	50	41	8	1	1 ¼
XCE141404	16	4	4	3	50	10	10	1	¾
XCE141406	16	4	4	3	50	10	10	1	¾
XCE141408	16	4	4	3	50	10	10	1	¾
XCE142210	24	6	4	3	50	18	10	1	1 ½
XCE142213	24	6	4	3	50	18	10	1	1 ½
XCE142806	32	8	4	3	50	24	10	1	1 ½
XCE161604	16	4	4	3 ½	50	11	11	1	¾
XCE161606	16	4	4	3 ½	50	11	11	1	¾
XCE161608	16	4	4	3 ½	50	11	1	1	¾
XCE162406	24	6	4	3 ½	50	19	11	1	¾
XCE162408	24	6	4	3 ½	50	19	11	1	¾
XCE162410	24	6	4	3 ½	50	19	11	1	¾
XCE162806	28	7	4	3 ½	50	24	11	1	1 ¼
XCE163010	32	8	4	3 ½	50	24	11	1	1 ¼
XCE163406	36	9	4	3 ½	50	30	11	1	1 ¼
XCE164610	48	12	4	3 ½	50	41	11	1	1
XCE181804	36	6	6	2 ½	50	13	13	1	1
XCE181806	36	6	6	2 ½	50	13	13	1	1
XCE181808	36	6	6	2 ½	50	13	13	1	1
XCE182406	24	6	4	3 ½	50	19	13	1	1 ½
XCE182408	24	6	4	3 ½	50	19	13	1	1 ½
XCE182410	24	6	4	3 ½	50	19	13	1	1 ½
XCE183008	32	8	4	3 ½	50	25	13	1	1 ½
XCE183608	36	9	4	3 ½	50	31	13	1	1 ¾
XCE183610	36	9	4	3 ½	50	31	13	1	1 ¾
XCE203606*	45	9	5	3 ½	50	31	15	1	1 ¾
XCE203612*	45	9	5	3 ½	50	31	15	1	1 ¾
XCE204806*	65	13	5	3 ½	50	43	15	1	1
XCE204812*	65	13	5	3 ½	50	43	15	1	1
XCE242408	36	6	6	3 ½	50	19	19	1	1 ½
XCE242410	36	6	6	3 ½	50	19	19	1	1 ½
XCE243008	42	7	6	3 ½	50	25	19	1	1 ¾
XCE243608	54	9	6	3 ½	50	31	19	1	1 ¾
XCE243610	54	9	6	3 ½	50	31	19	1	1 ¾
XCE323612**	72	9	8	3 ½	50	31	27	1	1 ¾

NOTE For closer spacing consult factory for details. Hydro test may be necessary for closer hole spacing.

* ATEX approval but no Domestic UL & cUL approvals

** Consult factory