

# Explosionproof & Dust-Tight Control Station Box for Panel Mounting

## STANDARD FEATURES

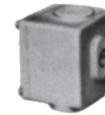
- Designed for mounting on panel boards so that pilot lights, pushbuttons and switch handles are flush with panel fronts and the bodies or housings are in back of the panel.
- Threaded necks are provided with locknuts to clamp fittings in place on panels when used with long operators. The parts extending beyond the face of the panel have a black anodized finish.
- Style XB is suitable for combinations of pilot lights, pushbuttons and selector switches for 600 volt maximum use and are large enough to include pilot light transformers. XB bodies have flat machined joint covers fastened with machine screws. Covers give maximum accessibility to interiors.
- All station boxes are drilled and tapped with 3/4" NPSM thread for operator, or pilot lights. Unused openings must be plugged with XPP plugs, XB style boxes are suitably padded for two conduit openings on one end and one on opposite end. 1" maximum conduit size.

## CERTIFICATIONS

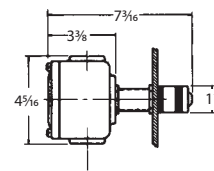
NEC Class I, Groups C & D  
Class II, Groups E, F, G

## DIMENSIONS

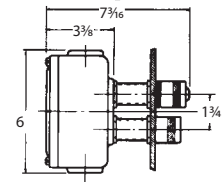
CAT #	DESCRIPTION	OUTSIDE DIMENSIONS (IN.)			WEIGHT EA. (LBS)
		W	L	D	
XB 1	1 station box - specify hubs	3 1/2	4 7/16	3 7/16	1 3/4
XB 2	2 station box - specify hubs	3 1/2	6 3/8	3 7/16	2
XB 3	3 station box - specify hubs	3 1/2	8 1/16	3 7/16	2 3/4
XB 4	4 station box - specify hubs	3 1/2	9 9/16	3 7/16	3 1/4



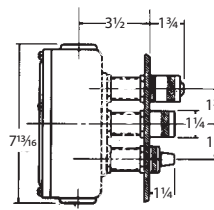
XB1



XB2



XB3



XB4

