



10/100 BASE-T SINGLE PORT THROUGH HOLE MAGNETICS

- Meets IEEE 802.3af & ANSI X 3.263
- Thru hole construction
- Many parts are PoE enabled
- Standard operating temp: 0°C to +70°C (see footnote)
- Industrial operating temp: -40°C to +85°C (see footnote)

Electrical Specifications @25°C

Part Number	OCL(μH Min) @100KHz,0.2V With 8mA DC Bias	Turns Ratio (±3%)	Insertion Loss (dB Max)	Return Loss (dB Min)				Cross talk (dB Min)		CMRR (dB Min)	HI-POT (Vrms)
				0.5-100MHz	0.5-30MHz	30.1-60MHz	60.1-80MHz	0.5-40MHz	40.1-100MHz		
AH1601D__	350	1CT:1CT	1.1	18	18-20*log(f/30)	12	35	33-20*log(f/50)	30	1500	
AH1602D__	350	1CT:1CT	1.1	18	18-20*log(f/30)	12	35	33-20*log(f/50)	30	1500	
AH1603D__	350	1CT:1CT	1.1	18	18-20*log(f/30)	12	35	33-20*log(f/50)	30	1500	
AH1604D__	350	1CT:1CT	1.1	18	18-20*log(f/30)	12	35	33-20*log(f/50)	30	1500	
AH1605D__	350	1CT:1CT	1.1	18	18-20*log(f/30)	12	35	33-20*log(f/50)	30	1500	
AH1606D__	350	1CT:1CT	1.1	18	18-20*log(f/30)	12	35	33-20*log(f/50)	30	1500	
AH1607D__	350	1CT:1CT	1.1	18	18-20*log(f/30)	12	35	33-20*log(f/50)	30	1500	
AH1608D__	350	1CT:1CT	1.1	18	18-20*log(f/30)	12	35	33-20*log(f/50)	30	1500	
AH1609D__	350	1CT:1CT	1.1	18	18-20*log(f/30)	12	35	33-20*log(f/50)	30	1500	
AH1610D__	350	1CT:1CT	1.1	18	18-20*log(f/30)	12	35	33-20*log(f/50)	30	1500	
AH1611D__	350	1CT:1CT	1.1	18	18-20*log(f/30)	12	35	33-20*log(f/50)	30	1500	
AH1612D__	350	1CT:1CT	1.1	18	18-20*log(f/30)	12	35	33-20*log(f/50)	30	1500	
AH1613D__	350	1CT:1CT	1.1	18	18-20*log(f/30)	12	35	33-20*log(f/50)	30	1500	
AH1614D__	350	1CT:1CT	1.1	18	18-20*log(f/30)	12	35	33-20*log(f/50)	30	1500	
AH1615D__	350	1CT:1CT	1.1	18	18-20*log(f/30)	12	35	33-20*log(f/50)	30	1500	
AH1616D__	350	1CT:1CT	1.1	18	18-20*log(f/30)	12	35	33-20*log(f/50)	30	1500	
AH1618D__	350	1CT:1CT	1.1	18	18-20*log(f/30)	12	35	33-20*log(f/50)	30	1500	
AH1619D__	350	1CT:1CT	1.1	18	18-20*log(f/30)	12	35	33-20*log(f/50)	30	1500	
AH1620D__	350	1CT:1CT	1.1	18	18-20*log(f/30)	12	35	33-20*log(f/50)	30	1500	
AH1621D__	350	1CT:1CT	1.1	18	18-20*log(f/30)	12	35	33-20*log(f/50)	30	1500	
AH1622D__	350	1CT:1CT	1.1	18	18-20*log(f/30)	12	35	33-20*log(f/50)	30	1500	
AH1623D__	350	1CT:1CT	1.1	18	18-20*log(f/30)	12	35	33-20*log(f/50)	30	1500	
AH1625D__	350	1CT:1CT	1.1	18	18-20*log(f/30)	12	35	33-20*log(f/50)	30	1500	
AH1626D__	350	1CT:1CT	1.1	18	18-20*log(f/30)	12	35	33-20*log(f/50)	30	1500	
AH1628D__	350	1CT:1CT	1.1	18	18-20*log(f/30)	12	35	33-20*log(f/50)	30	1500	
AH1629D__	350	1CT:1CT	1.1	18	18-20*log(f/30)	12	35	33-20*log(f/50)	30	1500	
AH1633D__	350	1CT:1CT	1.1	18	18-20*log(f/30)	12	35	33-20*log(f/50)	30	1500	
AH1634D__	350	1CT:1CT	1.1	18	18-20*log(f/30)	12	35	33-20*log(f/50)	30	1500	
AH1635D__	350	1CT:1CT	1.1	18	18-20*log(f/30)	12	35	33-20*log(f/50)	30	1500	
AH1636D__	350	1CT:1CT	1.1	18	18-20*log(f/30)	12	35	33-20*log(f/50)	30	1500	
AH1637D__	350	1CT:1CT	1.1	18	18-20*log(f/30)	12	35	33-20*log(f/50)	30	1500	
AH1638D__	350	1CT:1CT	1.1	18	18-20*log(f/30)	12	35	33-20*log(f/50)	30	1500	
AH1639D__	350	1CT:1CT	1.1	18	18-20*log(f/30)	12	35	33-20*log(f/50)	30	1500	
AH1640D__	350	1CT:1CT	1.1	18	18-20*log(f/30)	12	35	33-20*log(f/50)	30	1500	
AH1641D__	350	1CT:1CT	1.1	18	18-20*log(f/30)	12	35	33-20*log(f/50)	30	1500	
AH1642D__	350	1CT:1CT	1.1	18	18-20*log(f/30)	12	35	33-20*log(f/50)	30	1500	
AH1644D__	350	1CT:1CT	1.1	18	18-20*log(f/30)	12	35	33-20*log(f/50)	30	1500	

*Complete part number by inserting "S" for Standard Temp or "I" for Industrial Temp.

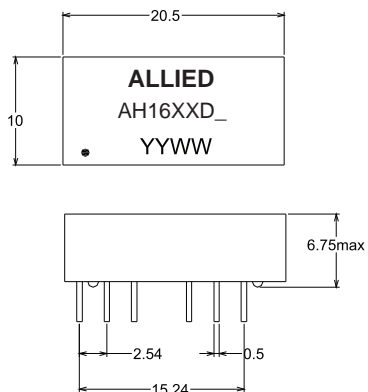
All specifications subject to change without notice.



10/100 BASE-T SINGLE PORT THROUGH HOLE MAGNETICS

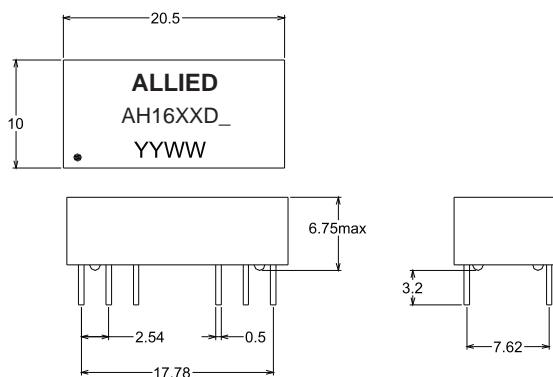
MECHANICAL

AH1601D_, AH1602D_, AH1607D_, AH1608D_,
 AH1610D_, AH1611D_, AH1612D_, AH1613D_,
 AH1616D_, AH1622D_, AH1626D_, AH1628D_,
 AH1640D_, AH1609D_, AH1637D_, AH1638D_



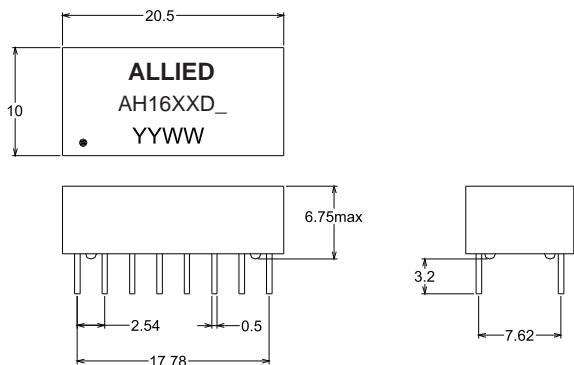
NOTE: PIN 4,8,9,13 cut off

AH1603D_, AH1606D_, AH1621D_, AH1633D_,
 AH1641D_, AH1642D_, AH1644D_

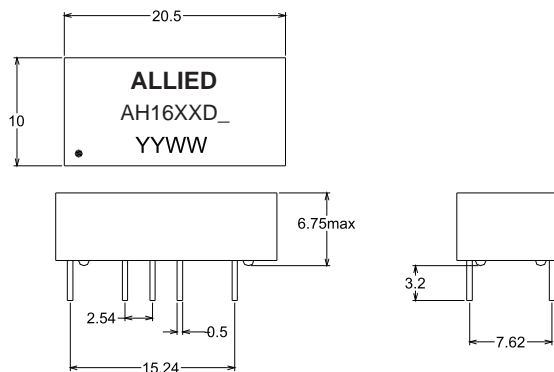


NOTE: PIN 4,5,12,13 cut off

AH1604D_, AH1605D_, AH1614D_, AH1618D_,
 AH1619D_, AH1623D_, AH1634D_, AH1635D_,
 AH1639D_

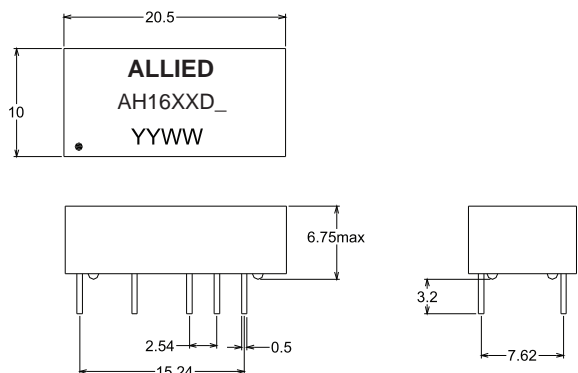


AH1615D_, AH1625D_



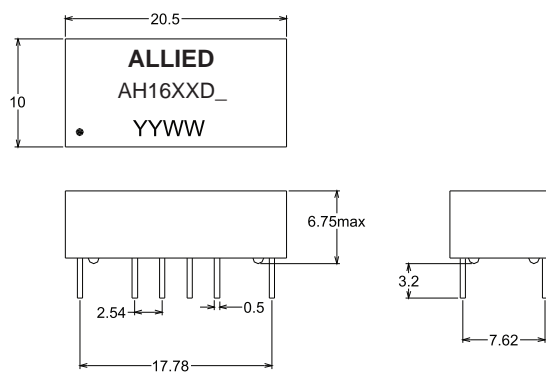
NOTE: PIN 2,6,8,9,11,15 cut off

AH1620D_



NOTE: PIN 2,4,8,9,13,15 cut off

AH1629D_



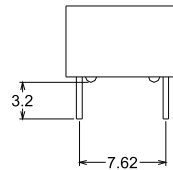
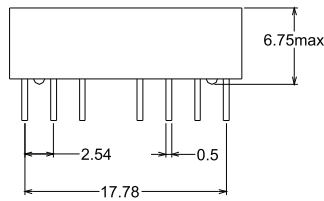
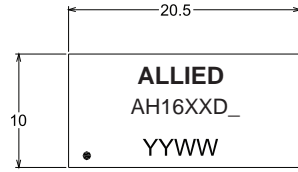
NOTE: PIN 2,7,10,15 cut off



10/100 BASE-T SINGLE PORT THROUGH HOLE MAGNETICS

MECHANICAL

AH1636D_

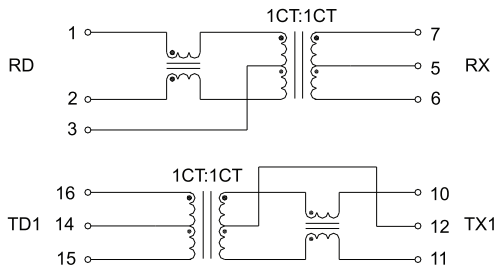


NOTE: PIN 4,13 cut off

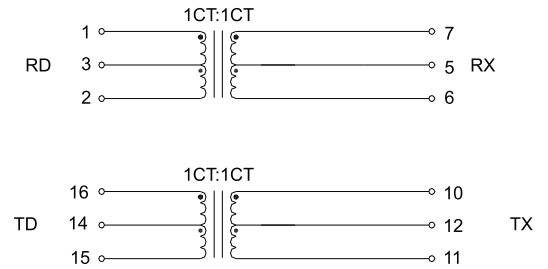
Unless otherwise specified all tolerances are: ± 0.25 in mm

SCHEMATICS

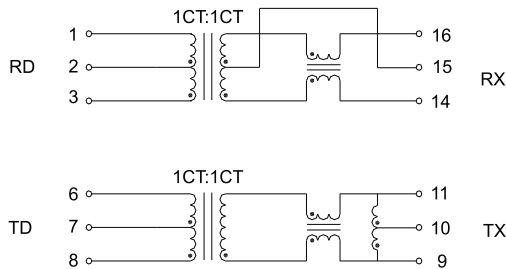
AH1601D_



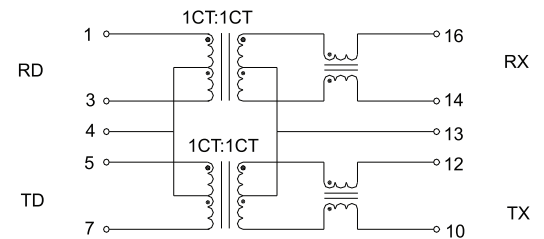
AH1602D_



AH1603D_



AH1605D_, AH1614D_, AH1625D_

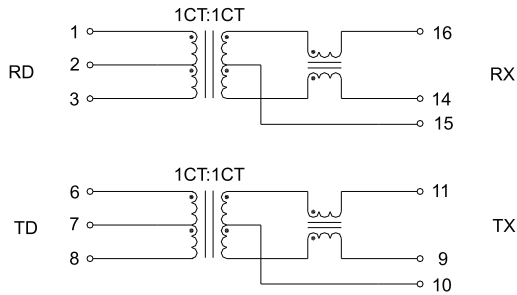




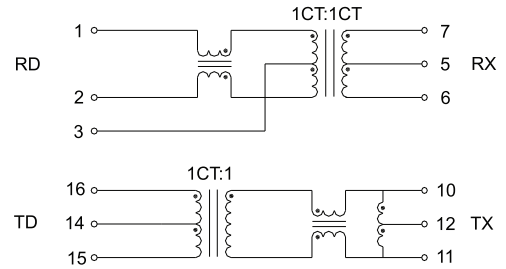
10/100 BASE-T SINGLE PORT THROUGH HOLE MAGNETICS

SCHEMATICS

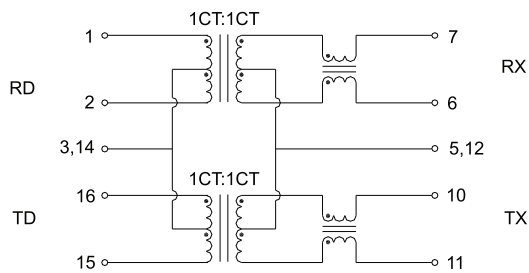
AH1606D_, AH1633D_, AH1641D_



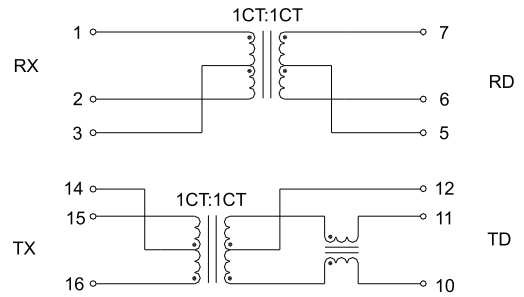
AH1607D_



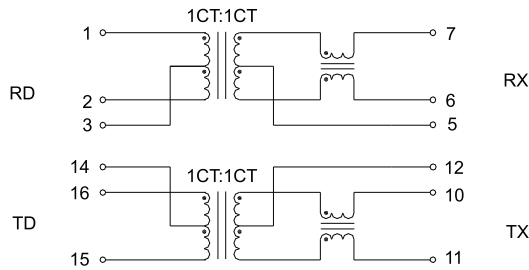
AH1608D_



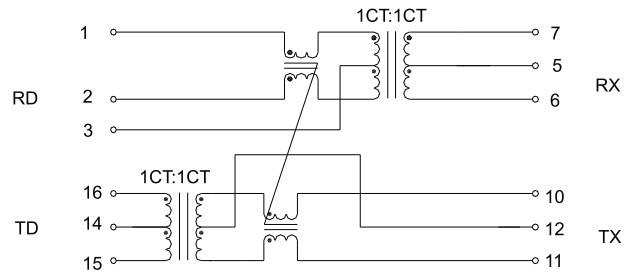
AH1604D_, AH1609D_



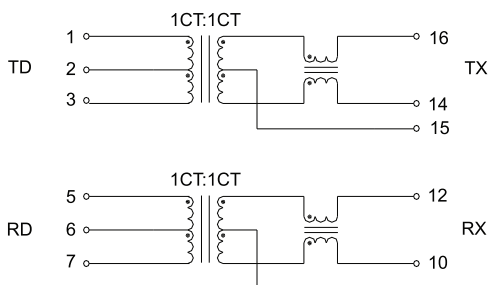
AH1610D_, AH1621D_, AH1622D_, AH1638D_



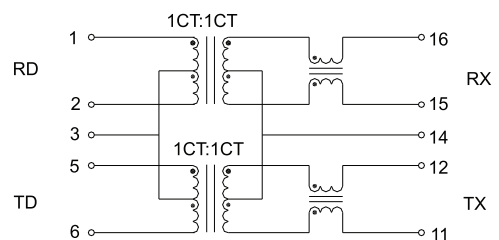
AH1611D_, AH1628D_



AH1612D_



AH1613D_

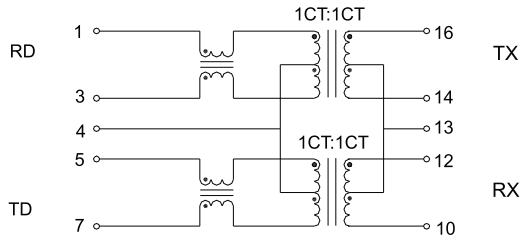




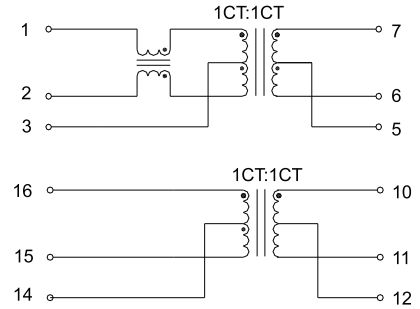
10/100 BASE-T SINGLE PORT THROUGH HOLE MAGNETICS

SCHEMATICS

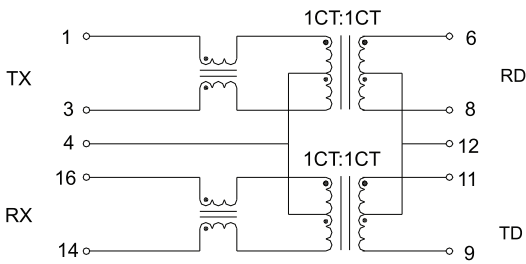
AH1615D_



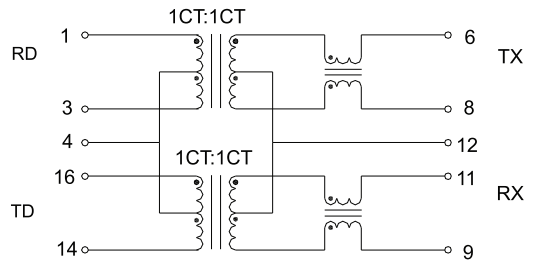
AH1616D_, AH1637D_



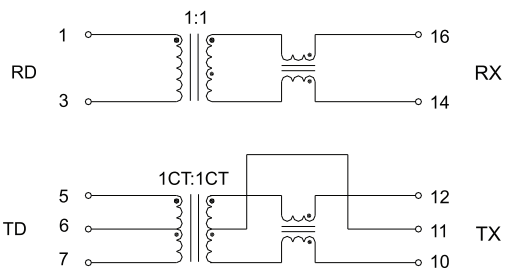
AH1619D_



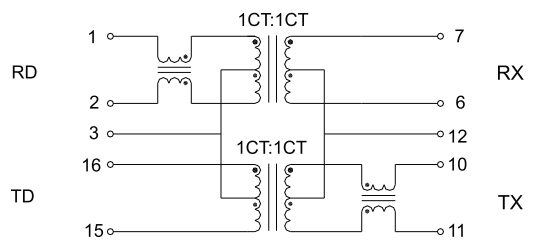
AH1618D_, AH1629D_



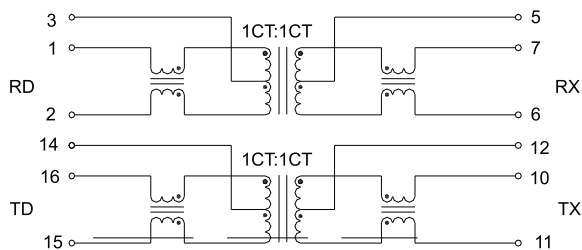
AH1620D_



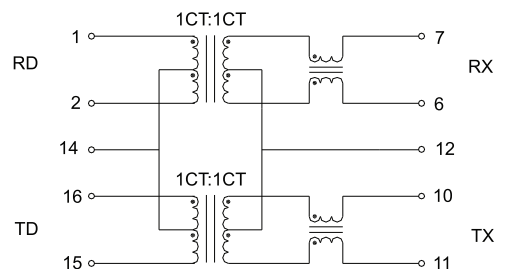
AH1623D_



AH1626D_, AH1640D_



AH1634D_

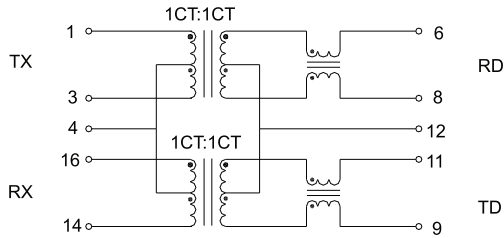




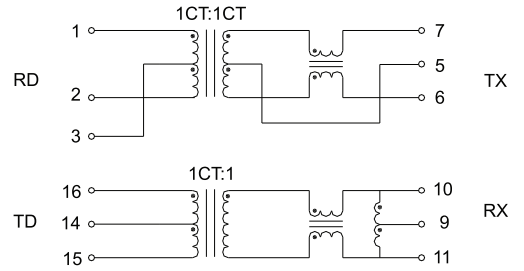
10/100 BASE-T SINGLE PORT THROUGH HOLE MAGNETICS

SCHEMATICS

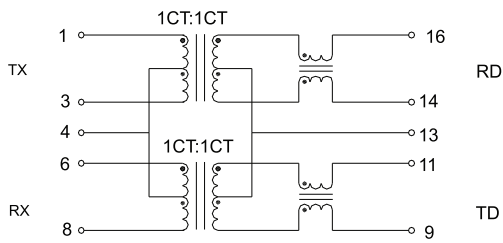
AH1635D_



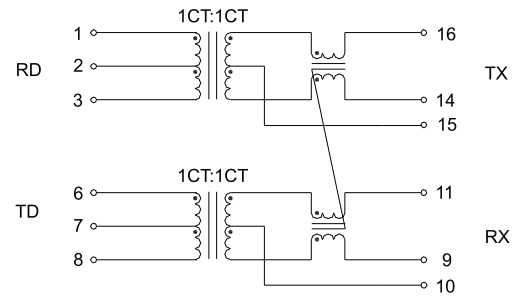
AH1636D_



AH1639D_



AH1642D_



AH1644D_

