



# 10/100 BASE-T DUAL PORT THROUGH HOLE MAGNETICS

- Meets IEEE 802.3af & ANSI X 3.263
- Thru hole construction
- Many parts are PoE enabled
- Standard operating temp: 0°C to +70°C (see footnote)
- Industrial operating temp: -40°C to +85°C (see footnote)

## Electrical Specifications @25°C

Part Number	OCL(uH Min) @100KHz,0.2V With 8mA DC Bias	Turns Ratio (±3%)	Insertion Loss (dB Max)	Return Loss (dB Min)				Cross talk (dB Min)		CMRR (dB Min)	HI-POT (Vrms)
				0.5-100MHz	0.5-30MHz	30.1-60MHz	60.1-80MHz	0.5-40MHz	40.1-100MHz		
AH2001D_	350	1CT:1CT	1.1	18	18-20*log(f/30)	12	35	33-20*log(f/50)	30	1500	
AH2002D_	350	1CT:1CT	1.1	18	18-20*log(f/30)	12	35	33-20*log(f/50)	30	1500	
AH2003D_	350	1CT:1CT	1.1	18	18-20*log(f/30)	12	35	33-20*log(f/50)	30	1500	
AH2004D_	350	1CT:1CT	1.1	18	18-20*log(f/30)	12	35	33-20*log(f/50)	30	1500	
AH2005D_	350	1CT:1CT&1:1	1.1	18	18-20*log(f/30)	12	35	33-20*log(f/50)	30	1500	
AH2006D_	350	1CT:1CT	1.1	18	18-20*log(f/30)	12	35	33-20*log(f/50)	30	1500	
AH2007D_	350	1CT:1CT	1.1	18	18-20*log(f/30)	12	35	33-20*log(f/50)	30	1500	
AH2008D_	350	1CT:1CT	1.1	18	18-20*log(f/30)	12	35	33-20*log(f/50)	30	1500	
AH2009D_	350	1CT:1CT	1.1	18	18-20*log(f/30)	12	35	33-20*log(f/50)	30	1500	
AH2010D_	350	1CT:1CT	1.1	18	18-20*log(f/30)	12	35	33-20*log(f/50)	30	1500	
AH2011D_	350	1CT:1CT	1.1	18	18-20*log(f/30)	12	35	33-20*log(f/50)	30	1500	
AH2012D_	350	1CT:1CT	1.1	18	18-20*log(f/30)	12	35	33-20*log(f/50)	30	1500	
AH2013D_	350	1CT:1CT	1.1	18	18-20*log(f/30)	12	35	33-20*log(f/50)	30	1500	
AH2014D_	350	1CT:1CT	1.1	18	18-20*log(f/30)	12	35	33-20*log(f/50)	30	1500	
AH2015D_	350	1CT:1CT	1.1	18	18-20*log(f/30)	12	35	33-20*log(f/50)	30	1500	
AH2016D_	350	1CT:1CT	1.1	18	18-20*log(f/30)	12	35	33-20*log(f/50)	30	1500	
AH2018D_	350	1CT:1CT	1.1	18	18-20*log(f/30)	12	35	33-20*log(f/50)	30	1500	
AH2019D_	350	1CT:1CT	1.1	18	18-20*log(f/30)	12	35	33-20*log(f/50)	30	1500	
AH2020D_	350	1CT:1CT	1.1	18	18-20*log(f/30)	12	35	33-20*log(f/50)	30	1500	
AH2021D_	350	1CT:1CT	1.1	18	18-20*log(f/30)	12	35	33-20*log(f/50)	30	1500	
AH2022D_	350	1CT:1CT	1.1	18	18-20*log(f/30)	12	35	33-20*log(f/50)	30	1500	
AH2023D_	350	1CT:1CT	1.1	18	18-20*log(f/30)	12	35	33-20*log(f/50)	30	1500	
AH2024D_	350	1CT:1CT	1.1	18	18-20*log(f/30)	12	35	33-20*log(f/50)	30	1500	
AH2025D_	350	1CT:1CT	1.1	18	18-20*log(f/30)	12	35	33-20*log(f/50)	30	1500	
AH2026D_	350	1CT:1CT	1.1	18	18-20*log(f/30)	12	35	33-20*log(f/50)	30	1500	
AH2027D_	350	1CT:1CT	1.1	18	18-20*log(f/30)	12	35	33-20*log(f/50)	30	1500	
AH2028D_	350	1CT:1CT	1.1	18	18-20*log(f/30)	12	35	33-20*log(f/50)	30	1500	

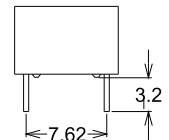
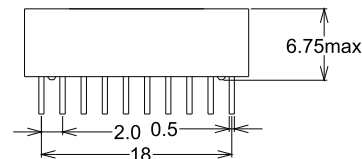
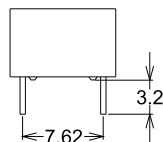
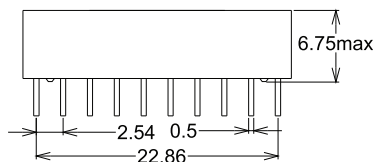
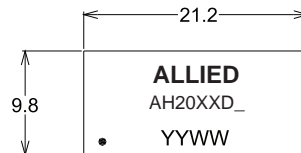
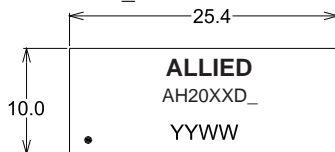
\*Complete part number by inserting "S" for Standard Temp or "I" for Industrial Temp.

All specifications subject to change without notice.

## MECHANICAL

AH2001D\_ , AH2003D\_ , AH2005D\_ , AH2006D\_ ,  
 AH2007D\_ , AH2010D\_ , AH2012D\_ , AH2013D\_ ,  
 AH2015D\_ , AH2019D\_ , AH2020D\_ , AH2022D\_ ,  
 AH2023D\_ , AH2024D\_ , AH2026D\_ , AH2027D\_ ,  
 AH2028D\_

AH2002D\_ , AH2004D\_ , AH2008D\_ , AH2009D\_ ,  
 AH2011D\_ , AH2014D\_ , AH2016D\_ , AH2018D\_ ,  
 AH2021D\_ , AH2025D\_



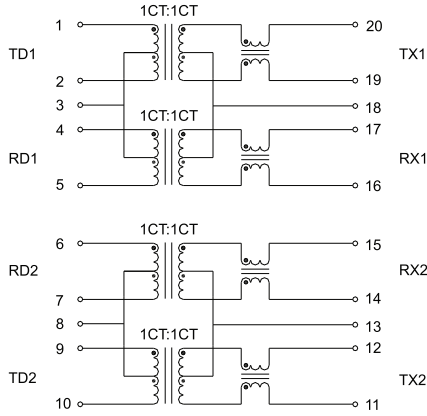
Unless otherwise specified all tolerances are: ±0.25 in mm



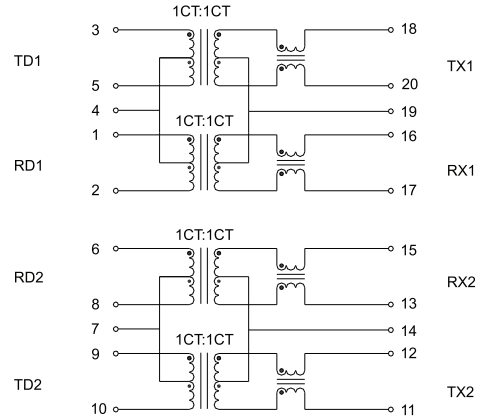
10/100 BASE-T DUAL PORT THROUGH HOLE MAGNETICS

**SCHEMATICS**

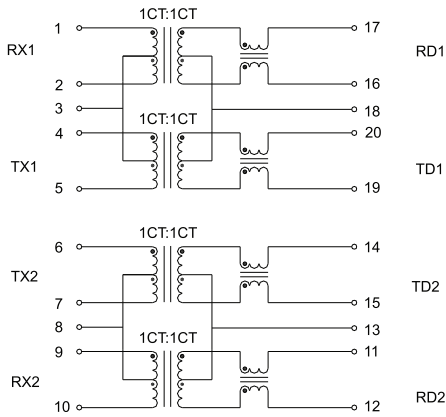
**AH2001D\_, AH2002D\_, AH2010D\_, AH2012D\_, AH2021D\_, AH2025D\_**



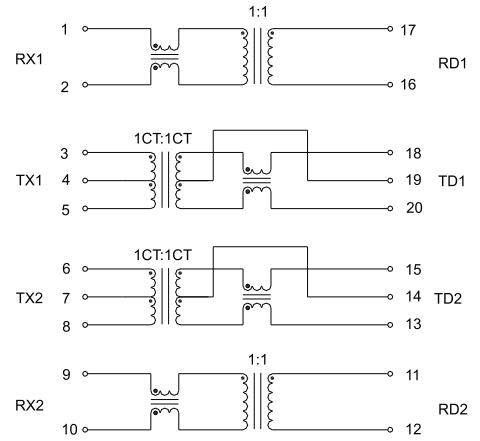
**AH2003D\_, AH2008D\_**



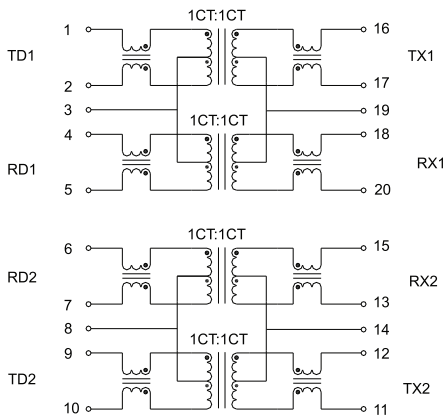
**AH2004D\_**



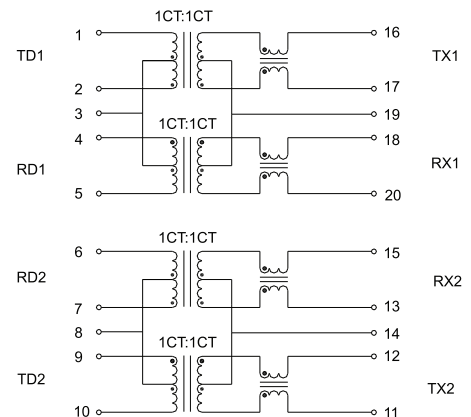
**AH2005D\_**



**AH2007D\_**



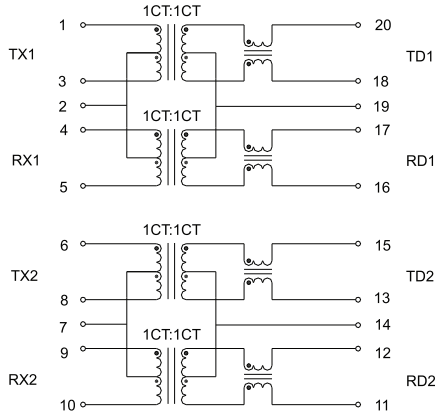
**AH2006D\_**



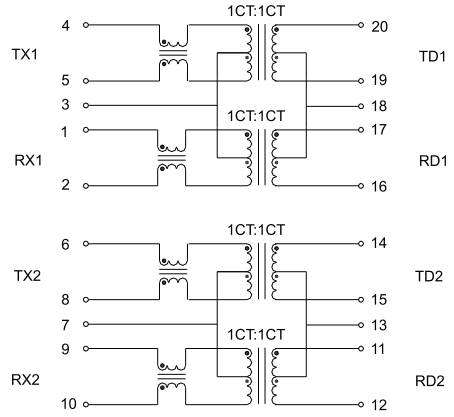


# 10/100 BASE-T DUAL PORT THROUGH HOLE MAGNETICS

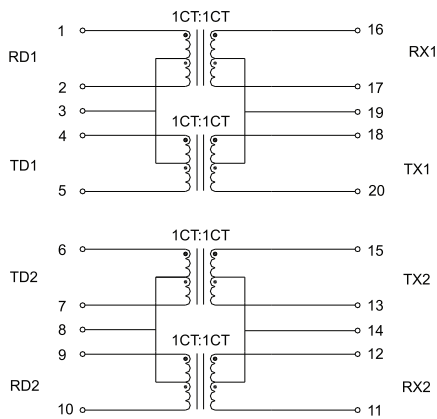
AH2009D\_



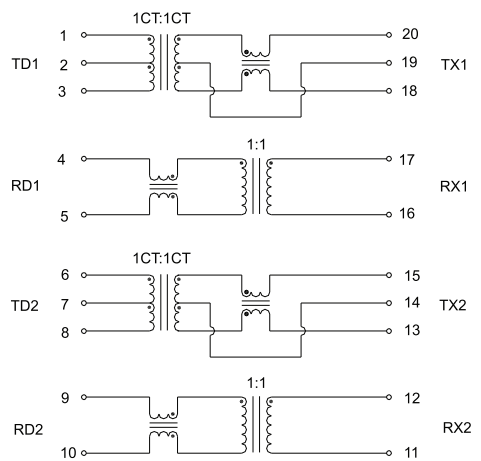
AH2011D\_



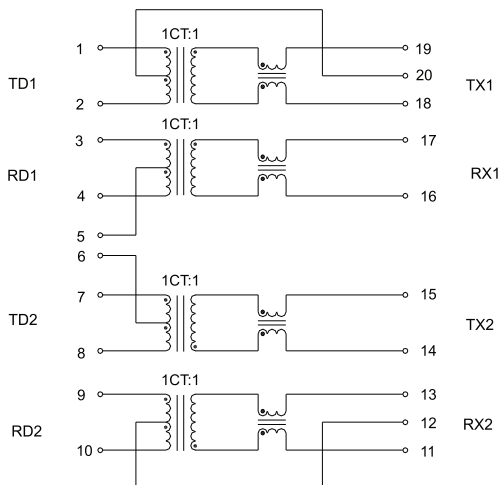
AH2014D\_



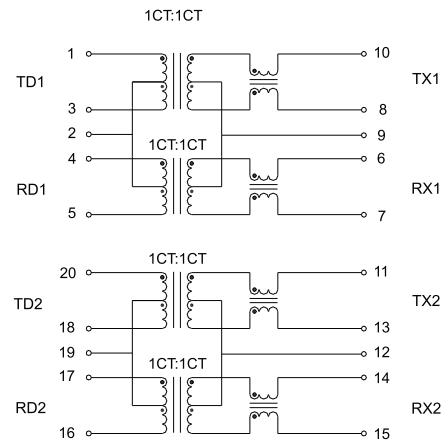
AH2013D\_



AH2015D\_



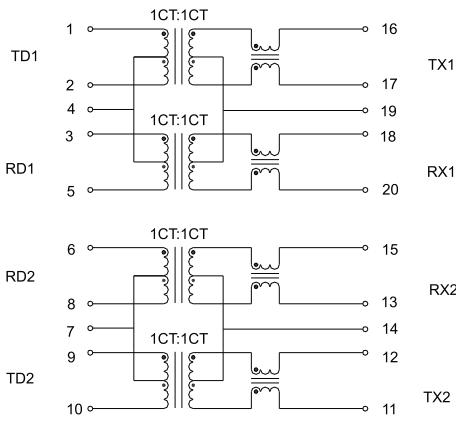
AH2016D\_



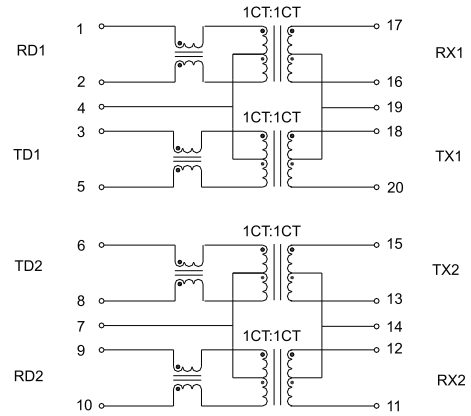


# 10/100 BASE-T DUAL PORT THROUGH HOLE MAGNETICS

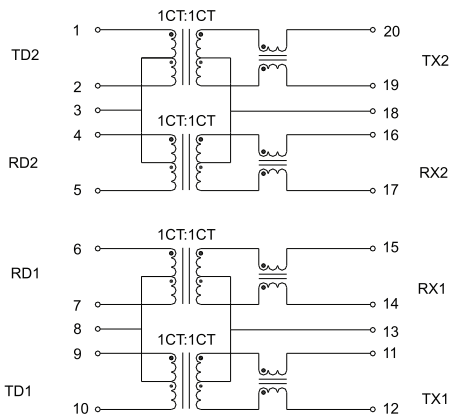
**AH2018D\_**



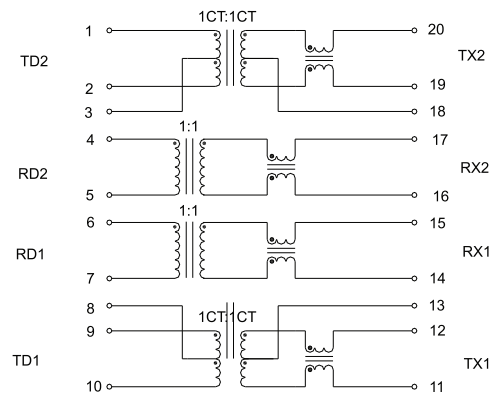
**AH2019D\_**



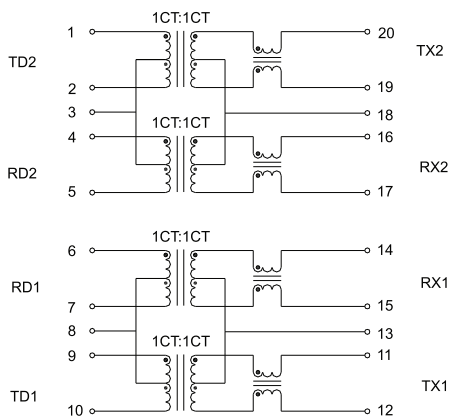
**AH2022D\_**



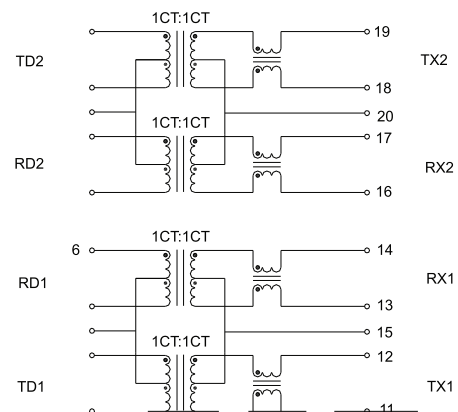
**AH2020D\_**

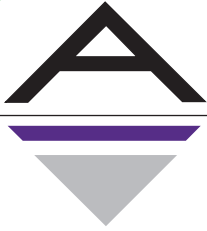


**AH2023D\_**



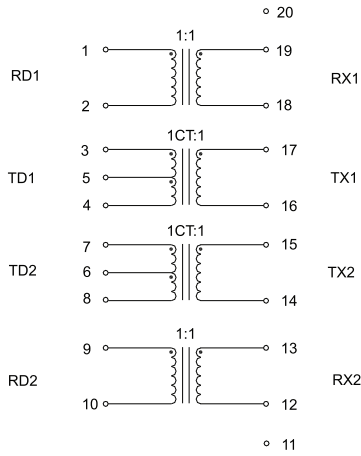
**AH2024D\_**



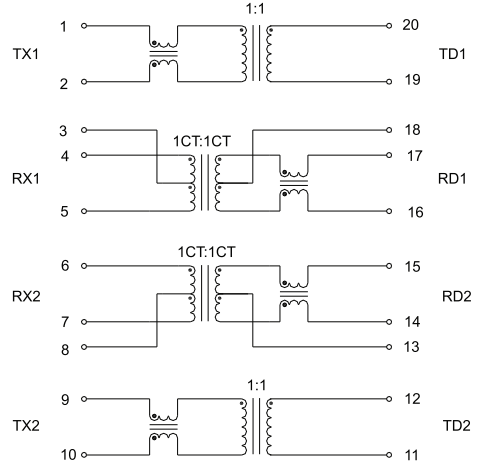


# 10/100 BASE-T DUAL PORT THROUGH HOLE MAGNETICS

**AH2027D\_**



**AH2026D\_**



**AH2028D\_**

