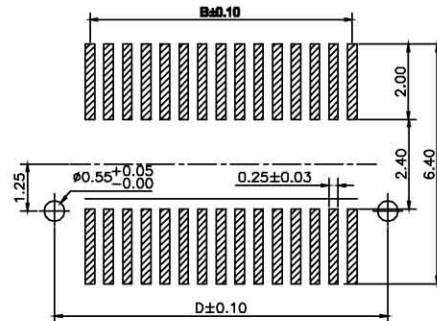
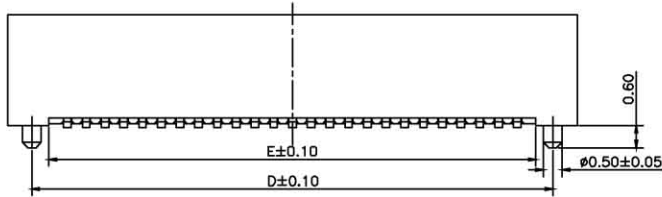


**Specifications**

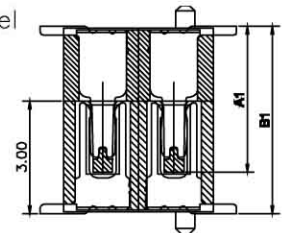
1. Current Rating : 0.5A AC/DC
2. Voltage Rating : 50V AC/DC
3. Contact Resistance : 30m ohm. max.
4. Insulation Resistance : 100M ohm. min.at 100V DC
5. Withstanding Voltage : 100V AC for one minute
6. Operating Temperature Range : -20°C to +105°C

**Material and Plating**

1. Housing : High Temp. Plastic (Natural Color)UL94V-0
  2. Contact : Phosphor Bronze
  3. Plating : Gold Plating
- Packing Number:1000Pcs/Reel



PCB LAYOUT



Mating Draw (Ref)

**\*\*Mating Dimension**

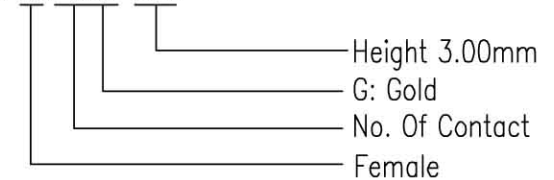
P/N(Male)	P/N(Female)	Male Height Dim A1	Mating Height Dim B1
B2M05-XXG-390	B2F05-XXG-300	3.90	5.0
B2M05-XXG-440	B2F05-XXG-300	4.40	5.5

**\*\*Contact Dimension**

Contact	DIM. A	DIM. B	DIM. C	DIM. D	DIM. E	Contact	DIM. A	DIM. B	DIM. C	DIM. D	DIM. E	Contact	DIM. A	DIM. B	DIM. C	DIM. D	DIM. E
10	5.20	2.00	2.95	3.90	3.00	28	9.70	6.50	7.45	8.40	7.50	46	14.20	11.00	11.95	12.90	12.00
12	5.70	2.50	3.45	4.40	3.50	30	10.20	7.00	7.95	8.90	8.00	48	14.70	11.50	12.45	13.40	12.50
14	6.20	3.00	3.95	4.90	4.00	32	10.70	7.50	8.45	9.40	8.50	50	15.20	12.00	12.95	13.90	13.00
16	6.70	3.50	4.45	5.40	4.50	34	11.20	8.00	8.95	9.90	9.00	60	17.70	14.50	15.45	16.40	15.50
18	7.20	4.00	4.95	5.90	5.00	36	11.70	8.50	9.45	10.40	9.50	80	22.20	19.50	20.45	21.40	20.50
20	7.70	4.50	5.45	6.40	5.50	38	12.20	9.00	9.95	10.90	10.00	100	27.20	24.50	25.45	26.40	25.50
22	8.20	5.00	5.95	6.90	6.00	40	12.70	9.50	10.45	11.40	10.50	120	32.20	29.50	30.45	31.40	30.50
24	8.70	5.50	6.45	7.40	6.50	42	13.20	10.00	10.95	11.90	11.00						
26	9.20	6.00	6.95	7.90	7.00	44	13.70	10.50	11.45	12.40	11.50						

**How To Order**

B2F05-XXG-300



DRAWN:  
Jeremy Liu

CHECKED:  
Jerry Chen

APPROVAL:  
Mike Wu

GENERAL TOLERANCE:  
.X=±0.2  
.XX=±0.15

UNIT: MM

SCALE:1:1

SHEET: 1 / 1

PROJECTION:

RoHS Compliant

DESCRIPTION: 0.5mm Board To Board Female  
3.0mm Height

PART NO: B2F05-XXG-300

SIZE

**A4**

E			
D			
C			
B			
A	03-Apr-2004	New Mold	Jeremy Liu
REV	DATE	FILE	BY