

4

3

2

1

PART NO. SEE TABLE

CUSTOMER DRAWING

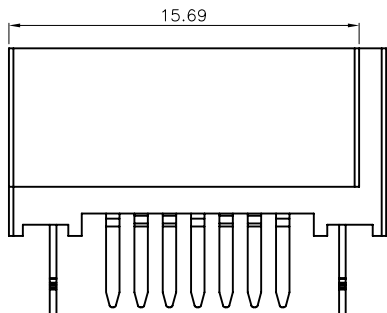
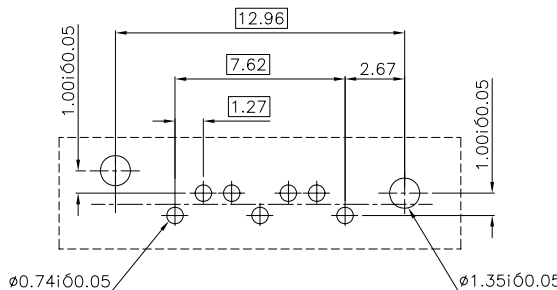
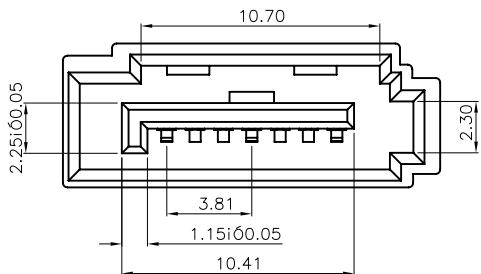
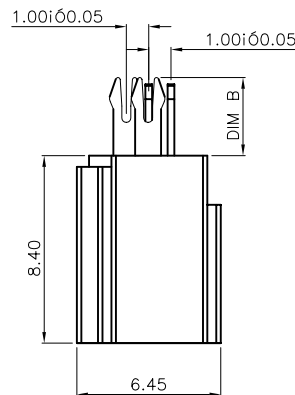
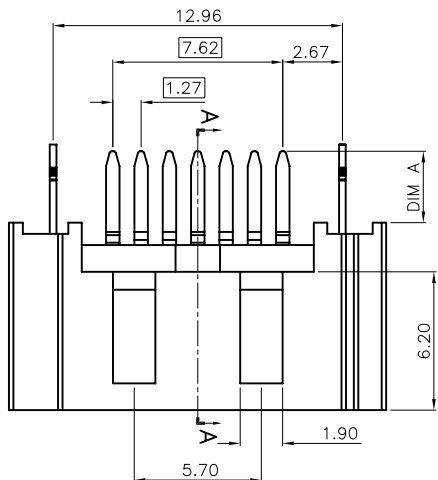
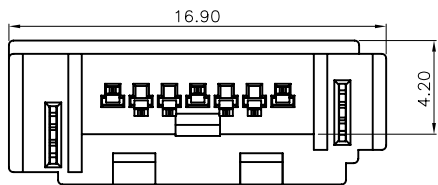
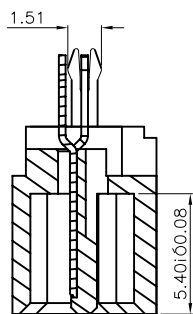
REVISIONS			
LTR	DESCRIPTION	Drawing	DATE
A	ease for Manufacture Initial Rel	WITTY	10/19/06
B	ADD THE NEW TYPE	WITTY	04/13/07
C	更改主體的結構	WITTY	05/21/07
D	ADD NEW TYPE "ORANGE"	WITTY	06/14/07
E	ADD NEW TYPE:BLUE,RED,BLACK(L=2.45)	WITTY	08/22/07
F	CHAGNE PA46 TYPE:L=2.10,ADD G/F TYPE	WITTY	09/17/07

TABLE

PART NO	PLATING	DIM A	DIM B	MATERIAL&COLOR
007-01-00460	15U"	L=2.10mm	2.50	PA46 BLACK
007-01-00488	G/F	L=2.10mm	2.50	PA46 BLUE
007-01-00459	15U"			
007-01-00487	G/F	L=2.10mm	2.50	PA46 RED
007-01-00458	15U"			
007-01-00486	G/F	L=2.45mm	2.50	LCP ORANGE
007-01-00432	15U"			
007-01-00431	G/F	L=2.45mm	2.50	LCP BLACK
007-01-00405	15U"			
007-01-00404	G/F	L=3.20mm	3.50	
007-01-00261	15U"			
007-01-00260	G/F			

NOTES:

- MATERIAL:
 - HOUSING:HIGH TEMPERATURE THERMOPLASTIC,UL94 V-0,
 - COLOR:SEE TABLE
 - CONTACT:COPPER ALLOY T=0.30mm
 - LATCH:COPPER ALLOY T=0.30mm
- PLATING:
 - LATCH:CU OVER 50u" MIN NICKEL
 - UNDERPLATE,SOLDERTAIL150u"MIN TIN OVER 50u" MIN NICKEL UNDERPLATE
 - CONTACT:100U"MIN TIN PLATING ON SOLDERTAILS 50U"MIN NICKET UNDERPLATING OVER ALL GOLD SPECIFICATION:
- ELECTRONICAL SPECIFICATION:
 - CURRENT RATING:1.5 AMPERE PER CONTACT
 - CONTACT RESISTANCE:30 MILLIOHMS MAX.
 - INSULATION RESISTANCE:1000 MEGOHMS MIN.
 - DIELECTRIC WITHSTANDING VOLTAGE:500 VAC.
 - OPERATING TEMPERATURE:-20°C~+85°C
- MEETS THE REQUIREMENTS OF DIRECTIVE 2002/95/EC OF THE EUROPEAN PARLIAMENT AND OF THE COUNCIL OF 27 JANUARY 2003 ON THE RESTRICTION OF THE USE OF CERTAIN HAZARDOUS SUBSTANCES IN ELECTRICAL AND ELECTRONIC EQUIPMENT(ROHS)



DIMENSION ARE MILLIMETERS
TOLERANCES ARE :
DECIMALS
.X ± 0.20
.XX ± 0.15
ANGLE:
X ± 1°

APPROVALS		DATE
DRAWN	WITTY	09/17/07
CHECKED		
APPROVALS		

PART NO. SEE TABLE	
TITLE: SATA 7P PLUG 180° A型 魚叉式全包有錯位	
SIZE mm	SCALE : 1 : 1
DRAWING NO. 000385	REV. F
ID NO. XXXXXXXXX	SHEET 1 OF 1

DESCRIPTION

QTY UNIT DO NOT SCALE DRAWING

4

3

2

1