



SPECIFICATIONS



EagleDrive³TM

**Input: 380 – 480V
3ph**
**Output: 380 – 480V
3ph**
7.5HP – 20HP

Description

EagleDrive³TM consists of a family of Variable Frequency Drives designed to be cost-effective and easy-to-use controls for use with 3-phase induction motors.

Series # 3 covers four (4) ratings in the power range of 7.5HP to 20.0HP, all suitable for 380 - 480V three-phase input, with 380 - 480Volt three-phase output. All EagleDrive³ products use open loop voltage and frequency control to regulate the speed of the motor. Digital control is combined with the latest IGBT power semiconductor technology to give a compact, robust solution for special or general-purpose drive applications. The product is easy to use and easy to install. Together with simple programming, EagleDrive³ minimizes the overall applied cost of a drive solution. The full range of EagleDrive³ product is designed to operate on either 200V – 240V 1 or 3-phase input for 1/2 – 3.0HP, or 380V – 480V 3-phase input for 1.0HP – 120HP.

NOTE: For single-phase induction motor control of PSC (Permanent-Split-Capacitor) or Shaded-Pole motors, see our EagleDrive¹TM series.

Overview

- Three-Phase Input / Three-Phase Output
- Push-button Keypad as Standard
 - 14 Standard Parameters plus Extended Parameter Set
- Designed for Low Technical Support
- Simple to Install – Contactor style power connections, key holes for mounting
- Easy to Use – "On-board" Helpcard & bright LED display
- Easy to Service – Easy access terminals, local or remote control & programming
- Powerful Performance & Features
- Optional Filters – Meets EMC Standards for conducted & radiated emissions
- Other Options:
 - EagleEye³TM (Hand-held wireless control via optical infrared link)
 - Braking Resistors for Size 2 and larger
 - EagleVision³TM (Multi-language WindowsTM-based software manages Parameter sets)



- EagleMouseTM (Optical communication port for RS232)
- PI Controller Module – Supports feedback transducers with either a 0–10V (3-wire) or 4–20mA (2-wire) formats
- EagleLinkTM – A parts kit to enable a Master / Slave system using optical communications
- Meets International Standards
UL, CSA (UL508c), CE (EN60204-1, EN50081)

Specifications

- 380 - 480Volt Input (3ph)
- 380 - 480Volt Output (3ph)
- 13.0 – 29.5Amps Max Output Current
- Max. Ambient Temperature 50° C
- Max. Altitude 6,560 Feet (2,000m)
- Storage temperature range –40° to +60° C
- Enclosure Protection: IP20 / NEMA 1
- Dimensions: Size 3 = 10.24"L x 6.73"W x 6.89"D

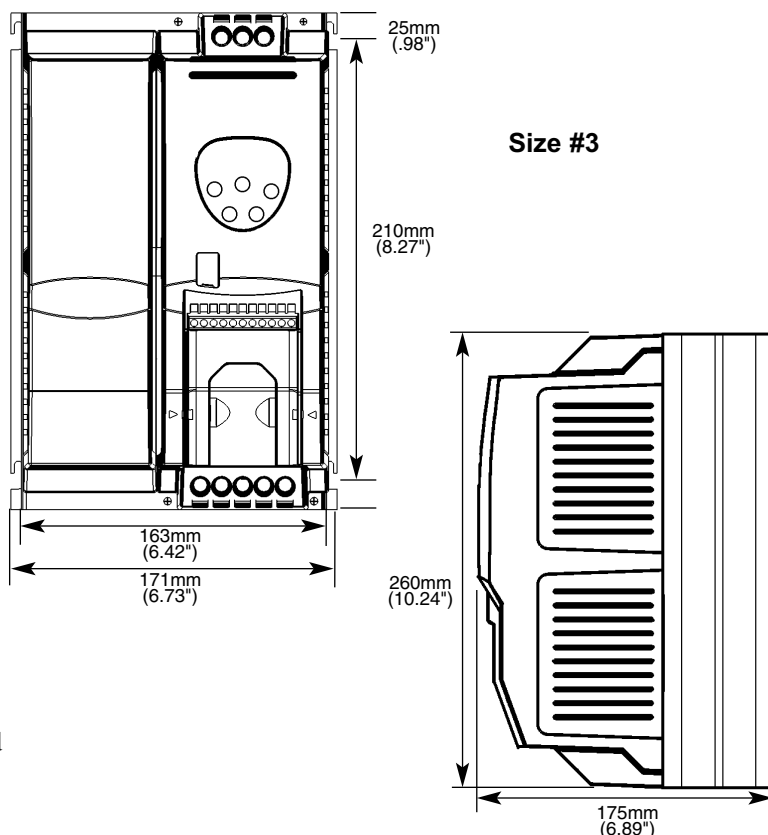
Series #3

For assistance call 888-456-3398

Technical Features

- Power Output: Variable (Fan/Pump) Torque or Constant Torque Selectable
- Drive Efficiency: Typically 95%
- Speed Regulation: 1.0%
- Speed Range: 0 to 30,000 RPM
- Overload Rating: 150% for 60 seconds
- Minimum Full Load Torque: 3Hz
- Selectable 4kHz, 8kHz, 16kHz Inverter Switching Frequency
- Silent Motor Running (32kHz effective switching frequency)
- Power Dip Ride Through
- Auto Restart Function Available
- Skip Frequency - Selectable
- Spinning Start Function – Selectable
- 3 Programmable Digital Inputs
- 1 Analog Selectable Input (current or speed)
- 1 Programmable Relay
- Control Terminal Inputs Galvanically Isolated
- Control Terminal Outputs Short Circuit Proof
- Automatic Safe Shutdown for comprehensive drive protection
- Parameter Lock
- Protection Features: Phase to Phase or Phase to Ground Shorts, Current trip, Thermal Overload, Over Voltage, Under Voltage, etc.

Mechanical Drawings



EagleDrive3™ Data

Size		3	3	3	3
EagleDrive3 Model Reference	ED-xxxx-US	34075	34100	34150	34200
Input Voltage	+/- 10%	380-480	380-480	380-480	380-480
Phases		3	3	3	3
Motor Output Rating	HP	7.5	10.0	15.0	20.0
	kW	5.5	7.5	11.0	15.0
Output Current ()=Var. Torque	Amps	13.0 (18)	18.0 (25)	25.0 (29)	29.5
Fuse or MCB rating 3-phase	A	20	32	40	40
Max. Amb. Temp. ° C for switching frequency >8kHz	@16kHz	50°	40°	20°	–
	@32kHz	–	–	–	–
Motor Cable Size	AWG	12	12	10	8
Max. Motor Cable Length	Feet	328	328	328	328
Weight	lbs.	11.0	11.0	11.0	11.0
Min. Braking Resistor	Ω	22	22	22	22

For assistance call 888-456-3398

E-mail: info@anaconsystems.com Web Site: www.anaconsystems.com

**ANACON
SYSTEMS**

Design & Application Center: 9433 Bee Cave Road, Bldg. 1, Suite 140, Austin, TX 78733 Tel: (512)263-8668 - Fax (512)263-8060
Corporate Headquarters: 1043 Shoreline Boulevard, Suite 202, Mountain View, CA 94043 USA - Tel: (650)934-3355 - Fax: (650)934-3356

