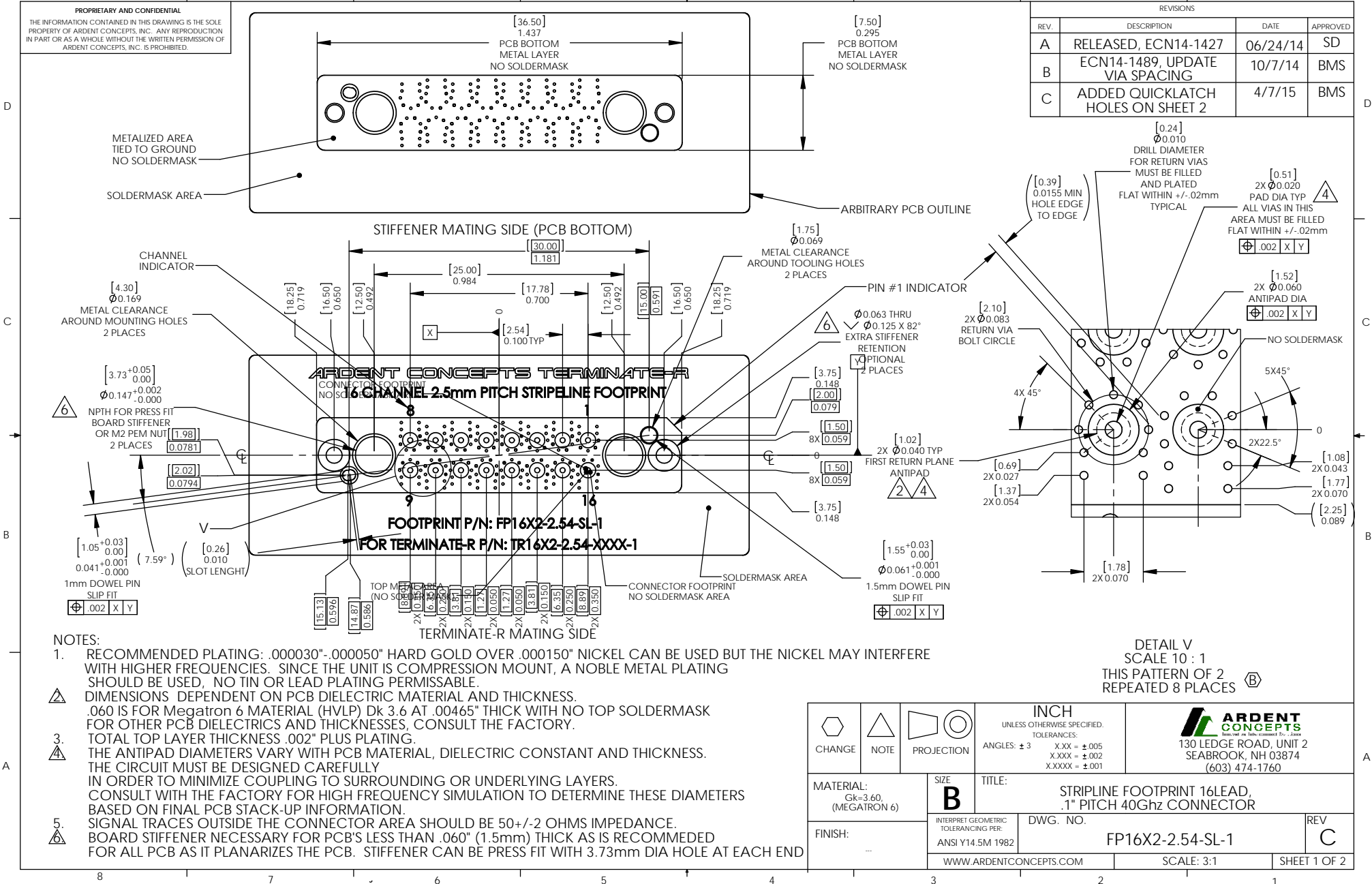


**PROPRIETARY AND CONFIDENTIAL**  
 THE INFORMATION CONTAINED IN THIS DRAWING IS THE SOLE PROPERTY OF ARDENT CONCEPTS, INC. ANY REPRODUCTION IN PART OR AS A WHOLE WITHOUT THE WRITTEN PERMISSION OF ARDENT CONCEPTS, INC. IS PROHIBITED.

REVISIONS			
REV.	DESCRIPTION	DATE	APPROVED
A	RELEASED, ECN14-1427	06/24/14	SD
B	ECN14-1489, UPDATE VIA SPACING	10/7/14	BMS
C	ADDED QUICKLATCH HOLES ON SHEET 2	4/7/15	BMS



**NOTES:**

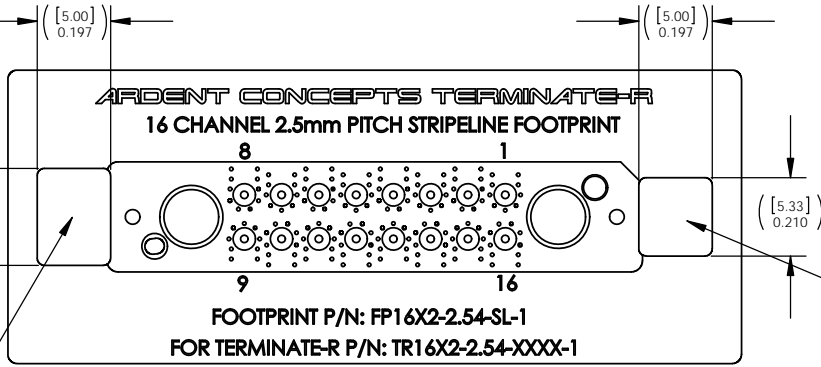
- RECOMMENDED PLATING: .000030"-.000050" HARD GOLD OVER .000150" NICKEL CAN BE USED BUT THE NICKEL MAY INTERFERE WITH HIGHER FREQUENCIES. SINCE THE UNIT IS COMPRESSION MOUNT, A NOBLE METAL PLATING SHOULD BE USED, NO TIN OR LEAD PLATING PERMISSIBLE.
- △** DIMENSIONS DEPENDENT ON PCB DIELECTRIC MATERIAL AND THICKNESS. .060 IS FOR Megatron 6 MATERIAL (HVLP) Dk 3.6 AT .00465" THICK WITH NO TOP SOLDERMASK FOR OTHER PCB DIELECTRICS AND THICKNESSES, CONSULT THE FACTORY.
- △** TOTAL TOP LAYER THICKNESS .002" PLUS PLATING.
- △** THE ANTI-PAD DIAMETERS VARY WITH PCB MATERIAL, DIELECTRIC CONSTANT AND THICKNESS. THE CIRCUIT MUST BE DESIGNED CAREFULLY IN ORDER TO MINIMIZE COUPLING TO SURROUNDING OR UNDERLYING LAYERS. CONSULT WITH THE FACTORY FOR HIGH FREQUENCY SIMULATION TO DETERMINE THESE DIAMETERS BASED ON FINAL PCB STACK-UP INFORMATION.
- △** SIGNAL TRACES OUTSIDE THE CONNECTOR AREA SHOULD BE 50+/-2 OHMS IMPEDANCE. BOARD STIFFENER NECESSARY FOR PCB'S LESS THAN .060" (1.5mm) THICK AS IS RECOMMENDED FOR ALL PCB AS IT PLANARIZES THE PCB. STIFFENER CAN BE PRESS FIT WITH 3.73mm DIA HOLE AT EACH END

DETAIL V  
 SCALE 10 : 1  
 THIS PATTERN OF 2  
 REPEATED 8 PLACES **Ⓢ**

CHANGE	NOTE	PROJECTION	INCH UNLESS OTHERWISE SPECIFIED. TOLERANCES: ANGLES: ±3 X.XX = ±.005 X.XXX = ±.002 X.XXXX = ±.001	 <b>ARDENT CONCEPTS</b> 130 LEDGE ROAD, UNIT 2 SEABROOK, NH 03874 (603) 474-1760
MATERIAL: Gk=3.60, (MEGATRON 6)	SIZE <b>B</b>	TITLE: STRIPLINE FOOTPRINT 16LEAD, .1" PITCH 40GHz CONNECTOR		REV <b>C</b>
FINISH: ---	INTERPRET GEOMETRIC TOLERANCING PER: ANSI Y14.5M 1982	DWG. NO. FP16X2-2.54-SL-1	WWW.ARDENTCONCEPTS.COM	
SCALE: 3:1		SHEET 1 OF 2		

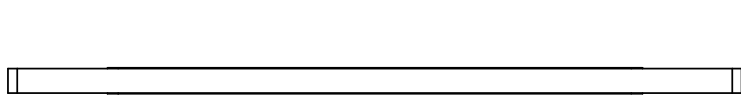
8 7 6 5 4 3 2 1

**PROPRIETARY AND CONFIDENTIAL**  
 THE INFORMATION CONTAINED IN THIS DRAWING IS THE SOLE  
 PROPERTY OF ARDENT CONCEPTS, INC. ANY REPRODUCTION  
 IN PART OR AS A WHOLE WITHOUT THE WRITTEN PERMISSION OF  
 ARDENT CONCEPTS, INC. IS PROHIBITED.

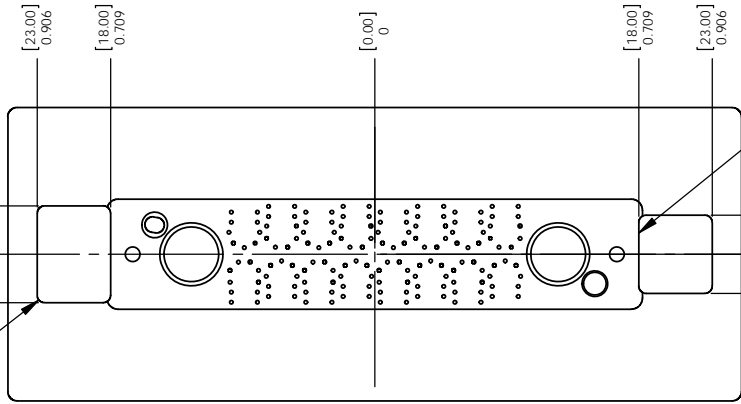


LARGE LATCH HOLE

SMALL LATCH HOLE (NEAREST PIN1)



PCB THICKNESS FOR QUICKLATCH  
 .06" (1.5) MIN TO .250" (6.4) MAX



METAL RETURN PLANE UP TO EDGE OF LATCH HOL. TOP AND BOTTOM 4 PLACES

[0.50] R0.020 TYP

HOLES SHOWN FOR QUICK LATCH VERSION OF TR.

CHANGE NOTE PROJECTION	INCH UNLESS OTHERWISE SPECIFIED. TOLERANCES: ANGLES: ±3 X.XX = ±.005 X.XXX = ±.002 X.XXXX = ±.001	 <b>ARDENT CONCEPTS</b> <small>Interpret Geometric Tolerancing For...</small> 130 LEDGE ROAD, UNIT 2 SEABROOK, NH 03874 (603) 474-1760
	MATERIAL: --- FINISH: ---	
SIZE <b>B</b>		REV <b>C</b>
SCALE: 3:1		SHEET 2 OF 2

8 7 6 5 4 3 2 1