

25A / 32A

▶ DOOR/PANEL MOUNTING

 Technical Info (p. 192)

PADLOCKABLE PRESENTATION

Yellow/Red Handle
Part Number

Grey Handle
Part Number



0172001



0174101

25 A

- 3P
- 3P + NC/NO
- 4P neutral on left
- 4P + NC/NO

- 0172001
- 0172011
- 0172021
- 0172031

- 0174001
- 0174011
- 0174021
- 0174031

32 A

- 3P
- 3P+NC/NO
- 4P neutral on left
- 4P + NC/NO

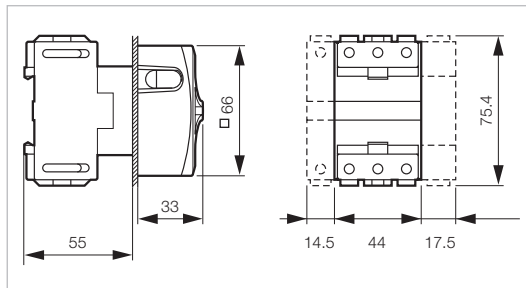
- 0172101
- 0172111
- 0172121
- 0172131

- 0174101
- 0174111
- 0174121
- 0174131

STANDARD VERSIONS IP40 RATED.

TO ORDER WITH IP65 GASKETS ADD -1 TO PART NUMBERS ABOVE.

I.E. 0172001-1

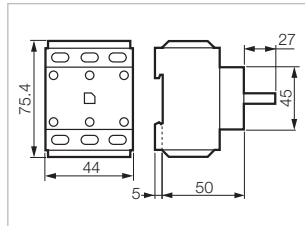


COMPONENTS AND ACCESSORIES

Part Number



0172000



3-pole switch body without handle

- 25 A
- 32 A

- 0172000
- 0172100

Additional pole

- 25 A
- 32 A

- 0172075
- 0172175

Neutral pole

- 25 A
- 32 A

- 0172065
- 0172165

Junction block

Ground or Neutral

0172185

Auxiliary contact

NC/NO

0172179

IP65 Seal Kit

0172267

Replacement Handle

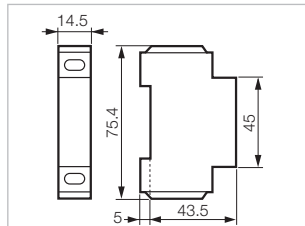
- 66 - Yellow/Red
- 66 - Grey

- 0172601
- 0174601



0172065

0172185



25A / 32A

▶ DOOR/PANEL MOUNTING



NON- PADLOCKABLE PRESENTATION

Yellow/Red Handle
Part Number

Grey Handle
Part Number



0172002



0174102

25 A

- 3P
- 3P + NC/NO
- 4P neutral on left
- 4P + NC/NO

- 0172002
- 0172012
- 0172022
- 0172032

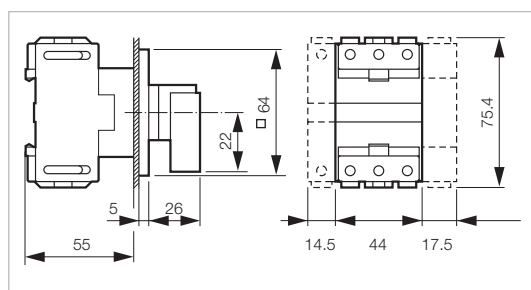
- 0174002
- 0174012
- 0174022
- 0174032

32 A

- 3P
- 3P + NC/NO
- 4P neutral on left
- 4P + NC/NO

- 0172102
- 0172112
- 0172122
- 0172132

- 0174102
- 0174112
- 0174122
- 0174132



STANDARD VERSIONS IP40 RATED.

TO ORDER WITH IP65 GASKETS ADD -1 TO PART NUMBERS ABOVE.

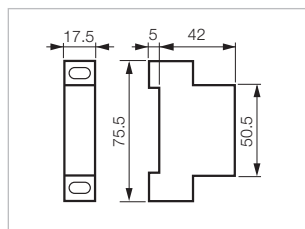
IE. 0172002-1

COMPONENTS AND ACCESSORIES

Part Number



0172179



3-pole switch body without handle

- 25 A
- 32 A

- 0172000
- 0172100

Additional pole

- 25 A
- 32 A

- 0172075
- 0172175

Neutral pole

- 25 A
- 32 A

- 0172065
- 0172165

Junction block

Ground or Neutral

0172185

Auxiliary contact

NC/NO

0172179

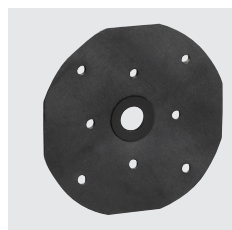
IP65 Seal Kit

0172267

Replacement Handle, Plate, and Frame

- 64 - Yellow/Red
- 64 - Grey

- 0172602
- 0174602



0172267

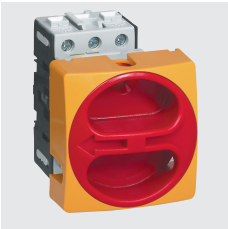
25A / 32A

▶ DOOR/PANEL MOUNTING - PADLOCKABLE

 Technical Info (p. 192)

PADLOCKABLE PRESENTATION Ø 22 SINGLE-HOLE MOUNTING

Yellow/Red Handle
Part Number

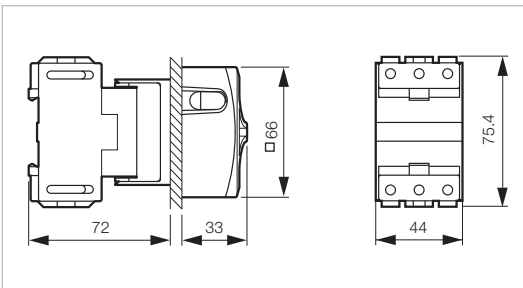


0172003

25 A
3P **0172003**
3P + NC/NO **0172013**
4P neutral on left **0172023**
4P + NC/NO **0172033**

32 A
3P **0172103**
3P+NC/NO **0172113**
4P neutral on left **0172123**
4P + NC/NO **0172133**

**STANDARD VERSIONS IP40 RATED.
NOT AVAILABLE IN IP65 VERSIONS.**

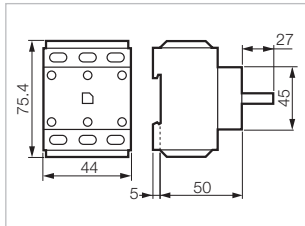


COMPONENTS AND ACCESSORIES

Part Number



0172000



3-pole switch body without handle

25 A **0172000**
32 A **0172100**

Additional pole

25 A **0172075**
32 A **0172175**

Neutral pole

25 A **0172065**
32 A **0172165**

Junction block

Ground or Neutral **0172185**

Auxiliary contact

NC/NO **0172179**

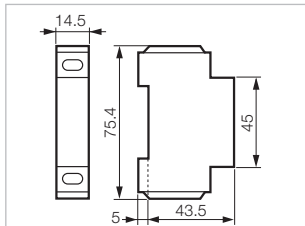
Replacement Handle

□ 66 - Ø 22 single-hole-mounting - Yellow/Red **0172603**



0172065

0172185



25A / 32A

▶ DOOR/PANEL MOUNTING - PADLOCKABLE

 Technical Info (p. 192)

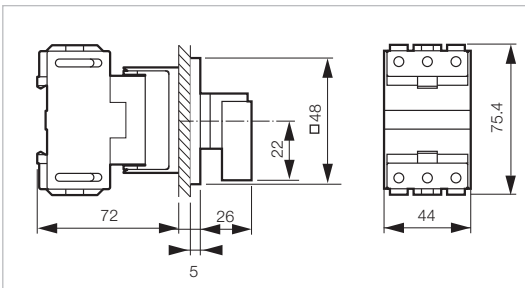
NON-PADLOCKABLE PRESENTATION Ø 22 SINGLE-HOLE MOUNTING

Yellow/Red Handle
Part Number



0172004

25 A	
3P	0172004
3P+NC/NO	0172014
4P neutral on left	0172024
32 A	
3P	0172104
3P+NC/NO	0172214
4P neutral on left	0172124



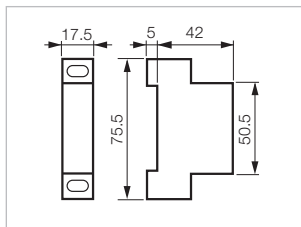
**STANDARD VERSIONS IP40 RATED.
NOT AVAILABLE IN IP65 VERSIONS.**

COMPONENTS AND ACCESSORIES

Part Number



0172179



3-pole switch body without handle	
25 A	0172000
32 A	0172100
Additional pole	
25 A	0172075
32 A	0172175
Neutral pole	
25 A	0172065
32 A	0172165
Junction block	
Ground or Neutral	0172185
Auxiliary contact	
NC/NO	0172179
Replacement Handle, Plate, and Frame	
<input type="checkbox"/> 48 - Ø 22 single-hole-mounting - Yellow/Red	0172604

25A / 32A

► DIN-RAIL IN-PANEL MOUNTING

 Technical Info (p. 192)

PADLOCKABLE PRESENTATION

Grey Handle
Part Number



0174005

25 A

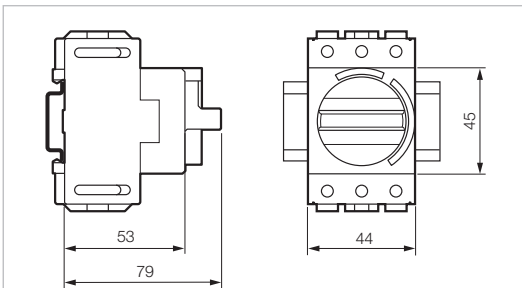
- 3P
- 3P + NC/NO
- 4P neutral on left
- 4P + NC/NO

- 0174005
- 0174015
- 0174025
- 0174035

32 A

- 3P
- 3P+NC/NO
- 4P neutral on left
- 4P + NC/NO

- 0174105
- 0174115
- 0174125
- 0174135

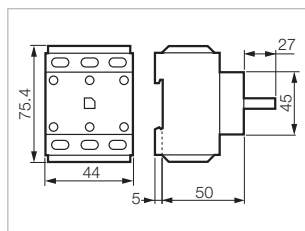


COMPONENTS AND ACCESSORIES

Part Number



0172000



3-pole switch body without handle

- 25 A
- 32 A

- 0172000
- 0172100

Additional pole

- 25 A
- 32 A

- 0172075
- 0172175

Neutral pole

- 25 A
- 32 A

- 0172065
- 0172165

Junction block

Ground or Neutral

- 0172185

Auxiliary contact

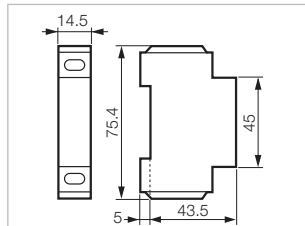
NC/NO

- 0172179



0172065

0172185



25A / 32A

▶ DOOR INTERLOCK MOUNTING - NO METAL SHAFT EXTENSION



PADLOCKABLE PRESENTATION

Yellow/Red Handle
Part Number

Grey Handle
Part Number



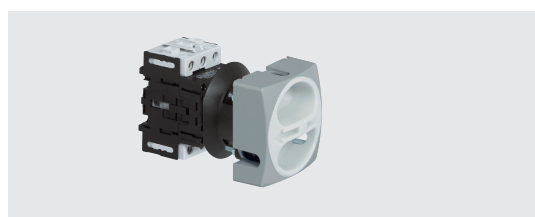
0165009NS

25 A

3P
3P + NC/NO
4P neutral on left
4P + NC/NO

0165009NS
0165019NS
0165029NS
0165039NS

0168009NS
0168019NS
0168029NS
0168039NS



0168109NS

32 A

3P
3P + NC/NO
4P neutral on left
4P + NC/NO

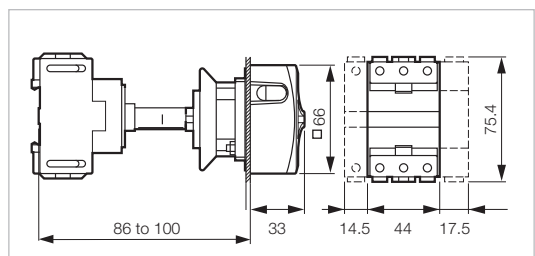
0165109NS
0165119NS
0165129NS
0165139NS

0168109NS
0168119NS
0168129NS
0168139NS

STANDARD VERSIONS IP40 RATED.

TO ORDER WITH IP65 GASKETS ADD -1 TO PART NUMBERS ABOVE.

IE. 0165009NS-1

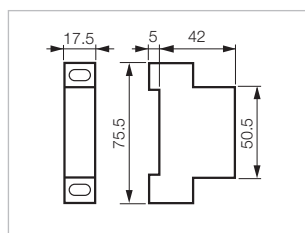


COMPONENTS AND ACCESSORIES

Part Number



0172179



3-pole switch body without handle

25 A
32 A

0172000
0172100

Additional pole

25 A
32 A

0172075
0172175

Neutral pole

25 A
32 A

0172065
0172165

Junction block

Ground or Neutral

0172185

Auxiliary contact

NC/NO

0172179

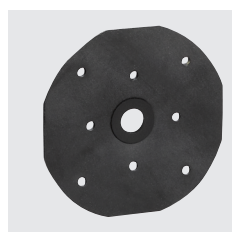
IP65 Seal Kit

0174259

Replacement Handle

66 - Yellow/Red
 66 - Grey

0172601
0174601



0174259

25A / 32A

▶ DOOR INTERLOCK MOUNTING - SHORT METAL SHAFT EXTENSION

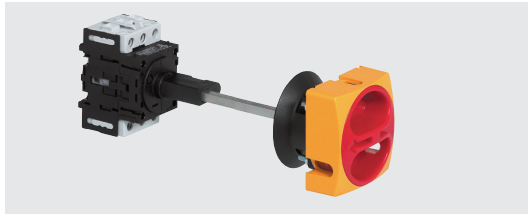


Technical Info (p.192)

PADLOCKABLE PRESENTATION

Yellow/Red Handle
Part Number

Grey Handle
Part Number



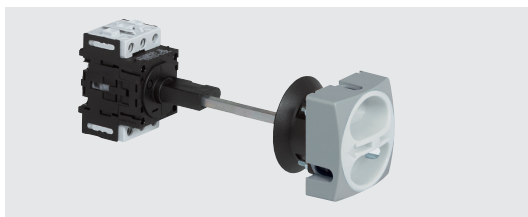
0165009SS

25 A

- 3P
- 3P + NC/NO
- 4P neutral on left
- 4P + NC/NO

- 0165009SS
- 0165019SS
- 0165029SS
- 0165039SS

- 0168009SS
- 0168019SS
- 0168029SS
- 0168039SS



0168109SS

32 A

- 3P
- 3P + NC/NO
- 4P neutral on left
- 4P + NC/NO

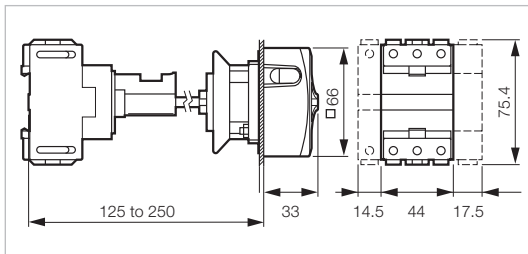
- 0165109SS
- 0165119SS
- 0165129SS
- 0165139SS

- 0168109SS
- 0168119SS
- 0168129SS
- 0168139SS

STANDARD VERSIONS IP40 RATED.

TO ORDER WITH IP65 GASKETS ADD -1 TO PART NUMBERS ABOVE.

IE. 0165009SS-1

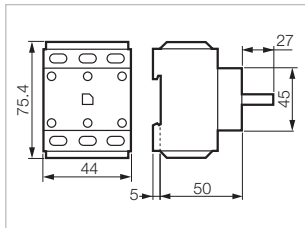


COMPONENTS AND ACCESSORIES

Part Number



0172000



3-pole switch body without handle

- 25 A
- 32 A

- 0172000
- 0172100

Additional pole

- 25 A
- 32 A

- 0172075
- 0172175

Neutral pole

- 25 A
- 32 A

- 0172065
- 0172165

Junction block

Ground or Neutral

0172185

Auxiliary contact

NC/NO

0172179

IP65 Seal Kit

0174259

Replacement Handle

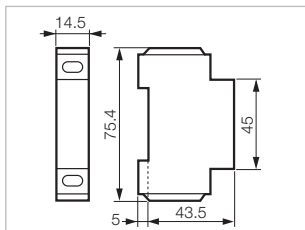
- 66 - Yellow/Red
- 66 - Grey

- 0172601
- 0174601



0172065

0172185



25A / 32A

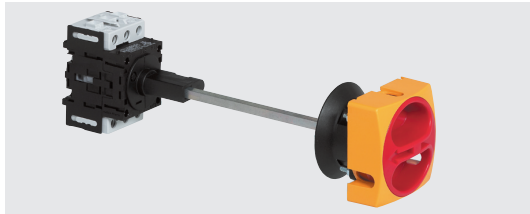
▶ DOOR INTERLOCK MOUNTING - LONG METAL SHAFT EXTENSION



PADLOCKABLE PRESENTATION

Yellow/Red Handle
Part Number

Grey Handle
Part Number



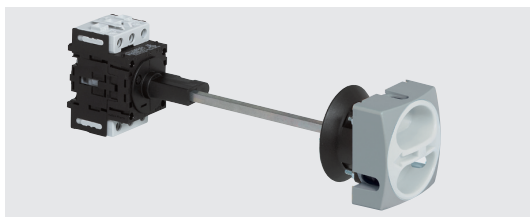
0165009LS

25 A

- 3P
- 3P + NC/NO
- 4P neutral on left
- 4P + NC/NO

- 0165009LS
- 0165019LS
- 0165029LS
- 0165039LS

- 0168009LS
- 0168019LS
- 0168029LS
- 0168039LS



0168109LS

32 A

- 3P
- 3P + NC/NO
- 4P neutral on left
- 4P + NC/NO

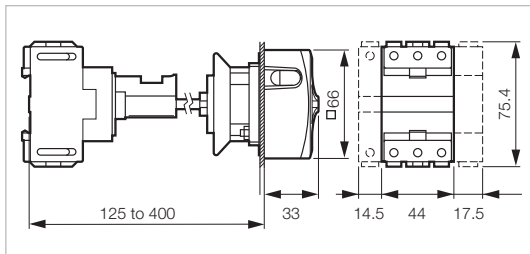
- 0165109LS
- 0165119LS
- 0165129LS
- 0165139LS

- 0168109LS
- 0168119LS
- 0168129LS
- 0168139LS

STANDARD VERSIONS IP40 RATED.

TO ORDER WITH IP65 GASKETS ADD -1 TO PART NUMBERS ABOVE.

IE. 0165009LS-1

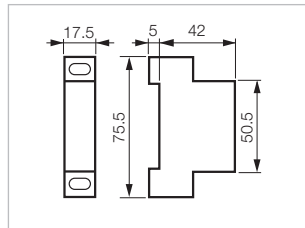


COMPONENTS AND ACCESSORIES

Part Number



0172179



3-pole switch body without handle

- 25 A
- 32 A

- 0172000
- 0172100

Additional pole

- 25 A
- 32 A

- 0172075
- 0172175

Neutral pole

- 25 A
- 32 A

- 0172065
- 0172165

Junction block

Ground or Neutral

0172185

Auxiliary contact

NC/NO

0172179

IP65 Seal Kit

0174259

Replacement Handle

- 66 - Yellow/Red
- 66 - Grey

- 0172601
- 0174601

25A / 32A

► ENCLOSURES

 Technical Info (p. 192)

PADLOCKABLE PRESENTATION



0172061

0174161

25 A

3P
3P + NC/NO
4P neutral on left
4P + NC/NO

Yellow/Red Handle
Part Number

0172061
0172071
0172081
0172091

Grey Handle
Part Number

0174061
0174071
0174081
0174091

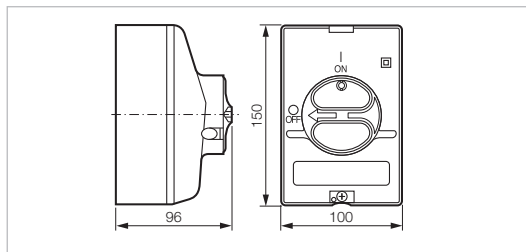
32 A

3P
3P+NC/NO
4P neutral on left
4P + NC/NO

0172161
0172171
0172181
0172191

0174161
0174171
0174181
0174191

STANDARD VERSIONS IP66 RATED.



Cable entries: 6 x PG16 and 4 x M25

PADLOCKABLE PRESENTATION



0172009

0174109

25 A

6P
6P + NC/NO

Yellow/Red Handle
Part Number

0172009
0172029

Grey Handle
Part Number

0174009
0174029

32 A

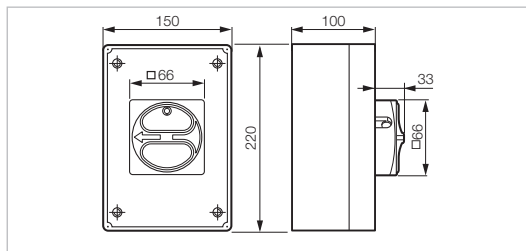
6P
6P+NC/NO

0172109
0172129

0174109
0174129

STANDARD VERSIONS IP40 RATED.

**TO ORDER WITH IP65 GASKETS ADD -6 TO PART NUMBERS ABOVE.
IE. 0172009-6**



Cable entries: 4 x PG21

CABLE GLANDS



PG16-GY

PG16
PG21

Cable Range 10mm - 14mm
Cable Range 13mm - 18mm

Part Number

PG16-GY
PG21-GY

25A / 32A

► ENCLOSURES

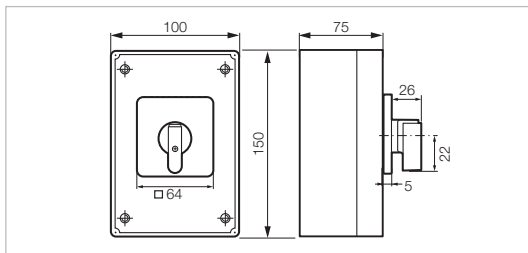
 Technical Info (p. 192)

NON- PADLOCKABLE PRESENTATION



0172062

0174162



Cable entries: 4 x PG16

25 A

3P
3P + NC/NO
4P neutral on left
4P + NC/NO

Yellow/Red Handle
Part Number

0172062
0172072
0172082
0172092

Grey Handle
Part Number

0174062
0174072
0174082
0174092

32 A

3P
3P+NC/NO
4P neutral on left
4P + NC/NO

0172162
0172172
0172182
0172192

0174162
0174172
0174182
0174192

STANDARD VERSIONS IP40 RATED.

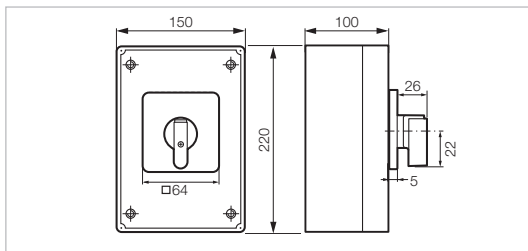
**TO ORDER WITH IP65 GASKETS ADD -6 TO PART NUMBERS ABOVE.
IE. 0172062-6**

NON-PADLOCKABLE PRESENTATION



0172019

0174119



Cable entries: 4 x PG21

25 A

6P
6P + NC/NO

Yellow/Red Handle
Part Number

0172019
0172039

Grey Handle
Part Number

0174019
0174039

32 A

6P
6P+NC/NO

0172119
0172139

0174119
0174139

STANDARD VERSIONS IP40 RATED.

**TO ORDER WITH IP65 GASKETS ADD -6 TO PART NUMBERS ABOVE.
IE. 0172019-6**

CABLE GLANDS



PG16-GY

PG16
PG21

Cable Range 10mm - 14mm
Cable Range 13mm - 18mm

Part Number

PG16-GY
PG21-GY

25A / 32A

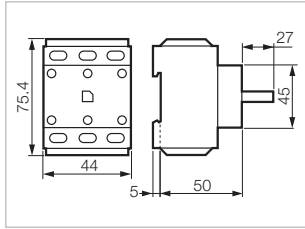
► BLOCKS

 Technical Info (p. 192)

Part Number



0172000



3-pole switch body without handle

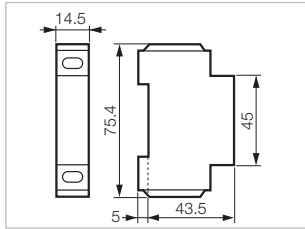
25 A
32 A

0172000
0172100



0172065

0172185



Additional pole
(for use in enclosure only)

25 A
32 A

0172075
0172175

Neutral pole

25 A
32 A

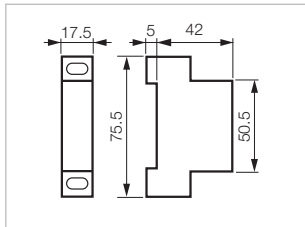
0172065
0172165

Junction block
Ground or Neutral

0172185



0172179



Auxiliary contact

NC/NO

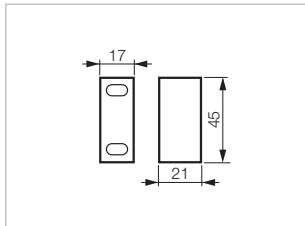
0172179

1 pole early break

0172195



0172195



25A / 32A

▶ HANDLES

 Technical Info (p. 192)

Part Number



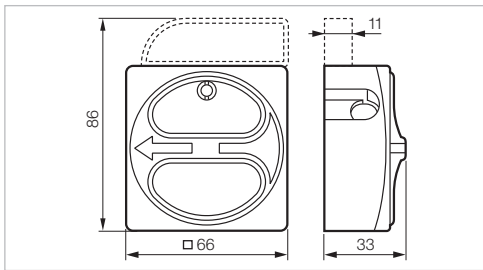
0172601

Padlockable presentation

Padlock with $\varnothing 6$ to 8 mm

- 66 - Yellow/Red
- 66 - Grey
- 66 - $\varnothing 22$ single-hole-mounting - Yellow/Red

0172601
0174601
0172603



0172602

Dim. Ref. 0172602

A: 64
 B: 80

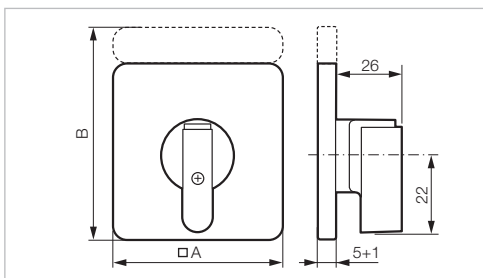
Dim. ref. 0172604

A: 48
 B: 65

With plate, frame and handle

- 64 - Yellow/Red
- 64 - Grey
- 48 - $\varnothing 22$ single-hole-mounting - Yellow/Red

0172602
0174602
0172604



25A / 32A

▶ EMPTY ENCLOSURES

 Technical Info (p. 192)

PADLOCKABLE PRESENTATION

Part Number



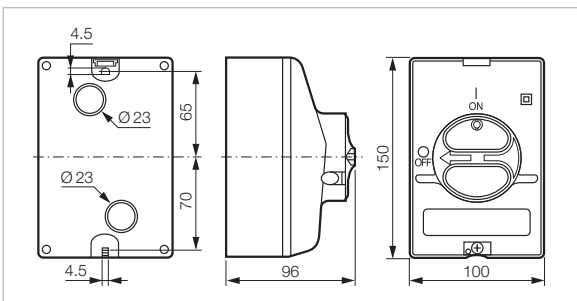
0172399

Dimensions 150 x 100 x 96 mm
 Supplied with padlockable handle,
 weatherproof seal and relay terminal
 For 3 and 4-pole switches with and without NC/NO
 Cable entries: 4 x PG16/M25

IP66-IK7

Grey base - yellow cover - red handle
 Grey base - grey cover - grey handle

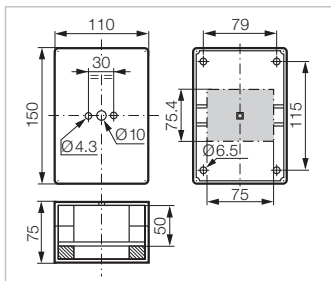
0172399
0174399



WITHOUT HANDLE



0172549

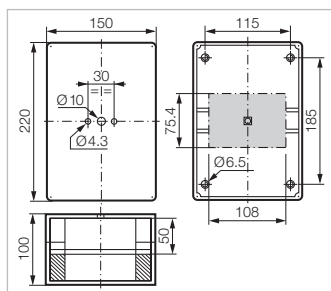


Grey - Up to 4 poles + auxiliary contact
 150 x 110 x 75 mm
 Cable entries: 4 x PG16

0172549



0172559



Grey - Up to 6 poles + auxiliary contact
 220 x 150 x 100 mm
 Cable entries: 4 x PG21

0172559

25A / 32A

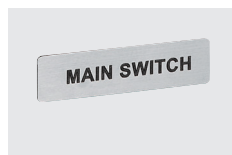
▶ ACCESSORIES

 Technical Info (p. 192)

Part Number



0172167



0174569



0172649



0174189



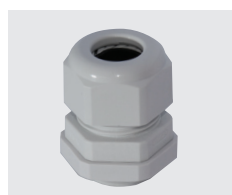
0174179



0174249



0172267



PG16-GY



SMT25

Terminal covers

For 3-pole body switch	0172167
For additional pole, neutral pole or junction block	0172177
For auxiliary contact NC/NO (pair)	0172189
For early break auxiliary contact	0172199

Connection terminal kit

Terminal connection for ground or neutral	0174449
---	---------

Self-adhesive plates (for enclosures)

Blank	0174599
Engraved MAIN SWITCH	0174569

Duty labels

Blank	0172629
Engraved MAIN SWITCH	0172649

Kit for clutch drive presentation

Short shaft without door interlock	0174189
Long shaft without door interlock	0174199
Without shaft and without door interlock	0174179

Kit for door interlock

0174249

IP 65 seal kits

For front mounting switches and enclosures	
Padlockable <input type="checkbox"/> 66 or plate and frame <input type="checkbox"/> 64 or <input type="checkbox"/> 72	0172267

For rear mounting switches with clutch drive	
Padlockable <input type="checkbox"/> 66 or plate and frame <input type="checkbox"/> 64 or <input type="checkbox"/> 72	0174259

Cable Glands

PG16	Cable Range 10mm - 14mm	PG16-GY
PG21	Cable Range 13mm - 18mm	PG21-GY

Stepped Gland

M25	Cable Range 5mm - 21mm	STM25
-----	------------------------	-------