

80A / 100A

▶ DOOR/PANEL MOUNTING

 Technical Info (p.192)

PADLOCKABLE PRESENTATION

Yellow/Red Handle
Part Number

Grey Handle
Part Number



0172401



0174501

80 A

- 3P
- 3P + NC/NO
- 4P neutral on left
- 4P + NC/NO

- 0172401
- 0172411
- 0172421
- 0172431

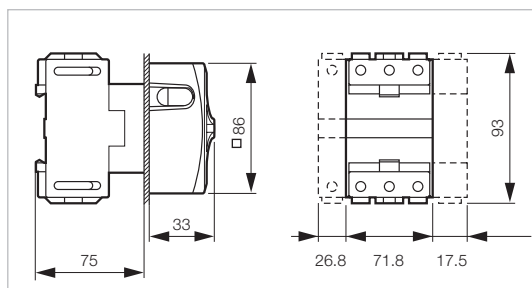
- 0174401
- 0174411
- 0174421
- 0174431

100 A

- 3P
- 3P+NC/NO
- 4P neutral on left
- 4P + NC/NO

- 0172501
- 0172511
- 0172521
- 0172531

- 0174501
- 0174511
- 0174521
- 0174531



STANDARD VERSIONS IP40 RATED.

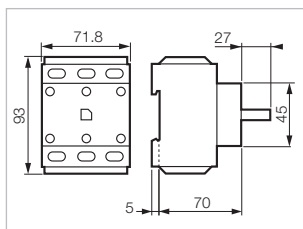
TO ORDER WITH IP65 GASKETS ADD -1 TO PART NUMBERS ABOVE.
IE. 0172401-1

COMPONENTS AND ACCESSORIES

Part Number



0172400



3-pole switch body without handle

- 80 A
- 100 A

- 0172400
- 0172500

Additional pole

- 80 A
- 100 A

- 0172475
- 0172575

Neutral pole

- 80 A
- 100 A

- 0172465
- 0172565

Junction block Ground or Neutral

- 0172585

Auxiliary contact NC/NO

- 0172179

IP65 Seal Kit

- 0172277

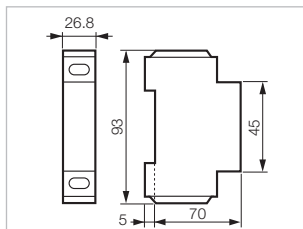
Replacement Handle

- 86 - Yellow/Red
- 86 - Grey

- 0172621
- 0174621



0172475



80A / 100A

▶ DOOR/PANEL MOUNTING



Technical Info (p.192)

NON- PADLOCKABLE PRESENTATION

Yellow/Red Handle
Part Number

Grey Handle
Part Number



0172402



0174502

80 A

- 3P
- 3P + NC/NO
- 4P neutral on left
- 4P + NC/NO

- 0172402
- 0172412
- 0172422
- 0172432

- 0174402
- 0174412
- 0174422
- 0174432

100 A

- 3P
- 3P + NC/NO
- 4P neutral on left
- 4P + NC/NO

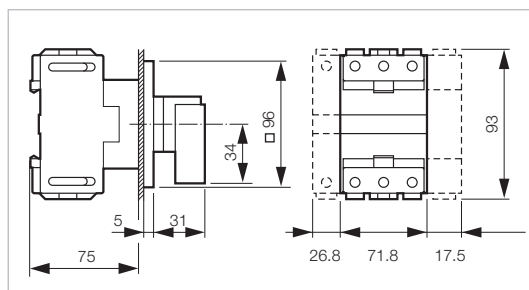
- 0172502
- 0172512
- 0172522
- 0172532

- 0174502
- 0174512
- 0174522
- 0174532

STANDARD VERSIONS IP40 RATED.

TO ORDER WITH IP65 GASKETS ADD -1 TO PART NUMBERS ABOVE.

IE. 0172402-1

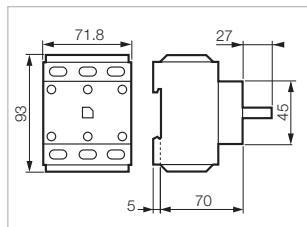


COMPONENTS AND ACCESSORIES

Part Number



0172400



3-pole switch body without handle

- 80 A
- 100 A

- 0172400
- 0172500

Additional pole

- 80 A
- 100 A

- 0172475
- 0172575

Neutral pole

- 80 A
- 100 A

- 0172465
- 0172565

Junction block

Ground or Neutral

0172585

Auxiliary contact

NC/NO

0172179

IP65 Seal Kit

0172277

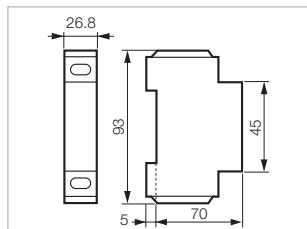
Replacement Handle

- 96 - Yellow/Red
- 96 - Grey

- 0172622
- 0174622



0172475



80A / 100A

► DIN-RAIL IN-PANEL MOUNTING



Technical Info (p.192)

PADLOCKABLE PRESENTATION

Grey Handle
Part Number



0174405

80 A

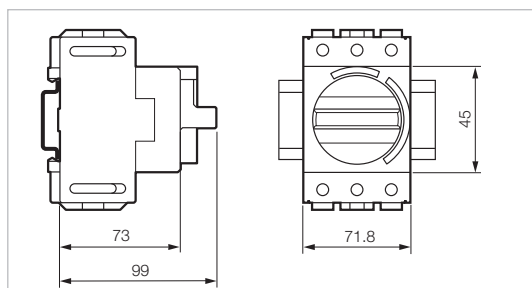
3P
3P + NC/NO
4P neutral on left
4P + NC/NO

0174405
0174415
0174425
0174435

100 A

3P
3P+NC/NO
4P neutral on left
4P + NC/NO

0174505
0174515
0174525
0174535

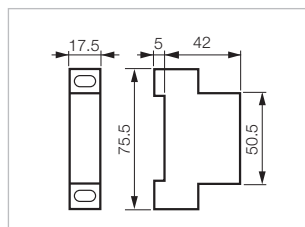


COMPONENTS AND ACCESSORIES

Part Number



0172179



3-pole switch body without handle

80 A
100 A

0172400
0172500

Additional pole

80 A
100 A

0172475
0172575

Neutral pole

80 A
100 A

0172465
0172565

Junction block

Ground or Neutral

0172585

Auxiliary contact

NC/NO

0172179

80A / 100A

▶ DOOR INTERLOCK MOUNTING - NO METAL SHAFT EXTENSION

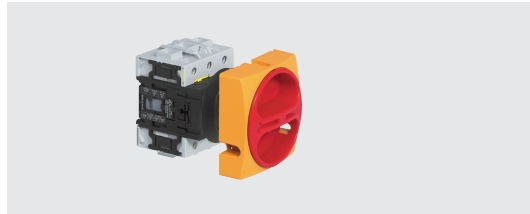


Technical Info (p.192)

PADLOCKABLE PRESENTATION

Yellow/Red Handle
Part Number

Grey Handle
Part Number



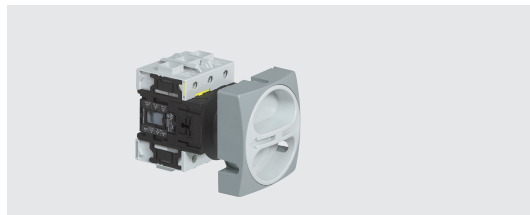
0165409NS

80 A

- 3P
- 3P + NC/NO
- 4P neutral on left
- 4P + NC/NO

- 0165409NS
- 0165419NS
- 0165429NS
- 0165439NS

- 0168409NS
- 0168419NS
- 0168429NS
- 0168439NS



0168509NS

100 A

- 3P
- 3P + NC/NO
- 4P neutral on left
- 4P + NC/NO

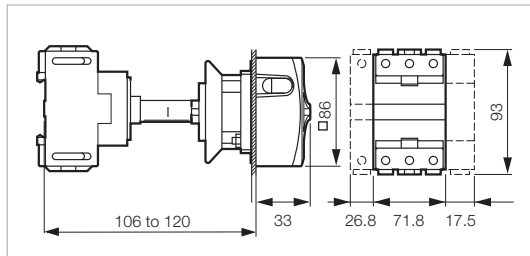
- 0165509NS
- 0165519NS
- 0165529NS
- 0165539NS

- 0168509NS
- 0168519NS
- 0168529NS
- 0168539NS

STANDARD VERSIONS IP40 RATED.

TO ORDER WITH IP65 GASKETS ADD -1 TO PART NUMBERS ABOVE.

IE. 0165409NS-1

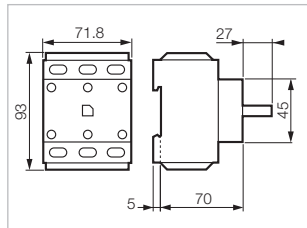


COMPONENTS AND ACCESSORIES

Part Number



0172400



3-pole switch body without handle

- 80 A
- 100 A

- 0172400
- 0172500

Additional pole

- 80 A
- 100 A

- 0172475
- 0172575

Neutral pole

- 80 A
- 100 A

- 0172465
- 0172565

Junction block

Ground or Neutral

0172585

Auxiliary contact

NC/NO

0172179

IP65 Seal Kit

0172269

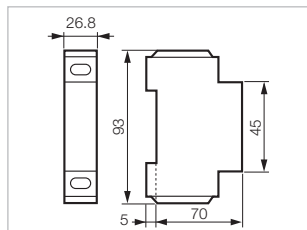
Replacement Handle

- 86 - Yellow/Red
- 86 - Grey

- 0172621
- 0174621



0172475



80A / 100A

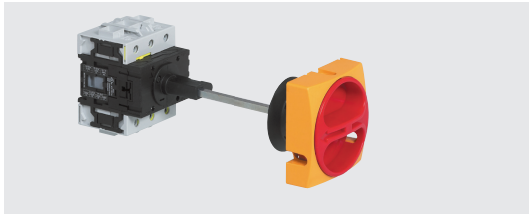
▶ DOOR INTERLOCK MOUNTING - SHORT METAL SHAFT EXTENSION



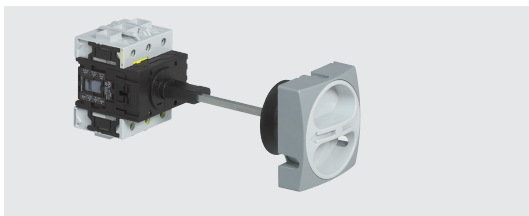
PADLOCKABLE PRESENTATION

Yellow/Red Handle
Part Number

Grey Handle
Part Number



0165409SS



0168509SS

80 A

- 3P
- 3P + NC/NO
- 4P neutral on left
- 4P + NC/NO

- 0165409SS
- 0165419SS
- 0165429SS
- 0165439SS

- 0168409SS
- 0168419SS
- 0168429SS
- 0168439SS

100 A

- 3P
- 3P + NC/NO
- 4P neutral on left
- 4P + NC/NO

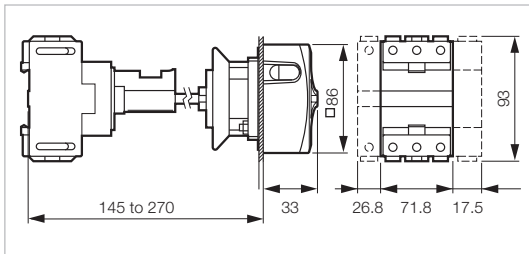
- 0165509SS
- 0165519SS
- 0165529SS
- 0165539SS

- 0168509SS
- 0168519SS
- 0168529SS
- 0168539SS

STANDARD VERSIONS IP40 RATED.

TO ORDER WITH IP65 GASKETS ADD -1 TO PART NUMBERS ABOVE.

IE. 0165409SS-1

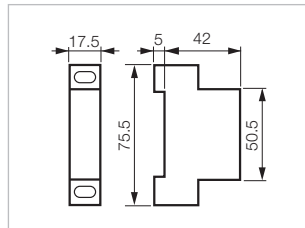


COMPONENTS AND ACCESSORIES

Part Number



0172179



3-pole switch body without handle

- 80 A
- 100 A

- 0172400
- 0172500

Additional pole

- 80 A
- 100 A

- 0172475
- 0172575

Neutral pole

- 80 A
- 100 A

- 0172465
- 0172565

Junction block

Ground or Neutral

0172585

Auxiliary contact

NC/NO

0172179

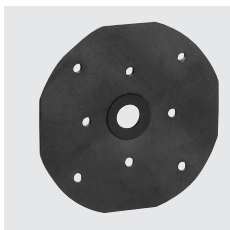
IP65 Seal Kit

0174269

Replacement Handle

- 86 - Yellow/Red
- 86 - Grey

- 0172621
- 0174621



0174269

80A / 100A

▶ DOOR INTERLOCK MOUNTING - LONG METAL SHAFT EXTENSION

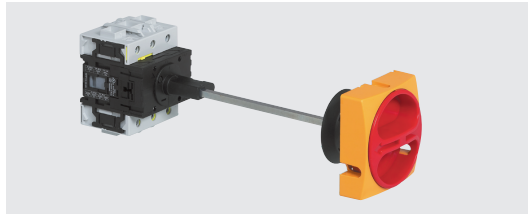


Technical Info (p.192)

PADLOCKABLE PRESENTATION

Yellow/Red Handle
Part Number

Grey Handle
Part Number



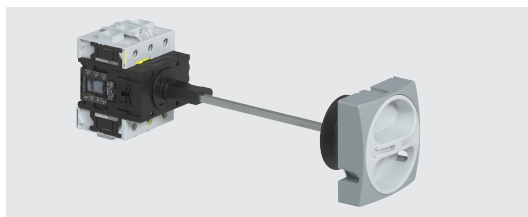
0165409LS

80 A

- 3P
- 3P + NC/NO
- 4P neutral on left
- 4P + NC/NO

- 0165409LS
- 0165419LS
- 0165429LS
- 0165439LS

- 0168409LS
- 0168419LS
- 0168429LS
- 0168439LS



0168509LS

100 A

- 3P
- 3P + NC/NO
- 4P neutral on left
- 4P + NC/NO

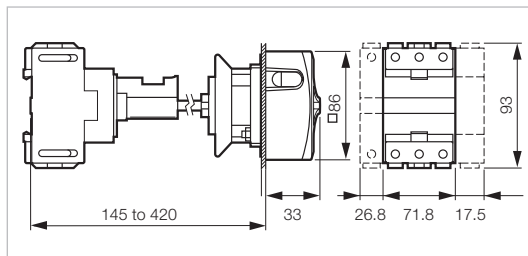
- 0165509LS
- 0165519LS
- 0165529LS
- 0165539LS

- 0168509LS
- 0168519LS
- 0168529LS
- 0168539LS

STANDARD VERSIONS IP40 RATED.

TO ORDER WITH IP65 GASKETS ADD -1 TO PART NUMBERS ABOVE.

IE. 0165409LS-1

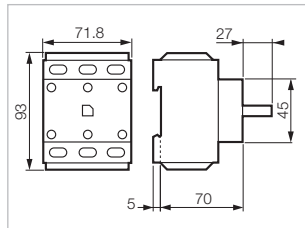


COMPONENTS AND ACCESSORIES

Part Number



0172400



3-pole switch body without handle

- 80 A
- 100 A

- 0172400
- 0172500

Additional pole

- 80 A
- 100 A

- 0172475
- 0172575

Neutral pole

- 80 A
- 100 A

- 0172465
- 0172565

Junction block

Ground or Neutral

0172585

Auxiliary contact

NC/NO

0172179

IP65 Seal Kit

0174269

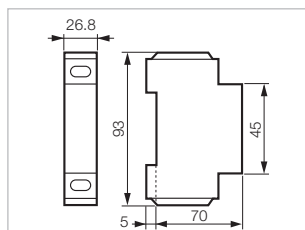
Replacement Handle

- 86 - Yellow/Red
- 86 - Grey

- 0172621
- 0174621



0172475



80A / 100A

► ENCLOSURES



PADLOCKABLE PRESENTATION

Yellow/Red Handle
Part Number

Grey Handle
Part Number



0172461

0174561

80 A

3P
3P + NC/NO
4P neutral on left
4P + NC/NO

0172461
0172471
0172481
0172491

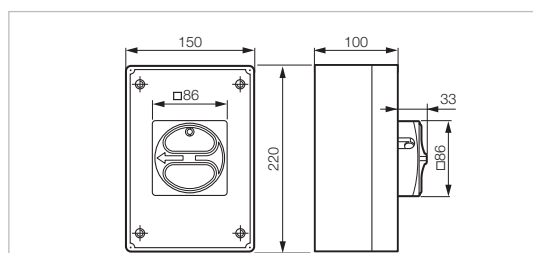
0174461
0174471
0174481
0174491

100 A

3P
3P+NC/NO
4P neutral on left
4P + NC/NO

0172561
0172571
0172581
0172591

0174561
0174571
0174581
0174591



Cable entries: 4 x PG29

STANDARD VERSIONS IP40 RATED.

TO ORDER WITH IP65 GASKETS ADD -6 TO PART NUMBERS ABOVE.
IE. **0172461-6**

PADLOCKABLE PRESENTATION

Yellow/Red Handle
Part Number

Grey Handle
Part Number



0172409

0174509

80 A

6P
6P + NC/NO

0172409
0172429

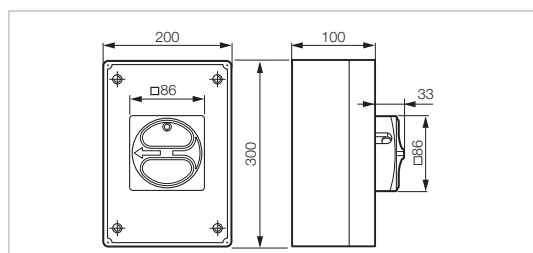
0174409
0174429

100 A

6P
6P+NC/NO

0172509
0172529

0174509
0174529



Cable entries: 4 x PG29 and 4 x PG21

STANDARD VERSIONS IP40 RATED.

TO ORDER WITH IP65 GASKETS ADD -6 TO PART NUMBERS ABOVE.
IE. **0172409-6**

CABLE GLANDS

Part Number



PG21-GY

PG21
PG29

Cable Range 13mm - 18mm
Cable Range 18mm - 25mm

PG21-GY
PG29-GY

80A / 100A

ENCLOSURES

 Technical Info (p. 192)

NON- PADLOCKABLE PRESENTATION



0172462

0174562

80 A

- 3P
- 3P + NC/NO
- 4P neutral on left
- 4P + NC/NO

Yellow/Red Handle
Part Number

- 0172462
- 0172472
- 0172482
- 0172492

Grey Handle
Part Number

- 0174462
- 0174472
- 0174482
- 0174492

100 A

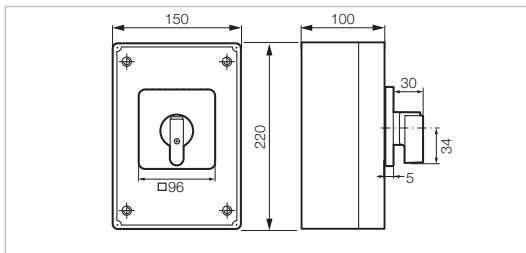
- 3P
- 3P+NC/NO
- 4P neutral on left
- 4P + NC/NO

- 0172562
- 0172572
- 0172582
- 0172592

- 0174562
- 0174572
- 0174582
- 0174592

STANDARD VERSIONS IP40 RATED.

**TO ORDER WITH IP65 GASKETS ADD -6 TO PART NUMBERS ABOVE.
IE. 0172462-6**



Cable entries: 4 x PG29

NON- PADLOCKABLE PRESENTATION



0172419

0174519

80 A

- 6P
- 6P + NC/NO

Yellow/Red Handle
Part Number

- 0172419
- 0172439

Grey Handle
Part Number

- 0174419
- 0174439

100 A

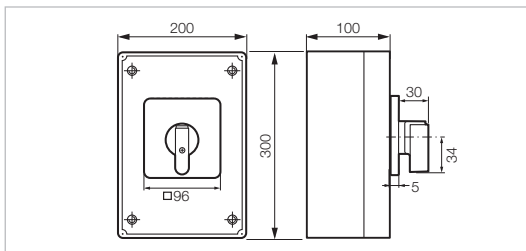
- 6P
- 6P+NC/NO

- 0172519
- 0172539

- 0174519
- 0174539

STANDARD VERSIONS IP40 RATED.

**TO ORDER WITH IP65 GASKETS ADD -6 TO PART NUMBERS ABOVE.
IE. 0172419-6**



Cable entries: 4 x PG29 and 4 x PG21

CABLE GLANDS



PG21-GY

PG21
PG29

Cable Range 13mm - 18mm
Cable Range 18mm - 25mm

Part Number

PG21-GY
PG29-GY

80A / 100A

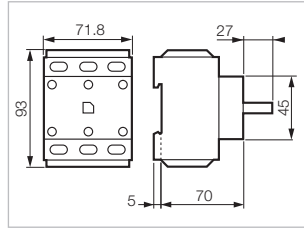
► BLOCKS

 Technical Info (p. 192)

Part Number



0172400



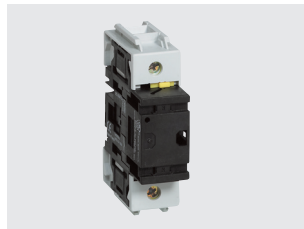
3-pole body switch without presentation

80 A
100 A

0172400
0172500



0172475



0172465

Additional pole
(for use in enclosure only)

80 A
100 A

0172475
0172575

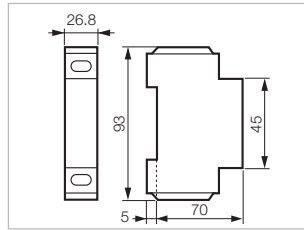
Neutral pole

80 A
100 A

0172465
0172565



0172585

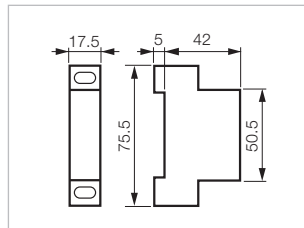


Junction block
Ground or Neutral

0172585



0172179



Auxiliary contact

NC/NO

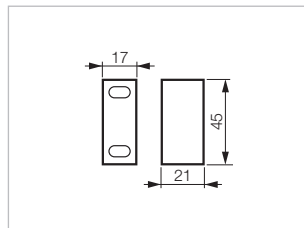
0172179

1 pole early break

0172595



0172595



80A / 100A

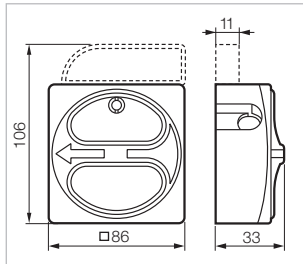
► HANDLES

 Technical Info (p. 192)

Part Number



0172621



Padlockable presentation

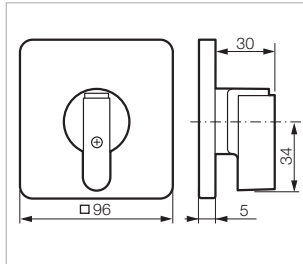
Padlock: \varnothing 6 to 8 mm

- 86 - Yellow/Red
- 86 - Grey

0172621
0174621



0172622



With plate, frame and handle

- 96 - Yellow/Red
- 96 - Grey

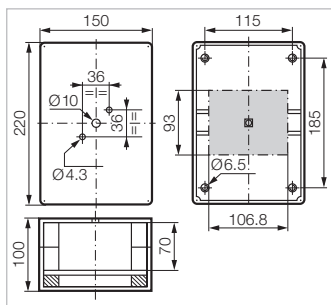
0172622
0174622

► EMPTY ENCLOSURES

WITHOUT HANDLE



0172589

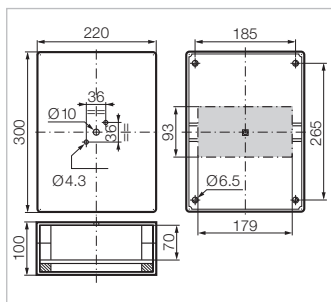


Grey - Up to 3 poles + auxiliary contact
220 x 150 x 100 mm
Cable entries: 4 x PG29

0172589



0172599



Grey - Up to 6 poles + auxiliary contact
300 x 200 x 100 mm
Cable entries: 4 x PG29 and 4 x PG21

0172599

80A / 100A

▶ ACCESSORIES

 Technical Info (p. 192)

Part Number



0172567

Terminal covers

For 3-pole body switch
 For additional pole, neutral pole or junction block
 For NC/NO auxiliary contact (pair)
 For early break auxiliary contact

0172567
0172577
0172189
0172199



0172649

Duty labels

Blank
 Engraved MAIN SWITCH

0172629
0172649



0174189

Kit for clutch drive presentation

Short shaft without door interlock
 Long shaft without door interlock
 Without shaft and without door interlock

0174189
0174199
0174179

kit for door interlock

0174249



0174179



0174249

IP 65 seal kit

For front mounting switches and enclosures

Padlockable 86 or plate and frame 96

0172277

For rear mounting with clutch drive

Padlockable 86 or plate and frame 96

0174269

Cable Glands

PG21 Cable Range 13mm - 18mm
 PG29 Cable Range 18mm - 25mm

PG21-GY
PG29-GY



0172277



PG21-GY