

Accessories ø 30

▶ LEGEND PLATES - EMERGENCY STOP

PLASTIC LEGEND PLATES

Part Number



UWE80300

Plastic - Yellow with black engraving

60mm diameter
Blank
EMERGENCY STOP

UWE60
UWE60300

70mm diameter
Blank
EMERGENCY STOP

UWE70
UWE70300

80mm diameter
Blank
EMERGENCY STOP

UWE80
UWE80300

NOTE:

1) Custom diameters and engravings available please contact us for details.

METAL LEGEND PLATES



UE00300

Metal - Yellow with black lettering

80mm diameter
EMERGENCY STOP

UE00300

Accessories ø 30

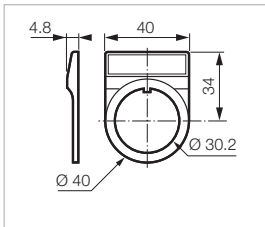
▶ COMPLETE LEGEND PLATES (FRAME + INSERT)

Standard model - 40 x 54 mm

Part Number



UP39



Round shape
Black frame and legend plate
2 lines maximum, 18 characters per line

WITHOUT ENGRAVING

- Red
- Black
- Alu

UP31
UP33
UP39

WITH TEXT OR SYMBOL (see p. 80 to 83)

Code to be added at the end of the part number.
For custom text or symbol please contact us.

- Red - white engraving
- Black - white engraving
- Alu - black engraving

UP31□□□□
UP33□□□□
UP39□□□□

PROTECTIVE MASK FOR LEGEND PLATE (PAPER OR OTHER ...)

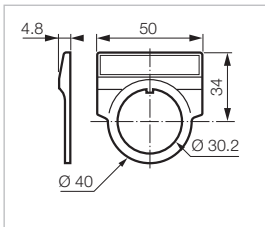
- Transparent

UP37

Large model - 50 x 54 mm



UG39



Round shape
Black frame and legend plate
2 lines maximum, 24 characters per line

WITHOUT ENGRAVING

- Red
- Black
- Alu

UG31
UG33
UG39

WITH TEXT OR SYMBOL (see p. 80 to 83)

Code to be added at the end of the part number.
For custom text or symbol please contact us.

- Red - white engraving
- Black - white engraving
- Alu - black engraving

UG31□□□□
UG33□□□□
UG39□□□□

PROTECTIVE MASK FOR LEGEND PLATE (PAPER OR OTHER ...)

- Transparent

UG37

Accessories ø 30

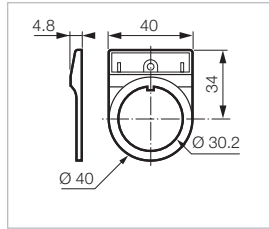
▶ LEGEND PLATES - FRAMES ONLY

Standard model

Part Number



UP3



For use with standard model legend plate inserts

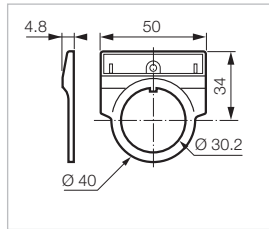
- Black

UP3

Large model



UG3



For use with large model legend plate inserts

- Black

UG3

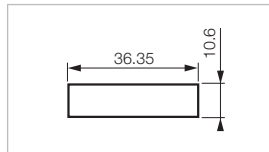
▶ LEGEND PLATES - INSERTS ONLY

TO BE ENGRAVED

Standard model



IB1



2 lines maximum
18 characters per line
For use with standard model legend plate frames

WITHOUT ENGRAVING

- Red
- Black
- Alu

IB1

IB3

IB9

WITH TEXT OR SYMBOL (see p. 80 to 83)

Code to be added at the end of the part number.
For custom text or symbol please contact us.

- Red - white engraving
- Black - white engraving
- Alu - black engraving

IB1□□□□

IB3□□□□

IB9□□□□

PROTECTIVE MASK FOR LEGEND PLATE (PAPER OR OTHER ...)

- Transparent

IB7

Accessories ø 30

▶ LEGEND PLATES - INSERTS ONLY

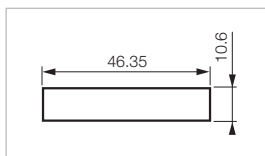
TO BE ENGRAVED

Large model

Part Number



IC3



2 lines maximum
18 characters per line
For use with standard model legend plate frames

WITHOUT ENGRAVING

- Red
- Black
- Alu

IC1
IC3
IC9

WITH TEXT OR SYMBOL (see p. 80 to 83)

Code to be added at the end of the part number.
For custom text or symbol please contact us.

- Red - white engraving
- Black - white engraving
- Alu - black engraving

IC1□□□
IC3□□□
IC9□□□

PROTECTIVE MASK FOR LEGEND PLATE (PAPER OR OTHER ...)

- Transparent

IC7

▶ BUTTON PLATES

FOR ILLUMINATED FLUSH BUTTONS



UE02

2 lines maximum, 10 characters per line
To be inserted under the button

Without engraving

- Transparent

UE02

WITH TEXT OR SYMBOL (see p. 80 to 83)

Code to be added at the end of the part number.
For custom text or symbol please contact us.

- Transparent (black engraving)

UE02□□□

FOR PILOT LIGHTS



UE10

2 lines maximum, 12 characters per line
To be inserted under Smooth lens Pilot Light lens

Without engraving

- Transparent

UE10

WITH TEXT OR SYMBOL (see p. 80 to 83)

Code to be added at the end of the part number.
For custom text or symbol please contact us.

- Transparent (black engraving)

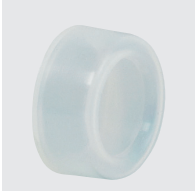
UE10□□□

Accessories ø 30

► MISCELLANEOUS

SROUD FOR FLUSH BUTTONS

Part Number

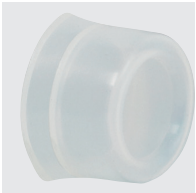


○ Transparent

UA0228

UA0228

SHROUD FOR ADJUSTABLE MECHANICAL BUTTONS



○ Transparent

UA0219

UA0219

STANDARD BEZEL



Height 13 mm

Brilliant chrome plastic
Black plastic
Grey plastic
Matt chrome plastic bezel
Matt chrome brass

UA0011
UA0012
UA0013
UA0016
UA0014

UA0011

DEEP BEZEL

For flush push-buttons only



Height 20 mm

Brilliant chrome brass

UA0202

UA0202

BEZEL FOR MECHANICAL ACTUATOR



Height 20 mm

Brilliant chrome plastic
Black plastic
Grey plastic
Brilliant chrome brass

UA0111
UA0112
UA0113
UA0114

UA0112

Accessories ϕ 30

► MISCELLANEOUS

FIXING TOOL

Part Number



Fixing tool ϕ 22/ ϕ 30

WA0210

WA0210

BLANKING PLUG



● Grey

UA0215

UA0215

ANTI-ROTATION RING



Anti-rotation ring

UA0209

UA0209

LOCKING NUT

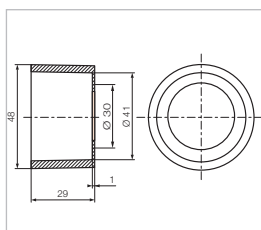
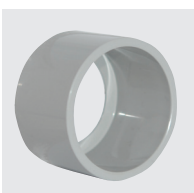


Plastic locking nut for 30mm operators

0908005V

0908005V

GUARD



For spring return button and spring return mushroom head
(max. ϕ 40)

UA0225

UA0225