

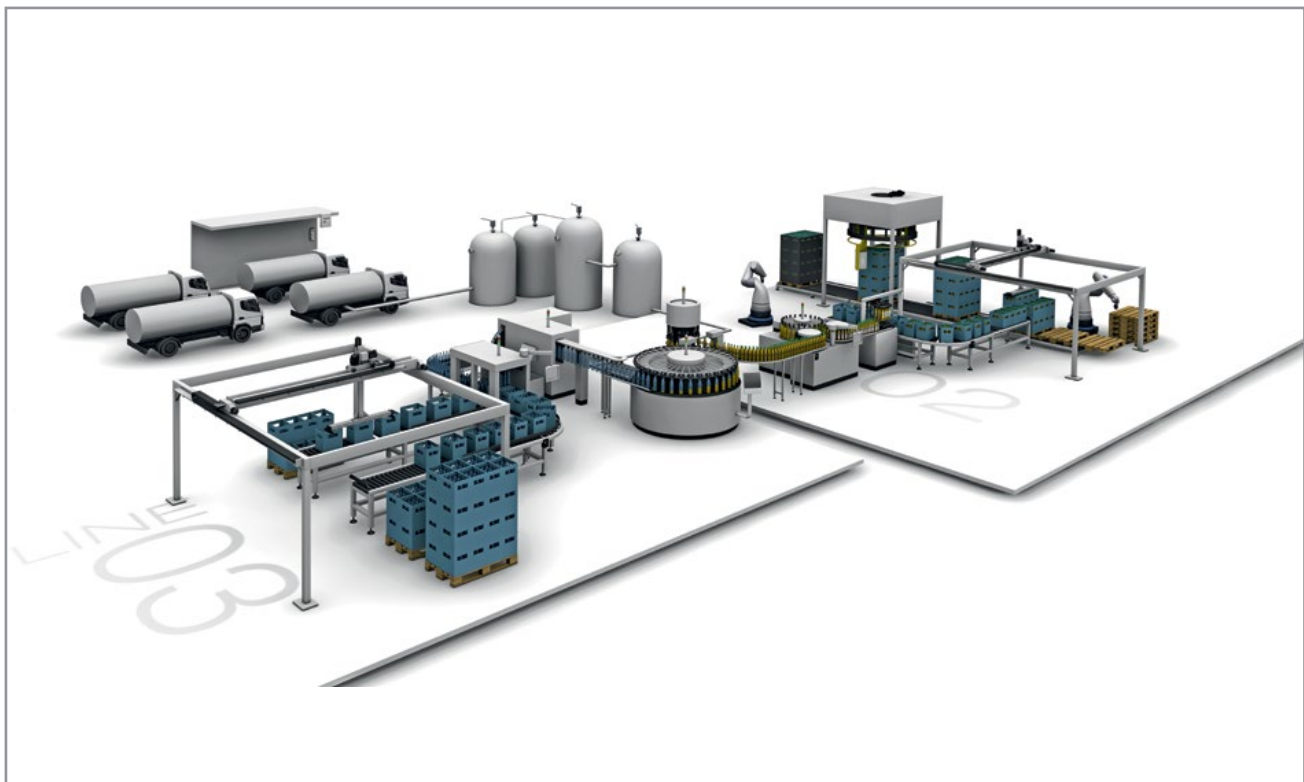
IP69K Washdown

Sensors, Cables & I/O for Food & Beverage

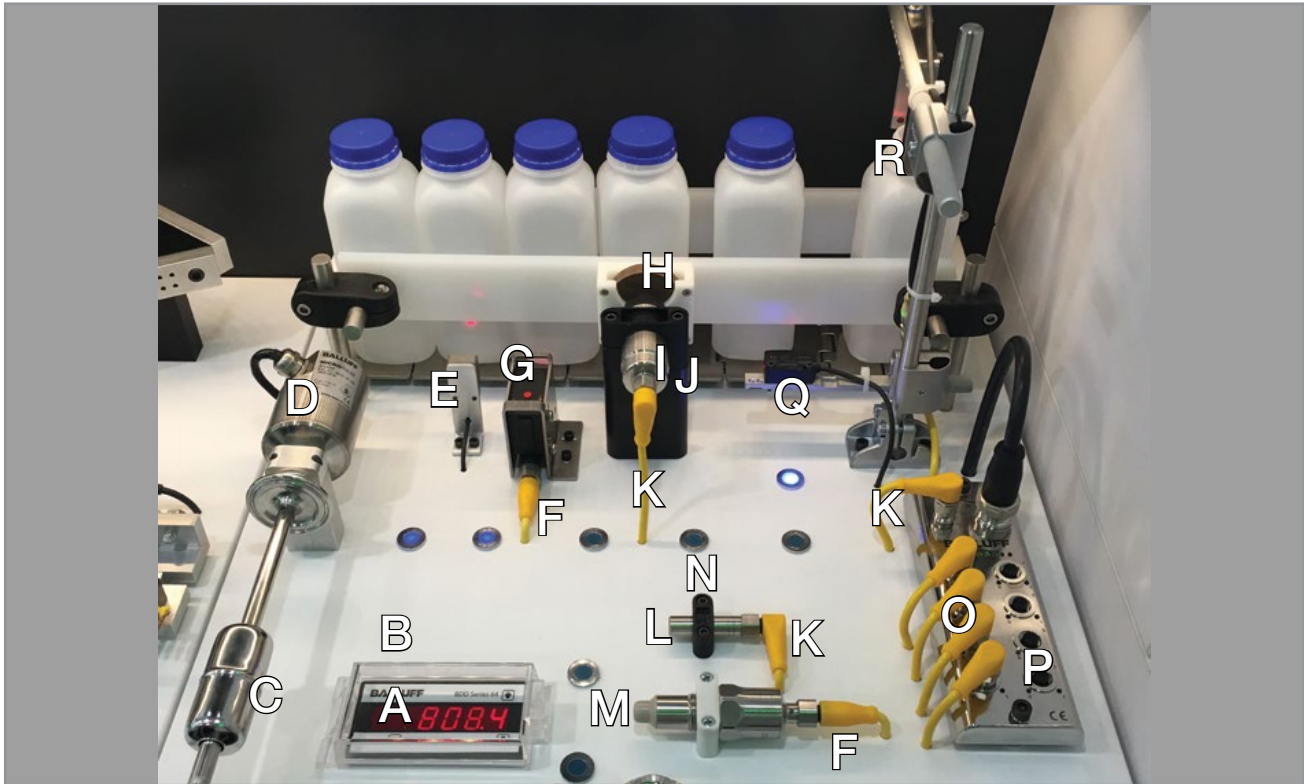
When working in automated food and beverage manufacturing segments like dairy, meat, filling and bottling, components that can survive in sanitary, hygienic and aseptic environments become necessary. Specifications for equipment look to reduce and remove areas for harboring bacteria. Poor survivability for automation components during washdown can become a major cause of downtime and lost production during changeovers and cleaning processes.

Balluff is utilized for manufacturing automation in four distinct applications inside a food and beverage facility: process automation, factory automation, flexible manufacturing and traceability.

- Sensing technologies like photoelectric, inductive, capacitive, and linear position
- Industrial RFID technologies & connectivity technologies
- Individual products with testing & ratings: FDA, 3A, EHEDG, ECOLAB
- RFID technologies can be used to support FSAM Hazard Analysis & Risk-based preventive controls implementations



Dairy, Filling, & Form/Fill/Seal Applications



Letter	Order Code	Description
A	BAE004R	LED digital display, 5 digit, 0...10V/4...20mA input
B	BAM0130	NEMA 4X IP65 cover for BDD 640-series LCD display
C	BAM01A2	Float for sanitary fill level sensor, stainless steel, 31 mm diameter, With pin
D	BTL234Y	Micropulse linear position sensor, Sanitary rod style, 0...10V output, 115 mm Stroke length
E	BOS021K	Photoelectric sensor, R01E series, PNP, NO, Sn= 100m, 20x9x32 mm, Diffuse, IP69K
F	BCC0AH1	Connector/cable, M8 Female straight, PVC, yellow jacket, 2 m, IP69K
G	BOS0171	Photoelectric sensor, 23K series, Push-pull PNP+NPN, NO/NC, Sn= 2m, 23x52.4x51 mm, Diffuse, IP69K
H	BIS00Y7	Data carrier, 736 bytes, High temperature, IP69K
I	BIS0157	RFID read/write head processor, BIS M series, 1.4404 housing material, IO-Link, 30 mm smooth, IP69K
J	BAM00HN	M30 Mounting holder with a custom standoff, ECOLAB
K	BCC0AH5	Connector/cable, M8 Female 90° angle, PVC, yellow jacket, 2 m, IP69K
L	BES0430	Inductive sensor, Connector, PNP, NO, Sn= 2 mm, Flush (shielded), 12 mm, IP69K
M	BES011F	Capacitive sensor, Connector, PNP, NO, Non-flush, M12x, Advanced SmartLevel
N	BAM00A2	M8 Mounting clamp
O	BCC0AHJ	Connector/cable, M12 Female 90° angle, PVC, yellow jacket, 2 m, IP69K
P	BNI008F	IP69K IO-Link I/O hub for high pressure washdown area, ECOLAB certified, 16 Configurable I/O
Q	BOS01LN	Photoelectric sensor, 6K series, Block, PNP, NO/NC, Sn= 800 mm, 12x21.6x37.9 mm, Diffuse, IP69K
R	BGL004L	Slot sensor, Through-beam/slot, PNP, NO/NC, PUR M12x1, 12x86x85 mm, 50 mm, IP69K