



- ▶ Designed for high vacuum applications up to 10^{-8} mbar
- ▶ Screw-in attachment for installation in the walls of vacuum chambers
- ▶ VITON O-Ring seal
- ▶ High resolution
- ▶ Approved, robust construction

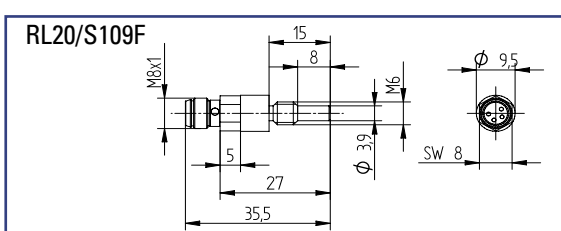


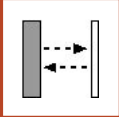
VACUUM REFLECTIVE BEAM SENSOR
for separate amplifier

▶ **TECHNICAL DATA**

MODEL	RL20/S109F
Light type	infrared 880nm
Operating temperature	-10°C to +55°C
Protection class	IP67
Sensing distance	12mm
Connection type	M8 with connector
Dimensions	M6 mounting thread; total length 35,5 mm
Housing material	stainless steel
Mounting	screw-in attachment

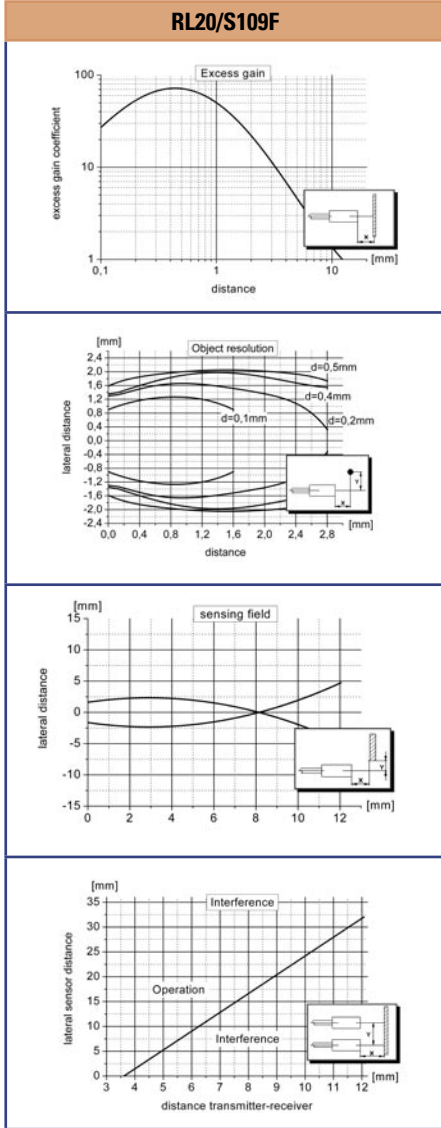
▶ **DIMENSIONS** Measurements in mm. Subject to technical change.





RL20/S109F

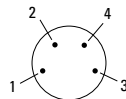
► **GRAPHS** (All Graphs showing typical data with STM amplifier.)



► **PIN CONNECTION**

M8, 4pin male

- 1 + receiver (green)
- 2 - receiver (black)
- 4 - emitter (white)
- 3 + emitter (red)



connector side

PART DESIGNATION

RL20/S109F - 14

Please note, for correct operation, an adapter cable and a separate amplifier is required.