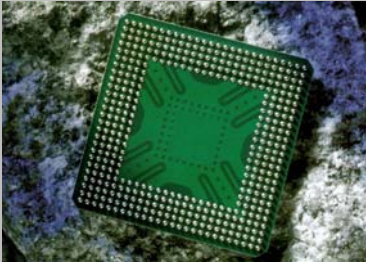


BarcoSilex

IP overview

V12.6



Barco Silex design expertise is made available through a wide portfolio of IP cores, with a strong focus on high performance standardized **image processing**, and **encryption functions**. All these IP cores have been designed and fully validated by Barco Silex and are hardware proven, which guarantees high IP quality as well as best support during your integration phase.

Deliverables include:

- RTL code or netlist (depending on license type and product)
- Functional simulation testbench
- Synthesis and implementation scripts
- Full documentation

For most of the IP cores, we provide simulation models and design kit.

Our IP cores offer the fastest and most efficient way of integration of complex functionalities.

Our high-quality IP provide short time to market on FPGAs or ASICs.

✓	Video and Image processing	<ul style="list-style-type: none">▪ Multi-channel JPEG 2000 Encoder▪ Multi-channel JPEG 2000 Decoder▪ Sub-frame latency J2K Decoder▪ Sub-frame latency J2K Encoder▪ Fast JPEG color Decoder▪ Fast JPEG color Encoder▪ VC-2 Low delay Encoder	<ul style="list-style-type: none">BA110BA109BA129BA130BA115BA116BA140
✓	Crypto and Security	<ul style="list-style-type: none">▪ Cryptographic Co-processor for Hardware Acceleration▪ Public Key IP Core for RSA, ECC, ECDSA and ECDH 4EP▪ AES multi-purpose crypto engine (ECB, CTR, CBC/CMAC, OFB, CFB...)▪ Scalable AES-GCM/GMAC/CTR IP Core▪ Scalable AES-CCM/CMAC/CTR IP Core▪ Scalable AES-XTS IP Core▪ True/Deterministic Random Number Generator IP Core▪ SHA1, SHA2 and HMAC IP Core▪ Triple DES (3DES) IP Core	<ul style="list-style-type: none">BA450BA414EPBA411E-FLEXBA415BA411E-CCMBA411E-XTSBA431BA413BA412
✓	Others	<ul style="list-style-type: none">▪ PCI Express (PCIe)Endpoint DMA▪ Arinc-429 Rx /Tx▪ Memory Controller DDR2/DDR3	<ul style="list-style-type: none">BA611BA511BA317

For more information contact:

e-mail: barco-silex@barco.com

Web: www.barco-silex.com

International: + 32 (0)10 454 904

France: + 33 (0)4 42 16 41 06

