

### Aluminum Nitride

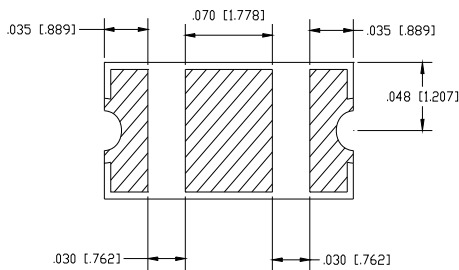
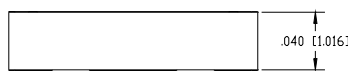
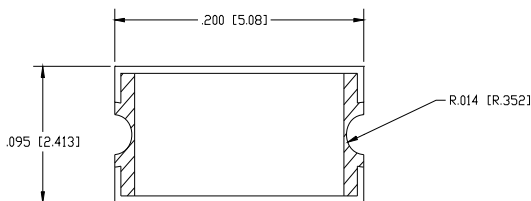
### SURFACE MOUNT RESISTOR

#### Features:

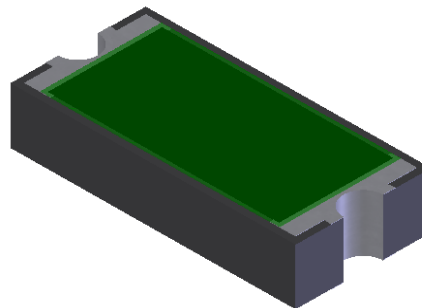
- ◆ Aluminum Nitride Material
- ◆ 20 Watt Input Power
- ◆ Surface Mountable

#### General Description:

The RYC2010CT-XXXX\*JN-2T is a surface mountable high power chip resistor ideal for small assemblies. It offers an input power of 20 watts, while maintaining a constant mounting surface temperature of 100°C. **\*See below for ordering options.**



Dimensions in inches [mm]  
Tolerance ± .010 [.254]  
unless otherwise stated

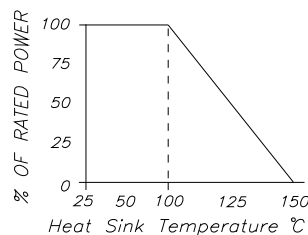


\*XXXX

Ohms

- 0.5....R 500
- 1 .....1R 00
- 10 .....10R 0
- 50.....50R 0
- 100...1000
- 150...1500
- 1K.....1001
- 10K...1002
- 100K.1003
- 470K.4703
- 1M ....1004

DERATING CURVE:



Sample Part Number:  
RYC2010CT-1000JN-2T  
(100 Ohms)

Parameter	Min.	Typ.	Max.	Units
Resistance		+/- 5%		Ohms
Input Power			20	Watts
Mounting Surface Temperature			100	°C

Barry Industries reserves the right to change part number and or process without notification.

Barry Industries, Inc., 60 Walton St., Attleboro, MA 02703 T: 508-226-3350 F: 508-226-3317 E-mail: sales@barryind.com

Barry is ISO 9001:2000 Certified by



Origination Date	Revision Date	Rev.
04/13/04	10/28/08	C