



WWW.BARRYIND.COM

# RP0505ZZ-XXXXWN-YY\*

## BeO or Alumina

## WRAP AROUND CHIP RESISTOR

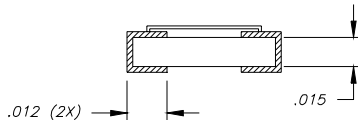
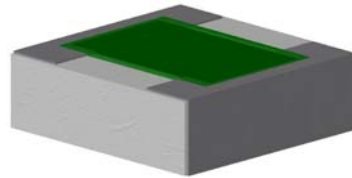
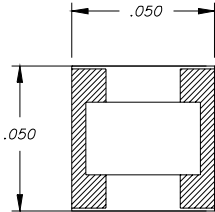
### Features:

- ◆ BeO or Alumina material
- ◆ Wrap Around
- ◆ Available in .5 ohm to 1 Mohm

### General Description:

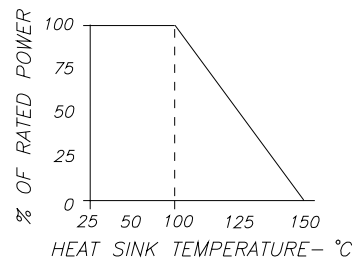
The RP0505ZZ-XXXXWN-YY\* series is a wrap around style chip resistor. It offers a small package design available in BeO or Alumina material.

\* See below for ordering options.



- All Dimensions in inches
- Tolerance  $\pm .005$
- Full part number (RP0505ZZ-XXXXWN-YY)
- Example part number (RP0505CT-50R0JN-91)
- Dimensions apply before tinning

DERATING CURVE:



**\*R P 0505 ZZ - XXXX W N - YY**

**Resistor** (R)      **Size** (0505)      **Ohms** (XXXX)      **(N)ormal Inspection** (N)      **Thickness and Material** (YY)

**Wrap Around** (P)      **Termination Material and Finish** (R)      **Tolerance** (YY)

<p><b>BA</b> - available on Alumina: Palladium Silver, Epoxy Mount, <b>RoHS Compliant</b></p> <p><b>CB</b> - available on Alumina &amp; BeO: Tin Lead over Nickel over Silver, Solder Mount, NOT RoHS</p> <p><b>CT</b> - available on Alumina &amp; BeO: Matte Tin over Nickel over Silver, Solder Mount, <b>RoHS Compliant</b></p> <p><b>GA</b> - available on Alumina: Gold, Epoxy Mount, Wire Bond, <b>RoHS Compliant</b></p> <p><b>JA</b> - available on BeO: Gold over Platinum Gold, Epoxy Mount, Wire Bond, <b>RoHS Compliant</b></p>	<table border="0"> <tr><td>0.5</td><td>·</td><td>R500</td></tr> <tr><td>1</td><td>·</td><td>1R00</td></tr> <tr><td>10</td><td>·</td><td>10R0</td></tr> <tr><td>50</td><td>·</td><td>50R0</td></tr> <tr><td>100</td><td>·</td><td>1000</td></tr> <tr><td>150</td><td>·</td><td>1500</td></tr> <tr><td>1K</td><td>·</td><td>1001</td></tr> <tr><td>10K</td><td>·</td><td>1002</td></tr> <tr><td>100K</td><td>·</td><td>1003</td></tr> <tr><td>470K</td><td>·</td><td>4703</td></tr> <tr><td>1M</td><td>·</td><td>1004</td></tr> </table>	0.5	·	R500	1	·	1R00	10	·	10R0	50	·	50R0	100	·	1000	150	·	1500	1K	·	1001	10K	·	1002	100K	·	1003	470K	·	4703	1M	·	1004	<table border="0"> <tr><td>F</td><td>-</td><td>1%</td></tr> <tr><td>G</td><td>-</td><td>2%</td></tr> <tr><td>J</td><td>-</td><td>5%</td></tr> <tr><td>K</td><td>-</td><td>10%</td></tr> <tr><td>L</td><td>-</td><td>20%</td></tr> <tr><td>X</td><td>-</td><td>Special</td></tr> </table>	F	-	1%	G	-	2%	J	-	5%	K	-	10%	L	-	20%	X	-	Special
0.5	·	R500																																																			
1	·	1R00																																																			
10	·	10R0																																																			
50	·	50R0																																																			
100	·	1000																																																			
150	·	1500																																																			
1K	·	1001																																																			
10K	·	1002																																																			
100K	·	1003																																																			
470K	·	4703																																																			
1M	·	1004																																																			
F	-	1%																																																			
G	-	2%																																																			
J	-	5%																																																			
K	-	10%																																																			
L	-	20%																																																			
X	-	Special																																																			

Barry Industries reserves the right to change part number and or process without notification

Barry Industries, Inc., 60 Walton St., Attleboro, MA 02703 T: 508-226-3350 F: 508-226-3317 E-mail: sales@barryind.com

Barry Industries maintains an ISO 9001 Certified Quality Management System

Origination Date	Revision Date	Rev.
11/27/07	11/27/07	-