



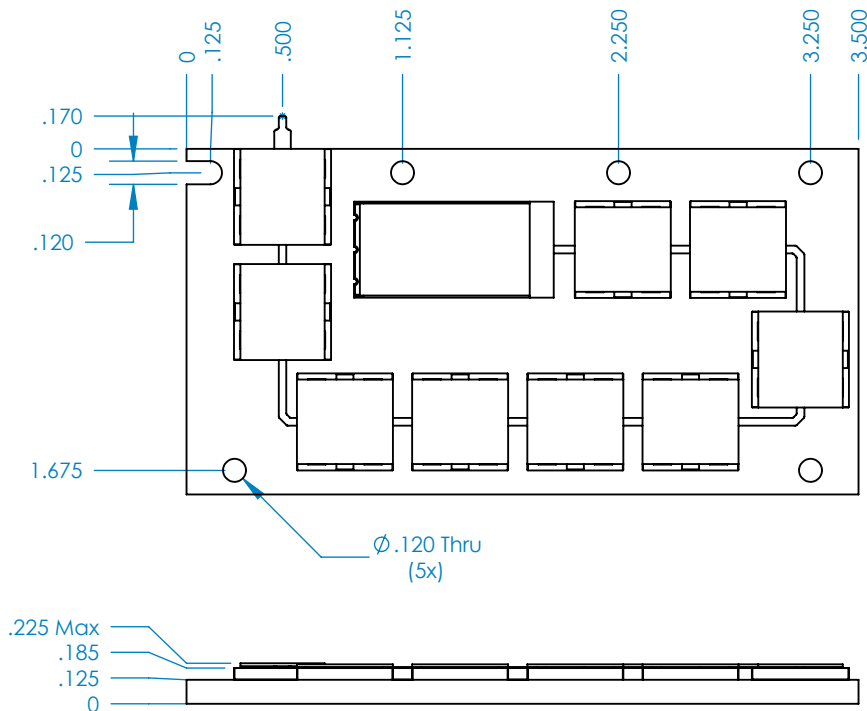
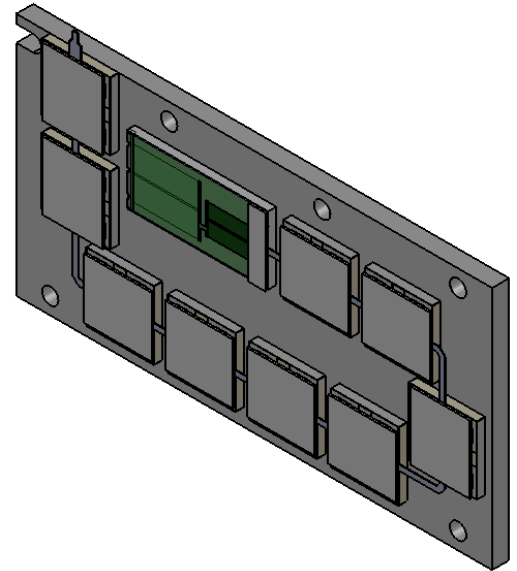
WWW.BARRYIND.COM

T50R0-5000-1X

BeO FLANGED TERMINATION

Features:

- BeO Material
- 5000 Watts Pulsed or CW
- Tabbed Connection
- Even Heat Distribution



Parameter	Min.	Typ.	Max.	Units
Input Power			5000	Watts
Frequency Range	DC		1 GHZ	
Heat Sink Temperature			100	°C
Return Loss	20			dB

Barry Industries reserves the right to change part number and process without notification

Barry Industries, Inc., 60 Walton St., Attleboro, MA 02703 T: 508-226-3350 F: 508-226-3317 E-mail: sales@barryind.com

Barry Industries maintains an ISO 9001 Certified Quality Management System

Origination Date	Revision Date	Rev.
28 Aug 2013		-
Page 1 of 1		