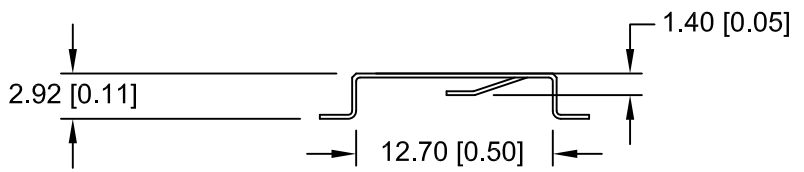
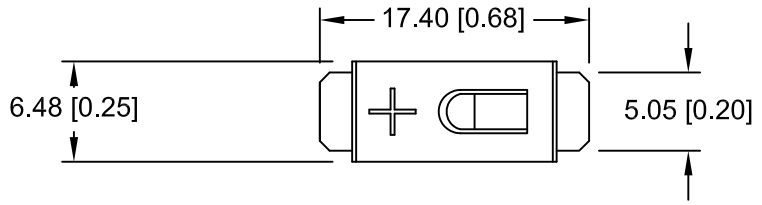
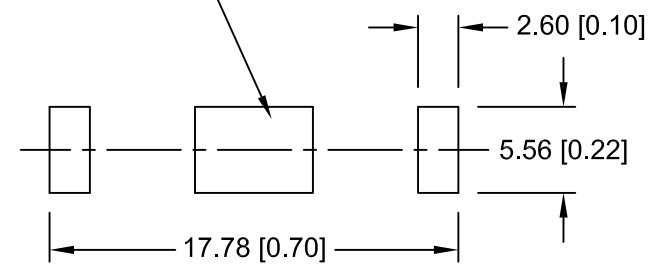


Date	SYM	REVISION RECORD	AUTH	DR.	CK.




NEGATIVE CONTACT PAD



PCB LAYOUT

NOTES:

1. MATERIAL:
0.25mm PHOSPHOR BRONZE, NICKLE PLTD.
2. ROHS COMPLIANT

Tolerance (Except as noted)	 Memory Protection Devices, Inc 200 Broad Hollow Road, Farmingdale, New York 11735		
		decimal ±.5 (.020)	Scale
Fractional ± .8 (.030)	Title CR1225 BATTERY STRAP, SMT		
Angular ± 3°	Date 07/26/13	Drawing Number BC-2009	