



**Baumer**

Passion for Sensors

# Process connections & accessories

## Product Overview



# Ready to fit your process: Baumer sensors support off-the-shelf standard and brand compatible process connections.

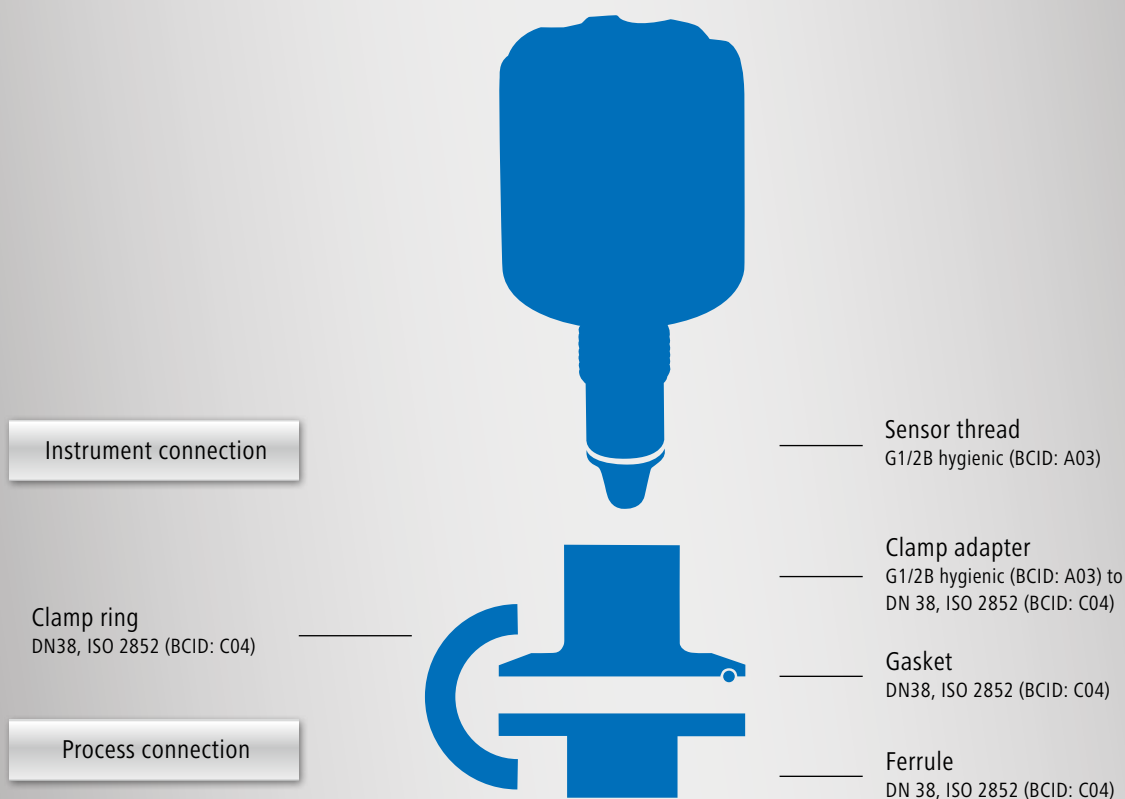
Baumer instruments fit almost every process connection you have in place. With more than 40 connection types readily available, you needn't modify your system design in any way. The Baumer Connection Identifier (BCID) provides you a convenient and safe system to identify the right process adapter to get your Baumer sensor mounted to your application.

provides you with the BCID code for the selected connection type. Each adaptor or sleeve comes also with a BCID code. Same BCID codes always mean matching accessories – whether adaptors, ferrules, clamp rings or gaskets.

## How to select the fitting adaptor to your instrument

In the first place, you should decide which process connection – threaded, clamped or welded. Please refer to the table on next page for more information. Afterwards, the sensor data sheet

## Example for the Baumer Connection Identifier (BCID) System



Threaded connections		Hygienic	BCID
ISO 228-1	G1/2B G1 1/4B G1 1/2B G2B G1/2A cone G1/2A O-ring at the front G1A O-ring at the front		G07 G13 G14 G16 G08 G09 G12
EH FTL EE2	Rd52	■	T02
EH FTL GW2 (ø 29.0)	G1B	■	T03
EH FTL GQ2 (ø 23.7)	G3/4B	■	T04
VS (ø 21.3)	G3/4	■	T06
VS (ø 21.3)	G1	■	T07
Hygienic (cone)	G1/8 M12 × 1,5 G1/2B G1B	■ ■ ■ ■	A01 A02 A03 A04

Clamp and nut connections		Hygienic	BCID
Baumer Hygienic Connection	BHC 3A DN 38 BHC 3A DN 76	■ ■	B01 B02
ISO 2852	1" 1 1/2" 2"	■ ■ ■	C03 C04 C05
DIN 11851	DN 25 DN 32 DN 40 DN 50 DN 65		D01 D02 D03 D04 D05
SMS 1145	DN 38 DN 51	■ ■	S01 S02
VARIVENT®	Type N	■	V02

Welded connections			BCID
Thin wall tank (collar)	Ø16 × 12,2 Ø25 × 17 Ø45 × 34		W01 W05 W20
Thick wall tank (cylinder)	Ø30 × 26 Ø30 × 34 with inspection hole Ø35 × 20,0 Ø50 × 23 Ø55 × 32 Ø60 × 20,5 Ø120 × 32		W10 W21 W35 W45 W65 W50 W70
Angular mounting (ball)	Ø35		W30
Pipe without extrusion	Ø16, DN 25		W02
Pipe extrusion	Ø29, DN 25 ... DN 50 Ø30, DN 65 ... DN 150 Ø40, DN 40 ... DN 50 Ø41, DN 65 ... DN 150 Ø38, DN 38		W25 W26 W40 W41 W60

# Process connections & accessories

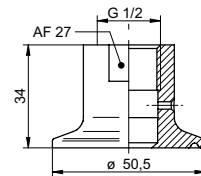
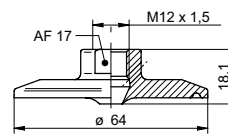
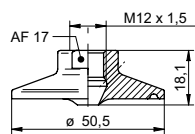


Hygienic clamp adapters acc. ISO 2852, DIN 32676



	ZPH1-2213	ZPH1-2216	ZPH1-3213
Process connection	DN 38 (BCID: C04)	DN 51 (BCID: C05)	DN 38 (BCID: C04)
Instrument connection	M12 hygienic (BCID: A02)	M12 hygienic (BCID: A02)	G1/2B hygienic (BCID: A03)
Instrument series	TE2	TE2	LBFS, LFFS LSKx2 TFRH, TE2 PBMN-flush PFMN
Material	AISI 316L (1.4404)	AISI 316L (1.4404)	AISI 316L (1.4404)
Surface roughness (µm)	Ra ≤ 0.8	Ra ≤ 0.8	Ra ≤ 0.8
Max. pressure	PN 40	PN 40 (PN 64 w. ZPX4-610)	PN 40 (Safe at PN 64)
Approvals			3-A, EHEDG for LBFS / LFFS
Union nut			
Ferrule	ZPX4-320		ZPX4-320
Clamp-ring	ZPX4-310	ZPX4-610	ZPX4-310
O-ring			
Gasket EPDM (3-A, FDA) EPDM (EHEDG)	ZPX3-7233 ZPX3-7234	ZPX3-7263 ZPX3-7264	ZPX3-7233 ZPX3-7234

## Drawing



# Hygienic clamp adapters acc. ISO 2852, DIN 32676



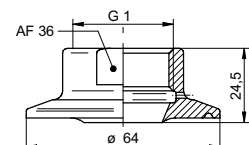
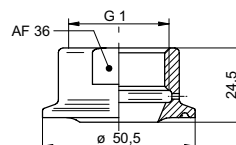
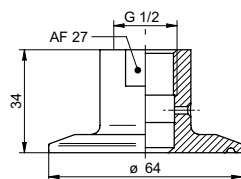
ZPH1-3216

ZPH1-5213

ZPH1-5216

Process connection	DN 51 (BCID: C05)	DN 38 (BCID: C04)	DN 51 (BCID: C05)
Instrument connection	G1/2B hygienic (BCID: A03)	G1B hygienic / G1B cone (BCID: A04)	G1B hygienic / G1B cone (BCID: A04)
Instrument series	LBFS, LFFS LSKx2 TFRH, TE2 PBMN-flush PFMN	PBMN flush PFMN LSP, LSKx5 AFix	PBMN flush PFMN LSP, LSKx5 AFix
Material	AISI 316L (1.4404)	AISI 316L (1.4404)	AISI 316L (1.4404)
Surface roughness (µm)	Ra ≤ 0.8	Ra ≤ 0.8	Ra ≤ 0.8
Max. pressure	PN 40 (Safe at PN 64)	PN 40 (Safe at PN 64)	PN 40 (Safe at PN 64)
Approvals	3-A, EHEDG for LBFS / LFFS	3-A, EHEDG for AFI4 / AFI5	3-A, EHEDG for AFI4 / AFI5
Union nut			
Ferrule		ZPX4-320	
Clamp-ring DN 38, DN 51	ZPX4-610	ZPX4-310	ZPX4-610
O-ring			
Gasket EPDM (3-A, FDA) EPDM (EHEDG)	ZPX3-7263 ZPX3-7264	ZPX3-7233 ZPX3-7234	ZPX3-7263 ZPX3-7264

## Drawing



# Hygienic VARIVENT® adapters



**ZPH1-324E**

**ZPH1-524E**

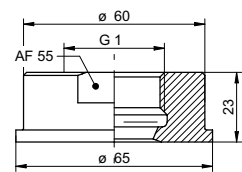
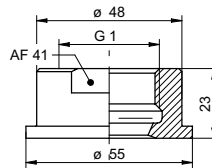
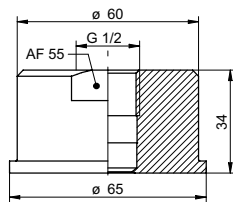
Process connection	VARIVENT® type N (BCID: V02)	VARIVENT® type N (BCID: V02)
Instrument connection	G1/2B hygienic (BCID: A03)	G1B hygienic / G1B cone (BCID: A04)
Instrument series	LBFS, LFFS LSKx2 TFRH, TE2 PBMN-flush PFMN	PBMN flush PFMN LSP, LSKx5 AFix
Material	AISI 316L (1.4404)	AISI 316L (1.4404)
Surface roughness (µm)	Ra ≤ 0.8	Ra ≤ 0.8
Max. pressure	10 bar	10 bar
Approvals	3-A, EHEDG for LBFS / LFFS	3-A, EHEDG for AFi4 / AFi5
Union nut		
Ferrule		
Clamp-ring		
O-ring	ZPX2-323	ZPX2-323
Gasket		
Drawing		

# Hygienic adapters acc. SMS 1145



	ZPH1-3236	ZPH1-5233	ZPH1-5236
Process connection	DN 51 (BCID: S02)	DN 38 (BCID: S01)	DN 51 (BCID: S02)
Instrument connection	G1/2B hygienic (BCID: A03)	G1B hygienic / G1B cone (BCID: A04)	G1B hygienic / G1B cone (BCID: A04)
Instrument series	LBFS, LFFS LSKx2 TFRH, TE2	PBMN flush PFMN LSP, LSKx5 AFix	PBMN flush PFMN LSP, LSKx5 AFix
Material	AISI 316L (1.4404)	AISI 316L (1.4404)	AISI 316L (1.4404)
Surface roughness (µm)	Ra ≤ 0.8	Ra ≤ 0.8	Ra ≤ 0.8
Max. pressure	25 bar	40 bar	25 bar
<b>Approvals</b>			
Union nut SMS 1145	ZPX4-630	ZPX4-330	ZPX4-630
Ferrule			
Clamp-ring			
O-ring			
Gasket NBR	ZPX3-8160	ZPX3-8130	ZPX3-8160

## Drawing





# Hygienic adapters acc. DIN 11851



ZPH1-3221



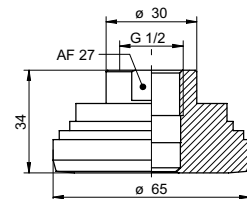
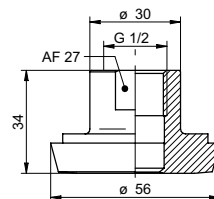
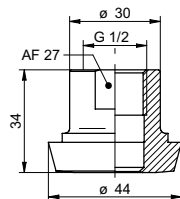
ZPH1-3224



ZPH1-3225

Process connection	DN 25 (BCID: D01)	DN 40 (BCID: D03)	DN 50 (BCID: D04)
Instrument connection	G1/2B hygienic (BCID: A03)	G1/2B hygienic (BCID: A03)	G1/2B hygienic (BCID: A03)
Instrument series	PBMN flush PFMN LBFS, LFFS LSKx2 TFRH, TE2	PBMN flush PFMN LBFS, LFFS LSKx2 TFRH, TE2	PBMN flush PFMN LBFS, LFFS LSKx2 TFRH, TE2
Material	AISI 316L (1.4404)	AISI 316L (1.4404)	AISI 316L (1.4404)
Surface roughness (µm)	Ra ≤ 0.8	Ra ≤ 0.8	Ra ≤ 0.8
Max. pressure	40 bar	40 bar	10 bar
Approvals			
Union nut	ZPX4-140	ZPX4-440	ZPX4-540
Ferrule			
Clamp-ring			
O-ring			
Gasket	ZPX3-9110	ZPX3-9140	ZPX3-9150

## Drawing





# Hygienic adapters acc. DIN 11851



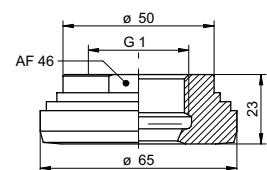
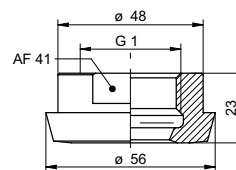
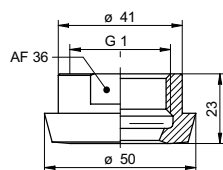
ZPH1-5222

ZPH1-5224

ZPH1-5225

Process connection	DN 32 (BCID: D02)	DN 40 (BCID: D03)	DN 50 (BCID: D04)
Instrument connection	G1B hygienic / G1B cone (BCID: A04)	G1B hygienic / G1B cone (BCID: A04)	G1B hygienic / G1B cone (BCID: A04)
Instrument series	PBMN flush PFMN LBFS, LFFS LSKx5 TFRH, TE2	PBMN flush PFMN LBFS, LFFS LSKx5 TFRH, TE2	PBMN flush PFMN LBFS, LFFS LSKx5 TFRH, TE2
Material	AISI 316L (1.4404)	AISI 316L (1.4404)	AISI 316L (1.4404)
Surface roughness (µm)	Ra ≤ 0.8	Ra ≤ 0.8	Ra ≤ 0.8
Max. pressure	40 bar	40 bar	25 bar
Approvals			
Union nut		ZPX4-440	ZPX4-540
Ferrule			
Clamp-ring			
O-ring			
Gasket NBR		ZPX3-9140	ZPX3-9150

## Drawing



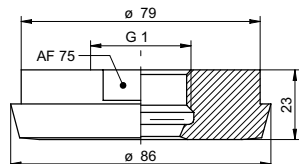
Hygienic adapters  
acc. DIN 11851



ZPH1-5227

Process connection	DN 65 (BCID: D05)
Instrument connection	G1B hygienic / G1B cone (BCID: A04)
Instrument series	PBMN flush PFMN LSP, LSKx5 AFix
Material	AISI 316L (1.4404)
Surface roughness (µm)	Ra ≤ 0.8
Max. pressure	25 bar
Approvals	
Union nut	ZPX4-740
Ferrule	
Clamp-ring	
O-ring	
Gasket	

Drawing



# Hygienic weld-in sleeves



**ZPW2-122**

**ZPW2-125**

**ZPW2-222**

Process connection	Thin-walled tanks (BCID: W01)	Pipe DN 25 (BCID: W02)	Thin-walled tanks (BCID: W05)
Instrument connection	G1/8 conical (BCID: A01)	G1/8 conical (BCID: A01)	M12 hygienic (BCID: A02)
Instrument series	TE2 Conical cable sensor	TE2 Conical cable sensor	TE2
Material	AISI 316L (1.4404)	AISI 316L (1.4404)	AISI 316L (1.4404)
Surface roughness (µm)	Ra ≤ 0.8	Ra ≤ 0.8	Ra ≤ 0.8
Max. pressure	PN 40	PN 40	PN 40

Approvals

Union nut

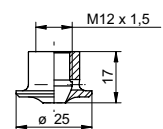
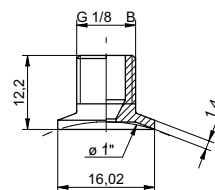
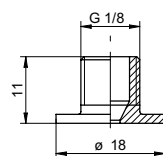
Ferrule

Clamp-ring

O-ring

Gasket

Drawing



# Industrial weld-in sleeves



ZPW1-711



ZPW1-721



ZPW1-121

Process connection	Tank Pipes (BCID: W10)	Tank Pipes (BCID: W10)	Tank Pipes (BCID: W35)
Instrument connection	LBFS G1/2B (BCID: G07)	LBFS G1/2B (BCID: G07)	G1/2A cone (BCID: G08)
Instrument series	LBFS	LBFS	PBMN flush
Material	AISI 304 (1.4301)	AISI 316L (1.4404)	AISI 316L (1.4404)
Surface roughness (µm)	Ra ≤ 0.8	Ra ≤ 0.8	Ra ≤ 0.8
Max. pressure	PN 100	PN 100	PN 100

Approvals

Union nut

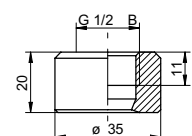
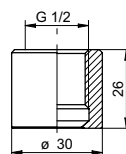
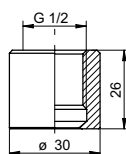
Ferrule

Clamp-ring

O-ring

Gasket

Drawing



# Hygienic weld-in sleeves



	ZPW2-321	ZPW2-327	ZPW2-326
Process connection	Tank with inspection hole (BCID: W21)	Pipe extrusion DN 65 ... DN 150 (BCID: W26)	Pipe extrusion DN 25 ... DN 50 (BCID: W25)
Instrument connection	G1/2B hygienic (BCID: A03)	G1/2B hygienic (BCID: A03)	G1/2B hygienic (BCID: A03)
Instrument series	LBFS, LFFS LSKx2 TFRH, TE2 PBMN-flush PFMN	LBFS, LFFS LSKx2 TFRH, TE2 PBMN-flush PFMN	LBFS, LFFS LSKx2 TFRH, TE2 PBMN-flush PFMN
Material	AISI 316L (1.4404)	AISI 316L (1.4404)	AISI 316L (1.4404)
Surface roughness (µm)	Ra ≤ 0.8	Ra ≤ 0.8	Ra ≤ 0.8
Max. pressure	PN 100	PN 40	PN 40
Approvals	3-A, EHEDG		
Union nut			
Ferrule			
Clamp ring			
O-ring			
Gasket			
Drawing			

## Industrial flush weld-in sleeves

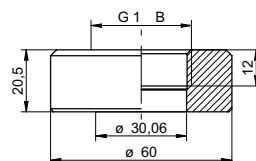
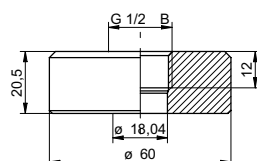


ZPW1-221



ZPW1-621

Process connection	Tank Pipes (BCID: W50)	Tank Pipes (BCID: W50)
Instrument connection	G1/2A o-ring at the front (BCID: G09)	G1A, o-ring at the front (BCID: G12)
Instrument series	PBMN flush	PBMN flush PFMN
Material	AISI 316L (1.4404)	AISI 316L (1.4404)
Surface roughness (µm)		Ra ≤ 0.8
Max. pressure		
Approvals		
Union nut		
Ferrule		
Clamp-ring		
O-ring NBR	ZPX2-610	ZPX2-710
EPDM	ZPX2-620	ZPX2-720
FKM	ZPX2-630	ZPX2-730
Gasket NBR	ZPX3-410	ZPX3-510
EPDM	ZPX3-420	ZPX3-520
FKM	ZPX3-430	ZPX3-530
Drawing		





# Hygienic weld-in sleeves

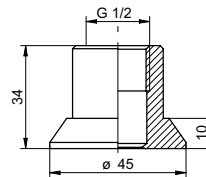
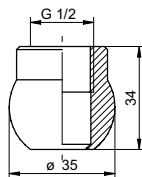


ZPW2-324



ZPW2-322

Process connection	Tanks Pipes (BCID: W30)	Thin walled tanks Pipes (BCID: W20)
Instrument connection	G1/2B hygienic (BCID: A03)	G1/2B hygienic (BCID: A03)
Instrument series	LBFS, LFFS LSKx2 TFRH, TE2 PBMN-flush PFMN	LBFS, LFFS LSKx2 TFRH, TE2 PBMN-flush PFMN
Material	AISI 316L (1.4404)	AISI 316L (1.4404)
Surface roughness (µm)		Ra ≤ 0.8
Max. pressure		PN 40
Approvals		
Union nut		
Ferrule		
Clamp-ring		
O-ring		
Gasket		
Drawing		





# Hygienic weld-in sleeves



ZPW2-526

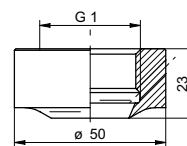
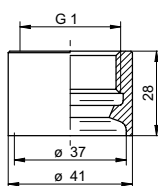
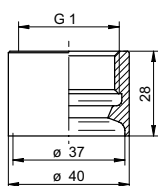


ZPW2-527



ZPW2-521

Process connection	Pipe extrusion DN 40...DN 50 (BCID: W40)	Pipe extrusion DN 65...DN 150 (BCID: W041)	Tanks (BCID: W45)
Instrument connection	G1B hygienic (BCID: A04)	G1B hygienic (BCID: A04)	G1B hygienic (BCID: A04)
Instrument series	PBMN flush PFMN LSP, LSKx5 AFIx	PBMN flush PFMN LSP, LSKx5 AFIx	PBMN flush PFMN LSP, LSKx5 AFIx
Material	AISI 316L (1.4404)	AISI 316L (1.4404)	AISI 316L (1.4404)
Surface roughness (µm)	Ra ≤ 0.8	Ra ≤ 0.8	Ra ≤ 0.8
Max. pressure	PN 40	PN 40	PN 100
Approvals			3-A, EHEDG
Union nut			
Ferrule			
Clamp-ring			
O-ring			
Gasket			
Drawing			

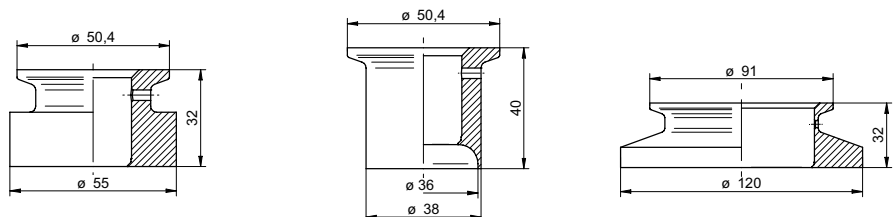


# Hygienic weld-in sleeves acc. Baumer Hygienic Connection (BHC 3A)



	ZPW2-621	ZPW2-626	ZPW2-721
Process connection	DN 38 Tanks (BCID: W65)	DN 38 Pipe extrusion DN 38 (BCID: W60)	DN 76 Tanks level measurement (BCID: W70)
Instrument connection	BHC 3A DN 38 (BCID: B01)	BHC 3A DN 38 (BCID: B01)	BHC 3A DN 76 (BCID: B02)
Instrument series	PBMH PFMH, TE2 TFRH LFFS	PBMH PFMH, TE2 TFRH LFFS	PBMH PFMH
Material	AISI 316L (1.4404)	AISI 316L (1.4404)	AISI 316L (1.4404)
Surface roughness (µm)	Ra ≤ 0.8	Ra ≤ 0.8	Ra ≤ 0.8
Max. pressure	PN 40	PN 40	PN 10
Approvals	3-A, EHEDG	3-A, EHEDG	3-A, EHEDG
Union nut			
Ferrule			
Clamp-ring	ZPX4-310	ZPX4-310	ZPX4-810
O-ring NBR	ZPX2-112	ZPX2-112	ZPX2-212
EPDM	ZPX2-123	ZPX2-123	ZPX2-222
FKM	ZPX2-132	ZPX2-132	ZPX2-232
Gasket			

## Drawing



# Vibronic level switch replacement



ZPH1-32BA



ZPH1-32CB



ZPH1-32A1

Process connection	EH FTL G3/4B Ø23.7 G3/4" Hygienic adapter (BCID: T04)	EH FTL G1B Ø29 G1" Hygienic adapter (BCID: T03)	EH Rd52 (BCID: T01)
Instrument connection	G1/2B hygienic (BCID: A03)	G1/2B hygienic (BCID: A03)	G1/2B hygienic (BCID: A03)
Instrument series	LBFS, LFFS LSKx2 TFRH, TE2 PBMN-flush PFMN	LBFS, LFFS LSKx2 TFRH, TE2 PBMN-flush PFMN	LBFS, LFFS LSKx2 TFRH, TE2 PBMN-flush PFMN
Material	AISI 316L (1.4404)	AISI 316L (1.4404)	AISI 316L (1.4404)
Surface roughness (µm)	Ra ≤ 0.8	Ra ≤ 0.8	Ra ≤ 0.8
Max. pressure	PN 40	PN 40	40 bar

Approvals

Union nut

ZPX4-140

Ferrule

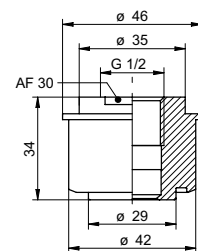
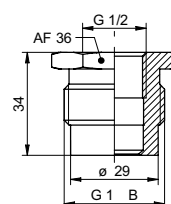
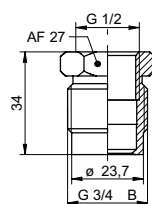
Clamp-ring

O-ring

Gasket

ZPX3-9110

Drawing



# Vibronic level switch replacement



ZPH1-32BC

ZPH1-32CD

ZPH1-32C0

Process connection	VS G3/4B, Ø21.3 G3/4" Hygienic adapter (BCID: T06)	VS G1B, Ø21.3 G1" Hygienic adapter (BCID: T07)	G1B (For mounting G1/2B hygienic in G1 conical adapter) (BCID: A04)
Instrument connection	G1/2" B hygienic (BCID: A03)	G1/2" B hygienic (BCID: A03)	G1/2" B hygienic (BCID: A03)
Instrument series	LBFS, LFFS LSKx2 TFRH, TE2 PBMN-flush PFMN	LBFS, LFFS LSKx2 TFRH, TE2 PBMN-flush PFMN	LBFS, LFFS LSKx2 TFRH, TE2 PBMN-flush PFMN
Material	AISI 316L (1.4404)	AISI 316L (1.4404)	AISI 316L (1.4404)
Surface roughness (µm)	Ra ≤ 0.8	Ra ≤ 0.8	Ra ≤ 0.8
Max. pressure	PN 40	PN 40	PN 40

Approvals

Union nut

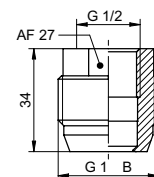
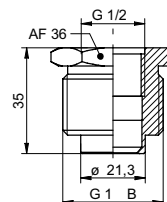
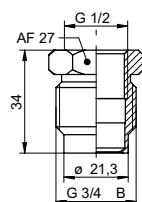
Ferrule

Clamp-ring

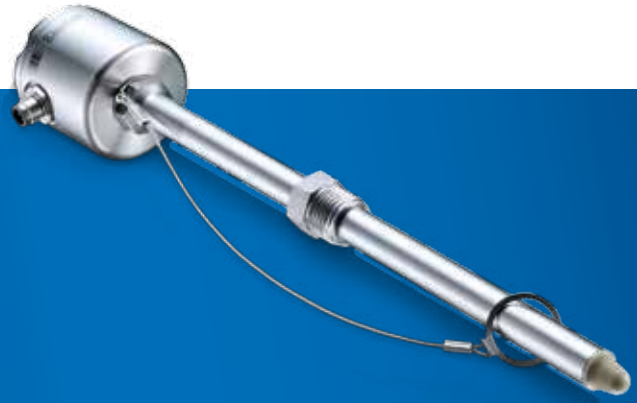
O-ring

Gasket

Drawing



# Standard threaded adapters



ZPI1-32B



ZPI1-32D



ZPI1-32E

Process connection	Industrial thread G1B (BCID: G11)	Industrial thread G11/2B (BCID: G14)	Industrial thread G2B (G16)
Instrument connection	G1/2B hygienic (BCID: A03)	G1/2B hygienic (BCID: A03)	G1/2B hygienic (BCID: A03)
Instrument series	LBFS, LFFS LSKx2 TFRH, TE2 PBMN-flush PFMN	LBFS, LFFS LSKx2 TFRH, TE2 PBMN-flush PFMN	LBFS, LFFS LSKx2 TFRH, TE2 PBMN-flush PFMN
Material	AISI 316L (1.4404)	AISI 316L (1.4404)	AISI 316L (1.4404)
Surface roughness (µm)	Ra ≤ 0.8	Ra ≤ 0.8	Ra ≤ 0.8
Max. pressure	PN 40	PN 40	PN 40

Approvals

Union nut

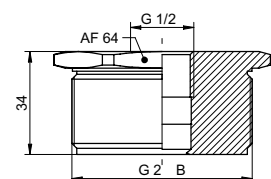
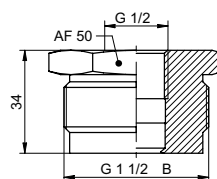
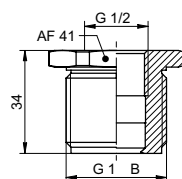
Ferrule

Clamp-ring

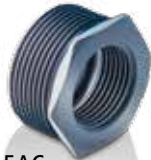
O-ring

Gasket

Drawing



# Standard threaded adapters Threaded cable hanger



ZPI1-5AC



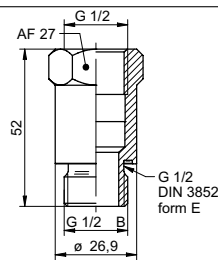
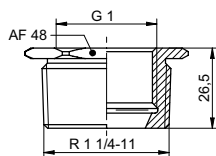
ZPI1-32A



ZPI1-A2D

Process connection	G11/4B industrial (BCID: G13)	G1/2 industrial DIN 3852 form E Tanks and pipes (BCID: G51)	G11/2B industrial (BCID: G14)
Instrument connection	G1B hygienic / G1B cone (BCID: A04)	G1/2B hygienic (BCID: A03)	Cable holder
Instrument series	PBMN flush PFMN LSP, LSKx5 AFix	LFFS sliding connection	LBFS-Hanging
Material	PVC	AISI 316L (1.4404)	
Surface roughness (µm)		Ra ≤ 0.8	
Max. pressure	PN 10, 20°C	PN 16	PN 10
Approvals			
Union nut			
Ferrule			
Clamp-ring			
O-ring			
Gasket NBR EPDM FKM		ZPX2-410 ZPX2-420 ZPX2-430	

## Drawing



# Blind plugs G1/8, M12, G1/2



ZPX5-12



ZPX5-22



ZPX5-32

Process connection

Instrument connection	G1/8 (BCID: A01)	M12 hygienic (BCID: A02)	G1/2B hygienic (BCID: A03)
Instrument series	TE2 Conical cable sensor	TE2	LBFS, LFFS LSKx2 TFRH, TE2 PBMN-flush PFMN
Material	AISI 316L (1.4404)	AISI 316L (1.4404)	AISI 316L (1.4404)
Surface roughness (µm)	Ra ≤ 0.8	Ra ≤ 0.8	Ra ≤ 0.8
Max. pressure	PN 40	PN 40	PN 100

Approvals

Union nut

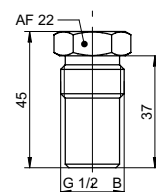
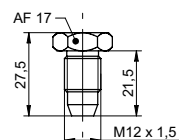
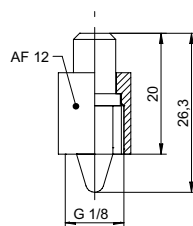
Ferrule

Clamp-ring

O-ring

Gasket

Drawing





Blind plugs  
G1, BHC 3A DN 38,  
BHC 3A DN 76



ZPX5-62



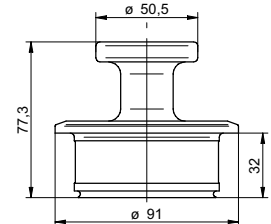
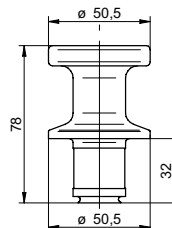
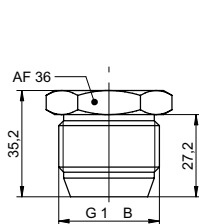
ZPX5-82



ZPX5-92

Process connection		BHC 3A DN 38	BHC 3A DN 76
Instrument connection	G1B hygienic / G1B cone (BCID: A04)	BHC 3A DN 38 (BCID: B01)	BHC 3A DN 76 (BCID: B02)
Instrument series	PBMN flush PFMN LSP, LSKx5 AFix	PBMH PFMH, TE2 TFRH LFFS	PBMH PFMH
Material	AISI 316L (1.4404)	AISI 316L (1.4404)	AISI 316L (1.4404)
Surface roughness (µm)	Ra ≤ 0.8	Ra ≤ 0.8	Ra ≤ 0.8
Max. pressure	PN 70	PN 40	PN 10
Approvals		3-A	3-A
Union nut			
Ferrule			
Clamp-ring			
O-ring NBR		ZPX2-112	ZPX2-212
EPDM		ZPX2-123	ZPX2-222
FKM		ZPX2-132	ZPX2-232
Gasket			

Drawing



# Welding mandrels for threaded hygienic welded connections



ZPX6-26



ZPX6-36



ZPX6-66

Process connection

Instrument connection	M12 hygienic (BCID: A02)	G1/2B hygienic (BCID: A03)	G1B hygienic / G1B cone (BCID: A04)
-----------------------	--------------------------	----------------------------	-------------------------------------

Instrument series	TE2	LBFS, LFFS LSKx2 TFRH, TE2 PBMN-flush PFMN	PBMN flush PFMN LSP, LSKx5 AFix
-------------------	-----	--	--

Material	Brass	Brass	Brass
----------	-------	-------	-------

Surface roughness (µm)

Max. pressure

Approvals

Union nut

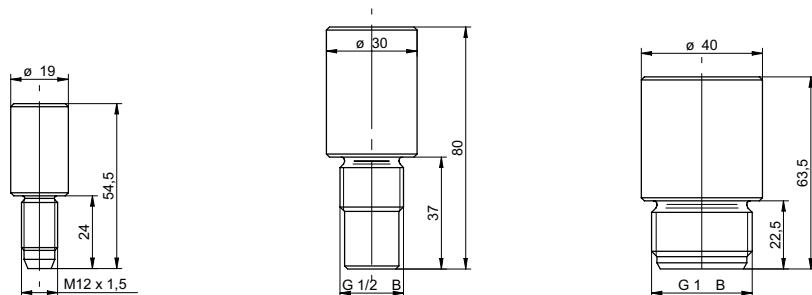
Ferrule

Clamp-ring

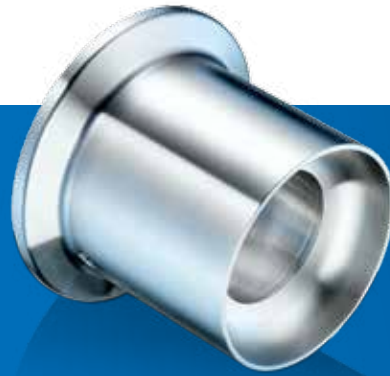
O-ring

Gasket

Drawing



# Welding mandrels for BHC hygienic welded connections

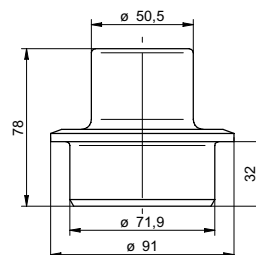
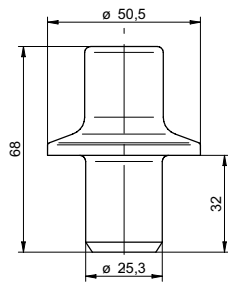


ZPX6-86



ZPX6-96

Process connection		
Instrument connection	BHC 3A DN 38 (BCID: B01)	BHC 3A DN 76 (BCID: B02)
Instrument series	PBMH PFMH, TE2 TFRH	PBMH PFMH
Material	Brass	Brass
Surface roughness (µm)		
Max. pressure		
Approvals		
Union nut		
Ferrule		
Clamp-ring		
O-ring		
Gasket		
Drawing		



Additional parts for hygienic clamp connections  
acc. ISO 2852, DIN 32676



ZPX4-320



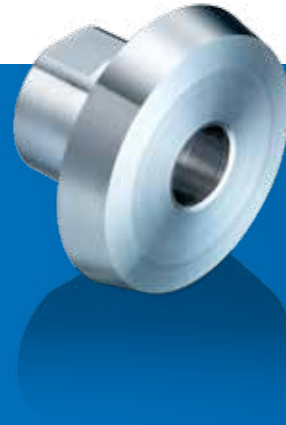
ZPX4-x10



ZPX3-7xxx

Process connection	Ferrule ISO 2852 (BCID: C04)	Closure clamp ISO 2852 (BCID: B0x, C0x)	Gasket ISO 2852 (BCID: C04, C05)
Instrument connection			
Instrument series			
Material	AISI 304 (1.4301)	Stainless steel AISI 304 (1.4301)	EPDM
Surface roughness (µm)	Ra ≤ 0.8		
Max. pressure	DN 38 - 16 bar	DN 38 - 100 bar DN 51 - 100 bar DN 76 - 90 bar	
Approvals	3-A		3-A, FDA EHEDG
Dimension / material / type code:	DN 38 / ZPX4-320	DN 38 / ZPX4-310 (BCID: B01, C04) DN 51 / ZPX4-610 (BCID: C05) DN 76 / ZPX4-810 (BCID: B02)	3-A, FDA DN 38 / EPDM / ZPX3-7233 (BCID: C04) DN 51 / EPDM / ZPX3-7263 (BCID: C05)  EHEDG DN 38 / EPDM / ZPX3-7234 (BCID: C04)

Additional parts for hygienic threaded connections  
acc. SMS 1145, DIN 11851



ZPX4-xx0

ZPX3-x1x0

Process connection	Ring nut SMS 1145 DIN 11851 (BCID: D0x / S0x)	Union gasket SMS 1145 DIN 11851 (BCID: D0x / S0x)
Instrument connection		
Instrument series		
Material	Stainless steel AISI 304 (1.4301)	NBR
Surface roughness (µm)		
Max. pressure		
Approvals		
Dimension / material / type code:	SMS, DN 38 / ZPX4-330 (BCID: S01) SMS, DN 51 / ZPX4-630 (BCID: S02) DIN, DN 25 / ZPX4-140 (BCID: D01) DIN, DN 40 / ZPX4-440 (BCID: D03) DIN, DN 50 / ZPX4-540 (BCID: D04) DIN, DN 65 / ZPX4-740 (BCID: D05)	SMS, DN 38 / NBR / ZPX3-8130 (BCID: S01) SMS, DN 51 / NBR / ZPX3-8160 (BCID: S02) DIN, DN 25 / NBR / ZPX3-9110 (BCID: D01) DIN, DN 40 / NBR / ZPX3-9140 (BCID: D03) DIN, DN 50 / NBR / ZPX3-9150 (BCID: D04) DIN, DN 65 / NBR / ZPX3-9170 (BCID: D05)

O-ring acc.  
3A DN 38 and DN 76  
Varivent type N



ZPX2-1xx



ZPX2-2x2



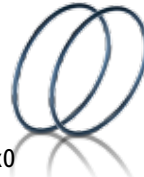
ZPX2-323

	ZPX2-1xx	ZPX2-2x2	ZPX2-323
Process connection	O-ring BHC 3A DN 38 (BCID: B01)	O-ring BHC 3A DN 76 (BCID: B02)	O-ring Varivent type N (BCID: V02)
Instrument connection			
Instrument series			
Material	NBR, EPDM, FKM	NBR, EPDM, FKM	EPDM
Surface roughness (µm)			
Max. pressure	DN 38 - 16 bar	DN 38 - 100 bar DN 51 - 100 bar DN 76 - 90 bar	
Approvals	3-A, FDA	FDA	3-A, FDA
Dimension / material / type code:	Ø66×3.1 / NBR (FDA) / ZPX2-112 Ø19×3 / EPDM (3-A, FDA) / ZPX2-123 Ø19×3 / FKM (FDA) / ZPX2-132	Ø66×3.1 / NBR (FDA) / ZPX2-212 Ø66×3.1 / EPDM (FDA) / ZPX2-222 Ø66×3.1 / FKM (FDA) / ZPX2-232	Ø62×3 / EPDM / ZPX2-323

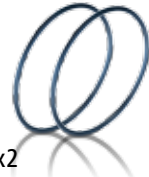
Gasket acc.  
DIN 3852 form E,  
O-ring at the front  
for G1/2 and G1



ZPX2-4x0



ZPX2-6x0



ZPX2-7x2

Process connection	Sealing ring (DIN 3869) G1/2, DIN 3852 Form E (BCID: G51)	O-rings G1/2A, O-ring at the front (BCID: G09)	O-rings G1A, O-ring at the front (BCID: G12)
Instrument connection			
Instrument series			
Material	NBR, EPDM, FKM	NBR, EPDM, FKM	NBR, EPDM, FKM
Surface roughness (µm)			
Max. pressure			
Approvals			
Dimension / material / type code:	G1/2 / NBR / ZPX2-410 G1/2 / EPDM / ZPX2-420 G1/2 / FKMM / ZPX2-430	Ø15×2 / NBR / ZPX2-610 Ø15×2 / EPDM / ZPX2-620 Ø15×2 / FKMM / ZPX2-630	Ø26×2 / NBR / ZPX2-712 Ø26×2 / EPDM / ZPX2-722 Ø26×2 / FKMM / ZPX2-732



# Worldwide presence.



## Africa

Algeria  
Cameroon  
Côte d'Ivoire  
Egypt  
Morocco  
Reunion  
South Africa

## America

Brazil  
Canada  
Colombia  
Mexico  
United States  
Venezuela

## Asia

Bahrain  
China  
India  
Indonesia  
Israel  
Japan  
Kuwait  
Malaysia  
Oman  
Philippines  
Qatar  
Saudi Arabia  
Singapore  
South Korea  
Taiwan  
Thailand  
UAE

## Europe

Austria  
Belgium  
Bulgaria  
Croatia  
Czech Republic  
Denmark  
Finland  
France  
Germany  
Greece  
Hungary  
Italy  
Malta  
Martinique  
Netherlands  
Norway  
Poland  
Portugal  
Romania  
Russia  
Serbia  
Slovakia  
Slovenia  
Spain  
Sweden  
Switzerland  
Turkey  
United Kingdom

## Oceania

Australia  
New Zealand



For more information  
about our worldwide  
locations go to:  
[www.baumer.com/worldwide](http://www.baumer.com/worldwide)

 **Baumer**  
Passion for Sensors

**Baumer Group**  
International Sales  
P.O. Box · Hummelstrasse 17 · CH-8501 Frauenfeld  
Phone +41 (0)52 728 1122 · Fax +41 (0)52 728 1144  
[sales@baumer.com](mailto:sales@baumer.com) · [www.baumer.com](http://www.baumer.com)

Represented by: