



**Baumer**

Passion for Sensors

# Digital industrial cameras

Capture the essential.



# Inspired by nature – our technology as evolution.



The human eye can discern about 100 shades of gray. Our cameras can distinguish more than 4,000.

We can see no more than 16 individual images per second, but our cameras can capture more than 1,000.

Our cameras never get tired.

# Machine vision with expertise and passion.

Baumer is a global leader in sensor solutions for factory and process automation. More than 2,300 employees in 38 subsidiaries in 19 countries are at your service across the globe.

Industrial image processing is an important business for us. Leading in innovation, we have been providing high-performance digital cameras for PC-based image processing systems and intuitive vision sensors for over 15 years.

Merging cutting-edge technologies with customer-focused consultancy has made us a premier global provider of high-quality industrial cameras. Our customers benefit from a diverse portfolio of sophisticated products for many different applications across varied industries. We are committed to long-term availability of our cameras to make sure our customers will obtain a high return on their investments in vision systems.

We develop customer-focused products, anticipate trends and shape the market by pointing the way with technology innovations. We put a particular emphasis on high performance, outstanding quality and durability as well as easy system integration.

Where standard products come to their limits, we develop market-oriented, customised components in close cooperation with our customers. The result: Your decisive competitive edge.

# High-performance industrial cameras.

High frame rates, exceptional image quality and ease of integration – that's what our industrial cameras stand for. Their robust, industrial design is the basis for long-term stability and precise image analysis in your application.

The portfolio includes CCD- and CMOS-based matrix cameras in color and monochrome versions with resolutions ranging from VGA to 25 megapixel. Our many years of expertise make us understand your requirements to provide the optimum product for your application.

**GiGE**  
VISION

**USB**  
VISION

**CAMERA**  
**Link**

**GEN*i*CAM**

*EX series*



*CX series*



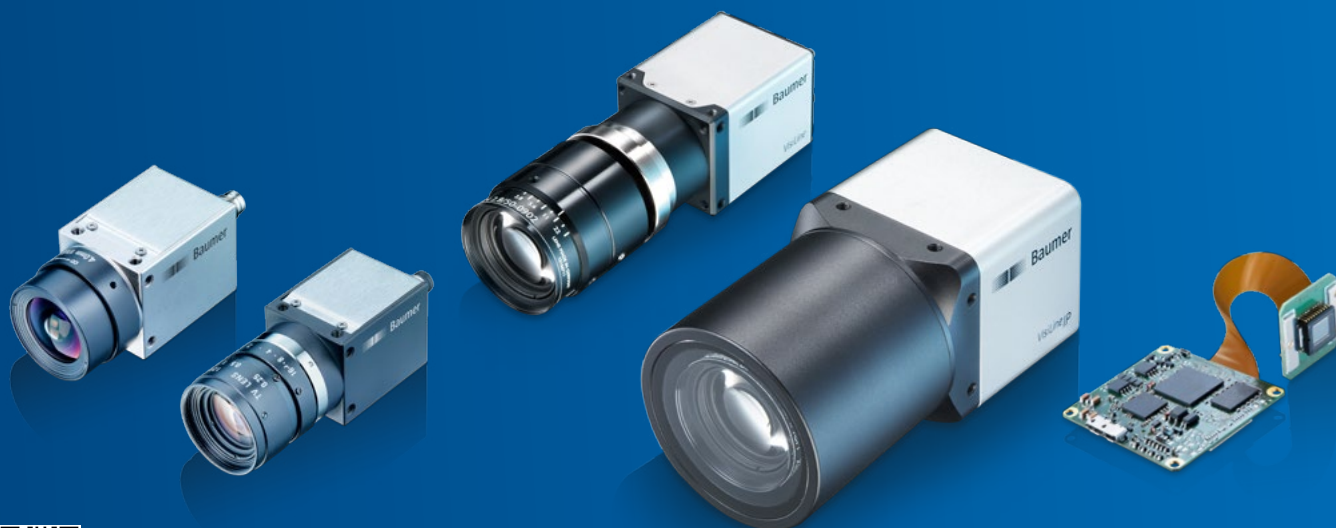
*VisiLine® series*



*VisiLine® IP*

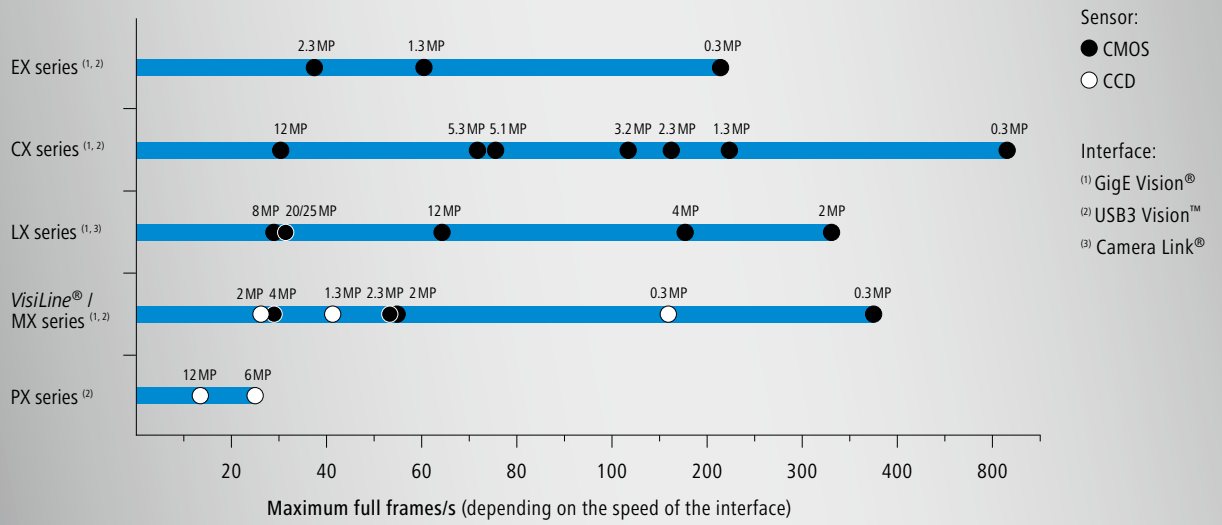


*MX series*



[www.baumer.com/cameras](http://www.baumer.com/cameras)

# Find the best matching camera series



LX series

LX VisualApplets



PX series



Highest quality for reliable, long-term stable image evaluation.

## Focus on the essential.

The small, high-performance EX cameras excel by providing top Baumer quality at the best price. Focusing on essential standard-compliant basic functionalities, the industrial cameras are ideal for most varied standard machine vision applications.

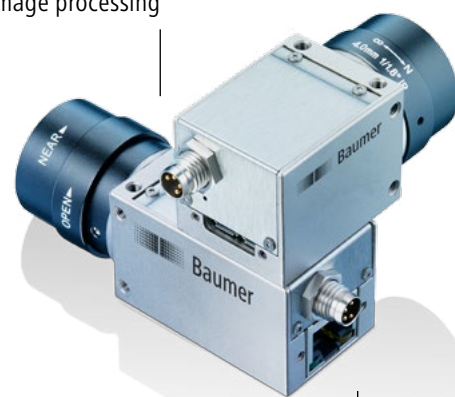
The square housing in 29×29 mm design with M3 mount on each side ensures quick and cost-efficient mechanical integration in your image processing system with high flexibility. The robust, industry-capable camera design ensures long-term stable and reliable image evaluation.

### EX series

- Up to 2 Megapixel and 217 fps
- CMOS sensors
- Integrating essential basic functionalities to match varied machine vision tasks
- CS-mount for use of cost-effective lenses

CMOS sensors of the latest generation for future-ready image processing

CS-mount reduces system costs thanks to cost-effective lenses



Robust design for long-term stable image evaluation

4-pin M8 connector for easy and cost-efficient process connection



Camera Type	Model Variants		Sensor Type	Sensor	Resolution [px]	Pixel Size [µm]	Full Frames [fps]	
	Mono	Color					GigE Vision®	USB3 Vision™
VEXG-02	•	•	1/4" CMOS	PYTHON300	640 × 480	4.8 × 4.8	217	–
VEXG-13	•	•	1/2" CMOS	PYTHON1300	1280 × 1024	4.8 × 4.8	61	–
VEXU-24	•	•	1/1.2" CMOS	IMX249	1920 × 1200	5.86 × 5.86	–	38
VEXG-25	•	•	2/3" CMOS	PYTHON2000	1920 × 1200	4.8 × 4.8	41	–

Reliable detection  
and evaluation of  
fast processes.

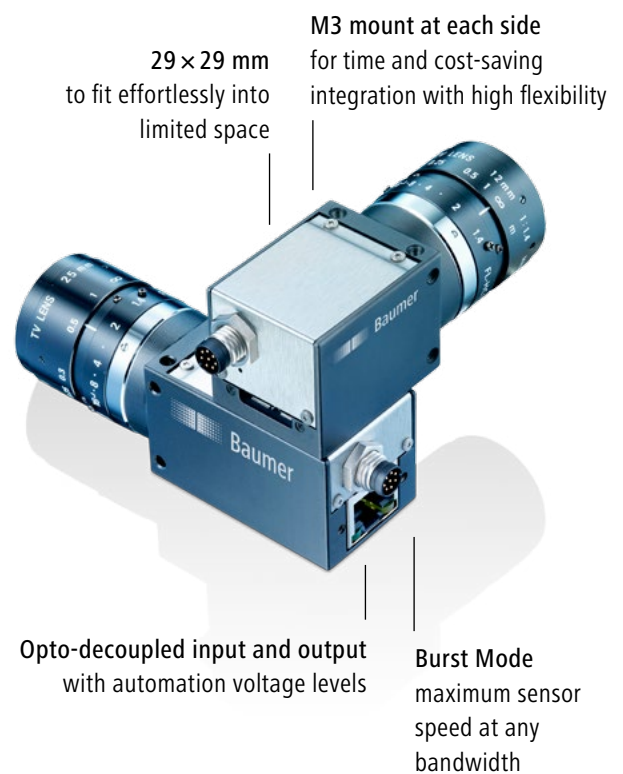
## Cutting-edge CMOS technology.

Using the cameras of the CX series, you are banking on latest CMOS sensor generation Sony® Pregius™ and ON Semiconductor® PYTHON for future-oriented applications. Among the wide variety of sensors you are sure to find the matching camera for most varied applications across all industries.

Thanks to extended functionality combined with excellent image quality and high frame rates, the CX cameras open up a wide range of applications. The 29 × 29 mm form factor ensures easy integration with high amount of flexibility – even in narrow installation environments.

### CX series

- Up to 12 Megapixel and 891 fps
- CMOS sensors
- Camera temperature range up to 65 °C
- GigE power supply: 12 – 24 V externally or PoE



**GigE**  
VISION

**USB**  
VISION

Camera Type	Model Variants		Sensor Type	Sensor	Resolution [px]	Pixel Size [µm]	Full Frames [fps]	
	Mono	Color					GigE Vision® <sup>1)</sup>	USB3 Vision™
VXCG-02 / VCXU-02 <sup>2)</sup>	•	•	1/4" CMOS	PYTHON300	640 × 480	4.8 × 4.8	595   403	891
VXCG-13 / VCXU-13 <sup>2)</sup>	•	•	1/2" CMOS	PYTHON1300	1280 × 1024	4.8 × 4.8	145   94	222
VXCG-23 <sup>2)</sup> / VCXU-23	•	•	1/1.2" CMOS	IMX174	1920 × 1200	5.86 × 5.86	81   53	165
VXCG-24 <sup>2)</sup> / VCXU-24	•	•	1/1.2" CMOS	IMX249	1920 × 1200	5.86 × 5.86	38   38	38
VXCG-25 / VCXU-25 <sup>2)</sup>	•	•	2/3" CMOS	PYTHON2000	1920 × 1200	4.8 × 4.8	59   53	167
VCXU-31	•	•	1/1.8" CMOS	IMX252	2048 × 1536	3.45 × 3.45	–	120
VXCG-32 <sup>2)</sup> / VCXU-32	•	•	1/1.8" CMOS	IMX265	2048 × 1536	3.45 × 3.45	55   39	55
VCXU-50	•	•	2/3" CMOS	IMX250	2448 × 2048	3.45 × 3.45	–	77
VXCG-51 <sup>2)</sup> / VCXU-51	•	•	2/3" CMOS	IMX264	2448 × 2048	3.45 × 3.45	35   23	35
VXCG-53 / VCXU-53 <sup>2)</sup>	•	•	1" CMOS	PYTHON5000	2592 × 2048	4.8 × 4.8	28   23	73
VCXU-123 <sup>2)</sup>	•	•	1.1" CMOS	IMX253	4096 × 3000	3.45 × 3.45	–	31
VXCG-124 <sup>2)</sup>	•	•	1.1" CMOS	IMX304	4096 × 3000	3.45 × 3.45	15   10	–

<sup>1)</sup> Burst Mode (image acquisition in the camera's internal memory) | interface <sup>2)</sup> available Q1/2017

Precise  
inspection at  
high throughput.

## Fast, high-resolution cameras.

LX series cameras are based on modern-day CMOS sensors with Global Shutter. They master complex inspection tasks with demanding requirements on detailed image acquisition and throughput. Their superb performance is owed to high sensitivity, excellent image quality and up to 25 megapixel resolution.

The GigE camera models feature Burst Mode to capture image sequences or selected regions of the image (ROI) at very high speed. Where using cameras with Dual GigE twice the frame rate for increased throughput is provided. For improved system stability, the Camera Link® models offer additional features, such as status information and checksum calculation.

Camera Link® with up to 800 MB/s  
and easy system integration using GenICam™

Multi ROI and Multi I/O as well as PoE / PoCL  
for ultimate flexibility



Flexible lens mount  
M58, M42, F-mount  
or C-mount

Single or Dual GigE  
with 240 MB/s  
high frame rates and  
easy integration

### LX series

- Up to 25 megapixel and 337 fps
- CMOS sensors
- Outstanding sensitivity
- HDR extended dynamic range



Camera Type	Model Variants			Sensor Type	Sensor	Resolution [px]	Pixel Size [µm]	Full Frames [fps]		
	Mono	Farbe	NIR <sup>2)</sup>					GigE Vision <sup>® 1)</sup>	Camera Link <sup>®</sup>	
LXG-20 / LXC-20	•	•	•	2/3" CMOS	CMV2000	2048 × 1088	5.5 × 5.5	337   111	337	
LXG-40 / LXC-40	•	•	•	1" CMOS	CMV4000	2048 × 2048	5.5 × 5.5	180   59	180	
LXG-80	•	•		4/3" CMOS	CMV8000	3360 × 2496	5.5 × 5.5	61   29	–	
LXG-120 / LXC-120	•	•		APS-C CMOS	CMV12000	4096 × 3072	5.5 × 5.5	50   19	63	
LXG-200 / LXC-200	•	•		35 mm CMOS	CMV20000	5120 × 3840	6.4 × 6.4	32   12	32	
LXG-250 / LXC-250	•	•		APS-H	PYTHON 25K	5120 × 5120	4.5 × 4.5	32   9	32	

<sup>1)</sup> Burst Mode (image acquisition in the camera's internal memory) | interface (Dual GigE) <sup>2)</sup> LXG models only



# Minimizing system cost by innovation.

## Cameras with image preprocessing.

LX camera models with *VisualApplets* technology enable integrated, application-specific image preprocessing directly in the camera's FPGA which reduces the data volume for transmission and processing. This way, the effort of algorithm calculation which requires considerable processing power is removed from the PC-based image processing system. Application performance will be enhanced while system cost is reduced.

With *VisualApplets* by Silicon Software, the graphic development environment for FPGA programming, even complex algorithms can be implemented quickly and easily. It enables efficient and economic image data processing at very high resolution and speed.

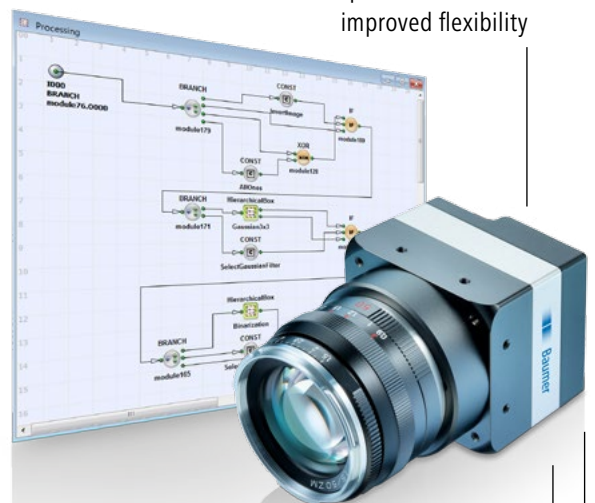
### LX *VisualApplets* cameras

- Up to 20 megapixel and 337 fps
- Flexible user-specific function extension
- Ready-to-use applet for 3D laser triangulation
- Hardware-based image preprocessing in real-time



Graphical FPGA development environment enables easy application development

Digital inputs and outputs with precise control for improved flexibility



GigE Vision® easy, flexible and cost-efficient integration

Easy system integration via GenICam™ compliant configuration



Camera Type	Model Variants		Sensor Type	Sensor	Resolution [px]	Pixel Size [µm]	Full Frames [fps]
	Mono	3D					
LXG-20.PS <sup>1)</sup>	•	•	2/3" CMOS	CMV2000	2048 × 1088	5.5 × 5.5	337   55
LXG-40.P	•		1" CMOS	CMV4000	2048 × 2048	5.5 × 5.5	74   29
LXG-120.P	•		APS-C CMOS	CMV12000	4096 × 3072	5.5 × 5.5	25   9
LXG-120.PS <sup>1)</sup>	•	•	APS-C CMOS	CMV12000	4096 × 3072	5.5 × 5.5	60   9
LXG-200.P	•		35 mm CMOS	CMV20000	5120 × 3840	6.4 × 6.4	12   6

<sup>1)</sup> available Q1/2017 <sup>2)</sup> Image acquisition and processing with *VisualApplets* | interface

Perfect image quality ensures your competitive advantage in automated production.

## Proven CCD and CMOS cameras.

Using the cameras of the *VisiLine*® series, you are relying on proven Sony® CCD sensors as well as state-of-the-art CMOS sensors by CMOSIS and Sony®. Enhanced functionalities and GigE or USB 3.0 interface ensure easy implementation in most varied applications.

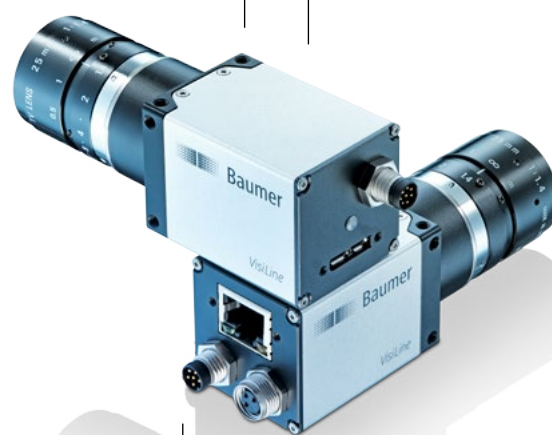
The industrial cameras feature numerous functions such as sequencer, Multi I/O and flexible wide-range power supply to help ease solving your machine vision task. The CCD models excel with excellent image quality – even at exposure times from 4 µs to 60 s. Selected CMOS models feature FPN correction and integrated HDR for efficient image evaluation.

### *VisiLine*® series

- Up to 4 megapixel and 376 fps
- CCD and CMOS sensors
- Industry-capable design with M8 connection
- IP 40 protection

12 mounting holes for maximum flexibility and reliable installation

3 outputs for enhanced flexibility in system design



Flexible power supply  
GigE: 12 – 24 V or PoE

Reliable operation  
opto-decoupled inputs and outputs with automation voltage levels

**GigE**  
VISION

**USB**  
VISION

Camera Type	Model Variants		Sensor Type	Sensor	Resolution [px]	Pixel Size [µm]	Full Frames [fps]	
	Mono	Color					GigE Vision®	USB3 Vision™
VLG-02 / VLU-02	•	•	1/4" CCD	ICX618	656 × 490	5.6 × 5.6	160	160
VLG-03 / VLU-03	•	•	1/3" CMOS	CMV300	640 × 480	7.4 × 7.4	376	376
VLG-12 / VLU-12	•	•	1/3" CCD	ICX445	1288 × 960	3.75 × 3.75	42	42
VLG-20	•	•	1/1.8" CCD	ICX274	1624 × 1228	4.4 × 4.4	27	–
VLG-22	•	•	2/3" CMOS	CMV2000	2040 × 1084	5.5 × 5.5	55	–
VLG-23	•	•	1/1.2" CMOS	IMX174	1920 × 1200	5.86 × 5.86	53	–
VLG-24	•	•	1/1.2" CMOS	IMX249	1920 × 1200	5.86 × 5.86	38	–
VLG-40	•	•	1" CMOS	CMV4000	2040 × 2044	5.5 × 5.5	29	–

Image-controlled,  
high-precision gripping  
and positioning sequences.



## Protected in harsh environments.

*VisiLine*® IP protected cameras are ideal for applications with rough ambient conditions. The IP 65 and IP 67 housings withstand both moisture and particulate contamination. They protect all critical camera components as well as the lens and eliminate the need for additional protective enclosures. The sophisticated mechanical design defies shock and vibration and ensures image acquisition with long-term stable reproducibility.

Thanks to high IP protection, light weight, robust design and single-cable solution capabilities by PoE the *VisiLine*® IP protected cameras match particularly the application requirements in robotics.

Precise positioning  
centered optical axis and  
stable sensor position

IP-rated housing  
protection IP 65/67 and  
only 220 g in weight

Flexible integration  
square housing with M3 mount  
on all sides and modular  
IP lens protection



Cost-efficient single-cable solution  
PoE Ethernet cable for robotics  
up to 100 m length

### *VisiLine*® IP cameras

- Up to 4 megapixel and 160 fps
- Standard M12 connector
- Power supply 12 – 24 V or PoE
- Vibration 10 g, shock 100 g



Camera Type	Model Variants		Sensor Type	Sensor	Resolution [px]	Pixel Size [µm]	Full Frames [fps] GigE Vision®
	Mono	Color					
VLG-02.I	•	•	1/4" CCD	ICX618	656 × 490	5.60 × 5.6	160
VLG-12.I	•	•	1/3" CCD	ICX445	1288 × 960	3.75 × 3.75	42
VLG-20.I	•	•	1/1.8" CCD	ICX274	1624 × 1228	4.40 × 4.4	27
VLG-22.I	•	•	2/3" CMOS	CMV2000	2040 × 1084	5.50 × 5.5	55
VLG-23.I	•	•	1/1.2" CMOS	IMX174	1920 × 1200	5.86 × 5.86	53
VLG-40.I	•	•	1" CMOS	CMV4000	2040 × 2044	5.50 × 5.5	29

Reproducible  
measured values  
and image quality



## Flexible board level cameras.

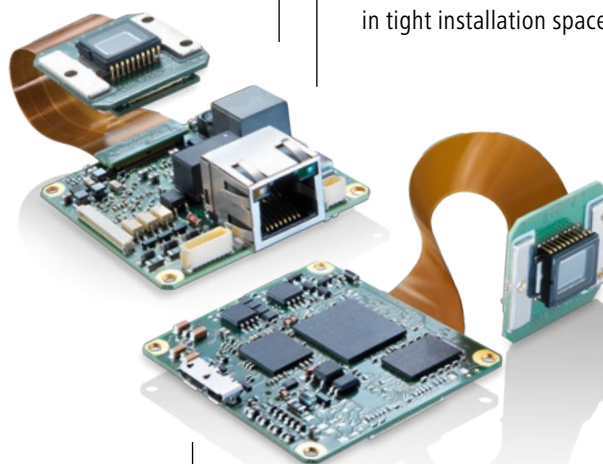
Based on the *VisiLine*® platform, cameras of the MX series are particularly developed for use in embedded systems. The remote sensor circuit board is connected to the system circuit board via flexprint to make the board level cameras fit in almost any installation space.

USB 3.0 camera models provide you with simple Plug & Play functionality and a single-cable solution. GigE cameras master a transmission distance up to 100 meter cable length and support PoE.

Digital, opto-decoupled inputs  
and outputs  
reliable protection  
against overvoltage

Flexible power supply  
GigE: 12 – 24 V or PoE

Remote sensor circuit board  
maximum flexibility  
in tight installation spaces



USB3 Vision™  
for reliable system integration

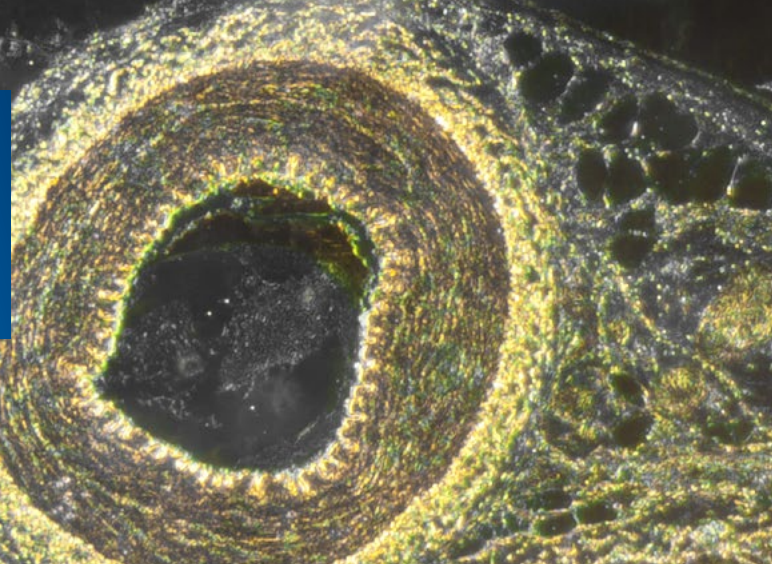
### MX series

- Up to 4 megapixel and 376 fps
- CCD and CMOS sensors
- Multi I/O for increased flexibility
- CMOS models with FPN correction and HDR



Camera Type	Model Variants		Sensor Type	Sensor	Resolution [px]	Pixel Size [µm]	Full Frames [fps]	
	Mono	Color					GigE Vision®	USB3 Vision™
MXG02 / MXU02	•	•	1/4" CCD	ICX618	656 × 490	5.6 × 5.6	160	160
MXGC03	•	•	1/3" CMOS	CMV300	640 × 480	7.4 × 7.4	376	–
MXG12 / MXU12	•	•	1/3" CCD	ICX445	1288 × 960	3.75 × 3.75	42	42
MXG20 / MXU20	•	•	1/1.8" CCD	ICX274	1624 × 1228	4.4 × 4.4	27	27
MXGC20 / MXUC20	•	•	2/3" CMOS	CMV2000	2040 × 1084	5.5 × 5.5	55	55
MXGC40 / MXUC40	•	•	1" CMOS	CMV4000	2040 × 2044	5.5 × 5.5	29	29

Capture the essential at the right moment.



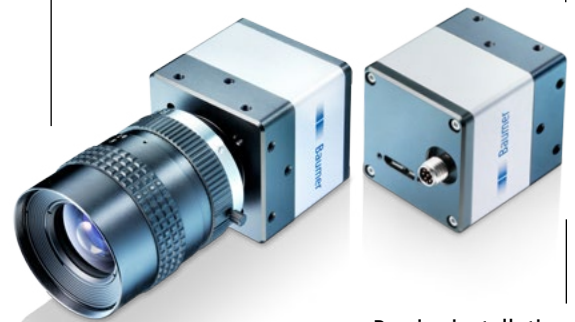
## CCD cameras for brilliant image quality.

Cameras of the PX series with USB 3.0 interface are based on state-of-the-art Sony® quad-tap CCD sensors with *EXview* HAD CCD II™ technology merging brilliant image quality, resolutions up to 12 megapixel and high speed.

Outstanding sensitivity, dynamic properties and linearity in conjunction with USB 3.0 interface open up a wide application potential. The PX cameras master diffuse light conditions and meet the highest demands on image quality, for example in microscopy, measuring technology or traffic systems.

Sequencer and Multi I/O for improved flexibility

Sony® CCD sensors with up to 12 MP resolution brilliant image quality, high frame rates and sensitivity



Precise installation square housing with 3-point mount on all sides

Compact C-mount interface wide selection of high-quality lenses

### PX series

- Up to 12 megapixel and 25 fps
- Quad-tap CCD sensors
- Flexible exposure times from 4 μs to 60 s
- High dynamic range and excellent homogeneity



Camera Type	Model Variants	Sensor Type	Sensor	Resolution [px]	Pixel Size [μm]	Full Frames [fps]
	Mono					USB3 Vision™
PXU-60.Q	•	1" CCD	ICX694	2752 × 2200	4.54 × 4.54	25
PXU-120.Q	•	1" CCD	ICX834	4248 × 2832	3.1 × 3.1	13

# Proven cameras with long-term availability.

All industrial cameras are made by Baumer – to you, this means top product quality and maximum supply reliability. We also ensure long-term availability of our proven TX and HX camera series, which are deployed all around the world in countless applications. Rely on us – for the years to come!



## TX series

Camera Type	Model Variants						Sensor Type	Sensor	Resolution <sup>1)</sup> [px]	Pixel Size [μm]	Full Frames [fps]
	Mono	Color	NIR	IP 67	PoE	Multi I/O					
TXG02	•	•					1/4" CCD	ICX618	656 × 494	5.6 × 5.6	140
TXG03	•	•		•	•	•	1/3" CCD	ICX424	656 × 494	7.4 × 7.4	90
TXG04	•	•					1/2" CCD	ICX414	656 × 494	9.9 × 9.9	56
TXG04 v2	•	•					1/2" CCD	ICX414	656 × 494	9.9 × 9.9	93
TXG06	•	•					1/2" CCD	ICX415	776 × 582	8.3 × 8.3	64
TXG08	•	•		•	•		1/3" CCD	ICX204	1032 × 776	4.65 × 4.65	28
TXG12	•	•					1/3" CCD	ICX445	1296 × 966	3.75 × 3.75	32
TXG13	•	•		•	•	•	1/2" CCD	ICX267	1392 × 1040	4.65 × 4.65	20
TXG14	•	•	•				2/3" CCD	ICX285	1392 × 1040	6.45 × 6.45	20
TXG14f	•	•					2/3" CCD	ICX285	1392 × 1040	6.45 × 6.45	30
TXG20	•	•		•	•	•	1/1.8" CCD	ICX274	1624 × 1236	4.4 × 4.4	16
TXG50	•	•		•	•	•	2/3" CCD	ICX625	2448 × 2050	3.45 × 3.45	15

<sup>1)</sup> Resolution with color models can have minimal variations.



## HX series

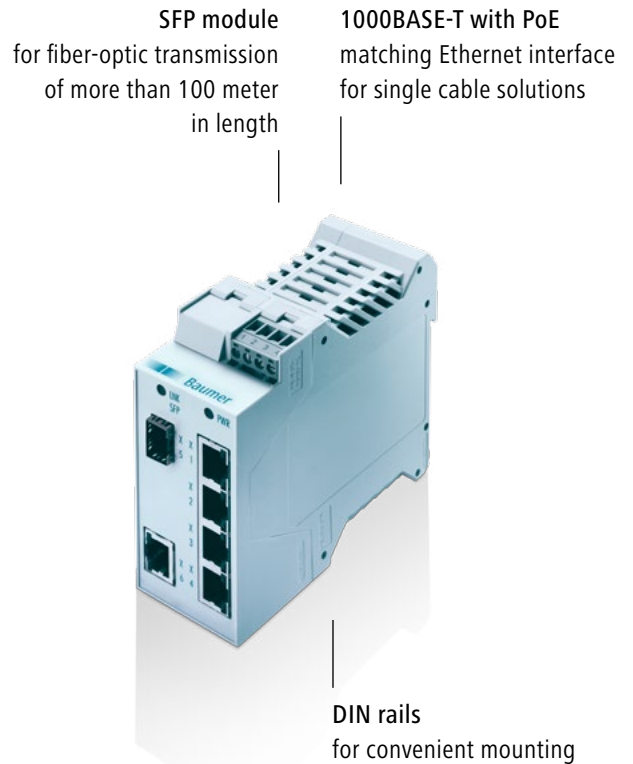
Camera Type	Model Variants			Sensor Type	Sensor	Resolution [px]	Pixel Size [μm]	Full Frames [fps]	
	Mono	Color	NIR					GigE Vision <sup>® 1)</sup>	Camera Link <sup>®</sup>
HXC13	•			1.4" CMOS	Lupa-1300-2	1280 × 1024	14 × 14	–	500
HXG20 / HXC20	•	•	•	2/3" CMOS	CMV2000	2048 × 1088	5.5 × 5.5	337   105	337
HXG40 / HXC40	•	•	•	1" CMOS	CMV4000	2048 × 2048	5.5 × 5.5	180   56	180

<sup>1)</sup> Burst Mode (image acquisition in the camera's internal memory) | interface (Dual GigE)

# Especially developed network components.

Our in-house developed network components are optimally harmonized and particularly conceived for industrial image processing. They complete your image processing system in an ideal way. Based on PoE standard they simplify power supply of the GigE Vision® cameras and reduce cabling effort.

The cameras support data rates up to 1000 Mbit/s. Copper cables allow for a maximum length of 100 m. SFP modules and fiber-optic cable allow for an even more extended range. Supporting jumbo frames cuts down on CPU load and processing effort. Selected models provide 24 V supply and eliminate the need for an additional power unit. DIN rails provide convenient mounting capabilities.



## Network components

- Simplifies the design of multi-camera systems
- Power supply via PoE
- Supporting jumbo frames
- Robust, industrial design



Component	Connections	Jumbo Frames [kByte]	DC Supply [V]	PoE	Performance per output [W]	Dimensions [mm]
GigE Power Injector	4x 8P8C (RJ-45)	–	48	•	15.4	22.5 × 99 × 113.5
GigE Switch	4x 8P8C (RJ-45)	up to 10	12 ... 24	–	–	22.5 × 99 × 113.5
GigE Power Switch (4 port)	4x 8P8C (RJ-45)	up to 10	48	•	15.4	22.5 × 99 × 113.5
GigE Power Switch Extended (6 port)	5x 8P8C (RJ-45) 1x SFP module	up to 10	48	•	15.4	45 × 99 × 113.5

# Intelligent software integration.

Quick and platform-neutral camera integration in the application and software environment is conveniently realized by high-performance Software Development Kits (SDK) Baumer GAPI and Camera Link® SDK with Application Programming Interface (API).

		GAPI SDK v2.x	Camera Link® SDK <sup>1)</sup>
Interfaces	GigE/ Dual GigE	•	–
	USB 3.0	•	–
	Camera Link®	–	•
Hardware platform	x86/x64   ARM®	•   •	•   –
Operating systems	Windows® 7   8   10	•   •   •	•   •   –
	Linux® (Debian® / Ubuntu® / Fedora® / openSUSE®)	• <sup>2)</sup>	–
Programming languages	C++   C#	•   •	•   –

<sup>1)</sup> For LX cameras with Camera Link®. Other Baumer cameras with Camera Link® run with GAPI SDK v1.7.1.

<sup>2)</sup> Supporting GigE Vision® compliant cameras



Download  
Software Development Kits  
[www.baumer.com/cameras/SDK](http://www.baumer.com/cameras/SDK)

## Baumer GAPI SDK

Fully supporting GenICam™ and GenTL, Baumer GAPI ensures flexible and easy camera integration. Numerous programming examples and documentations as well as varied options for testing and visualization of the camera explorer ease integration even further.

For embedded vision applications with Linux® ARM®-based systems, the SDK features several standard and basic packages to utilize the manufacturer evaluation kit's respectively own software designs.

## Baumer Camera Link® SDK

The Camera Link® cameras of the LX series feature GenCP (Generic Control Protocol) for convenient and quick configuration. Increasingly supported by frame grabber manufacturers, the need for an additional SDK will be eliminated. Alternatively, the Baumer Camera Link® SDK may also be used for evaluation and integration. It includes a configuration tool to setup and test all camera functions and to use extended features such as events. The camera will conveniently integrate in your software environment based on GenICam™ reference implementation.





# Flexibility by compatibility.

Every task in image processing is unique and imposes individual requirements on both camera and related machine vision software. We meet them all.

## Flexibility by standard compliance.

Hassle-free compatibility of GenICam™, the Baumer GAPI generic application programming interface, together with standard-optimized drivers for GigE Vision®, USB3 Vision™ and Camera Link® simplify camera integration and allow for drop-in replacement across all series.



## Third Party Software Support.

Full compliance to all relevant standards in camera engineering and development, regular compatibility tests and the close cooperation with our software partners give you the freedom to implement user-specific third party software and ensure trouble-free integration of our cameras in any of your application tasks.

Among others, Baumer cameras are compatible to the following third-party software:



Baumer sustains partnership with<sup>1)</sup>:



<sup>1)</sup> Software support of individual models may be provider-specific and is recommended for corresponding validation.

# Making it all easy.

We provide you with everything you need to integrate our cameras quickly and easily into your systems: From proper network components and accessories up to individual Starter Kits, you will have everything that's necessary.

## Matching accessories for your system.

There is more to an image processing system than just a camera: cables, PCI interface cards, filters, adapters and mountings or lenses. We help you to find the accessories that match your application and provide you with a comprehensive range of cross-interface accessories that are optimally harmonized. Since the system is only as reliable as its individual components, you can be sure our components underwent comprehensive testing and inspection – for long-term longevity and reliability in the image processing application.

## Starter Kits: Just unpack and go.

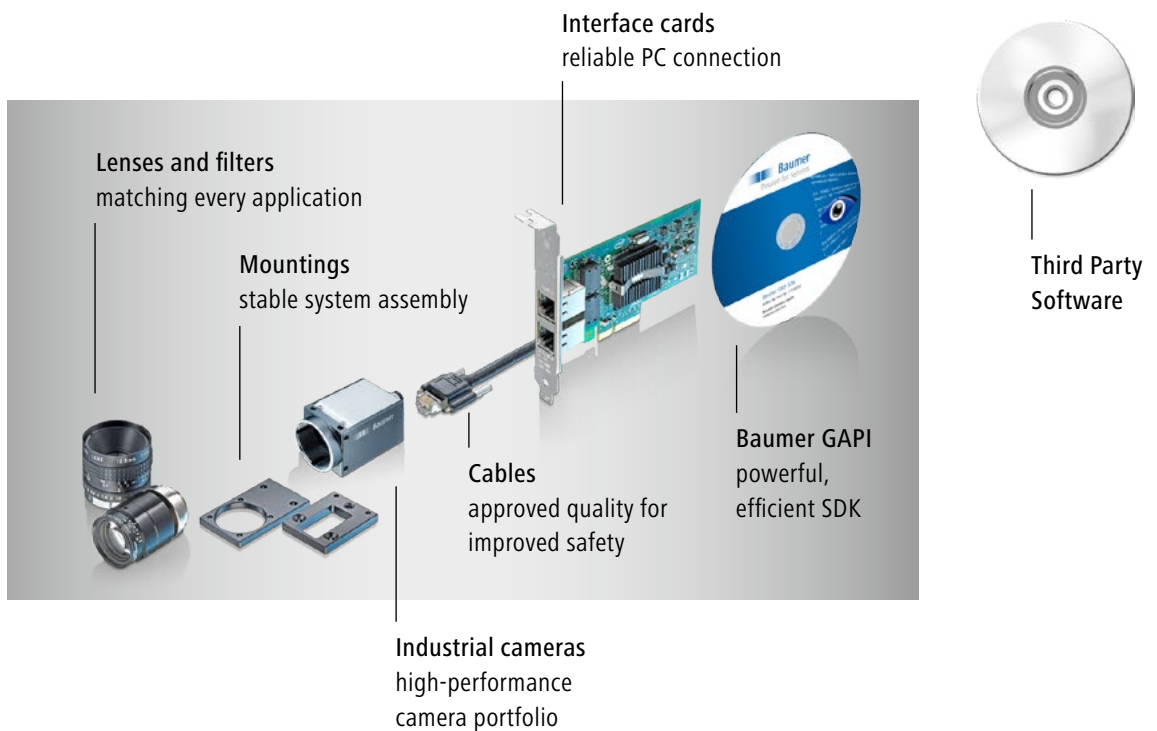
Our starter kits are individually compiled to match the related camera series and will support you in evaluating a camera. You can focus entirely on the solution while we provide you with everything required for set up – from cable to mountings on to software.



Your Starter Kit  
Request today your  
individual starter kit:  
[www.baumer.com/vision/starterkits](http://www.baumer.com/vision/starterkits)



Lighting



**Lenses and filters**  
matching every application

**Mountings**  
stable system assembly

**Cables**  
approved quality for improved safety

**Interface cards**  
reliable PC connection

**Baumer GAPI**  
powerful, efficient SDK

**Industrial cameras**  
high-performance camera portfolio

**Third Party Software**

# Machine vision competence at a glance.



High-performance  
digital industrial cameras



Intuitive  
vision sensors



Customer-specific  
hardware and software design

# Worldwide presence.



## Africa

Algeria  
Cameroon  
Côte d'Ivoire  
Egypt  
Morocco  
Reunion  
South Africa

## America

Brazil  
Canada  
Colombia  
Mexico  
United States  
Venezuela

## Asia

Bahrain  
China  
India  
Indonesia  
Israel  
Japan  
Kuwait  
Malaysia  
Oman  
Philippines  
Qatar  
Saudi Arabia  
Singapore  
South Korea  
Taiwan  
Thailand  
UAE

## Europe

Austria  
Belgium  
Bulgaria  
Croatia  
Czech Republic  
Denmark  
Finland  
France  
Germany  
Greece  
Hungary  
Italy  
Malta  
Martinique  
Netherlands  
Norway  
Poland  
Portugal  
Romania  
Russia  
Serbia  
Slovakia  
Slovenia  
Spain  
Sweden  
Switzerland  
Turkey  
United Kingdom

## Oceania

Australia  
New Zealand



For more information  
about our worldwide  
locations go to:  
[www.baumer.com/worldwide](http://www.baumer.com/worldwide)



**Baumer Group**  
International Sales  
P.O. Box · Hummelstrasse 17 · CH-8501 Frauenfeld  
Phone +41 (0)52 728 1122 · Fax +41 (0)52 728 1144  
[sales@baumer.com](mailto:sales@baumer.com) · [www.baumer.com](http://www.baumer.com)

Represented by: