

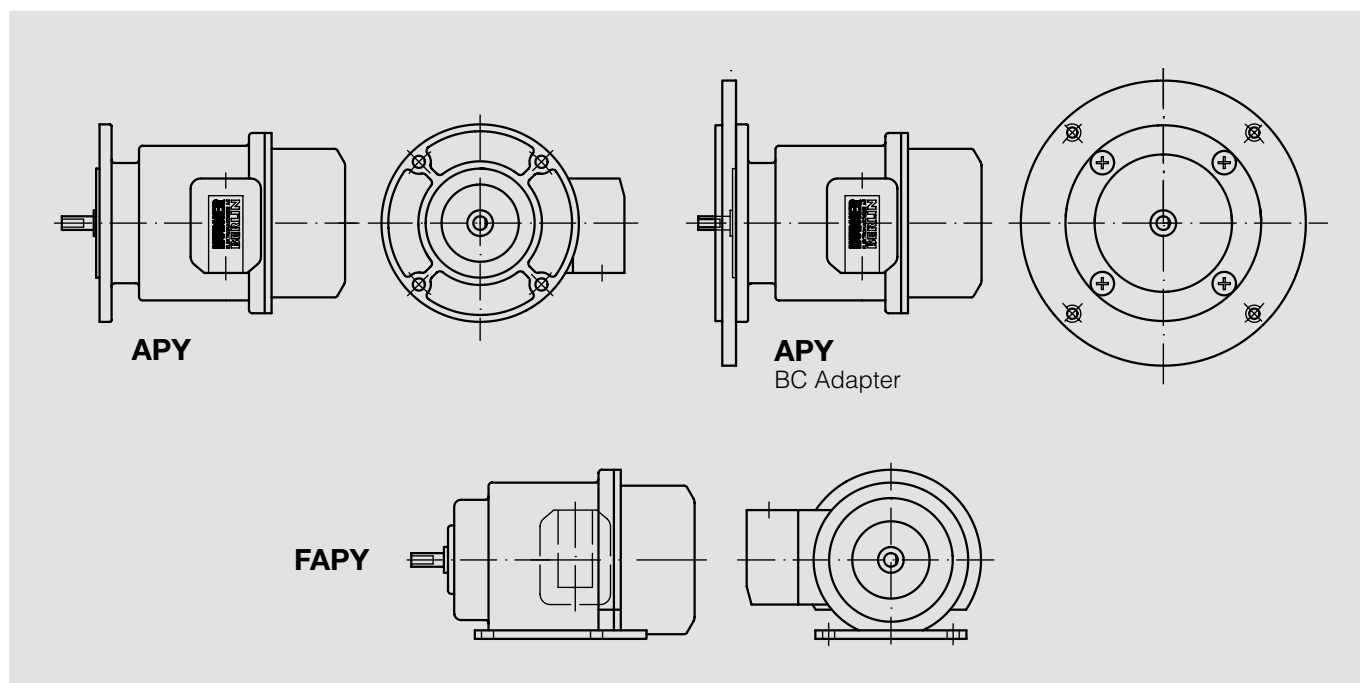
HÜBNER Analog-Tachos

LongLife Tachogenerators

Installation and operating instructions

HUBNER
BERLIN

SIEMENS America



Important notes

- Tachogenerators are **precision speed measurement devices**, which must be handled by skilled personnel with care during transportation, mounting and operation.
- The tachogenerator APY/ FAPY with solid shaft are driven via a torsionally stiff, flexible coupling (e.g. Hübner spring disk coupling K35) which should be slid onto the shaft with minimum axial pressure
- If included currents occur in the motor shaft, it is recommended to use an insulated coupling (e. g. Hübner spring disk coupling K 35 with insulated hub).
- **Hammering** the coupling on the shaft is not permitted because the ball bearings may be damaged.
- Shafts with a key are dynamically balanced in the factory. Therefore drives elements like couplings or pulleys must be balanced on a smooth mandrel without key.
- LongLife tachogenerators are **free of maintenance**. The expected **operating life** is governed by the **ball bearings**, which are equipped with a permanent lubrication. Repair or maintenance requiring dismantling should be carried out by the manufacturer.

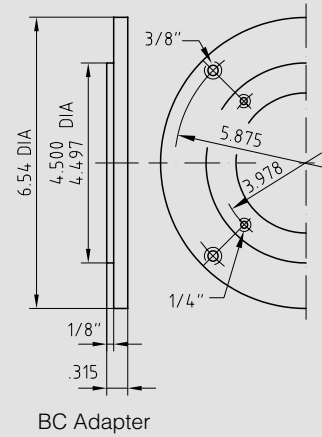
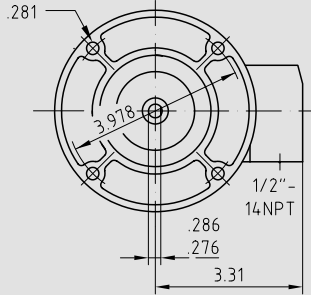
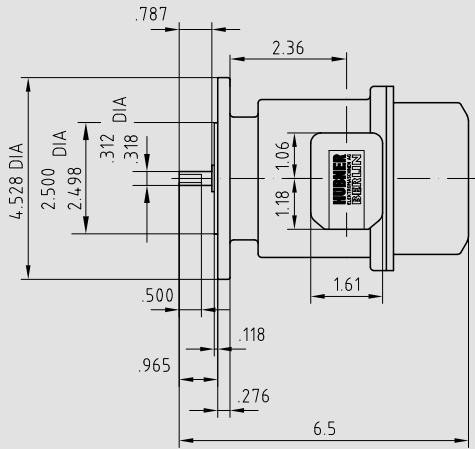
Type	Quantity	Carbon brushes	
		Part no.	*min. length
APY	1 Set	S7 / H7: ET.02.1057 L	5,3
FAPY	1 Set		

* When the minimum brush length is reached, the brushes should be replaced and the commutator area should be cleaned with dry compressed air in order to ensure proper operation.

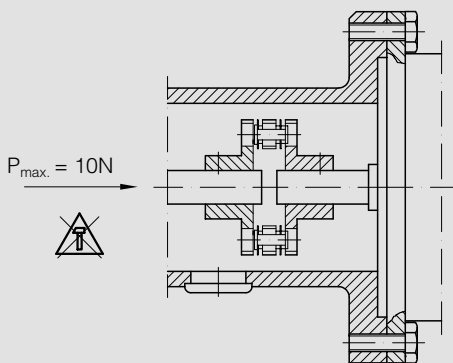
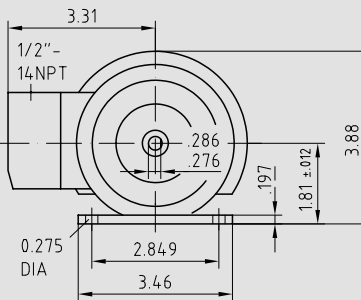
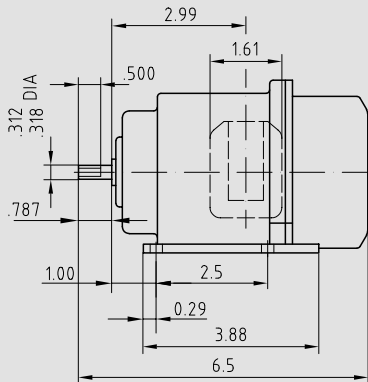
Detailed specifications of all individual products are available.

LongLife Tachogenerator

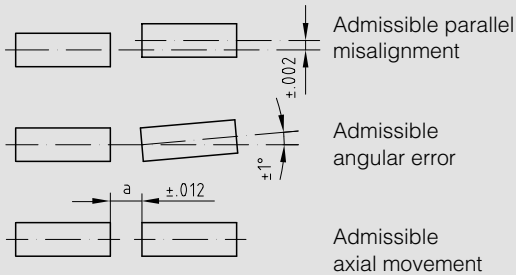
APY



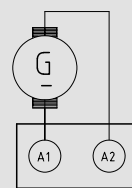
FAPY



Max. permissible mounting tolerance when the HÜBNER K 35 spring disk coupling is used



Polarity for clockwise rotation of the drive, viewing mounting face



apy-fapy-us_mb - 06A1 (21.11.2006)