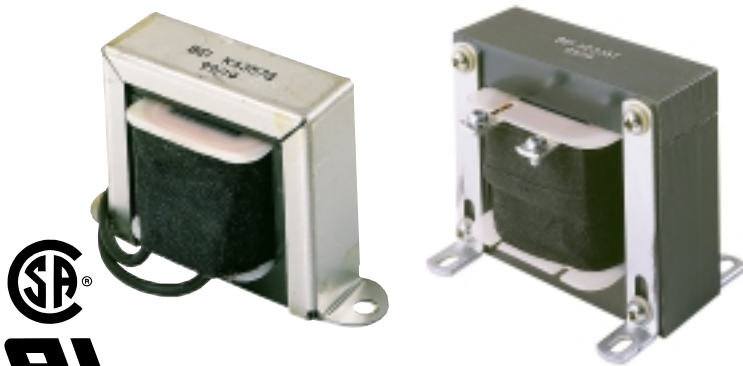
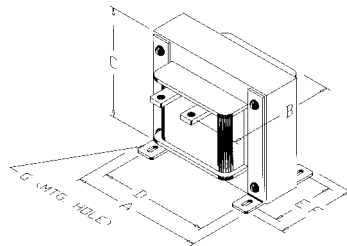
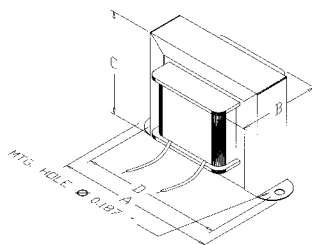


- Economical open type or metal covers.
- We can design to meet your specifications.
- Tolerance is $\pm 15\%$ on inductance and resistance.
- Inductance are measured with rated DC current flowing.
- Class A (105 °C), B (130 °C), F (155 °C) or H (180 °C) insulation system.
- CSA approved (LR63264) and UL recognized (E193917).



KA

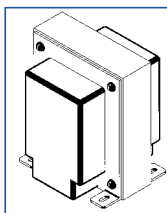
KD



Size	A	B	C	D	E	F	Mounting Hole dim.	lbs
1	1.63	0.88	0.81	1.38	-	-	0.125	0.12
6	2.06	1.25	1.19	1.75	-	-	0.187	0.19
12	2.38	1.38	1.38	2.00	-	-	0.187	0.35
25	2.81	1.55	1.69	2.38	-	-	0.187	0.58
40	3.25	1.80	2.00	2.81	-	-	0.187	0.83
56	3.25	2.05	2.00	2.81	-	-	0.187	1.1
120	4.00	2.37	2.63	3.56	-	-	0.187	2.2
120D	3.00	3.88*	2.75	2.50	2.00	2.63	.221 x .375	2.5
225	3.75	4.13*	3.50	3.13	2.25	2.88	.221 x .375	3.8
250	3.75	4.38*	3.50	3.13	2.25	2.88	.221 x .375	4.7
500	4.50	5.00*	4.13	3.75	2.50	4.00	.221 x .375	8.0
750	4.50	6.00*	4.13	3.75	3.50	5.00	.221 x .375	13.0
1500	5.25	6.75*	4.88	4.38	4.50	5.75	.312 x .687	22.0
2500	5.25	7.75*	4.88	4.38	5.50	6.75	.312 x .687	26.0
4000	7.50	8.00*	6.63	5.50	4.75	6.00	.368 x .750	48.0
5000	8.75	8.25*	6.63	6.25	5.25	6.50	.375 x .750	52.0

All dimensions are in inches.

* Approximate dim. including copper tabs.



Also available are vertical enclosed reactors.

KA Cat. No Channel mounting	Induc. Henrys	D.C. Current Amp.	D.C. resistance ohms	Max.op. D.C. Volts	Size
KA104H	0.001	10.0	0.038	400	40
KA154F	0.0015	5.0	0.07	400	25
KA254M	0.0025	10.0	0.044	500	120
KA304D	0.003	1.5	0.14	300	6
KA604F	0.006	2.0	0.3	400	12
KA105M	0.010	5.0	0.16	500	120
KA155M	0.015	4.0	0.25	500	120
KA285M	0.028	3.0	0.43	500	120
KA605M	0.060	2.0	0.7	500	120
KA306M	0.300	1.0	6.0	500	120
KA606D	0.600	0.100	86	300	1
KA606N	0.600	0.750	11	500	120
KA107H	1.0	0.300	40	400	56
KA157G	1.5	0.200	56	400	25
KA157H	1.5	0.25	60	400	56
KA157N	1.5	0.500	27	500	120
KA227D	2.2	0.050	305	300	1
KA357H	3.5	0.150	57	400	40
KA507E	5.0	0.05	270	400	12
KA507F	5.0	0.075	135	400	25
KA507J	5.0	0.150	105	400	56
KA707D	7.0	0.025	770	300	1
KA707K	7.0	0.150	100	500	120
KA108G	10	0.065	205	400	40
KA108J	10	0.100	262	400	56
KA108K	10	0.125	155	500	120
KA158E	15	0.03	1026	400	12
KA158H	15	0.075	411	400	56
KA158K	15	0.100	256	500	120
KA208E	20	0.02	1666	300	6
KA308G	30	0.04	595	400	40
KA608D	60	0.008	2750	400	12
KA159E	150	0.008	3700	400	25

Insulation class of these KA chokes is 'A' 105 °C.

KD Cat. No Bracket mounting	Induc. mH	D.C. Current Amp.	D.C. resistance ohms	Insula. Temp. Class	Size
KD104N	1.0	20	0.013	A	120D
KD104T	1.0	30	0.009	A	250
KD104W	1.0	50	0.005	A	750
KD104XA	1.0	75	0.004	B	1500
KD104XC	1.0	100	0.003	F	2500
KD104XE	1.0	140	0.0023	F	5000
KD254T	2.5	20	0.022	A	250
KD254XD	2.5	75	0.008	F	4000
KD504P	5.0	10	0.040	A	225
KD504XD	5.0	50	0.021	F	4000
KD105T	10	10	0.07	A	250
KD105XD	10	40	0.021	F	4000
KD205V	20	10	0.013	B	500
KD205XE	20	30	0.045	F	5000
KD305S	30	5	0.23	A	250
KD305XC	30	20	0.13	F	4000
KD505XA	50	10	0.165	B	1500
KD106XC	100	10	0.42	F	2500

Bigger sizes available