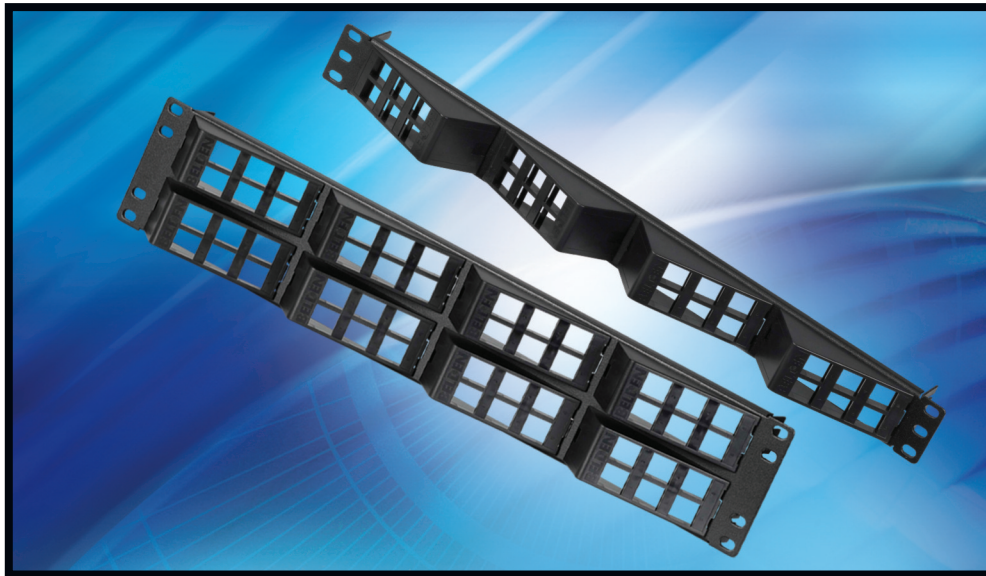


**NP 276**

**AngleFlex™ Patch Panels**

Designed for Data Center and Telecommunications Room installations, these patch panels facilitate intuitive patch cord routing and eliminate the need for horizontal cable management.



**Belden® AngleFlex Patch Panels Offer Installation Flexibility and Improved Cable Management Functionality**

The AngleFlex Patch Panel Series is part of the KeyConnect Patch Panel family. It is differentiated by offering better manageability and improved installation flexibility for Data Center and Telecommunication Room installations.

**Features & Benefits**

- Patent-pending angles provide intuitive left, right or bi-directional patch cord routing and more efficient switch connection
- Removable angled inserts provide front access for easier termination and maintenance
- Provides a shallower, low-profile design for more room inside cabinets
- Angled inserts eliminate the need for horizontal cable management, for a 27% space savings per rack
- Jack orientation provides more reliable connection performance
- Angled design provides more labeling space for overall easier identification
- LabelFlex laser printable white label sheet supplied with each panel
- Rear cable management brackets facilitate cable routing
- Compatible with standard 19 in. equipment racks, cabinets or wall-mount brackets
- Compatible with KeyConnect Modular Jacks

**Applications**

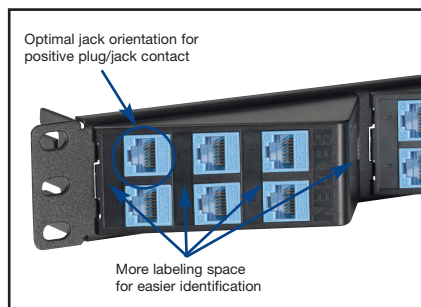
- Horizontal distribution or equipment terminations in Data Centers or Telecommunications Rooms
- Interconnect terminations in Consolidation Points

**Installation Tips**

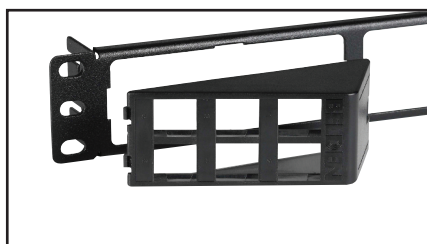
- Plan the rack/cabinet layout prior to patch panel installation
- Include Cable Management products (see [www.belden.com](http://www.belden.com) for more information) in installation for optimum cable and patch cord routing
- Use the LabelFlex software (see [www.belden.com](http://www.belden.com) for more information) to print quality identification labels
- Use the Connecting Tool (AX100749) to terminate KeyConnect Modular Jacks in the Termination Station (AX101852)
- Use the Release Tool (AX101185) to remove KeyConnect Modular Jacks from a patch panel

**Packaging**

- Individually packaged in a cardboard box, including 2 sets of mounting screws (4x10-32 and 4x12-24), cable management brackets, Velcro ties and a white LabelFlex label sheet



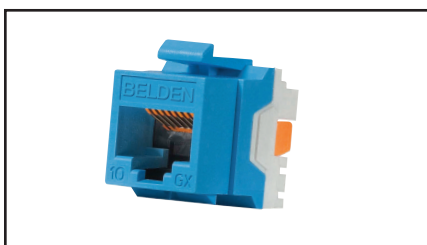
Sideways orientation of the jacks makes patch cord routing easier and ensures optimum plug/jack contact. More labeling space is an added feature.



Removable angled inserts have a 25° angle and are 1.54" in depth.



Each insert comes unpopulated and is compatible with KeyConnect Modular Jacks.



Use Belden's KeyConnect Modular Jacks to populate AngleFlex Patch Panels (AX104156).

## Technical Specifications

- Dimensions (HxWxD)**
- Patch Panel without Modules and Cable Management Brackets
    - 1U panel: 45 x 483 x 62 mm (1.75 x 19 x 2.75 in.)
    - 2U panel: 90 x 483 x 62 mm (3.5 x 19 x 2.75 in.)
- Materials**
- Panel: steel, 16 gauge, textured powder coated paint, black
  - Plastic Inserts: UL 94V-0 plastic, black

## Ordering Information

Description	Belden Part Number
-------------	--------------------

### Patch Panels

AngleFlex Patch Panels (Empty)	
AngleFlex Patch Panel, 24-port, 1U, Black (Empty)	AX103248
AngleFlex Patch Panel, 48-port, 2U, Black (Empty)	AX103249

### Modular Jacks

KeyConnect Modular Jacks			
Color	10GX	CAT6+	CAT5E
Gray	AX102280	AX101318	AX101307
Almond	AX102281	AX101319	AX101308
White	AX102282	AX101320	AX101309
Black	AX102283	AX101321	AX101310
Ivory	AX103073	AX103076	AX103079
Orange	AX104152	AX104189	AX104182
Red	AX104153	AX104190	AX104183
Yellow	AX104154	AX104191	AX104184
Green	AX104155	AX104192	AX104185
Blue	AX104156	AX104193	AX104186
Purple	AX104157	AX104194	AX104187
Orange, TIA 606 Color	AX102284	AX101322	AX101311
Red, TIA 606 Color	AX102285	AX101323	AX101312
Yellow, TIA 606 Color	AX102286	AX101324	AX101313
Green, TIA 606 Color	AX102287	AX101325	AX101314
Blue, TIA 606 Color	AX102288	AX101326	AX101315
Purple, TIA 606 Color	AX102289	AX101327	AX101316

### Accessories

AngleFlex Patch Panel Accessories	
Blank Insert, Black	AX102263
Modular Jack Dust Cover, Clear	AX101790
Connecting Tool	AX100749
Termination Station	AX101852
Patch Cord Tool	AX102775
Release Tool	AX101185
Cable Preparation Tool	1797B

All information is subject to change without notice, since Belden reserves the right to change its products as progress in engineering and manufacturing methods or other circumstances may warrant.