




DXMB3 • dxModular flow control valves, 3-way

DXMB3


- Power supply U_v : AC 24 Volt $\pm 10\%$, 50 Hz
- Control signal Y_1 : 0..10 Vdc or via MODBUS
- T° sensor(s) : with T₁ and T₂ medium temperature sensor(s)
- System connection : DN15..DN50 threaded connections PN16
- Medium : water, +2°C..+100°C
- Communication : MODBUS RTU/MSTP (RS485)
- User interface : LCD display with navigation pad
- Accessories : on page 22

TYPE				DN	V_{10}	V_{max}	Δp_s	Sensors				Lc	
								flow	Δp	T ₁	T ₂		
					[l/h]	[l/h]	[kPa]					[m]	
DXMB3D015A.11421	▲	-	●	●	15	1.202	3.800	200	●	-	●	●	2
DXMB3D020A.11421	▲	-	●	●	20	1.802	5.700	200	●	-	●	●	2
DXMB3D025A.11421	▲	-	●	●	25	2.530	8.000	200	●	-	●	●	2
DXMB3D032A.11421	▲	-	●	●	32	3.257	10.300	200	●	-	●	●	2
DXMB3D040A.11421	▲	-	●	●	40	6.704	21.200	200	●	-	●	●	2
DXMB3D050A.11421	▲	-	●	●	50	8.949	28.300	200	●	-	●	●	2

Options

DXMB3 ___ A_ 0_	without MODBUS RTU/MSTP (RS485) communication interface
DXMB3 ___ A_ 3_	without LCD display
DXMB3 ___ A_ 1_	with only one medium temperature sensor (T ₁)
DXMB3 ___ A_ 0_ ▲	without T ₁ and T ₂ medium temperature sensors

 For information on the selection and sizing, see page 20 and 21.

 remote energy monitoring
 V_{10} flow range at 10kPa
 V_{max} flow range (0.. V_{max})
 Δp_s maximum close-off pressure

T₁ sensor Nr.1 for medium T° measurement
 T₂ sensor Nr.2 for medium T° measurement
 Lc length of the main cable
 ▲ standard

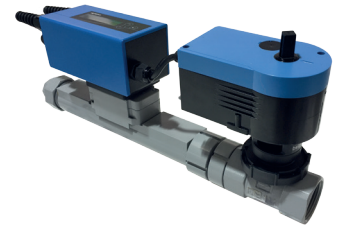
datasheet



DXMB2 • dxModular flow control valves, 2-way

DXMB2

- Power supply U_V : AC 24 Volt $\pm 10\%$, 50 Hz
- Control signal Y_1 : 0..10 Vdc or via MODBUS
- T° sensor(s) : with T_1 and T_2 medium temperature sensor(s)
- System connection : DN15..DN50 threaded connections PN16
- Medium : water, $+2^\circ\text{C}..+100^\circ\text{C}$
- Communication : MODBUS RTU/MSTP (RS485)
- User interface : LCD display with navigation pad
- Accessories : on page 22



TYPE				DN	V_{10}	V_{max}	Δp_s	Sensors				Lc	
								flow	Δp	T_1	T_2		
					[l/h]	[l/h]	[kPa]					[m]	
DXMB2D015A.11421	▲	●	-	●	15	1.202	3.800	240	●	-	●	●	2
DXMB2D020A.11421	▲	●	-	●	20	1.802	5.700	240	●	-	●	●	2
DXMB2D025A.11421	▲	●	-	●	25	2.530	8.000	240	●	-	●	●	2
DXMB2D032A.11421	▲	●	-	●	32	3.257	10.300	240	●	-	●	●	2
DXMB2D040A.11421	▲	●	-	●	40	6.704	21.200	240	●	-	●	●	2
DXMB2D050A.11421	▲	●	-	●	50	8.949	28.300	240	●	-	●	●	2

Options

DXMB2__A__0	without MODBUS RTU/MSTP (RS485) communication interface
DXMB2__A.3	without LCD display
DXMB2__A__1	with only one medium temperature sensor (T_1)
DXMB2__A__0 ▲	without T_1 and T_2 medium temperature sensors

For information on the selection and sizing, see page 20 and 21.

- remote energy monitoring
- V_{10} flow range at 10kPa
- V_{max} flow range ($0..V_{max}$)
- Δp_s maximum close-off pressure

- T_1 sensor Nr.1 for medium T° measurement
- T_2 sensor Nr.2 for medium T° measurement
- Lc length of the main cable
- ▲ standard

datasheet

