

# Sonder Sensor

## 813 系列



## M12 Automatisierungstechnik - Sonder - T-Kodierung

### M12 Automation Technology - Special - T-Coding

#### Kabelsteckverbinder

- Schraubverriegelung nach DIN EN 61076-2-111
- Schutzart IP67 <sup>1)</sup>
- Einfache Montage
- Winkelsteckverbinder in 4 Positionen einstellbar

#### Flanschsteckverbinder

- Schraubverriegelung nach DIN EN 61076-2-111
- Schutzart IP67 <sup>1)</sup>
- Einfache Montage
- Tauchlötanschluss/Litzen
- Verschiedene Bauformen

#### Cable Connectors

- Screw locking according to DIN EN 61076-2-111
- Degree of protection IP67 <sup>1)</sup>
- Easy assembly
- Angled connector adjustable in 4 positions

#### Panel Mount Connectors

- Screw locking according to DIN EN 61076-2-111
- Degree of protection IP67 <sup>1)</sup>
- Easy assembly
- Dip solder termination/single wires
- Various variants

<sup>1)</sup>Erläuterung der Schutzarten siehe technische Informationen./ <sup>1)</sup>Explanation of protection standards see technical information.

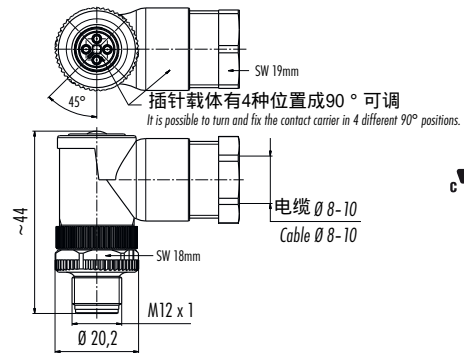
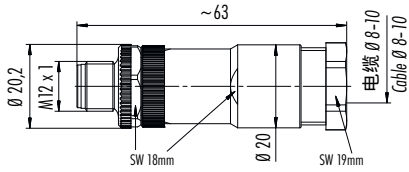
电缆连接器，针，带T-coding，电源  
Male cable connector with T-coding, Power

弯角连接器，针，带T-coding，电源  
Male angled connector with T-coding, Power

图例/ Figure



尺寸图/ Drawing



订货信息/ Order Data

芯数 Contacts	电缆出口直径 Cable outlet	订货号 Ordering-No.
4	8-10 mm	99 0629 19 04

芯数 Contacts	电缆出口直径 Cable outlet	订货号 Ordering-No.
4	8-10 mm	99 0629 58 04

技术参数 / Specifications

芯数	4	Number of contacts
锁紧方式	M12螺母锁紧 / screw	Connector locking system
接线方式	螺钉接线 / screw clamp	Termination
导线截面	max. 1,5 mm <sup>2</sup> (max. AWG 16)	Wire gauge
电缆出口直径	8-10 mm	Cable outlet
防护等级	IP67	Degree of protection
插拔周期	>100插拔周期 / > 100 mating cycles	Mechanical operation
最高工作温度	+ 85 °C	Upper temperature
最低工作温度	- 40 °C	Lower temperature
额定电压	63 V	Rated voltage
额定冲击电压	1500 V	Rated impulse voltage
污染等级	3	Pollution degree
过电压等级	III	Overvoltage categorie
绝缘等级	III	Material group
额定电流 (40 °C)	12 A	Rated current (40 °C)
触点电阻	≤ 3 mΩ	Contact resistance
插针材料	CuZn (黄铜 / brass)	Material of contact
插针表面材料	Au (金 / gold)	Contact plating
插头主体材料	PA	Material of contact body
外壳材料	PA	Material of housing

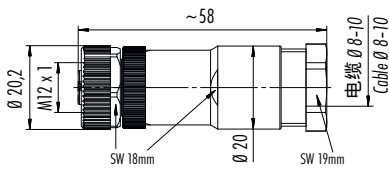
电缆连接器，孔，带T-coding，电源  
Female cable connector with T-coding, Power

弯角连接器，孔，带T-coding，电源  
Female angled connector with T-coding, Power

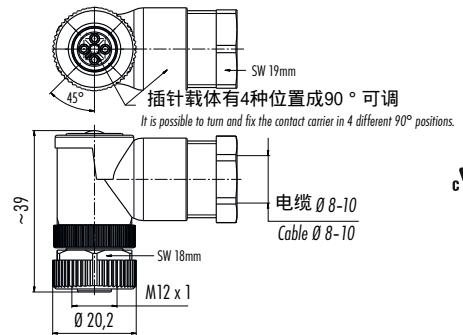
图例/ Figure



尺寸图/ Drawing



US



US

订货信息/ Order Data

芯数 Contacts	电缆出口直径 Cable outlet	订货号 Ordering-No.
4	8-10 mm	99 0630 19 04

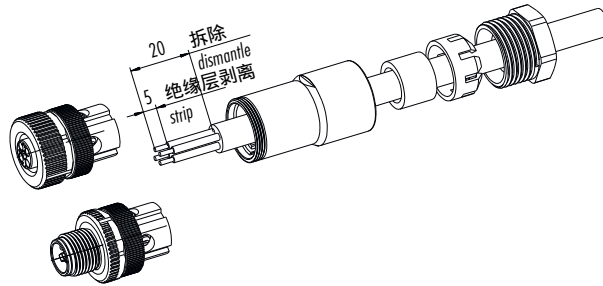
芯数 Contacts	电缆出口直径 Cable outlet	订货号 Ordering-No.
4	8-10 mm	99 0630 58 04

技术参数 / Specifications

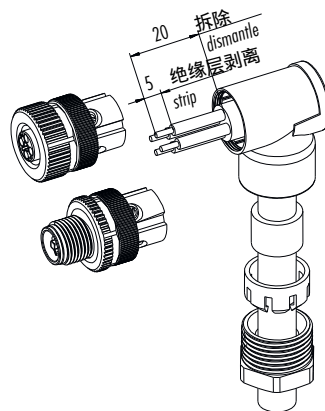
芯数	4	Number of contacts
锁紧方式	M12螺母锁紧 screw	Connector locking system
接线方式	螺钉接线/screw clamp	Termination
导线截面	max. 1,5 mm <sup>2</sup> (max. AWG 16)	Wire gauge
电缆出口直径	8-10 mm	Cable outlet
防护等级	IP67	Degree of protection
插拔周期	>100插拔周期 / > 100 mating cycles	Mechanical operation
最高工作温度	+ 85 °C	Upper temperature
最低工作温度	- 40 °C	Lower temperature
额定电压	63 V	Rated voltage
额定冲击电压	1500 V	Rated impulse voltage
污染等级	3	Pollution degree
过电压等级	III	Overvoltage categorie
绝缘等级	III	Material group
额定电流 (40 °C)	12 A	Rated current (40 °C)
触点电阻	≤ 3 mΩ	Contact resistance
插针材料	CuSn(青铜/bronze)	Material of contact
插针表面材料	Au(金/gold)	Contact plating
插头主体材料	PA	Material of contact body
外壳材料	PA	Material of housing

安装指南  
Assembly instruction

电缆连接器裸线度量，螺钉接线，不带屏蔽  
Strip measures cable connectors, screw clamp connection, not shieldable



弯角连接器裸线度量，螺钉接线，不带屏蔽  
Strip measures angled connectors, screw clamp connection, not shieldable

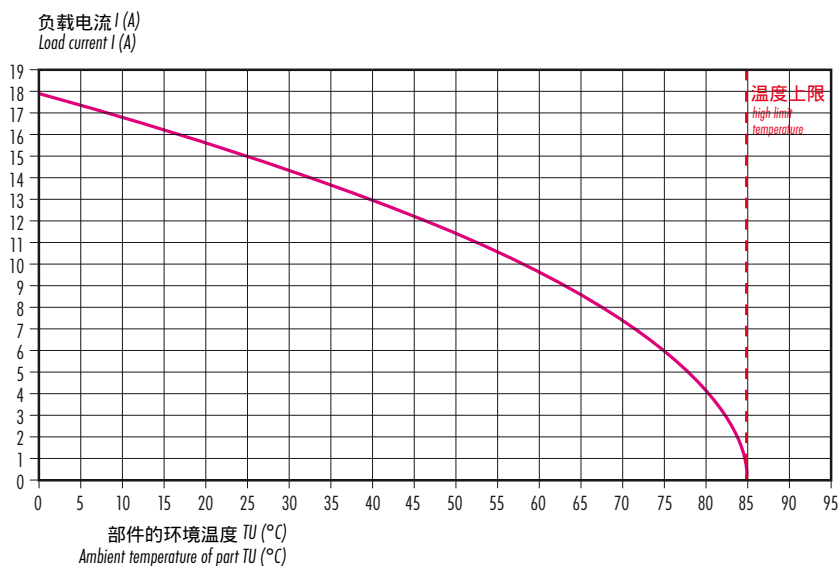


额定  
Rating

额定参量曲线  
符合DIN EN 60512标准  
适用于电源电缆连接器

Derating curve  
according to DIN EN 60512 for  
POWER cable connectors

T-coding 4芯系列  
T-coding 4 pole version





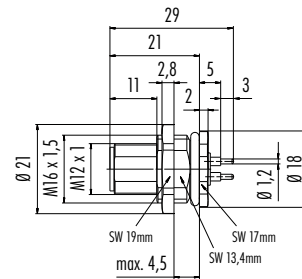
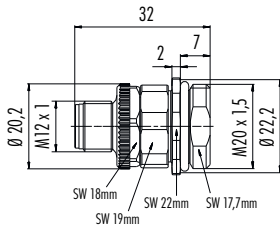
面板安装连接器，针，带T-coding，电源，螺钉接线  
Male panel mount connector with T-coding, Power, screw clamp connection

面板安装连接器，针，带T-coding，电源，板前固定，浸焊  
Male panel mount connector with T-coding, Power, front fastened, dip solder

图例/ Figure



尺寸图/ Drawing



订货信息/ Order Data

芯数 Contacts	安装螺纹尺寸 Fixing thread	订货号 Ordering-No.
4	M20 x 1,5	99 0633 500 04

芯数 Contacts	安装螺纹尺寸 Fixing thread	订货号 Ordering-No.
4	M16 x 1,5	09 0631 90 04

技术参数 / Specifications

芯数	4	Number of contacts
锁紧方式	M12螺母锁紧 Screw	Connector locking system
接线方式	螺钉接线，浸焊 / screw clamp, dip solder	Termination
导线截面	max. 1,5 mm <sup>2</sup> (max. AWG 16)/—	Wire gauge
电缆出口直径	—	Cable outlet
防护等级	IP67	Degree of protection
插拔周期	>100插拔周期 / > 100 mating cycles	Mechanical operation
最高工作温度	+ 85 °C	Upper temperature
最低工作温度	- 40 °C	Lower temperature
额定电压	63 V	Rated voltage
额定冲击电压	1500 V	Rated impulse voltage
污染等级	3	Pollution degree
过电压等级	III	Overvoltage categorie
绝缘等级	III	Material group
额定电流 (40 °C)	12 A	Rated current (40 °C)
触点电阻	≤ 3 mΩ	Contact resistance
插针材料	CuZn (黄铜/brass)	Material of contact
插针表面材料	Au(金/gold)	Contact plating
插头主体材料	PA	Material of contact body
外壳材料	铸锌镀镍, CuZn(黄铜镀镍/brass nickel plated)	Material of housing

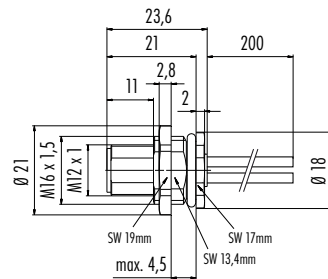
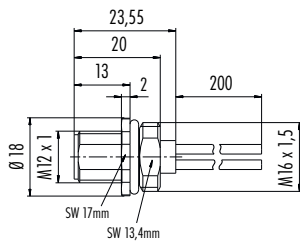
面板安装连接器，针，带T-coding，电源，带连接线  
Male panel mount connector with T-coding, Power, with single wires

面板安装连接器，针，带T-coding，电源，板前固定，带连接线  
Male panel mount connector with T-coding, Power, front fastened, with single wires

图例/ Figure



尺寸图/ Drawing



订货信息/ Order Data

芯数 Contacts	安装螺纹尺寸 Fixing thread	订货号 Ordering-No.
4	M16 x 1,5	09 0631 700 04

芯数 Contacts	安装螺纹尺寸 Fixing thread	订货号 Ordering-No.
4	M16 x 1,5	09 0631 120 04

技术参数 / Specifications

芯数	4	Number of contacts
锁紧方式	M12螺母锁紧 screw	Connector locking system
接线方式	已装配连接线(AWG 16)/single wires (AWG 16)	Termination
导线截面	max. 1,5 mm <sup>2</sup> (max. AWG 16)	Wire gauge
电缆出口直径	—	Cable outlet
防护等级	IP67	Degree of protection
插拔周期	>100插拔周期 / > 100 mating cycles	Mechanical operation
最高工作温度	+ 85 °C	Upper temperature
最低工作温度	- 40 °C	Lower temperature
额定电压	63 V	Rated voltage
额定冲击电压	1500 V	Rated impulse voltage
污染等级	3	Pollution degree
过电压等级	III	Overvoltage categorie
绝缘等级	III	Material group
额定电流 (40 °C)	12 A	Rated current (40 °C)
触点电阻	≤ 3 mΩ	Contact resistance
插针材料	CuZn (黄铜/brass)	Material of contact
插针表面材料	Au (金/gold)	Contact plating
插头主体材料	PA	Material of contact body
外壳材料	铸锌镀镍 /zinc diecasting nickel plated	Material of housing

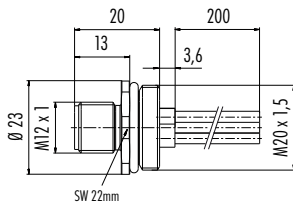


面板安装连接器，针，带T-coding，电源，带连接线，M20x1.5  
Male panel mount connector with T-coding, Power, with single wires, M20 x 1,5

图例/ Figure



尺寸图/ Drawing



订货信息/ Order Data

芯数 Contacts	安装螺纹尺寸 Fixing thread	订货号 Ordering-No.
4	M20 x 1,5	09 0631 642 04

--

技术参数 / Specifications

芯数	4	Number of contacts
锁紧方式	M12螺母锁紧 6screw	Connector locking system
接线方式	已装配连接线(AWG 16)/single wires (AWG 16)	Termination
导线截面	max. 1,5 mm <sup>2</sup> (max. AWG 16)	Wire gauge
电缆出口直径	—	Cable outlet
防护等级	IP67	Degree of protection
插拔周期	>100插拔周期/> 100 mating cycles	Mechanical operation
最高工作温度	+ 85 °C	Upper temperature
最低工作温度	- 40 °C	Lower temperature
额定电压	63 V	Rated voltage
额定冲击电压	1500 V	Rated impulse voltage
污染等级	3	Pollution degree
过电压等级	III	Overvoltage categorie
绝缘等级	III	Material group
额定电流 (40 °C)	12 A	Rated current (40 °C)
触点电阻	≤ 3 mΩ	Contact resistance
插针材料	CuZn (黄铜/brass)	Material of contact
插针表面材料	Au(金/gold)	Contact plating
插头主体材料	PA	Material of contact body
外壳材料	CuZn (黄铜镀镍/brass nickel plated)	Material of housing

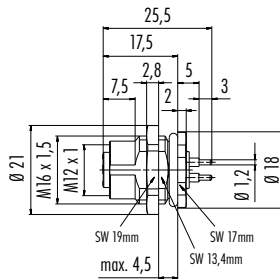
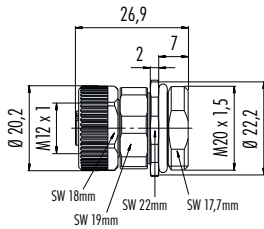
面板安装连接器，孔，带T-coding，电源，螺钉接线  
Female panel mount connector with T-coding, Power, screw clamp connection

面板安装连接器，孔，带T-coding，电源，板前固定，浸焊  
Female panel mount connector with T-coding, Power, front fastened, dip solder

图例/ Figure



尺寸图/ Drawing



订货信息/ Order Data

芯数 Contacts	安装螺纹尺寸 Fixing thread	订货号 Ordering-No.
4	M20 x 1,5	99 0634 500 04

芯数 Contacts	安装螺纹尺寸 Fixing thread	订货号 Ordering-No.
4	M16 x 1,5	09 0632 90 04

技术参数 / Specifications

芯数	4	Number of contacts
锁紧方式	M12螺母锁紧 screw	Connector locking system
接线方式	螺钉接线，浸焊 / screw clamp, dip solder	Termination
导线截面	max. 1,5 mm <sup>2</sup> (max. AWG 16)/—	Wire gauge
电缆出口直径	—	Cable outlet
防护等级	IP67	Degree of protection
插拔周期	>100插拔周期 / > 100 mating cycles	Mechanical operation
最高工作温度	+ 85 °C	Upper temperature
最低工作温度	- 40 °C	Lower temperature
额定电压	63 V	Rated voltage
额定冲击电压	1500 V	Rated impulse voltage
污染等级	3	Pollution degree
过电压等级	III	Overvoltage categorie
绝缘等级	III	Material group
额定电流 (40 °C)	12 A	Rated current (40 °C)
触点电阻	≤ 3 mΩ	Contact resistance
插针材料	CuZn (黄铜 / brass) CuSn (青铜 / bronze)	Material of contact
插针表面材料	Au (金 / gold)	Contact plating
插头主体材料	PA	Material of contact body
外壳材料	铸锌镀镍, CuZn (黄铜镀镍 / brass nickel plated)	Material of housing

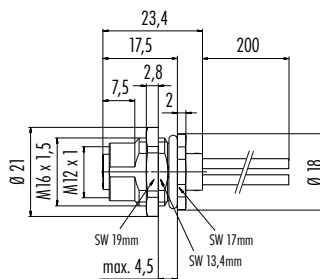
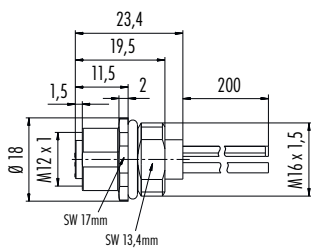
面板安装连接器，孔，带T-coding，电源，带连接线  
Female panel mount connector with T-coding, Power, with single wires

面板安装连接器，孔，带T-coding，电源，板前固定，带连接线  
Female panel mount connector with T-coding, Power, front fastened, with single wires

图例/ Figure



尺寸图/ Drawing



订货信息/ Order Data

芯数 Contacts	安装螺纹尺寸 Fixing thread	订货号 Ordering-No.
4	M16 x 1,5	09 0632 700 04

芯数 Contacts	安装螺纹尺寸 Fixing thread	订货号 Ordering-No.
4	M16 x 1,5	09 0632 120 04

技术参数 / Specifications

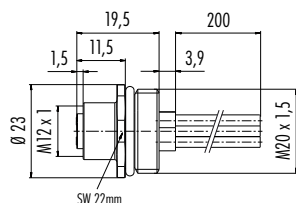
芯数 Contacts	4	Number of contacts
锁紧方式	M12螺母锁紧 screw	Connector locking system
接线方式	已装配连接线(AWG 16)/single wires (AWG 16)	Termination
导线截面	max. 1,5 mm <sup>2</sup> (max. AWG 16)	Wire gauge
电缆出口直径	—	Cable outlet
防护等级	IP67	Degree of protection
插拔周期	>100插拔周期/> 100 mating cycles	Mechanical operation
最高工作温度	+ 85 °C	Upper temperature
最低工作温度	- 40 °C	Lower temperature
额定电压	63 V	Rated voltage
额定冲击电压	1500 V	Rated impulse voltage
污染等级	3	Pollution degree
过电压等级	III	Overvoltage categorie
绝缘等级	III	Material group
额定电流(40 °C)	12 A	Rated current (40 °C)
触点电阻	≤ 3 mΩ	Contact resistance
插针材料	CuSn(青铜/bronze)	Material of contact
插针表面材料	Au(金/gold)	Contact plating
插头主体材料	PA	Material of contact body
外壳材料	铸锌镀镍/zinc diecasting nickel plated	Material of housing

面板安装连接器，孔，带T-coding，电源，带连接线，M20x1.5  
Female panel mount connector with T-coding, Power, with single wires, M20 x 1,5

图例/ Figure



尺寸图/ Drawing



订货信息/ Order Data

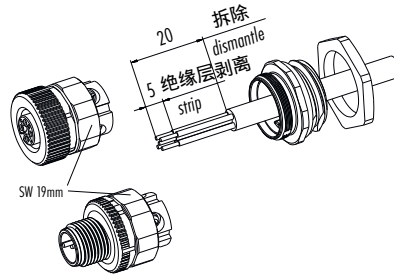
芯数 Contacts	安装螺纹尺寸 Fixing thread	订货号 Ordering-No.
4	M20 x 1,5	09 0632 642 04

技术参数 / Specifications

芯数	4	Number of contacts
锁紧方式	M12螺母锁紧 screw	Connector locking system
接线方式	已装配连接线(AWG 16)/single wires (AWG 16)	Termination
导线截面	max. 1,5 mm <sup>2</sup> (max. AWG 16)	Wire gauge
电缆出口直径	—	Cable outlet
防护等级	IP67	Degree of protection
插拔周期	>100插拔周期 /> 100 mating cycles	Mechanical operation
最高工作温度	+ 85 °C	Upper temperature
最低工作温度	- 40 °C	Lower temperature
额定电压	63 V	Rated voltage
额定冲击电压	1500 V	Rated impulse voltage
污染等级	3	Pollution degree
过电压等级	III	Overvoltage categorie
绝缘等级	III	Material group
额定电流 (40 °C)	12 A	Rated current (40 °C)
触点电阻	≤ 3 mΩ	Contact resistance
插针材料	CuSn(青铜/bronze)	Material of contact
插针表面材料	Au(金/gold)	Contact plating
插头主体材料	PA	Material of contact body
外壳材料	CuZn(黄铜镀镍/brass nickel plated)	Material of housing

安装指南  
Assembly instruction

面板安装连接器裸线度量，螺钉接线，不带屏蔽  
Strip measures panel mount connectors, screw clamp connection, not shieldable



导线连接器截面  
Wire cross section  
max. 1,5 mm<sup>2</sup> 4-polig/contacts

插头  
Contact insert  
4 x 90° verdrehbar/adjustable

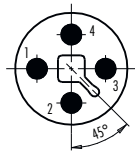
拧紧扭矩  
Tightening torque  
SW 19 Mutter/nut = 5 Nm M18 x 0,75  
M20 x 1,5 = 5 Nm

针位图  
Contact arrangements

插孔，针（接触面）  
Male insert (mating side)

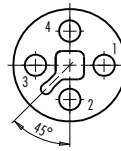
插孔，孔（接触面）  
Female insert (mating side)

4 芯  
4 contacts



	X	Y
1	-2,55	0,00
2	0,00	-2,55
3	2,55	0,00
4	0,00	2,55

- 1 棕 / brown
- 2 白 / white
- 3 蓝 / blaue
- 4 黑 / black



	X	Y
1	2,55	0,00
2	0,00	-2,55
3	-2,55	0,00
4	0,00	2,55

- 1 棕 / brown
- 2 白 / white
- 3 蓝 / blaue
- 4 黑 / black

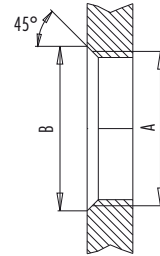
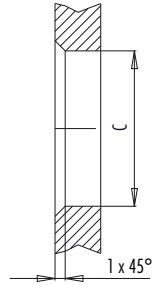
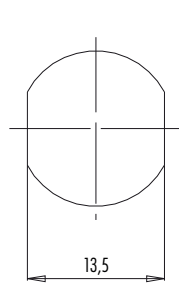
安装截面  
Panel cut out

面板安装连接器  
Panel mount connectors

带平面抗旋转装置  
With flats as anti-rotation device

带钻孔  
With bore hole

带螺纹  
With thread to screw in



	A	B	C
PG 9	PG 9	16,2	15,3
M16x1,5	M16x1,5	17,0	16,1

拧紧所用扭矩 / Tightening moment

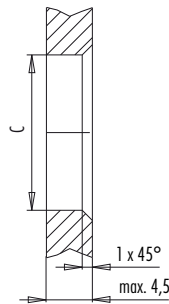
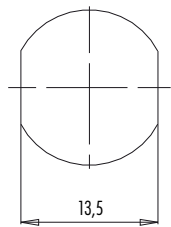
金属底座 / Metal housing 6,25 Nm  
塑料底座 / Plastic housing 3,75 Nm

其它选择 / alternativ

面板安装连接器，板前固定  
Panel mount connectors, front fastened

带平面抗旋转装置  
With flats as anti-rotation device

带钻孔  
With bore hole

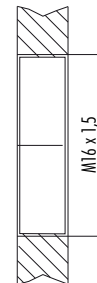


	C
PG 9	15,3
M16x1,5	16,1

拧紧所用扭矩 / Tightening moment

金属底座 / Metal housing 6,25 Nm  
塑料底座 / Plastic housing 3,75 Nm

面板安装连接器，位置可调  
Panel mount connectors positioning possible



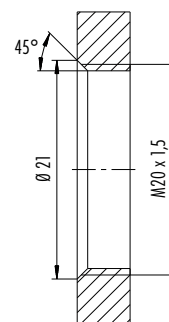
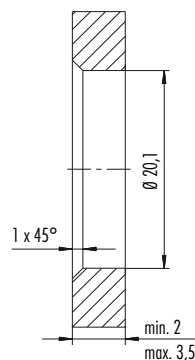
拧紧所用扭矩 / Tightening moment

金属底座 / Metal housing 6,25 Nm  
塑料底座 / Plastic housing 3,75 Nm

面板安装连接器，螺钉接线  
Panel mount connectors screw clamp connection

带钻孔  
With bore hole

带螺纹  
With thread to screw in



拧紧所用扭矩 / Tightening moment  
M20 x 1,5 5 Nm