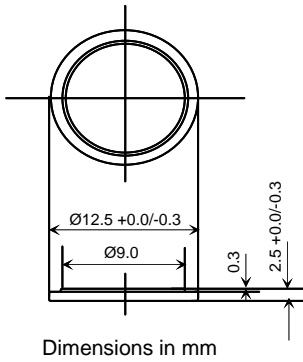


CHEMISTRY
SYSTEM
MODEL

LITHIUM MANGANESE DIOXIDE
PRIMARY Li/MnO₂
CR1225

SPECIFICATIONS

Nominal voltage	3.0V
Nominal capacity (@0.05mA, cut-off 2.0V)	48mAh
Continuous standard load	0.05mA
Operating temperature	-20°C / +60°C
Weight	1.0g



Standard and customized tab configurations are available upon request.

WARNING: DO NOT short-circuit, charge between "+" and "-".
DO NOT over-discharge, put in fire, disassemble.
Finish sealing less than 5 seconds at 200°C~250°C.
When the battery is discharged to cut-off voltage,
dispose of it in compliance with federal, state and
local laws or regulations.

