



Lampholder system for PGZ18 Philips MasterColour CDM Elite MW  
A combination of various advantages



Your Connection to Light



Lampholder PGZ18, a new BJB high performer.

## Lampholder system for PGZ18 Philips MasterColour CDM Elite MW

### Prerequisites...

- Secure fixing of the lamp due to tried and tested "Twist & Lock" technique
- Innovative contact-system for a safe electrical connection
- Precise centering of the lamp
- Alternatively for screw-fixing or with fixing bracket



## Lampholder system for lamps with the base PGZ18. Supporting components for architectural lighting indoor and outdoor

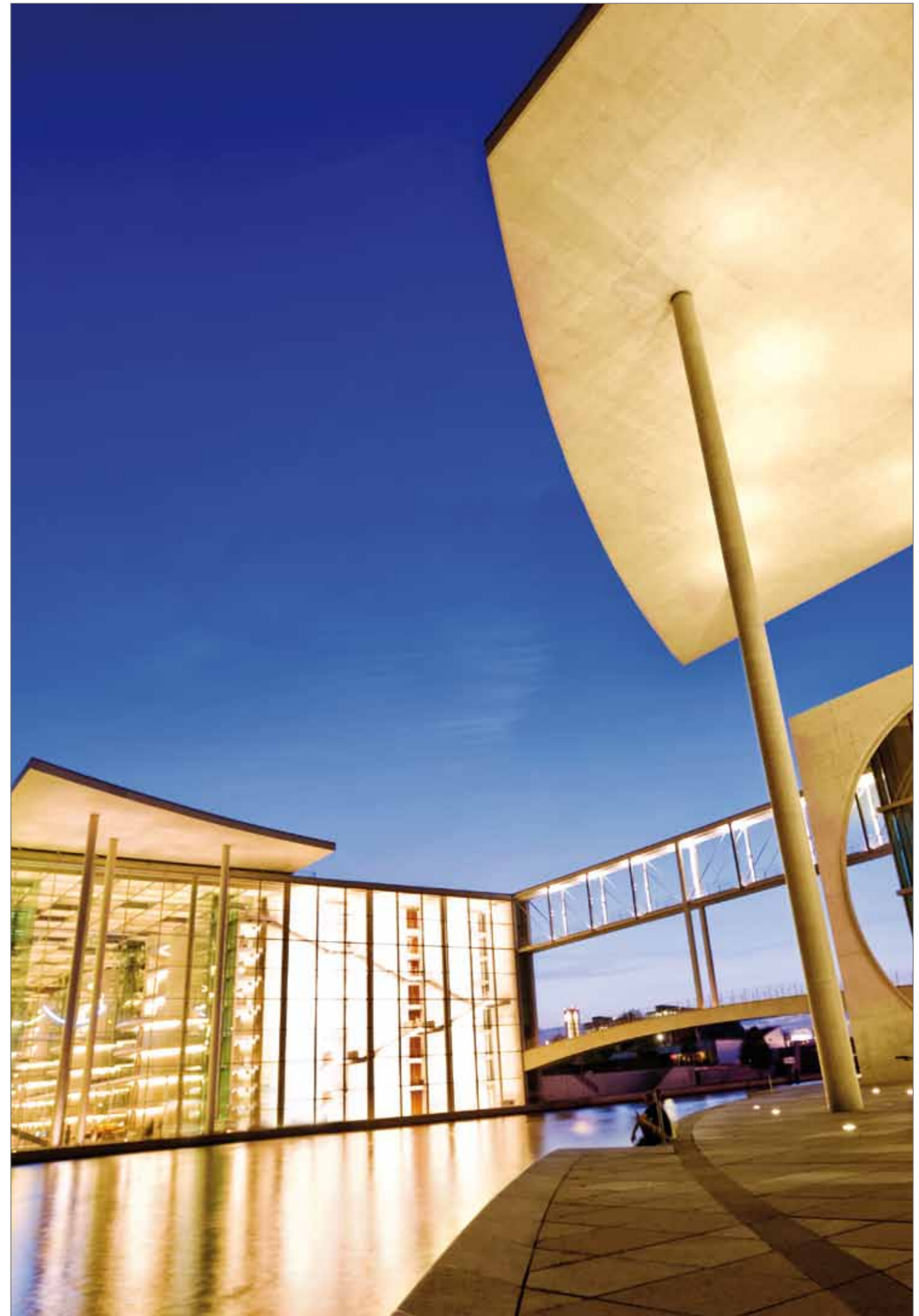
The holder system 25.715 was developed by BJB for the Philips Master Colour CDM Elite MW with the new base PGZ18. These lamps are available in the wattages 210 W.

The lampholder system of 25.715 BJB is exactly matched to this type of lamp. It includes the tried and tested "Twist & Lock" technique for secure lamp fixing and also provides an innovative contact system, ensuring a safe electrical connection in all situations. Furthermore, the solid ceramic version has been designed to precisely center the lamp in the lampholder system.

In order to offer the lighting manufacturer the use of different hole patterns,

we will supply our 25.715 alternatively for screw-fixing or with a fixing-bracket for hole distances of 30 and 56 mm.

Fields of application for this new lampholder / lamp base system by Philips and BJB are applications for outdoor, architectural lighting, street lights, lighting for buildings and parking sites. In the indoor field it will be suitable for Highbay applications in warehouses, sales- or production room.



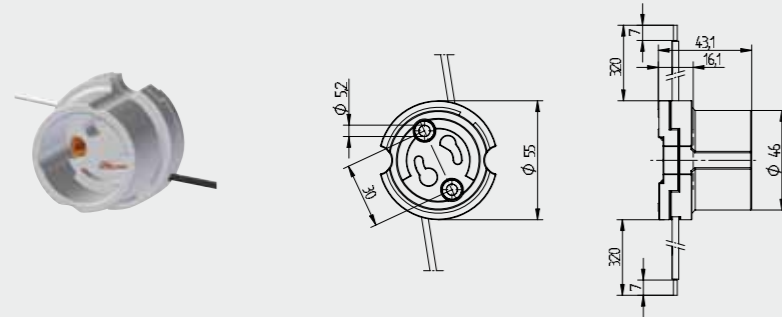
# Lampholders for discharge lamps

25.715

PGZ18



pkg. wt. part no.  
60 105 g **25.715.1001.00**



Screw fixing  
Housing: Ceramic

Wires: with 2 ignition wires, Cu, tin plated, 0.75 mm<sup>2</sup>, with ferrule, Insulation: silicone (max. 180° C), Free cable length: 320 mm  
Approval: additional cULus

T 250 3 A 250 V 5 kV/pulse CAD

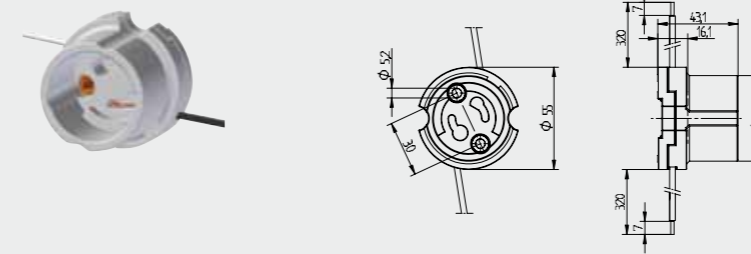
# Lampholders for discharge lamps

25.715

PGZ18



pkg. wt. part no.  
60 105 g **25.715.6001.00**



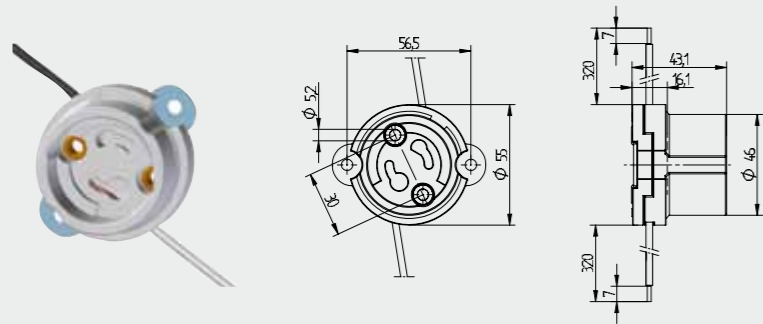
Screw fixing  
Housing: Ceramic

Wires: with 2 ignition wires, PTFE, 18 AWG, 600V, 250° C, Free cable length: 620 mm  
Approval: only cULus

- When using igniters, to prevent risk of discharge to earth, high temperature oversleeves should be used.

T 250 660 W 600 V 5 kV/pulse CAD

pkg. wt. part no.  
60 105 g **25.715.1201.00**

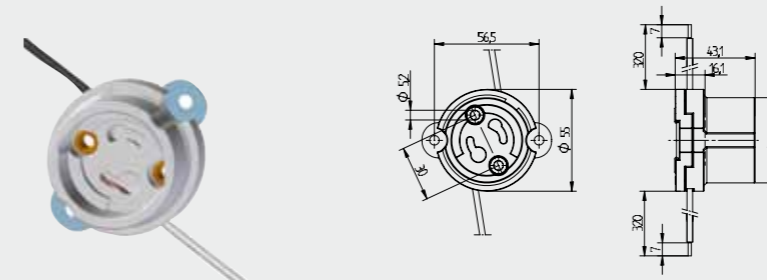


Screw fixing with plate  
Housing: Ceramic

Wires: with 2 ignition wires, Cu, tin plated, 0.75 mm<sup>2</sup>, with ferrule, Insulation: silicone (max. 180° C), Free cable length: 320 mm  
Approval: additional cULus

T 250 3 A 250 V 5 kV/pulse CAD

pkg. wt. part no.  
60 105 g **25.715.6201.00**



Screw fixing with plate  
Housing: Ceramic

Wires: with 2 ignition wires, PTFE, 18 AWG, 600V, 250° C, Free cable length: 620 mm  
Approval: only cULus

- When using igniters, to prevent risk of discharge to earth, high temperature oversleeves should be used.

T 250 660 W 600 V 5 kV/pulse CAD

## Symbols

T 250 Temperature rating

3 A 250 V Rating

660 W 600 V Rating

5 kV/pulse Starting voltage

CAD CAD data available

BJB GmbH & Co. KG · Werler Str. 1 · 59755 Arnsberg · Germany  
Telephone +49 2932 982-0 · Fax +49 2932 982-8201  
info@bjb.com · www.bjb.com



Your Connection to Light