

FAIR
HIGH
LIGHTS
2012



Lampholders and connectors for professional office lighting
Broaden your horizon and connect with BJB



Your Connection to Light



The lampholder for the designer luminaire.

Light and lighting in offices and administration buildings have undergone major changes in the last few years. It is not only work equipment which has changed, but also working methods. Rigid concepts are being replaced by flexible systems of use; teamwork and communication have dismantled the hierarchies which existed previously. The key word here is:

multifunctionality. The visible expression of this is the furnishing and equipment and, of course, the lighting. Take banks for example – everything has changed. Modern lighting solutions take this into account. They combine basic and accent lighting, light colour and character in a creative manner, producing atmospheres which inspire and

fuel the imagination. And they achieve this using components from BJB, from the classic fluorescent lampholder to the latest connection technology for interchangeable LED systems. This small brochure will provide you with some information. You can find out more at www.bjb.com.

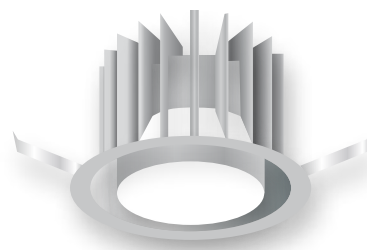
Elegantly designed GH76p connector for E-Core™ LED light engines from Toshiba

The connector and GH76p base of the E-Core light engine provide compact solutions with simple interchangeability and enable LED technology to be integrated into new and existing luminaire designs.



28.301

LED  LINE



LED & ADS

LED components from BJB are almost always ADS-compatible. Like all other components, they can be wired automatically with ADS systems.

Full range.

G13 fluorescent lampholders

In this product range, we supply every conceivable version: push-in, push-through, end-fixing, and twin lampholders, plus accessories. The phrase "There's no such thing as can't do" really applies in this case.



e.g. lampholder series
G13
26.290

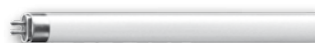


G5 fluorescent lampholders

The same can be said for this series as for G13: There is nothing that it can't offer. On the contrary: We have also developed the rotation aid for applications with particularly slim and delicate housings. Anyone who has tried to insert a T5 tube into such a light fixture with his fingers will definitely appreciate this BJB solution.



e.g. lampholder series
G5
26.641



Compact solutions.

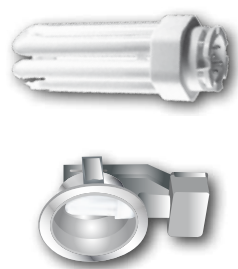
LED connectors

BJB supplies high-quality connectors for almost all chip-on-board modules from well-known manufacturers. Whether from Bridgelux, Cree, Citizen, Nichia or many other suppliers, our range offers numerous solutions for your applications. The major advantage: Only this technology enables light sources to be exchanged easily at a later date without the need for soldering. The two 47.315 examples for Citizen products show this design principle and clearly illustrate its advantages.



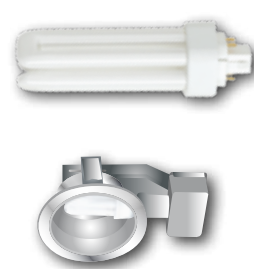
GR14q

In this lampholder, the twist & lock principle has been transferred to sockets for compact fluorescent lamps. With a rotational distance of only 40°, the GR14q enables the lamp to be inserted and replaced in a very positive and precise manner.



G24

With around 80 versions for compact fluorescent lamps, the 26.745 is one of the most versatile series in the BJB range. Since 2007 with rear-side swivel fixing. This series leaves nothing to be desired.

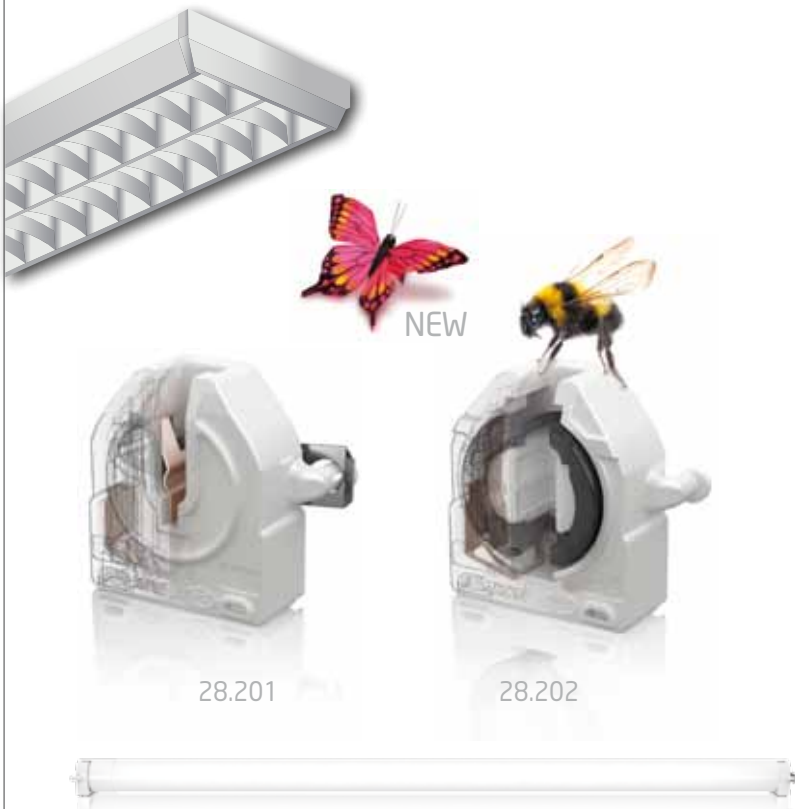




BJB. Good answers to important questions.

Lampholder system for non-retrofit LED tubes

Developed in cooperation with Toshiba Lighting Systems to meet demanding Japanese standards. The lampholder pair 28.201/202 for the GX16t-5 base is therefore suitable for innovative systems now being offered by numerous manufacturers such as Panasonic, Toshiba, Rohm, Civilight, Koyo, Mitsubishi-Osram, Sanken and Optotech. The BJB system enables 1:1 replacement to be carried out in existing luminaire designs.



LED  LINE

BJB terminal blocks

46.413 and 46.415 for the Wieland Gesis® Top luminaire connecting system. A solution which has proved its worth and is still unsurpassed in practice. With an ingenious basic design which will accommodate further versions and allow the development of systems with a long-term viable future.



Gesis terminal block, 3-pin
46.413



Gesis terminal block, 5-pin
46.415

LED & ADS

LED components from BJB are almost always ADS-compatible. Like all other components, they can be wired automatically with ADS systems.

These and further documents can be found
at www.bjb.com/downloads



BJB Catalogue



LED Catalogue



www.bjb-automation.com



www.bjb.com



BJB-Automation



BJB GmbH & Co. KG · Werler Str. 1 · 59755 Arnsberg · Germany
Telephone +49 2932 982-0 · Fax +49 2932 982-8201
info@bjb.com · www.bjb.com



Your Connection to Light