

GR14q is a joint development by BJB and **PHILIPS**

GR14q - lampholders for compact fluorescent lamps
Philips Master PL-R Eco 14 or 17 Watt



Your Connection to Light



More intelligence, less energy, better light. We have done a lot to achieve this.

GR14q is the result of cooperation between BJB and Philips. The aim was to develop a base-lampholder system for compact fluorescent lamps with increased energy efficiency (Master PL-R Eco) which would improve the design and make the lamp easier to handle.

The decisive factor: The system itself will achieve an increase in energy efficiency of up to 25 %, i.e. 82 lm/Watt in the case of the 14 Watt lamp and 84 lm/Watt for the 17 Watt lamp. An additional 5 % is gained from improved possibilities in reflector technology. Conclusion: This is the most efficient CFL system on the market and will achieve energy classification A.

A further advantage: G24-based systems are wattage coded for safety reasons. This is not necessary for GR14q applications as these operate with the constant current technology of "intelligent" electronic ballasts, which are able to recognise the type of lamp installed. In addition to the two lamp wattages in two colour temperatures, 830 and 840, there are two ballasts (HF Performer) for one and two lamps. Dimmable versions (HF Regulator) will also be available.



Advantage: Twist & lock fixing

It is considerably easier to equip light fittings using the GR14q system than with push-in bases. Especially in narrow reflectors, damage due to "uncontrolled" pulling off is avoided. The lamp is placed on the base and, after a twist, snaps in with an audible "click".

Precise positioning of the lamp

With the GR14q, the position of the lamp is precisely defined, thereby ensuring that the possibilities offered by the reflector technology are

exploited to the full.

No sagging of the lamp due to material fatigue

The optimum degree of efficiency of a reflector can only be ensured if the lamp is always in the same position. Even slight sagging reduces efficiency. This is prevented to a large extent by the new rotational method of fixing.

The lampholder is completely covered by the lamp

Thanks to its compact design, the lampholder is completely covered by the lamp. This opens up new possibilities in light fitting design. It also means that the fixing elements are protected from harmful UV radiation.

GR14q and Master PL-R Eco The ideal combination

Lampholder:

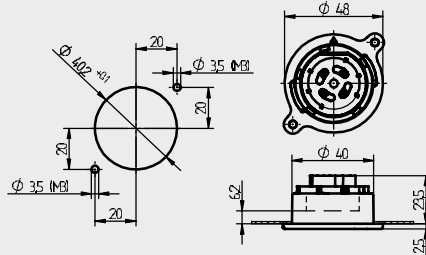
- New lampholder-base system in an elegant, round design
- Permanent, precise lamp position
- Twist & lock principle for a simple and safe method of lamp replacement
- Lamp completely covers the lampholder and protects it against material fatigue due to UV radiation

Lamp:

- Currently the most efficient CFL system
- 25 % lower energy consumption than conventional PL-C lamps (with electronic ballast)
- Attractive base design
- Dimmable

Lampholders for compact fluorescent lamps GR14q

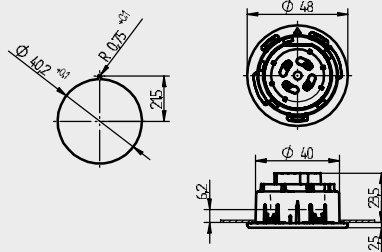
26.738



pkg. wt. part-no.
250 10 g **26.738.1001.50**

Screw fixing
Housing: PBT

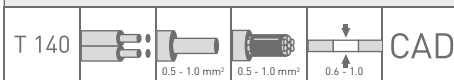
- For screws ISO 1207 - M3
- For correct technical operation of the lamp, when mounted horizontally, the lampholder must be embodied, so that the arrow on the lampholder rim is pointing upwards following installation of the luminaire



pkg. wt. part-no.
250 10 g **26.738.1002.50**

Snap in fixing
Housing: PBT

- For correct technical operation of the lamp, when mounted horizontally, the lampholder must be embodied, so that the arrow on the lampholder rim is pointing upwards following installation of the luminaire



Lampholders for compact fluorescent lamps GR14q

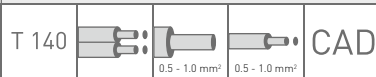
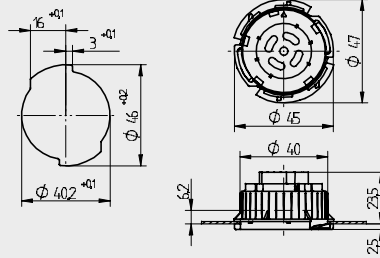
26.738



pkg. wt. part-no.
250 10 g **26.738.1003.50**

Bayonet fixing

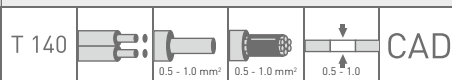
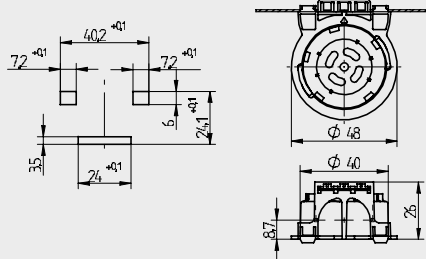
Housing: PBT



pkg. wt. part-no.
250 10 g **26.738.1004.50**

Snap in foot

Housing: PBT



Signets

T 140 Temperature marking

Twin push-wire terminal

For single-core cable within cross sectional range stated

For tinned wire ends within the cross sectional range stated

Illuminated wall thickness shown in mm

CAD CAD data available



Philips 14 Watt

Philips 17 Watt

OSRAM 14 Watt

OSRAM 17 Watt

GR14q is a joint development by BJB and **PHILIPS**

BJB GmbH & Co. KG · Werler Straße 1 · 59755 Arnsberg
Telephone +49 29 32.9 82-0 · Fax +49 29 32.9 82-82 01
info@bjb.com · www.bjb.com


Your Connection to Light